

‘Be the best you can be in God’s beautiful world’

Christ Church C.E. First School, valuing its name, its roots and its partnership with the local Church, seeks to be a learning community which aims for high standards, and in which Christian values are exemplified and experienced on a daily basis.

Our full mission statement can be found on the school website:

www.christchurch-stone.staffs.sch.uk

Here you will find information on our school approach to meeting the needs of pupils with Special Educational Needs and Disabilities to ensure that they make the very best possible progress in our school, preparing them for their next stage of life.

What is the local offer and where can I find information on it?

You can find information at:

[https://
www.staffordshireconnects.
info/kb5/staffordshire/
directory/home.page](https://www.staffordshireconnects.info/kb5/staffordshire/directory/home.page)

and -

Information on the Staffordshire Graduated Response to Special Educational Needs can be located at:

[https://
www.staffordshireconnects.
info/kb5/staffordshire/
directory/localoffer.page?
localofferchannel=0](https://www.staffordshireconnects.info/kb5/staffordshire/directory/localoffer.page?localofferchannel=0)



**STAFFORDSHIRE
CONNECTS**

Connecting you with help and support in your community.

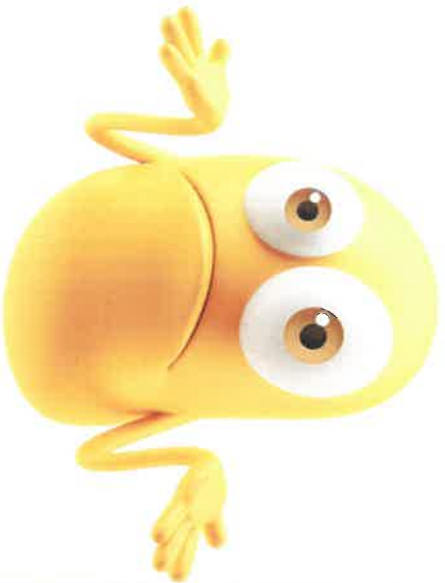
Who are the best
people to talk to if I
think that my child
has Special
Educational Needs?



**You can speak
to:**

- **Your child's
class teacher**
- **Miss Tudor
(the Special
Educational
Needs
Coordinator)**
- **Mrs Graham**

How will the school
know if my child has
Special
Educational Needs
or Disabilities?



We know when pupils need help if:


Concerns are raised by parents/carers, teachers, or the pupil's previous school

Tracking of attainment outcomes through Teacher Assessment processes indicate a lack of attainment/progress

There is a change in the child's behaviour

A pupil asks for help

Pupil observation indicates that they have additional needs



How does the school
teach children with
Special Educational
Needs?

We assess -

- Looking at pupil progress/attainment every term

We plan -

- Working with Parents/ Carers and children to decide what their targets are and how we will achieve them

We do -

- Children work with different resources, staff and strategies to boost/ enable their learning

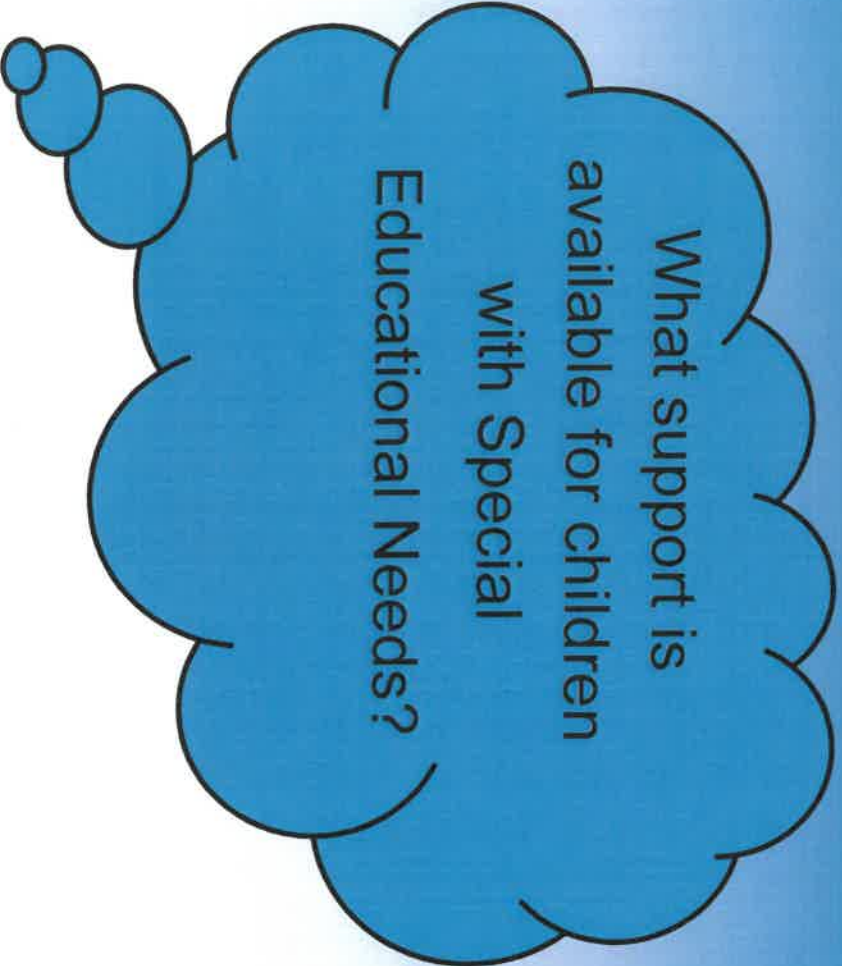
We review -

- How have we done?
Have we achieved our targets? What are our new targets?

How do we
know we're
working well?

- We analyse our data to look at how much our children learn
- We monitor the practice in school through observations, looking at intervention logs, reviewing learning plans and reporting to our Governors
- We train our staff so that their knowledge means that our children are well supported
- We consider whether our children are attending our school and if they behave well
- We support our staff to make sure that they fulfil their potential too!

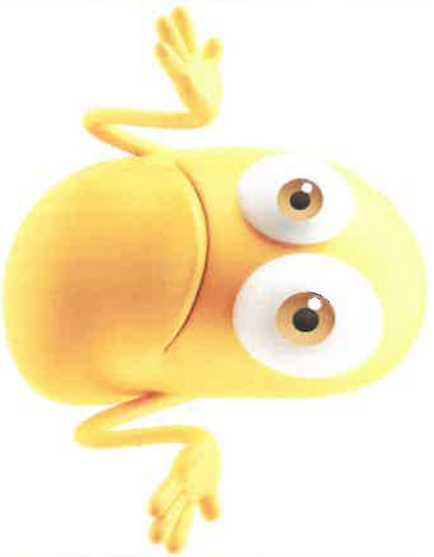




What support is available for children with Special Educational Needs?

- Support for children with SEN may be:
- Support in targeted groups
 - Support on an individual basis
 - Support as part of their whole class

Some children may need different resources/teaching styles to enable them to learn more effectively.



How will I be involved? Will you involve my child too?

Both you and your child will be involved right from the start. You can get involved through:

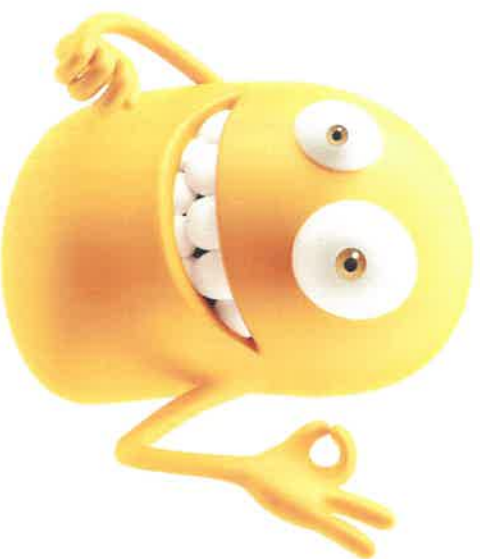
- Discussions with the class teacher, SENCo or the Head Teacher
- Parent's evening meetings
- Parent/Carer events/workshops
- Working with your child at home
- Being involved in the Special Educational Needs Assess, Plan, Do, Review cycle
- Offering your views via Parent View or through questionnaires
- Joining the school PTFA

Your child will:

- Complete a one page profile to tell us what they are good at and about the support they think they may need
- Attend meetings to discuss/set their targets/provision (where appropriate)
- Complete pupil voice questionnaires
- Talk to the staff that support them every-day




Does the school
work with other
people to get
further help?



The school works with a variety of professionals to ensure that your child is offered the opportunity to reach their full potential.

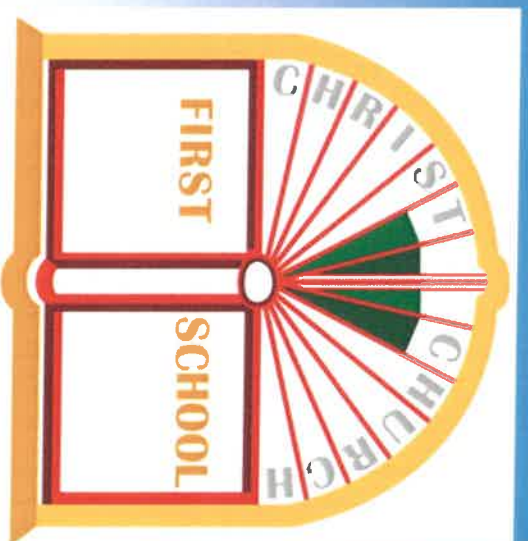
Some of these agencies may include:

- Educational Psychology Services
- Entrust SENIS Learning Support
- Entrust SENIS Behaviour Support
- The School Nursing Service
- Speech and Language Therapy Services
- Social Care
- Autism Outreach Services
- Hearing/Visual Impairment Teams



How are the adults in school helped to work with children with SEND and what training do they have?

- The SENCo's job is to support the class teacher in planning for children with SEN.
- Individual teachers and support staff attend training courses either in school or through external agencies



We are proud that Christ Church First School is an inclusive school and all children are an important part of our school/ Church family.

Children with Special Educational Needs and Disabilities are encouraged to achieve their potential in both their education and their personal development as a child of God. We give them the opportunity to:

'Be the best you can be in God's beautiful world'