

A young woman with her hair in a bun, wearing a grey school blazer, a white shirt, and a striped tie, is sitting in a library. She is holding an open book with colorful illustrations of various organisms. The background shows bookshelves filled with books.

CHS South



An 11-16 secondary school opened in conjunction with Chorlton High School

PROSPECTUS

CREATIVE

HAPPY

SUCCESSFUL





WELCOME TO **CHS SOUTH**, AN EIGHT-FORM ENTRY, MIXED, COMPREHENSIVE SCHOOL. WE OPENED IN CONJUNCTION WITH CHORLTON HIGH SCHOOL IN SEPTEMBER 2018 AND WILL BUILD TO CAPACITY OVER THE NEXT FIVE YEARS.

“ OUTSTANDING LEADERSHIP FROM THE HEADTEACHER AND THE SENIOR TEAM HAS ENABLED A TRANSFORMATION IN TEACHING AND LEARNING, IN CURRICULUM OPPORTUNITIES AND IN THE QUALITY OF CARE, GUIDANCE AND SUPPORT AVAILABLE TO STUDENTS. ”

OFSTED - CHORLTON HIGH 2016

BUILDING EDUCATIONAL CAPACITY FOR OUR COMMUNITY

There is strong parental demand for the existing Chorlton High School within Manchester. Chorlton High School has been consistently oversubscribed over the past 5 years, with parents regularly having to appeal for places in Year 7 and for mid-year admissions.

Over recent years the total number of preferences for Chorlton High School has increased significantly with consistently between 800 - 1000 applications for the 300 Year 7 places. We have also seen the distance measure for successful applicants reduce significantly year on year.

As a strong provider with a proven track record of effective school improvement we were approached to extend the provision on offer at Chorlton High School. In 2016 we applied to the Department for Education to open a Free School and we were approved to open CHS South. We successfully opened our to the local community in September 2018 and moved to our brand new building in September 2021.



ANDY PARK
EXECUTIVE HEADTEACHER

THE PROSPERE LEARNING TRUST

CHS South is part of the Prospere Learning Trust, made up of: Chorlton High School, CHS South, Grange School, Manchester Enterprise Academy, MEA Central, Piper Hill High School, Pioneer House High School and Prospect House Primary Specialist Support School. The Prospere Learning Trust was formed to create a Multi-Academy Trust of Manchester schools. Our aim is to provide excellent opportunities for all students based on our commitment to academic rigour whilst providing comprehensive education to all the children in our local communities in a safe and nurturing environment.



01

OUR RATIONALE

OUR VALUES

I am immensely proud to be entrusted with the role of Headteacher at CHS South. To be able to extend the fantastic provision on offer at Charlton High School to more young people in our community is one I embrace whole-heartedly. For 14 years, I was honoured to contribute to the development of Charlton High School as a member of the Senior Leadership Team and I passionately believe in our shared ethos of providing an education that allows young people to become creative, happy and successful. By opening CHS South we have ensured more young people in our community have access to an education that not only allows them to achieve academic excellence but also acquire the creative skills necessary to successfully apply their abilities and navigate their way in an ever changing landscape.

The delivery model at CHS South is based upon the structures and processes that have successfully delivered outstanding outcomes at Charlton High School. We use our knowledge and experience to inform the learning journey at CHS South, ensuring that all of the young people in our care are provided with opportunities to excel and flourish. We also ensure the young people at CHS South have access to a broad and forward thinking enrichment curriculum. We are well positioned to offer a diverse and engaging sports curriculum through our fantastic relationships with the vast array of sports providers in our community. Furthermore our expertise and understanding of the creative arts, an industry growing faster in our local community than anywhere in the UK outside London, ensures our young people are provided with the opportunities to develop and hone their skills in order to become the next generation of creative trailblazers.



DAVID PROPHET
HEADTEACHER, CHS SOUTH

AT CHS SOUTH WE SUPPORT OUR COMMUNITY TO EMBODY OUR VALUES OF BEING:

CREATIVE

An education where imagination, curiosity, and resilience enable us to ignite our learning.

HAPPY

A shared belief that optimism, empathy and responsibility are the foundations for a respectful, safe and inclusive community.

SUCCESSFUL

Individuals who are ready, practise being reflective, and who are motivated to become champions.

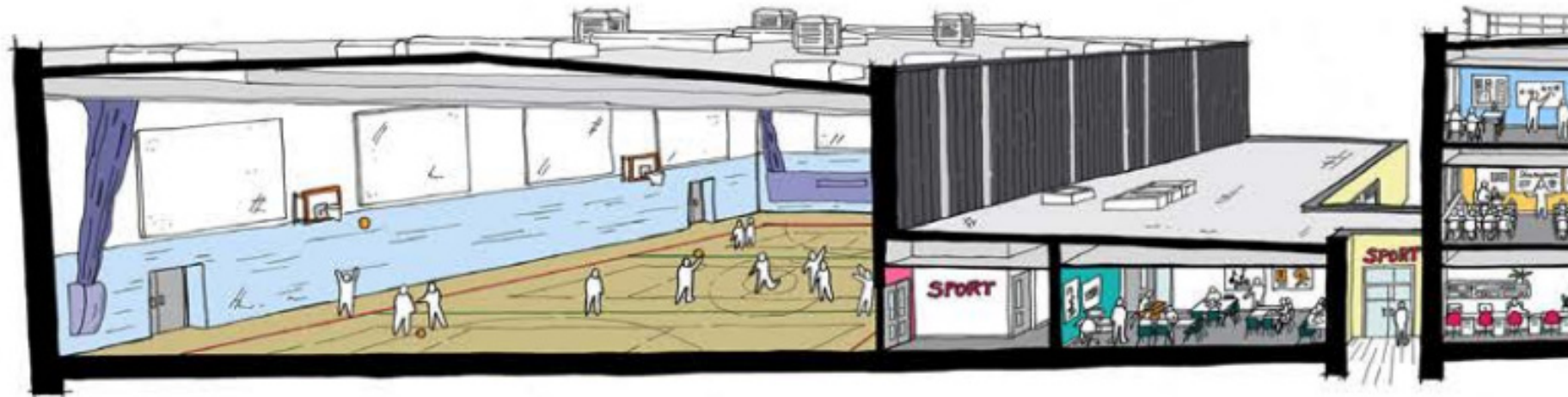
OUR LOCATION

WELCOME TO OUR SCHOOL

In September 2021 we moved to our brand new, purpose-built secondary school at Hough End. The building is equipped with state of the art specialist equipment and facilities to support our students on their journey to become creative, happy and successful. Alongside a full range of classrooms equipped with the latest teaching technology including specialist Science, Computing, and Technology rooms, we also boast professional standard Arts facilities including our Theatre, Drama studios, Music classrooms and practice rooms, sprung Dance studio and Art and Photography suites.

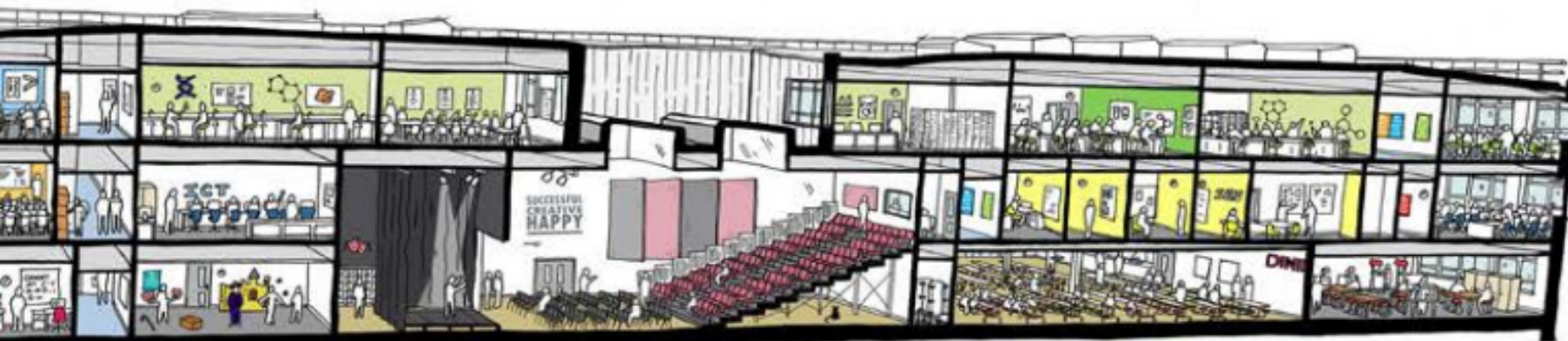


03



CHS SOUTH LOCATION continued

The school building is located at the heart of the local sporting community, neighbouring Broughton Rugby Club, Hough End playing fields and Hough End Leisure Centre. Our school contributes a professional standard Sports Hall, Astroturf pitch, basketball and netball courts and table tennis facilities to extend the excellent provision on offer to the local community



AN EDUCATION WHERE IMAGINATION, CURIOSITY, AND RESILIENCE ENABLE US TO IGNITE OUR LEARNING.

We believe that these fundamental skills and qualities underpin all career paths and future routes as they provide essential and relevant foundations for future success. Our Arts College origins allow us to provide high quality Arts education for our students and the local community. These experiences and opportunities are enhanced and enriched by a range of master-classes, workshops and tutorials led by professional and nationally renowned groups.

The Arts is a thriving hotbed of activity with students being able to access and experience a broad and eclectic range of art forms at the highest level. Students regularly perform or exhibit their work in school, as well as in the many professional arts venues across the city to showcase and celebrate their talent.

ENRICHING EXPERIENCES

At CHS South, our aim is to nurture and develop each student. We therefore allow them to take part in a range of enrichment experiences. These not only enable them to develop their learning and foster creativity, but also widen their experiences and open up new horizons and opportunities to discover talents, passions and interests that they may never have considered before.

EXTRA-CURRICULAR LEARNING

Extra-curricular activities are an important and exciting feature of school life and contribute enormously to our students' social and academic development. There is an extensive menu of free extra-curricular activities on offer with opportunities to take part in workshops, field trips and research. We also offer students the chance to experience different cultures through our range of visits to educational venues linked to curricular areas. We intend our students to readily enjoy these experiences and relish the unique opportunities that they are given to extend and expand their learning.

CHS South is also building an impressive sports provision. Students benefit from working with professional coaches and athletes at a range of professional venues. We also field teams in a range of sports and students participate regularly in competitions and tournaments, competing at city wide and regional levels.





“ PRACTICAL LEARNING
HAS MADE MY CHILD
MORE CURIOUS. ”

PARENTAL FEEDBACK

A SHARED BELIEF THAT OPTIMISM, EMPATHY AND RESPONSIBILITY ARE THE FOUNDATIONS FOR A RESPECTFUL, SAFE AND INCLUSIVE COMMUNITY.

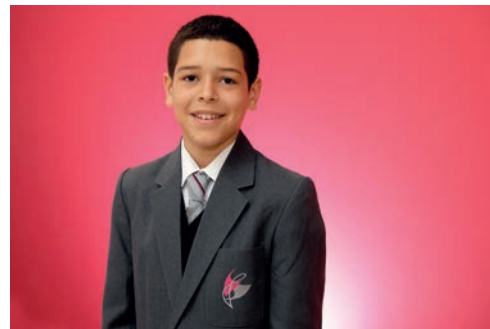
Good behaviour and achievement is recognised through our comprehensive rewards system and students are encouraged to be champions for each other and act as ready, respectful & safe community members.

A culture of respect is also actively promoted throughout the school. Our anti-bullying policy establishes the right for every child to feel safe and self-assured; making it clear that any behaviour deliberately causing upset will not be tolerated. It promotes mutual respect between students, which encourages confidence in talking openly.

Our students play a major part in developing and shaping our school. The representatives of our Champions council directly influence school improvements and meet regularly to discuss issues and priorities and to make a contribution to the school, Trust and wider community.

Student focus groups will: actively develop school policies; be involved in the appointments of key members of staff; and will be consulted at subject level about all aspects of their learning.

We are also committed to preparing young people to be healthy, responsible citizens of the future. We actively teach our nine Qualities of Success to help our young people grow to be mature, well-rounded and resilient citizens. Our school also has a team of student wellbeing ambassadors, as well as holding the gold standard in the School Games sports award and others. Our PSHE curriculum is also central to the development of these personal skills and raises awareness of many global, local and personal issues; equipping each student with some of the tools that they will need in later life.



THE PASTORAL EXPERIENCE

Each student at CHS South is carefully assigned to a mixed ability Tutor Group. The Form Tutor sees students every morning and is a consistent point of contact, taking responsibility for academic welfare and maintaining communication with parents. Form Tutors develop a close relationship with their Tutees and have the clearest overview of progress, guidance and academic achievement. Each Year Group is led by a Pastoral Team who have overall responsibility for the well-being of students in their Year Group. They are also responsible for monitoring the progress of students and work with Tutors to promote good attendance, positive behaviour and a vibrant community spirit.



07

HAPPY



“ STUDENTS FEEL VERY MUCH PART OF THE COMMUNITY AND OFTEN SHOW ADMIRABLE CARE AND CONSIDERATION FOR EACH OTHER. RELATIONSHIPS BETWEEN STAFF AND STUDENTS AND ACROSS RELIGIOUS AND ETHNIC DIFFERENCES ARE HARMONIOUS AND SUPPORTIVE. THIS IS A GENUINELY COHESIVE COMMUNITY.

OFSTED - CHORLTON HIGH 2016

”

INDIVIDUALS WHO ARE READY, PRACTISE BEING REFLECTIVE, AND WHO ARE MOTIVATES TO BECOME CHAMPIONS.

CHS South staff work in partnership with students, parents and carers, and other stakeholders to personalise learning so that all individuals are equipped with the skills, qualifications and confidence that they need to succeed in their choice of further education or employment. Our goal is to create lifelong learners who are fulfilled and successful.

THE CURRICULUM

The CHS South curriculum emulates the curriculum of Chorlton High School to enable the school to follow a proven path to success. All students follow an informed, broad and balanced curriculum, which will stretch and challenge but also provide the scaffolding to ensure that students achieve and exceed their potential. In Years 7 and 8 this curriculum is underpinned by high quality provision in: English, Mathematics and Science. All students also study: Modern Foreign Languages, History, Geography, RE, Computing, a range of Technology subjects, Art, Drama, Dance, Music, PSHE and PE, giving them a varied and stimulating daily diet of lessons and experiences.

As students move into Year 9, they begin to shape their own learning pathways. The focus shifts to developing a deeper understanding of the subjects that they have chosen to specialise in. Students will continue their study of the compulsory core subjects of English, Maths and Science. To ensure all students are provided with a curriculum that offers the breadth and depth of the National Curriculum all students also follow a selection of compulsory foundation subjects for the duration of Year 9. Alongside compulsory subjects' students will choose a number of subject areas to study and the additional concentrated time in these lessons will enable them to 'master' the subject and foster a deeper conceptual understanding. This will build powerful knowledge which ensures that all students are sufficiently challenged according to their starting points, and grasp the key concepts needed for high-level success in Years 10 & 11.

As with the Chorlton High School curriculum, our curriculum is rigorous and challenging; creative and inspiring; diverse and wide ranging; perfect for the vibrant and eclectic range of students we teach. At CHS South, we pride ourselves on meeting the needs of our students and motivating them to achieve through our rich and engaging curriculum.

ASSESSMENT

Our students are placed in teaching groups best suited to allow staff to personalise learning and meet individual needs based on the information we receive from Primary School and our initial baseline assessments; this enables our teachers to innovate, motivate, challenge and inspire whilst still providing appropriate levels of support. Teachers assess students' work thoroughly, ensuring that they make striking progress. Our curriculum structure allows for flexibility and we facilitate group changes where necessary so that students are appropriately challenged and supported as they progress through their learning.

THE IMPORTANCE OF LEARNING

We are passionate about learning at CHS South and are driven by our quest to ensure that students take responsibility for their own futures by becoming creative, happy and successful, lifelong learners.

Motivating students to learn is paramount, and we strive ardently to ensure that students grasp all opportunities available to develop, extend and achieve. We encourage them

to be motivated, curious and to know and understand how well they are doing and how they can improve. We believe that nurturing reflective learners and active leaders ensures that students can develop, progress, and have the resilience to compete at the highest levels in all areas of life.

ACCESS AND ACHIEVEMENT

We monitor, support and motivate all students, ensuring that their needs are met. They are challenged and their progress is accelerated with enrichment activities developed within their tailor-made curriculum to push them to achieve. In addition, our 'Access and Achievement' team ensure that students' individual learning needs are catered for. A specialist, knowledgeable, passionate and experienced team work alongside students, and their families, staff and other stakeholders to ensure that all students can access all they need to achieve their potential. Specific interventions and bespoke programmes are carefully orchestrated and closely monitored to meet the individual needs of each student, ensuring that there are no barriers to success.

09

SUCCESSFUL

BUILDING SUCCESSFUL LIVES

Through The Prospere Learning Trust, CHS South has strong partnerships with many excellent post-16 providers in Manchester; students across our Trust are much sought after in the competitive post-16 market. The Trust also has an excellent reputation for educating gifted and talented students.

Impressively, the vast majority of Prospere students progress on to further study after leaving schools in our Trust. We are incredibly proud of all of our students and their achievements; a large number of whom progress onto further study at University, including Oxbridge and The Russell Group, reading a broad range of subjects such as Medicine, Law, Sciences and the Arts.

At CHS South we are committed to ensuring that all of our students reach their very best, compete successfully at a national level and exceed expectations.

“ I AM PROUD TO TELL FRIENDS AND OTHER PARENTS THAT MY CHILD ATTENDS CHS SOUTH. ”

PARENTAL FEEDBACK

THE JOURNEY FROM PRIMARY SCHOOL TO SECONDARY SCHOOL IS AN EXCITING TIME FOR STUDENTS. AT CHS SOUTH WE ENDEAVOUR TO ENSURE THAT THIS TRANSITION IS AS SMOOTH AS POSSIBLE.

TRANSITION

Through our specialist Transition Team we provide a wide range of supportive activities for our partner primary schools to help Year 5 and 6 students feel confident about their move to secondary school. During Key Stage 2, our specialist team work alongside teachers in primary schools to provide many exciting projects. This means that most of the children at our partner primary schools will have experienced our school prior to beginning Year 7. In the summer term of Year 6, our Transition Team visit students in their primary schools, liaising with their teachers and introducing a group of Year 7 'buddies' who will support them. In June, all incoming students are invited to attend an 'Induction Day' where they can enjoy lessons, are introduced to some of their teachers and make new friends.

Parents are also invited for an 'Induction Evening', to meet staff, to hear about how parents can be involved with the school and to discuss any concerns about starting High School.

PARTNERSHIP WITH FAMILIES

We maintain high levels of contact with families. Members of staff often write to parents or carers, contact them by telephone or invite them in to discuss issues of importance about their child's welfare and progress. Likewise, we encourage parents to contact us if they have any issues they would like to discuss. There are regular Parents' Evenings throughout the school year where parents can speak to their child's subject teachers and there is a Parents' Forum which meets regularly to discuss various topics related to the development of the school. We see our parents as a vital part of our school community and encourage everyone to play a role in shaping the direction the direction we take.

11



“ IT'S PLAIN TO SEE HOW MUCH THEY CARE ABOUT MY CHILD'S EDUCATIONAL AND HOLISTIC WELLBEING. ”

PARENTAL FEEDBACK

ADMISSION NUMBER(S)

The school has an admission number of 240 for entry in Year 7. The school will accordingly admit this number of pupils if there are sufficient applications. When the school is oversubscribed, priority will be given to those children who meet the criteria in our admissions arrangements.

ADMISSIONS ARRANGEMENTS

The local authority will process applications as part of their co-ordinated school offer system. If you would like your child to come to CHS South you should follow the Manchester application procedure for moving on to a High School. Details will be issued to you by your child's Primary School or are available from:

Manchester City Council
Directorate for Children and Commissioning Services
Integrated Admissions Team
PO Box 532
Town Hall Extension
Manchester
M60 2LA
Tel: 0161 245 7166
school.admissions@manchester.gov.uk
www.manchester.gov.uk/admissions

If you want your child to secure a place at CHS South we strongly recommend that you choose CHS South as your first choice preference and submit your application to the local authority by their published deadline. Applications are welcome from the families of students who want to choose a truly comprehensive, creative, happy and successful local school.

OFFER PROCESS

Offers are made at the start of March each year by the Local Authority. If by that time you have not received your school of choice and you wish to change your preference in favour of CHS South, please either contact our admissions team at admin@chssouth.org.uk or contact the local authority via school.admissions@manchester.gov.uk.

If there is availability you will be offered a place and if we are full you will be added to our waiting list until a place becomes available. The Local Authority only keep children on a waiting list for one term; you will need to reapply for the following term.

12

CREATIVE HAPPY SUCCESSFUL

HOW TO CONTACT US :

451 Mauldeth Road West, Chorlton,
Manchester. M21 7SX

0161 241 9930

admin@chssouth.org.uk

www.chssouth.org.uk

[@southchsmcr](https://twitter.com/southchsmcr)

[@southchsmcr](https://www.instagram.com/southchsmcr)



CHS South

An 11-16 secondary school opened in conjunction with Chorlton High School