

# CHURCHMEAD SCHOOL

February 2025 Newsletter



## This issue:

### Message from the Headteacher

Dear Parent/Carer,

As we approach Half Term we have a great deal to celebrate. Students across all year groups this week have been receiving awards for 100% attendance and for their commitment to learning. It has been very encouraging to see so many achieve different awards.

Our Guardian Angel team has just been appointed - these are student mentors in Year 10 who support and help students across the school. It was great to see so many of our students keen to take up this new responsibility. Our Ofsted outcome from last term has really lifted the school and we continue to be encouraged with feedback from various visitors to our site. I was delighted that we were able to open the next phase of our building project just after Christmas. The new classrooms have been a welcome addition, creating fantastic learning spaces for our students. The final stage of our project starts after Easter, creating a performing arts suite, including music practice rooms and two classroom spaces that can also be transformed into a performance space.

Our Year 11 and Year 13 students have completed their first week of Pre-Public Exams. These will continue after Half Term and I would like to encourage our students in their revision.

After Half Term we will be entering the time of Lent within the Christian calendar - an opportunity to fast as well as reflect on our lives. We will, as in previous years, be following the 40 Acts of Lent series to encourage students to go the extra mile for other members in our community.

Warmest regards

Chris Tomes  
Headteacher

**Message from the Headteacher**  
Page 01

**Key Dates**  
Page 02

**Year 10 Art Trip**  
**A-Level Philosophy Trip**  
Page 03

**Ofsted Results**  
Page 04

**Ofsted Results**  
Page 05

**Careers Fair**  
Page 06

**Year 11 Revision Fair**  
**Healthy Relationships Workshop**  
**NSPCC Childrens Mental Health Awareness**  
Page 07

**Outside Achievements**  
**Teaching & Learning Champion**  
Page 08

**Important Reminders**  
**Uniform Donations**  
**Links to Advice & Support**  
**Safeguarding Notices**  
Page 09

**PTA News**  
**Free School Meals Applications**  
Page 10

**Keeping in Touch**  
Page 11



Believe  
to  
Achieve

## **Key Dates**

### **Start of Term**

Monday 24th February 2025

### **Year 11 PPE's**

Monday 24th - Friday 28th February 2025

### **Year 8 Student Progress Meetings**

Thursday 27th February 2025

### **World Book Day**

Thursday 6th March 2025

### **Churchmead Book Day**

Friday 7th March 2025

### **Churchmead Showcase**

Thursday 13th March 2025

### **Inset Day**

Friday 14th March 2025

### **Year 10 PPE's**

Monday 17th March - Friday 28th March 2025

### **Year 8 Options Evening**

Thursday 20th March 2025

### **Red Nose Day**

Friday 21st March 2025

### **Year 11 & Sixth Form Year Group Photo**

Tuesday 25th March 2025

### **Prize Giving Evening**

Thursday 27th March 2025

### **Year 8 Options Form Return**

Wednesday 2nd April 2025

### **Easter Church Service**

Wednesday 2nd April 2025

### **Last Day of Term**

Friday 4th April 2025

### **Start of Term**

Tuesday 22nd April 2025



## Year 10 Art & Photography trip

Our Year 10 Art & Photography students had an amazing adventure visiting Oxford to view the famous Ashmolean, Pitt Rivers and Natural History Museums.

The museums showcase one of the biggest collections of precious and prehistoric artifacts from around the world. The gallery experience at the Ashmolean Museum also documented the History of Art throughout time with artworks by some of the famous art masters such as Pissarro, Sisley, Picasso and Van Gogh.



The experience proved to be a great success as the students were able to take a whole range of photographs and make sketches investigating the cultural wealth that was on display both inside the museums and then during the city walk.

The city walk took them on a route around the traditional Covered Market, famous Rad Cam and University buildings. This was a particular highlight for most students, being able to soak up the atmosphere of the busy city life and sample food from the market stalls.

## A Level Philosophy Trip to London

Year 13 students had a brilliant day of SMSC enrichment. Students went to Westminster Abbey, Parliament Square, Westminster Cathedral, The National Gallery and the National Portrait Gallery. This was a trip to enrich the students A Level course - specifically the section of the course about the Development of Christian Thought.



Life  
in all  
its  
Fullness



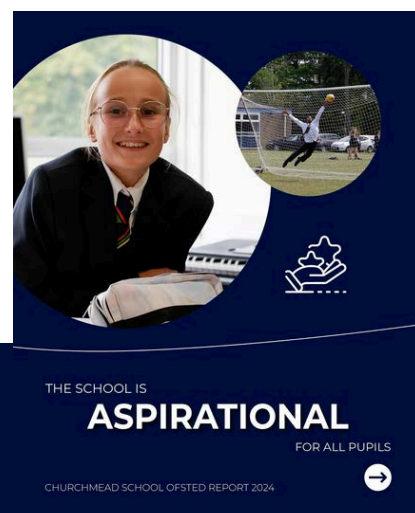
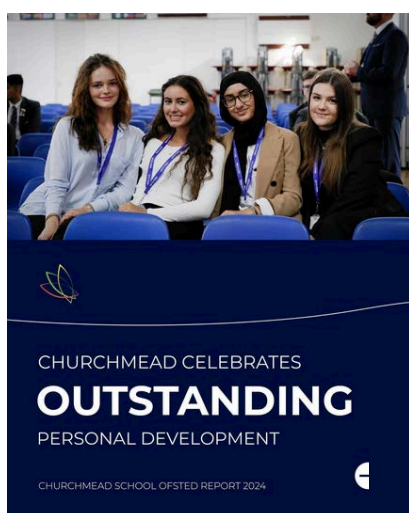
Believe  
to  
Achieve

## Outstanding Ofsted results

**“The personal development of students at Churchmead school is “Outstanding.”  
This is the view of OFSTED following a full inspection in November 2024.**

In their report Ofsted celebrates the strong sense of community, the ambitious programmes of learning across all year groups and the strong provision in the Sixth Form. I would like to thank parents for their commitment to attendance as this was also celebrated in the report.

As one pupil aptly put it, ‘it’s a small school with a big heart’. Staff and pupils live out the school’s values of courage, compassion, and commitment. Pupils show consistently high levels of respect, including for those from different backgrounds. The school is aspirational for all pupils. It provides individualised care for pupils who need additional support. As a result, pupils achieve well.



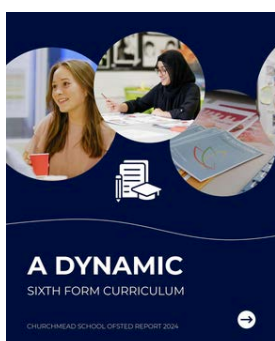
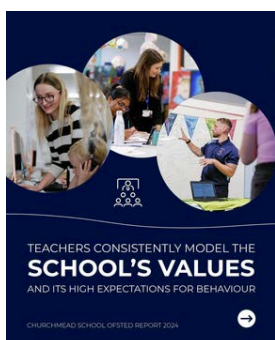
We are sure you will be aware that Ofsted inspections have become more rigorous, with a greater focus on curriculum and the personal development of students.

We are extremely grateful to so many parents and carers who completed the online questionnaire and the overwhelming support for the school.

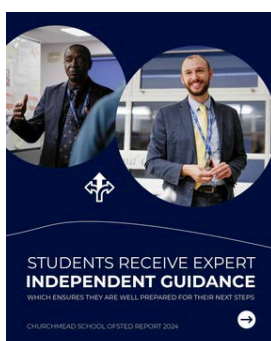
We will continue, through our commitment and dedication, to build on the very strong practice highlighted in the report.

## Outstanding Ofsted results continued

During the inspection, the team observed many different lessons, spoke to a variety of different student groups, examined the achievements of the school and spoke to members of staff. Student, staff and parent surveys were also used to gain a comprehensive overview of the school. In addition, inspectors made the following observations:



- Pupils enjoy coming to school and have excellent attendance
- The school's expectations and clear routines ensure a calm and orderly environment
- The school's personal development programme is exceptional. It is well thought out and responsive to pupils' needs. The school ensures that pupils know how to keep themselves safe and healthy, and includes teaching about any potential risks from being online
- Leaders and governors are committed to the school's continuous improvement. They make decisions in the best interests of pupils and are reflective in their practice. Staff appreciate leaders' support. As a result, staff feel valued as professionals
- The school has an ambitious curriculum that ensures pupils experience a broad and balanced education
- Staff have carefully considered what pupils need to learn, and the best order to teach content
- Pupils achieve well and achieve good outcomes in public examinations
- In the Sixth Form students are highly engaged in their learning
- Staff identify the needs of pupils and make suitable adaptations
- Staff skilfully check what pupils understand and can remember. Staff ensure learning in lessons builds on what pupils already know
- Pupils behave well and most lessons are calm and purposeful
- Reading is prioritised. The school consistently focuses on building pupils' vocabulary, which helps them learn well



Life

in all  
its

Fullness



Believe  
to

Achieve

## Careers Fair



This term we hosted a huge range of exhibitors as part of our Churchmead 2025 Careers Fair! Every student had the opportunity to attend and see what options could be available to them after their GCSE's.

Special thanks go to our Head of Careers, Miss Spencer, our friends at Learning to Work and the fantastic selection of exhibitors which included:

**BRITISH  
AIRWAYS**

Heathrow  
British Airways  
British Army  
BCA  
NHS

Hertfordshire University  
Birkbeck University  
Buckingham University  
IHG

NRG Motor Sport  
Activate Learning  
De Vere Hotels group  
City Gate Automotive



ASK - Apprenticeship Support & Knowledge Programme



A huge thanks to our Sixth Form students who helped showcase Churchmead's Sixth Form offering excellently.



## Year 11 Revision Fair

Students, parents and carers were able to talk to subject teachers, receive valuable revision advice and take home all of the materials they need to help them excel in their GCSEs at this terms Year 11 Revision Fair. We know they'll all succeed and we wish them luck going into exam season.



## Healthy Relationships Workshop

We'd like to thank the Dash Charity, who came to school this month to present to our Year 9 and Year 12 students about Healthy Relationships, as part of our PSHE programme. The Dash Charity support people experiencing domestic abuse in our local community and we are grateful to them for spending the time with us.



## NSPCC Childrens Mental Health Awareness



On Friday 7th February 2025 students and staff wore green to support the NSPCC Childrens Mental Health Awareness week. There was a bake sale and each year group did a sponsored walk/run to see how many laps of the school grounds they could do. In addition to the donations for not wearing school uniform, the total raised was **£874.40!**



Life

in all  
its

Fullness



Believe  
to  
Achieve

## Outside Achievements

A round of applause to the Wraysbury Players on another entertaining pantomime in January. Oh no it wasn't, oh yes it was! Churchmead students Amy French, Rose Wordham, Ellie Wordham, Toby French and Edward Humphries took on various roles in the Wizard of Oz, contributing to it being a huge success. Congratulations to you all for being such a fabulous part of your community.



## Teaching and Learning Champion



Congratulations to Mrs Brown on being the first recipient of the Churchmead Teaching and Learning Champion mug. Her lessons are dynamic, well planned and always very engaging for her students. Her questioning, and use of the Churchmead Teaching and Learning strategies, are embedded throughout her lessons, ensuring that students are equipped to demonstrate their knowledge and skills in a variety of ways.

Well done Mrs Brown!



## Important Reminders



- If you need to collect your child during the school day for an appointment, please remember to email the school at [office@churchmead.org](mailto:office@churchmead.org) with evidence of the appointment, and what time you will be collecting beforehand.



- A reminder that if a student feels unwell while at school, they must come to the school medical office to be assessed, not call or text home directly. We will then decide the most appropriate next steps, including calling home if necessary. A gentle reminder that we are a no mobile phone school.

## Uniform Donations

The school office are looking for any donations of pre loved school uniform still in good condition. We currently have a shortage of skirts of all sizes. If you have anything you'd like to donate, please drop it to main reception.

### [Links to advice and help](#)

#### Online Safety

[Safer Internet Day Top Tips and Advice Pages](#) | [Childnet 11-18s](#) | [CEOP Education](#)

#### Mental Health and Wellbeing

Young Minds – [www.youngminds.org.uk](http://www.youngminds.org.uk)

YoungMinds is the UK's leading charity committed to improving emotional wellbeing and mental health of children and young people.

[Shout: the UK's free, confidential and 24/7 mental health text service for crisis support](#) | Shout 85258

You can also contact Kooth [Home – Kooth](#) - Free online counselling support



#### Support and Advice for Parents

[Support & advice for parents](#) | [NSPCC 11-18s](#) | [CEOP Education](#)



Churchmead School  
*Life in all its fullness*

### [Half Term Safeguarding Notices](#)

Safeguarding you all continues throughout the half term.

If you have any safeguarding worries or concerns you can email:

[safeguard@churchmead.org](mailto:safeguard@churchmead.org)

If you feel as though you need someone to talk to, remember you can contact

Childline: <https://www.childline.org.uk/>

Or

KOOTH: [Home - Kooth](#)



If a crime is being committed or you feel like you are in immediate danger, you must contact the police on **999**



Churchmead School  
*Life in all its fullness*

Life

in all  
its

Fullness



Believe  
to  
Achieve

## PTA News

If you'd like to know more about what Churchmead's PTA do and how you can support or join us, why not come along to the next meeting? We're always looking for volunteers and members of the community to get involved.

Email [pta@churchmead.org](mailto:pta@churchmead.org) to find out more.

Churchmead School PTA are registered with easyfundraising, which means you can raise FREE donations for us every time you shop online. Over 4,000 shops and sites will donate to us when you use easyfundraising to shop with them – at no extra cost to yourself!

These donations really mount up and make a BIG difference to us and the school so we'd really appreciate it if you could take a moment to sign up and support us.

It's completely FREE and only takes a moment.

You can find our easyfundraising page by following this link:

<https://www.easyfundraising.org.uk/causes/churchmeadpta>



## Free School Meals Applications

It's quick and easy to apply for Free School Meals.

Scan the QR code or visit

<https://apply.cloud-foredu.org.uk/ofsm.rbwm>



Your child will be eligible for Free School Meals if you get any of these benefits:

- Income Support
- Income based Job Seekers Allowance
- Income related Employment & Support Allowance
- Support under V1 of the Immigration & Asylum Act 1999
- The Guarantee element of state pension credit
- Child Tax Credit, provided they are not entitled to Working Tax Credit and have an annual income (as assessed by HM Revenue & Customs) that does not exceed £16,900
- Working Tax Credit "run on" - the payment someone may receive for a further four weeks after they stop qualifying for Working Tax Credits



Please contact Heidi David if you need any help applying - [hdavid@churchmead.org](mailto:hdavid@churchmead.org)



## Keeping in Touch



01753 211 330



[office@churchmead.org](mailto:office@churchmead.org)



[@ChurchmeadChurchOfEnglandvaSchool](https://www.facebook.com/ChurchmeadChurchOfEnglandvaSchool)



[@Churchmead\\_insta](https://www.instagram.com/Churchmead_insta)



[@ChurchmeadSch](https://www.x.com/ChurchmeadSch)



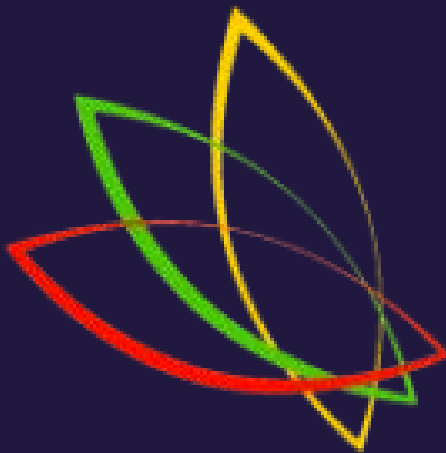
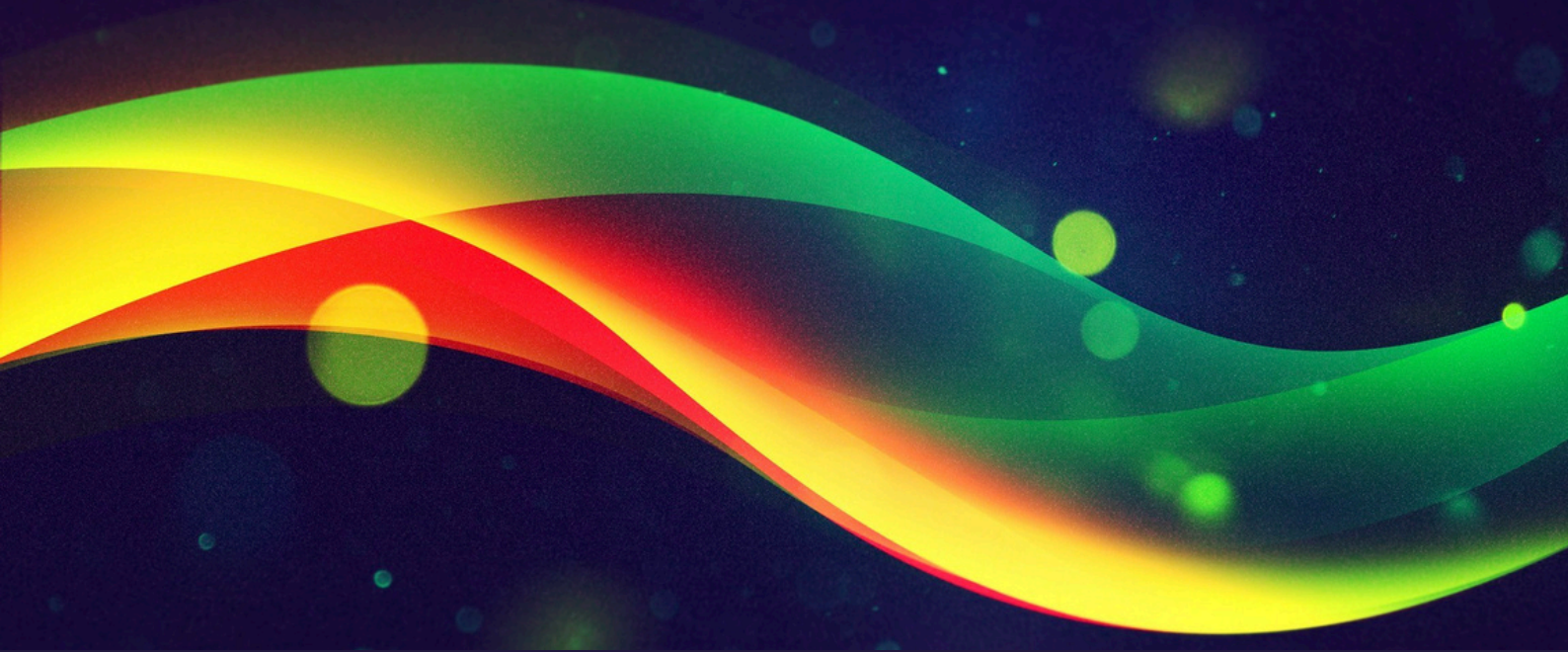
[www.Churchmead.org](http://www.Churchmead.org)

Life

in all  
its

Fullness





CHURCHMEAD SCHOOL