



Supporting our Community: Spiritual Support



Friday 26th of June

Mr. Kingsley Jones



Let us pray

Dear God

We ask for a flourishing community, where neighbours learn to love each other and come to know Jesus. We pray that we can be good stewards of Your love to each one of our neighbours. We ask that You help us to learn from our community, and it may be a place where all are welcomed.

Amen



Romans 12:9-17: Love in Action

⁹ Love must be sincere. Hate what is evil; cling to what is good. ¹⁰ Be devoted to one another in love. Honour one another above yourselves. ¹¹ Never be lacking in zeal, but keep your spiritual fervour, serving the Lord. ¹² Be joyful in hope, patient in affliction, faithful in prayer. ¹³ Share with the Lord's people who are in need. Practice hospitality.

¹⁴ Bless those who persecute you; bless and do not curse. ¹⁵ Rejoice with those who rejoice; mourn with those who mourn. ¹⁶ Live in harmony with one another. Do not be proud, but be willing to associate with people of low position.^[a] Do not be conceited. ¹⁷ Do not repay anyone evil for evil. Be careful to do what is right in the eyes of everyone.



What does *spiritual support* mean ?

Patient in affliction: Courage

Faithful in prayer: Commitment

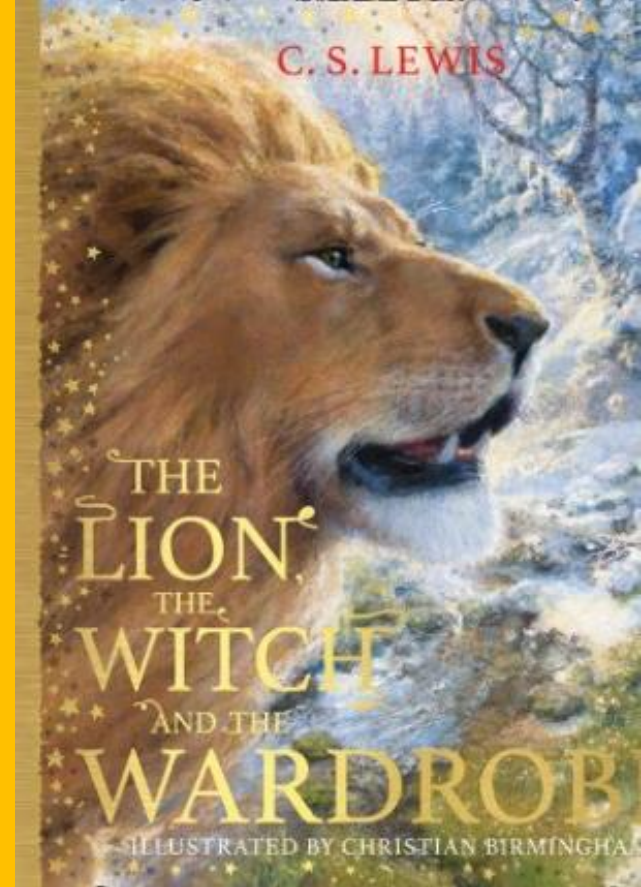
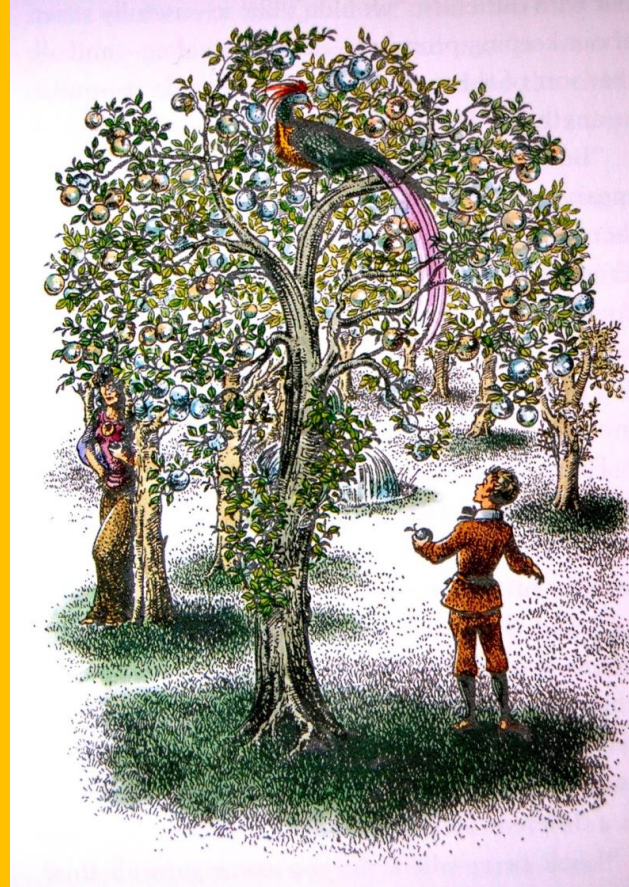


Spiritual
Support

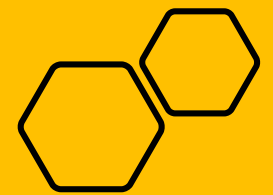


Share with the Lord's people in
need: Compassion

Be joyful in hope: Life in all its
fullness

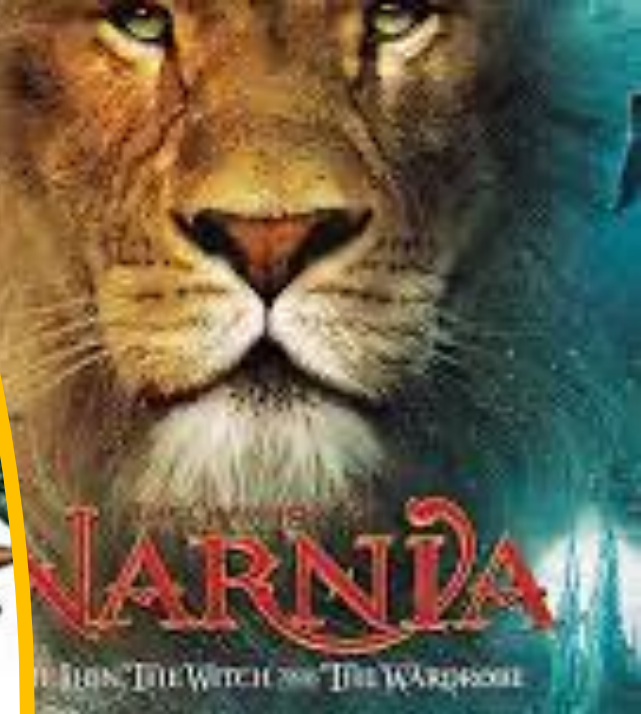


Who has heard of
The Chronicles of Narnia?



Brief Overview of Narnia

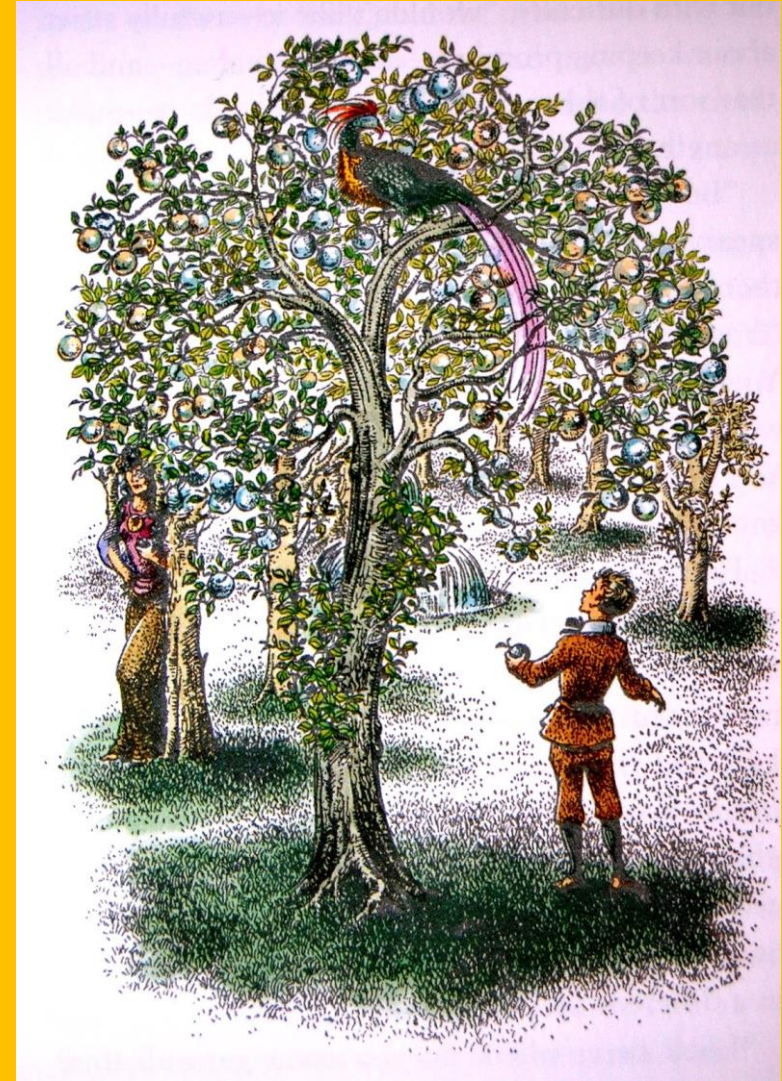
1. It is about a Magical World.
2. One of the most famous books in the series is called *The Lion, The Witch and The Wardrobe*.
3. It follows the story of four siblings- Peter, Susan, Edmund and Lucy- who stumble through a wardrobe into a magical world.
4. In the story, Aslan represents Jesus/God and the White Witch represents evil/the Devil.



To give us an idea of what Narnia is like, let's watch the trailer for the film.

[The Lion, The Witch and The Wardrobe](#)
[Trailer: Watch](#)

Think about what sort of place Narnia is. What makes it special?



Big Question

What do the characters of Narnia teach us about spiritual support and how that links to our school values?



commitment

Compassion

Courage: Patient in affliction: Peter

Courage: 'Peter was feeling uncomfortable too at the idea of fighting the battle on his own; the news that Aslan might not be there had come as a great shock to him.'

Patient in affliction (Romans 12:9-17): Peter finds himself having to face an affliction, a battle. Aslan is not going to be with him and Peter is shocked. Peter goes on to begin fighting the battle alone but then Aslan does come to the battle with a huge army and defeats the White Witch.

Supporting our community: How can we battle against injustice? What situations do we need to find patience in? What battles do we need Jesus to help us fight? What areas of our life do we need to let God in to?



Commitment: Faithful in prayer: Susan

Commitment: ‘Please, may we come with you- wherever you’re going?’ asked Susan. “Well-” said Aslan, and seemed to be thinking. Then he said, “I should be glad of the company.’

Faithful in prayer (Romans 12:9-17): In a moment of sadness and difficulty, Susan asks if she can stay with Aslan to keep him company, wherever he might be going. Susan stands by Aslan, a faithful friend even when all seems lost. Susan’s faithfulness to Aslan is the greatest prayer of all to God; to stand with Jesus when no one else will.

Supporting our community: Who in my life needs me to stay with them? Who do you need to be a faithful friend to? Who needs your prayer, support and love?

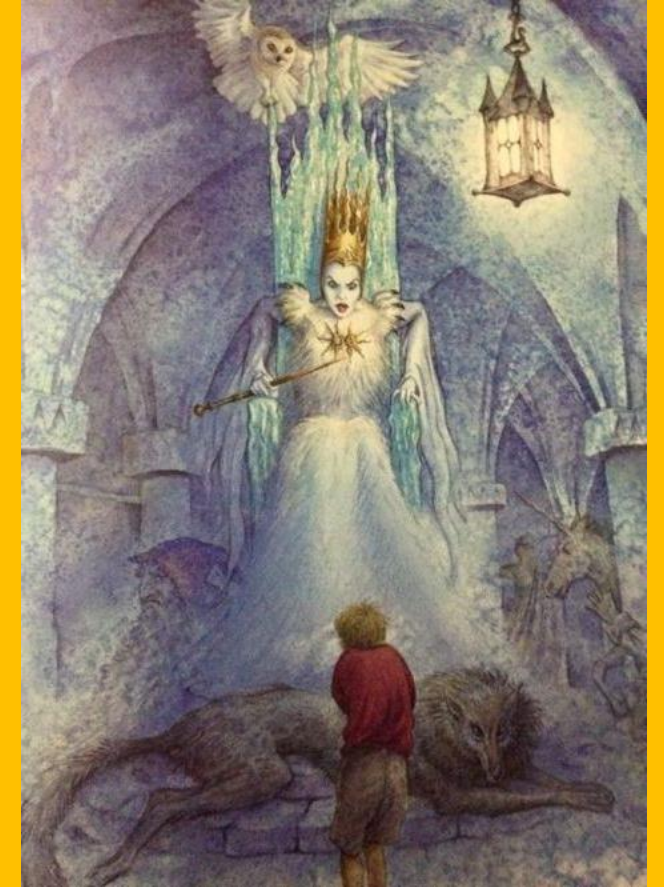


Compassion: Share with the Lord's people who are in need: Edmund

Compassion: “Here is your brother,” he said, “and- there is no need to talk to him about what is past.” Edmund shook hands with each of the others and said to each of them in turn, “I’m sorry,” and everyone said, “That’s all right.”

Share with the Lord's people who are in need (Romans 12:9-17): : Edmund betrayed his family and broke their trust. Peter, Susan and Lucy share with him the one thing that he is in need of- forgiveness.

Supporting our Community: Who is in need? Who do you know that is in need? What are they in need of? Your forgiveness? Do you share with those who are in need?



Life in all its fullness: Be joyful in hope: Lucy

Life in all its fullness: 'Lucy felt a little frightened, but she felt very inquisitive and excited as well. She looked back over her shoulder and there, between the dark tree-trunks, she could still see the open doorway of the wardrobe.'



Be joyful in hope (Romans 12:9-17): Lucy finds herself unexpectedly in a magical world- in a new world, full of possibility but different and wild. Her response is not to run away; to hide in the old world but to embrace the new world with joy and hope. Lucy sees the new world as one full of life and new experiences.



Supporting our community: When do new opportunities and possibilities open up for me in my life? Do I see these possibilities as full of life and hope? Or am I ruled by fear?

Take time to think about how, after learning about the characters from Narnia, you can spiritually support one another, live out the school's values and come to live life in all its fullness.

We are going to focus on a person now who spiritually supported millions of people through being a gift of hope to them.

Take
Time

Reflect

Life in all its fullness

Supporting our community: Honour one another above yourselves: Dame Vera Lynn

Dame Vera Lynn, the Forces Sweetheart, whose songs helped raise morale in World War Two, died last week at the age of 103. The singer was best known for performing her hit *We'll Meet Again* to troops on the front line in countries including India and Egypt.

The Queen echoed her famous WW2 anthem during a speech to Britons who were separated from families and friends during the coronavirus lockdown in April, telling the nation: 'We will be with our friends again, we will be with our families again, we will meet again.'

[Listen here to We'll Meet Again](#)

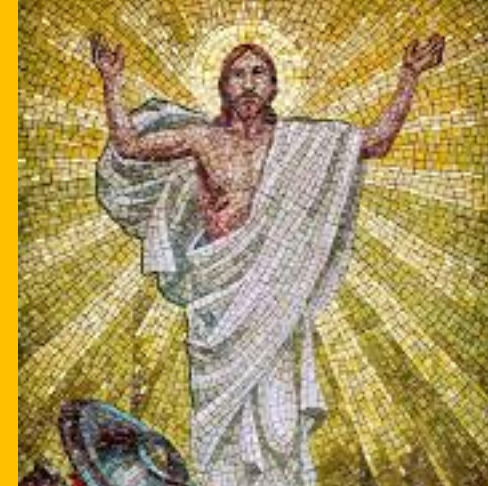


The Gift of Hope

Dame Vera Lynn gave the gift of hope to soldiers and armed service men and women who were facing some of the darkest hours that our country and entire world have ever seen.

If the Christian faith can be summarized in one sentence it is probably that God gives us all the gift of hope through the resurrection of Jesus.

How can you be a gift of hope for someone else?



What does all this mean to you? What does this mean to our community?

I want to end by asking you five questions to go away and think about.

Once you have gone away and thought about the questions you'll probably have a better understanding of what this all means for you and for our community.





Courage: How can we be more like Peter and face difficulties head on with a strong conviction?

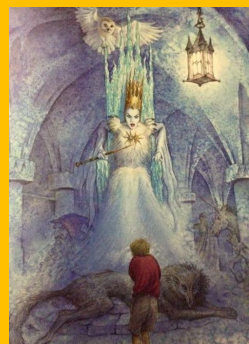


Life in all its fullness: How can we be more like Lucy and find joy in the new experiences God gives us?

Commitment: How can we be more like Susan and stand with others when they need it the most?



Gift of Hope: How can we be more like Dame Vera Lynn and give hope to others?



Compassion: How can we be more like Edmund and receive other people's forgiveness as well as forgive others?





Dear God,
Give us the **courage** to take up
new opportunities,
The **compassion** to help and
support one another,
And the **commitment** to our
learning and our community.
Help us to **believe**, so that we
can **achieve**, and **excel** in all
that we do.
In the name of the **Father**, the
Son and the **Holy Spirit**,
Amen.



CHURCHMEAD
SCHOOL