

Year 8

Geography

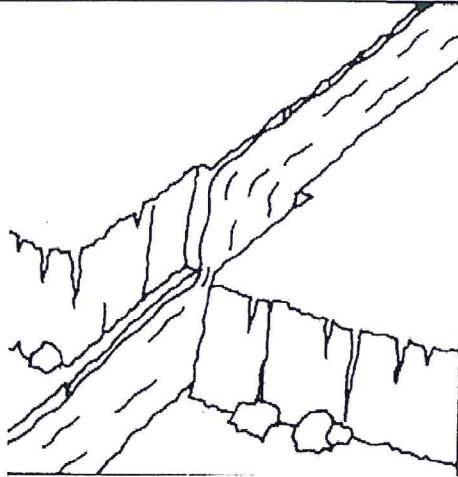
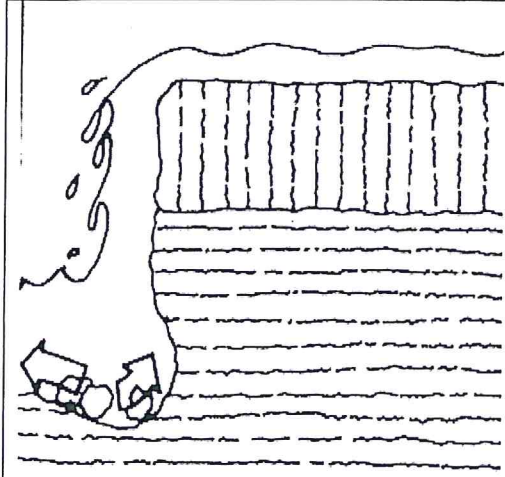
Rivers

Booklet



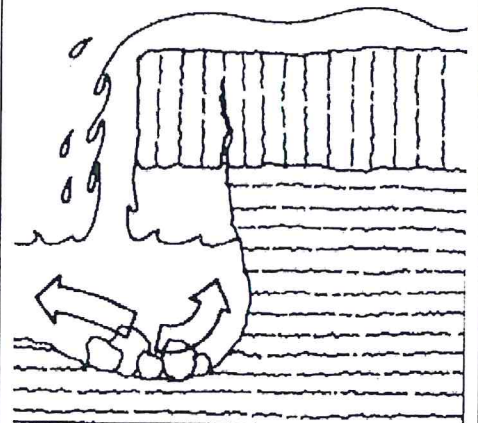
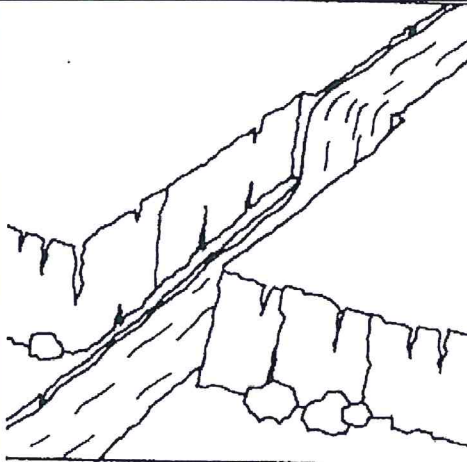
## How do waterfalls form?

Cut out the boxes below. Match the text with 2 diagrams.

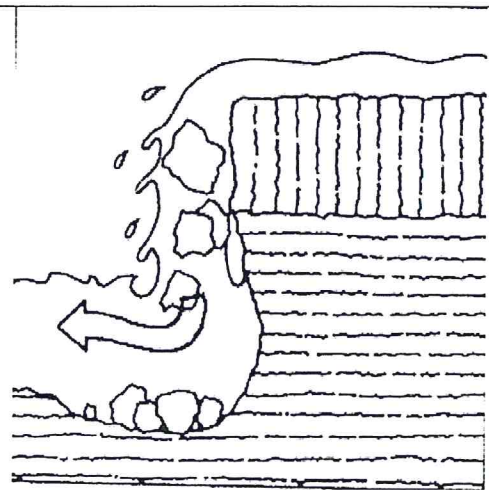
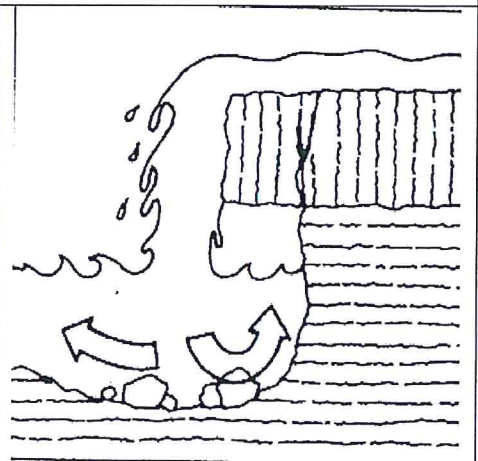
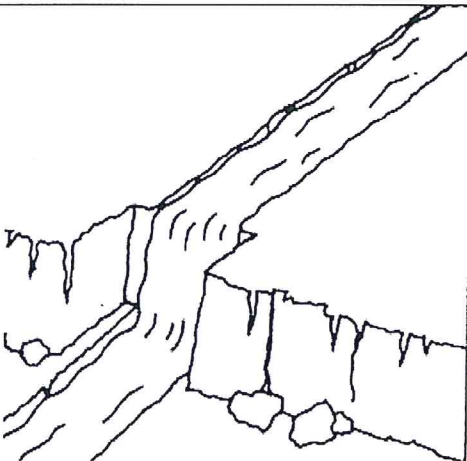


Over time the overhang will collapse into the plunge pool where the rock will be eroded into smaller fragments

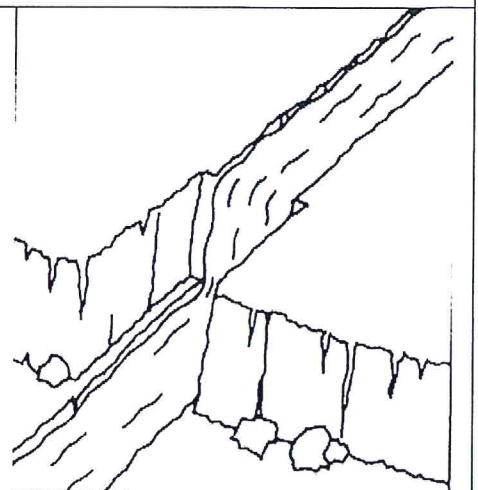
The river continues to erode the softer rock leaving the hard rock unsupported. Cracks begin to develop.



The waterfall moves backwards (retreats) and a gorge is created. The process begins again.

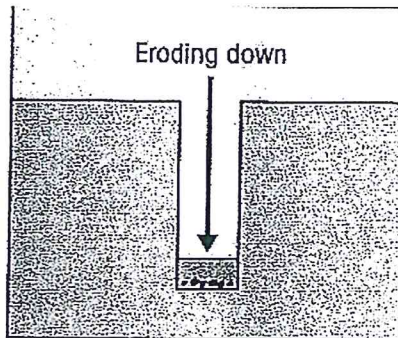
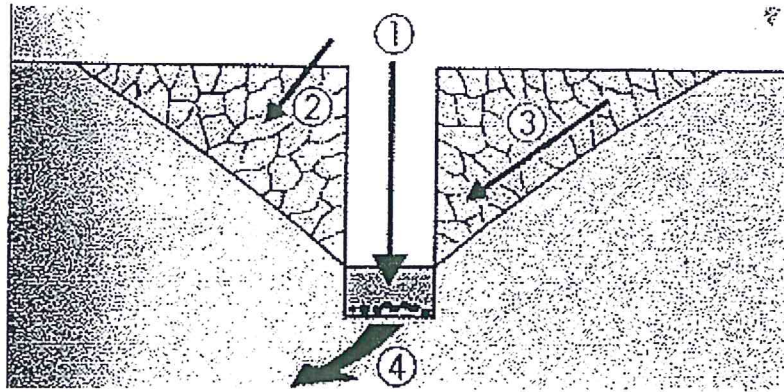


The river flows over the hard resistant rock and erodes the soft rock that it comes to. Gradually a deep lake called a plunge pool is created.





# How does a river valley form?



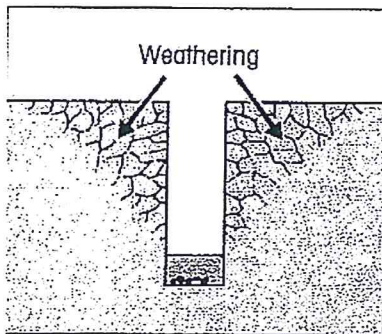
---

---

---

---

---



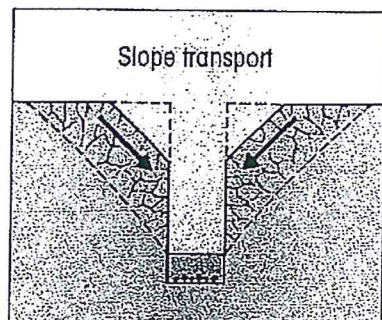
---

---

---

---

---



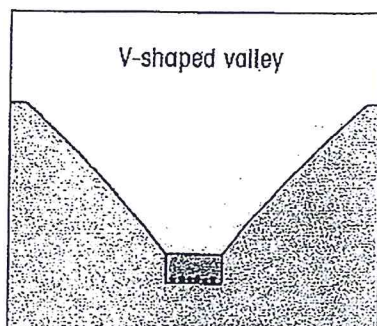
---

---

---

---

---



---

---

---

---

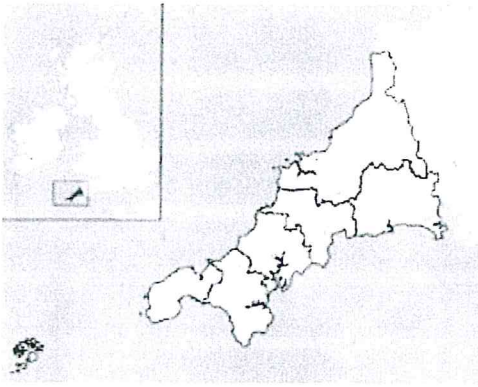
---





How did Mrs George come across a brand new pair of walking boots?

1. Location – write a detailed description of the place that we are going to study today.



---

---

---

---

---

2. Write down three of the main causes of this event.

- a) \_\_\_\_\_
- b) \_\_\_\_\_
- c) \_\_\_\_\_

3. Write down three of the main effects of this event.

- a) \_\_\_\_\_
- b) \_\_\_\_\_
- c) \_\_\_\_\_

4. In your own words using the statements to help you, try to explain how Mrs George got these new walking boots.

This image shows a single sheet of white paper with horizontal blue or grey ruling lines. The lines are evenly spaced and run across the width of the page. There are approximately 20 lines visible. The paper appears to be a standard notebook page or a sheet of stationery. There is no handwriting or other markings on the page.





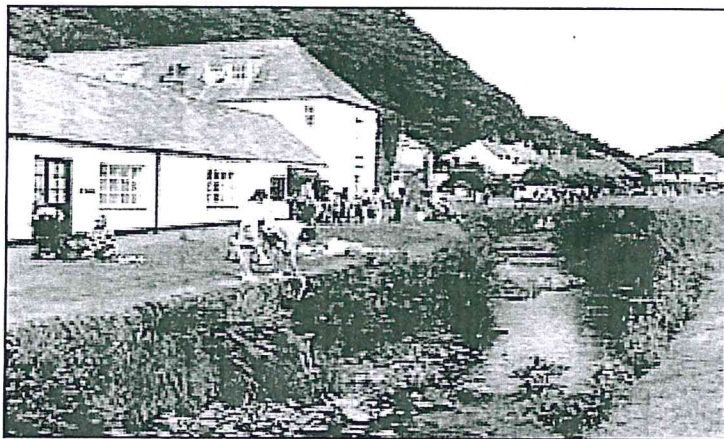
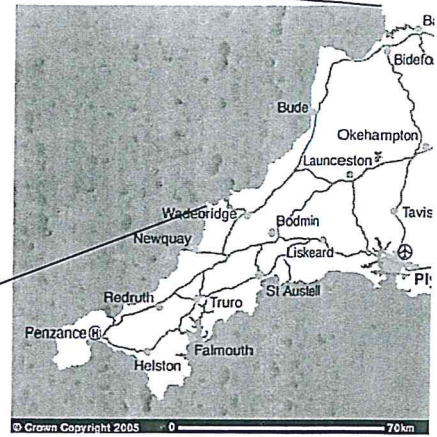
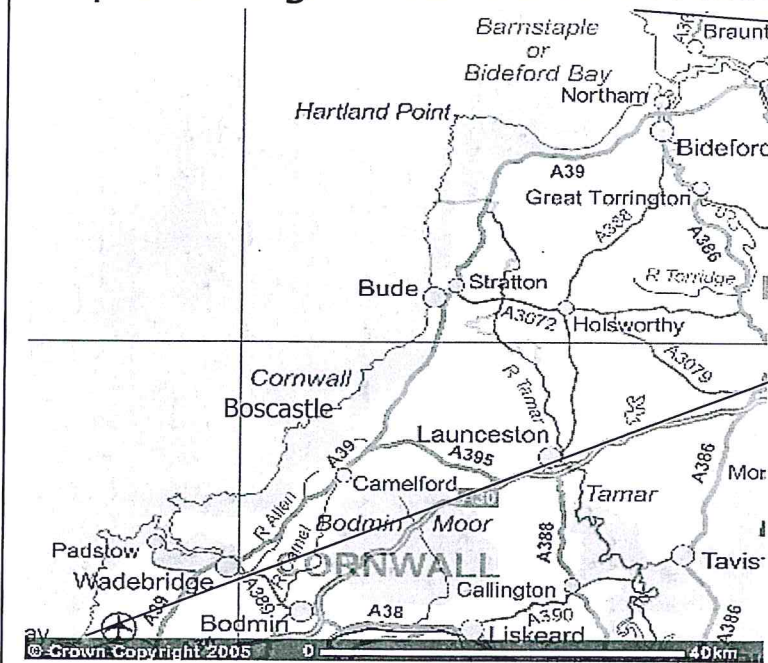
## Boscastle Flood

People often like to walk their dogs along the beaches of North Cornwall.	The rainfall caused a two-metre high wall of water to rush through the village.
On the 16 <sup>th</sup> of August 2004 75mm of rain fell over North Cornwall in 2 hours, 200mm over the whole afternoon.	The water was channelled through the village. An estimated 20.1 million tonnes of water flowed through the village.
Buildings and cars were washed into the sea.	Two rivers meet, the Valancy and the Jordan, meaning twice as much water flowing in.
The floods come exactly 52 years to the day after floods swept through Lynmouth, in Devon.	The ground in the area was saturated, this meant the rain just sat on or ran over the surface.
Trees were washed down the street by the river and three shops were completely wrecked.	The rain was torrential, with really heavy rain and storms causing water flow down the village.
A local businessman lost the whole front of his shop and £10-15,000 of stock.	Heavy rain was forecast but not the exact spot. If it had been 20 miles up the road, the situation would have been different
The river broke its banks and went straight through the car park, taking many cars with it.	The river had to be widened and deepened so that it could carry more H2O
The sudden deluge caused two nearby rivers to burst their banks and a torrent of water to sweep through the village's main street	Material moves along this stretch of coastline from south to north.
Residents were airlifted by helicopters, with up to 12 or 13 people in each helicopter.	Sections of the South West Coast Path near Boscastle in Cornwall have been closed because of flood damage.
The drainage and topography of the surrounding area was the ultimate cause of the scale of the flood.	Some people lost up to 60% of their income for the year, because they rely on tourism during the summer.
Often people leave clothes and shoes on the beach and forget that the tide comes in!	The sewerage, the car park, and the infrastructure all need to be rebuilt.
Hartland is about 25miles north of Boscastle.	Cars were spotted floating down the coast days later.

**How did Mrs George come across a brand new pair of walking boots?**



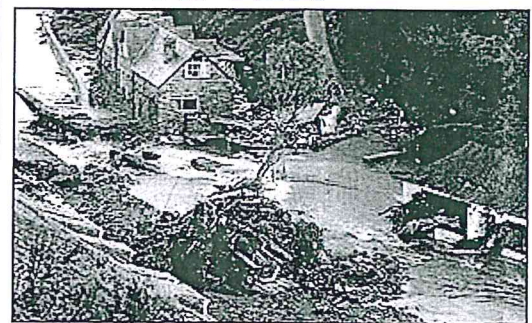
## Map showing Hartland and Boscastle.



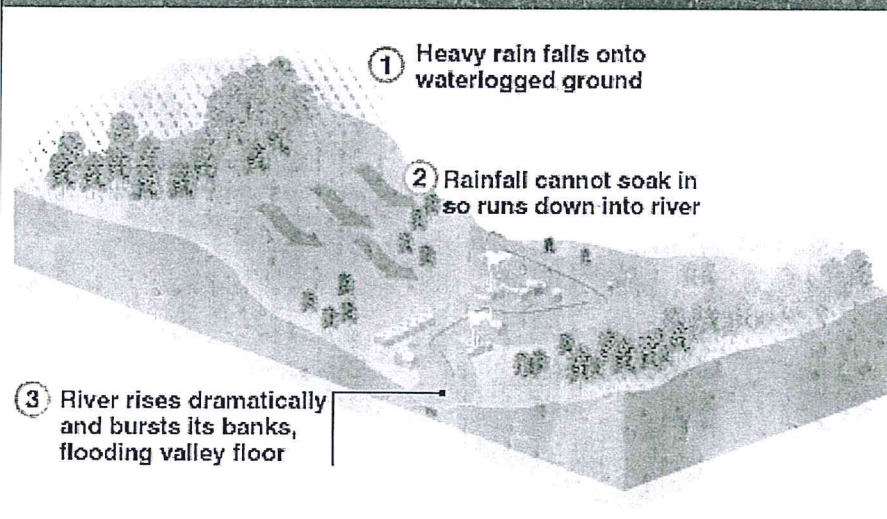
**BEFORE**



**AFTER**



### HOW FLASH FLOODS OCCUR





# UK Flooding July 2007

Background Information about the area affected in the UK

Causes of the flooding



Effects of the flooding



Responses to the flooding

