

Friday 16<sup>th</sup> January 2026

# Churchtown Chatter

Newsletter 17



Joy



Acceptance



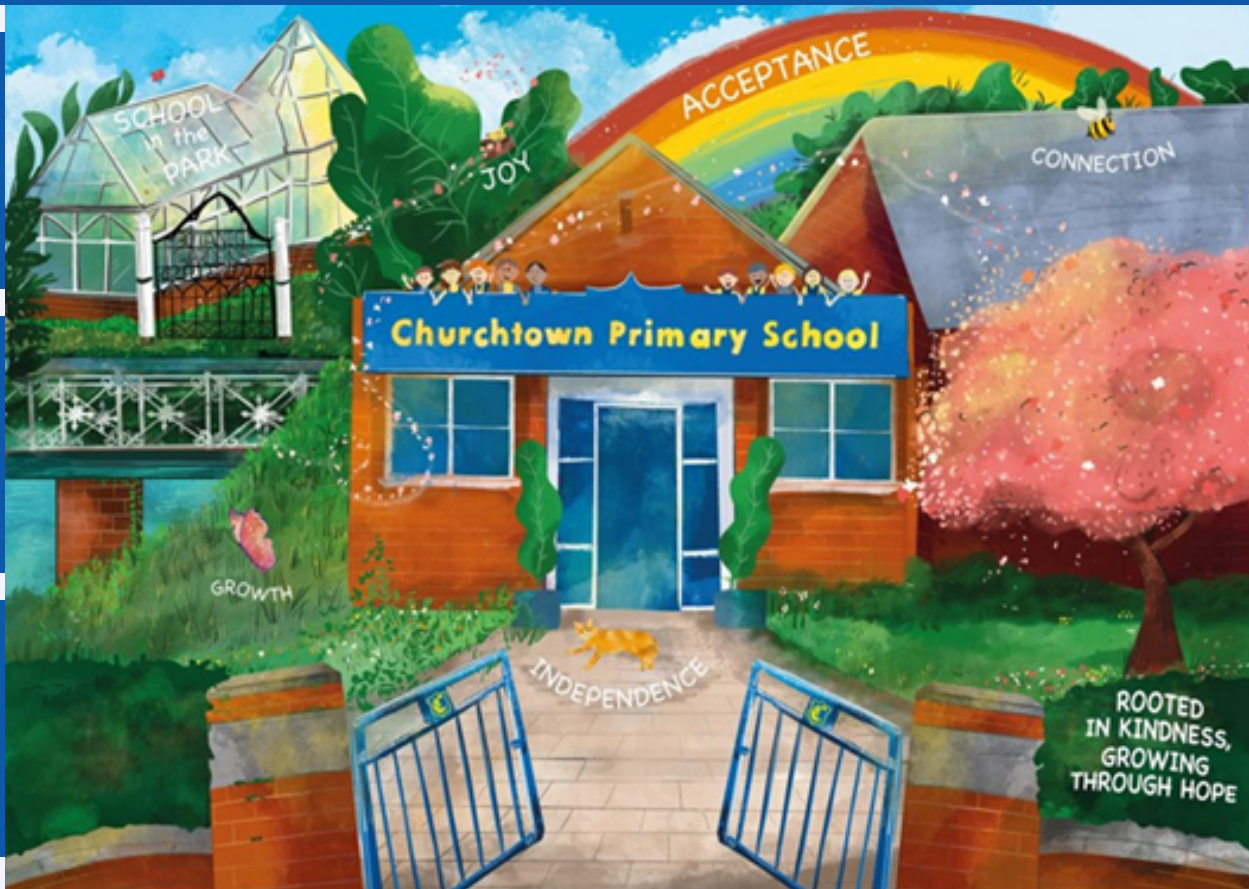
Connection



Independence



Growth



## A message from the Headteacher:

This year, our newsletter will begin to highlight events taking place in Southport, helping to showcase opportunities within our local area. First up is Lightport, details of which can be found in this week's newsletter. This links to a focus on developing creativity, wellbeing and opportunity through shared experiences and festivals. We will keep you updated on how our school may be involved as plans develop.

You will notice that a number of educational visits are now being added to the Dates for Your Diary section of the newsletter. Letters and Arbor bookings will be opening soon for these visits, which promise to be exciting and valuable experiences for the children.

Please keep an eye out for further information.

We would also like to congratulate the children who were announced last week as members of our Eco Committee. Well done to them all. The committee has already got off to a fantastic start, with the recent Tub2Pub campaign collecting over 80 tubs, a brilliant achievement and a great example of our pupils working together to make a difference. We are really looking forward to seeing what they achieve next.

**Have a great weekend, from Mrs Payne**

### Contact:

01704 508500

Follow us on:

### Twitter:

@ChurchtownSch

### Facebook:

Churchtown  
Primary School



# Attendance

*This week's attendance champions are:*

**Bluebells**

*for having 100% attendance!*



*The year group with the highest attendance this week is:*

**Reception with 99.5%!**

*Well done everybody!*



## Baby and Toddler Group Update

Please note that following our earlier communication, the Baby and Toddler Group held every Monday will **remain cancelled on Monday 19th January** due to staff absence.

But we are pleased to confirm that the group will commence again on **Monday 26th January.**

Thank you for your continued understanding, and we look forward to welcoming you back!

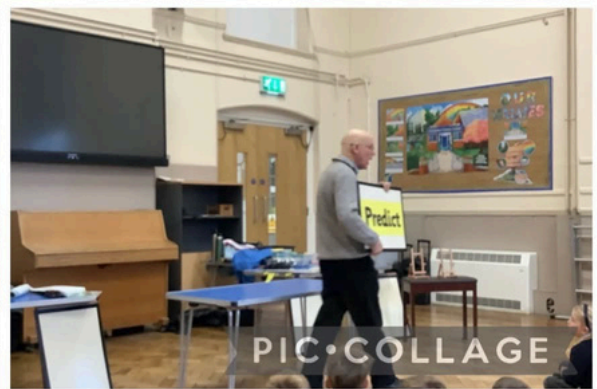
If you have any questions in the meantime, please feel free to get in touch with the school office.





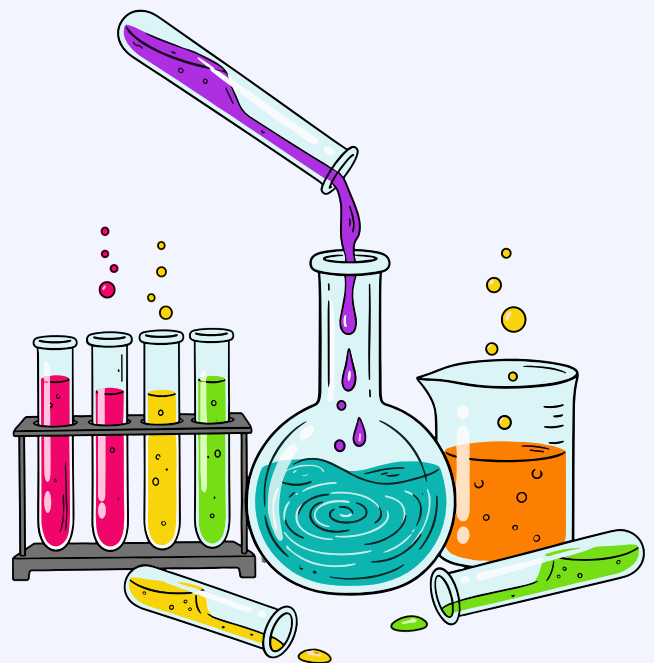


# Science Shows



Year 1 had a great morning on Monday as they were visited by Adrian's Travelling Science Show!

Adrian talked the children through a range of 'working scientifically' skills and carried out some exciting experiments! The children loved the show and were talking about the exploding 7UP all day!





Book NOW  
Via Arbor!



## Butterflies Spring Holiday Club

16<sup>th</sup>, 17<sup>th</sup>, 18<sup>th</sup>, 19<sup>th</sup> & 20<sup>th</sup> February 2026

7:30am~5:30pm

£30 per session ~ includes healthy snack, planned & free play activities including role play, arts & crafts, cookery, games, outdoor play ~ and much more!

Please provide a packed lunch

Please note: Butterflies Holiday Club will only operate if bookings exceed the minimum required number

## Eco Update: Tub2Pub

Thank you to everyone who supported our Tub2Pub collection by bringing in clean, empty plastic confectionery tubs. We are pleased to share that we collected over 80 tubs in total.

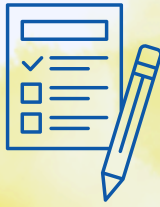
The tubs are now being sent to The Bold Arms (a Greene King pub) to be recycled. Once weighed, the proceeds from recycling will be donated to Tub2Pub's national charity partner, Macmillan Cancer Support.

Many of these tubs cannot be recycled through regular kerbside collections, so your efforts have helped ensure they are recycled responsibly rather than ending up in landfill.

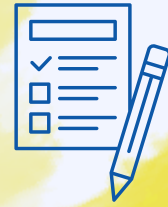
Thank you to everyone who took part and helped make this eco initiative a success.  
Mrs Stalker & Miss Cornish







# **KS2 SATs Y6** **parent meeting:** **Tuesday 20th** **January 3.30pm**



We will be holding a meeting for parent/guardians of Y6 children to explain more about the upcoming KS2 SATs. The meeting will take place in the Main Hall. Exit from the meeting will be via the Lodge Gate.

## Content during the session will include:

- the format of the 2026 tests
- sharing sample materials
- how pupil results will be calculated in line with National Standards
- suggestions as to how you can help your child at home

We feel that it is important to share with our Y6 parents/guardians, the guidance concerning how children will be assessed both by the teacher and in national tests, so that you are able to understand the system and support us, and your children, in the lead up to the SATs tests in May.

We understand some families may not be able to attend due to work/other commitments. The PowerPoint from the session will be available on the website and shared after the meeting.

To confirm your attendance, please click the link to complete the form below:

[KS2 SATs Y6 Parent/Guardian Meeting – Tuesday 20th January at 3.30pm – Fill in form](#)

# **Eco Post: RSPB Birdwatch** **23<sup>rd</sup> to 25<sup>th</sup> January 2026**

On Monday 23rd January, during assembly, the children will be hearing all about the Big Garden Birdwatch. Every year, the RSPB ask the public to take part in the world's largest garden wildlife survey. Last year across the UK, over 590,000 people took part in Big Garden Birdwatch 2025, counting a whopping 9.1 million birds. With birds facing so many challenges, it's more important than ever to get involved in the Birdwatch. Every bird you do – or don't – count will give them a valuable insight into how garden birds are faring.

If you are interested in taking part, then please sign up to <https://www.rspb.org.uk/whats-happening/big-garden-birdwatch>

Mrs Stalker and Miss Cornish would love to hear about your findings! Please let us know by either telling us, or emailing the office with photographs & pictures etc.

Also, we will be taking part in the BIG SCHOOL Birdwatch (more information to follow).



**BIG**  
**Garden**  
**Birdwatch**





# Mad Dogs & Crazy Pups!



A fantastic group of children and adults from the community will be taking part in the Mad Dog 10K and Crazy Pups Run in Southport on the 8<sup>th</sup> February, all in support of Alice's WonderDance.

The Crazy Pups will lead the way by running the 1K children's race, and there's already have a brilliant group of young runners signed up and ready to go, they are pictured below. They'll be followed by an amazing team of around 60 adults taking on the Mad Dog 10K.



Our Crazy Pups Team!

How You Can Help  
Any donations to support the runners  
and raise money for Alice's  
WonderDance would be hugely  
appreciated.

Donate here:

[www.justgiving.com/page/sarah-grahamlang-3](http://www.justgiving.com/page/sarah-grahamlang-3)

## Want to Get Involved?

If any children or adults would like to join the Mad Dog or Crazy Pups there's still time. [Sign up here!](#)

Please email Sarah Lang (parent) at **[sarah80graham@hotmail.co.uk](mailto:sarah80graham@hotmail.co.uk)** to join the team raising money for Alice's Wonderdance.

Thank you for your support, encouragement and generosity as our runners take on this challenge for such an incredible charity.



AN IMMERSIVE LIGHT AND SOUND EXPERIENCE  
THAT WILL WRAP YOU IN A RAINBOW

# LIGHT PORT



14 - 16 FEBRUARY | 17.00 - 21.00 | FREE  
LORD STREET, SOUTHPORT  
[WWW.SOUTHPORT26.COM](http://WWW.SOUTHPORT26.COM)



LIVERPOOL  
CITY REGION  
PARTNER

METROMAYOR  
LIVERPOOL CITY REGION



LIVERPOOL CITY REGION  
DESTINATION PARTNERSHIP

Sefton Council





# Dates for your Diary

| <u>Date</u>   | <u>Event</u>   |
|---|--|
| Monday 19 <sup>th</sup> January 2026                            | Science Show (Y2&Y5)   |
| <b>Tuesday 20<sup>th</sup> January 2026</b>                     | <b>Y6 KS2 SATs meeting for parents/families</b>                              |
| Tuesday 27 <sup>th</sup> January 2026                           | Year 1- Imagine That! Educational Visit                                      |
| Monday 29 <sup>th</sup> January 2026                            | Year 3 Personal Best Festival  |
| 2 <sup>nd</sup> - 6 <sup>th</sup> February 2026                 | National Storytelling Week   |
| Monday 2 <sup>nd</sup> February 2026                            | Sean Perkins Author Visit (part of National Storytelling week)               |
| Tuesday 10 <sup>th</sup> February 2026                          | Safer Internet Day   |
| Friday 13 <sup>th</sup> February 2026                           | Love My Community Day (mufti day, £1 voluntary donation)                     |
| Monday 16 <sup>th</sup> - Friday 20 <sup>th</sup> February 2026 | Half Term Week   |
| Wednesday 25 <sup>th</sup> February 2026                        | Parent's Evening   |
| Thursday 26 <sup>th</sup> February 2026                         | Year 3&4 Gymnastics Competition  |
| Tuesday 3 <sup>rd</sup> March 2026                              | Year 2 EFC Football  |
| <b>Tuesday 3<sup>rd</sup> March 2026</b>                        | <b>Year 4 (Birch &amp; Pine) Educational Visit to Liverpool World Museum</b> |
| Wednesday 4 <sup>th</sup> March 2026                            | World Book Day   |
| <b>Thursday 5<sup>th</sup> March 2026</b>                       | <b>Year 4 (Willow) Educational Visit to Liverpool World Museum</b>           |

**Any text in red is a new addition to the calendar**

# Dates for your Diary

| <u>Date</u>  | <u>Event</u>  |
|--|---|
| Friday 6 <sup>th</sup> March 2026                          | Y5&6 Sports Hall Athletics  |
| 9 <sup>th</sup> - 13 <sup>th</sup> March 2026              | National Science Week   |
| Monday 16 <sup>th</sup> March 2026                         | Year 3 (Elm) Educational Visit to Martin Mere<br>Wetland Settlers |
| Tuesday 17 <sup>th</sup> March 2026                        | Year 3 (Fir) Educational Visit to Martin Mere<br>Wetland Settlers |
| Wednesday 18 <sup>th</sup> March 2026                      | Reception Educational Visit to Windmill Farm                      |
| Monday 23 <sup>rd</sup> March 2026                         | Year 3 (Oak) Educational Visit to Martin Mere<br>Wetland Settlers |
| Monday 23 <sup>rd</sup> March 2026                         | Year 5 'The Past Presents' Greek Day (In School)                  |
| Tuesday 24 <sup>th</sup> March 2026                        | Year 5 'The Past Presents' Greek Day (In School)                  |
| Wednesday 25 <sup>th</sup> March 2026                      | Swimming Gala   |
| Monday 23 <sup>rd</sup> March 2026                         | Year 1 EFC Football   |
| Friday 27 <sup>th</sup> March 2026                         | School closes at 1:30pm for the Easter Holidays!                  |
| Monday 13 <sup>th</sup> April 2026                         | Back to school, rise and shine, school starts at<br>ten to nine!  |
| Thursday 7 <sup>th</sup> May 2026                          | Buttercups Nursery Educational Visit to Martin<br>Mere            |
| Friday 8 <sup>th</sup> May                                 | Class Photographs   |
| Monday 25 <sup>th</sup> - Friday 29 <sup>th</sup> May 2026 | Half Term Week  |

Any text in red is a new addition to the calendar



# Dates for your Diary

| <u>Date</u>                       | <u>Event</u>   |
|-----------------------------------|--|
| Friday 17th July 2026             | End of Term- School closes at 1:30pm for Summer Holidays |
| Monday 20 <sup>th</sup> July 2026 | INSET Day  |

Any text in red is a new addition to the calendar



### Butterflies Holiday Club

Age: Nursery (Buttercups) – Y6

Time: 7.30-5.30 Location: Dining Hall

Entrance/Exit: Butterflies Door  
(previous F4K/BC entrance/exit)

Price: **£30.00**

Food: Snack provided school  
Packed lunch to be provided

Monday 16th to Friday 20th February 2025 – Half-Term Holiday

Monday 30th March to Friday 10th April 2026 – Easter Holiday

CLOSED – Friday 3rd & Monday 6th April 2026 (Good Friday and  
Easter Monday Bank Holidays)

CLOSED – Monday 4th May 2026 (Early May Bank Holiday)

CLOSED – Monday 25th May 2026 (Spring Bank Holiday)

Tuesday 26th to Friday 29th May 2026 – Half-Term Holiday

Monday 20th July 2026 – INSET Day

Tuesday 21st July to Friday 28th August 2026 – Summer Holidays

CLOSED – Monday 31st August 2026 (Summer Bank Holiday)

## Nursery Snowdrops (open 51 weeks of the year)- closure dates 2026



CLOSED – Friday 3rd & Monday 6th April 2026 (Good  
Friday and  
Easter Monday Bank Holidays)

CLOSED – Monday 4th May 2026 (Early May Bank  
Holiday)

CLOSED – Monday 25th May 2026 (Spring Bank  
Holiday)

CLOSED – Monday 31st August 2026 (Summer Bank  
Holiday)



# 2026/27 Term Dates

|   |  |
|---|--|
| <b>Tuesday 1<sup>st</sup> September 2026</b>                          | <b>INSET Day</b>   |
| <b>Wednesday 2<sup>nd</sup> September 2026</b>                        | <b>INSET Day</b>   |
| <b>Thursday 3<sup>rd</sup> September 2026</b>                         | <b>Back to school, rise and shine, school starts at ten to nine!</b> |
| <b>Friday 23<sup>rd</sup> October 2026</b>                            | <b>INSET Day</b>   |
| <b>Monday 26<sup>th</sup>- Friday 30<sup>th</sup> October 2026</b>    | <b>Half Term Week</b>  |
| <b>Monday 2<sup>nd</sup> November 2026</b>                            | <b>Back to school, rise and shine, school starts at ten to nine!</b> |
| <b>Friday 18<sup>th</sup> December 2026</b>                           | <b>End of Term- School closes at 1:30pm for Christmas Holidays</b>   |
| <b>Monday 4<sup>th</sup> January 2027</b>                             | <b>INSET Day</b>   |
| <b>Tuesday 5<sup>th</sup> January 2027</b>                            | <b>Back to school, rise and shine, school starts at ten to nine!</b> |
| <b>Monday 15<sup>th</sup>- Friday 19<sup>th</sup> February 2027</b>   | <b>Half Term Week</b>  |
| <b>Thursday 25<sup>th</sup> March</b>                                 | <b>End of Term for Easter Holidays</b>                               |
| <b>Friday 26<sup>th</sup> March- Friday 9<sup>th</sup> April 2027</b> | <b>Easter Holidays</b>   |
| <b>Monday 12<sup>th</sup> April 2027</b>                              | <b>Back to school, rise and shine, school starts at ten to nine!</b> |
| <b>Monday 3<sup>rd</sup> May 2027</b>                                 | <b>Bank Holiday</b>  |
| <b>Monday 31<sup>st</sup> May- Friday 4<sup>th</sup> June 2027</b>    | <b>Half Term Week</b>  |
| <b>Tuesday 20<sup>th</sup> July 2027</b>                              | <b>End of Term- School closes at 1:30pm for Summer Holidays</b>      |
| <b>Wednesday 21<sup>st</sup> July 2027</b>                            | <b>INSET Day</b>   |