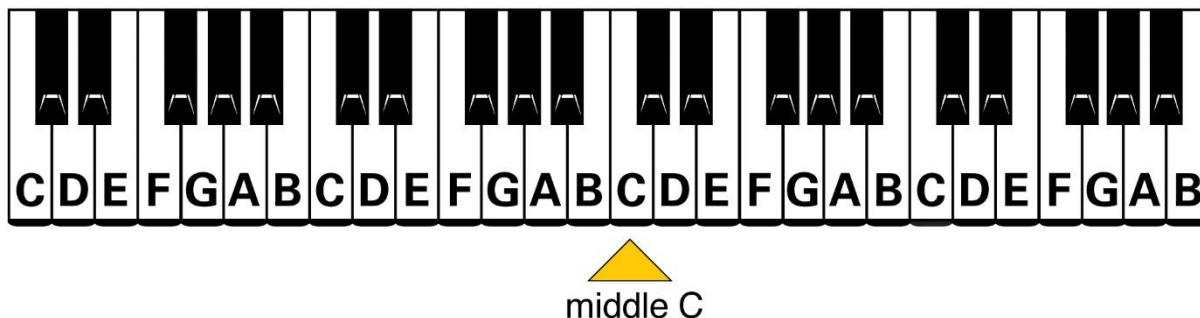
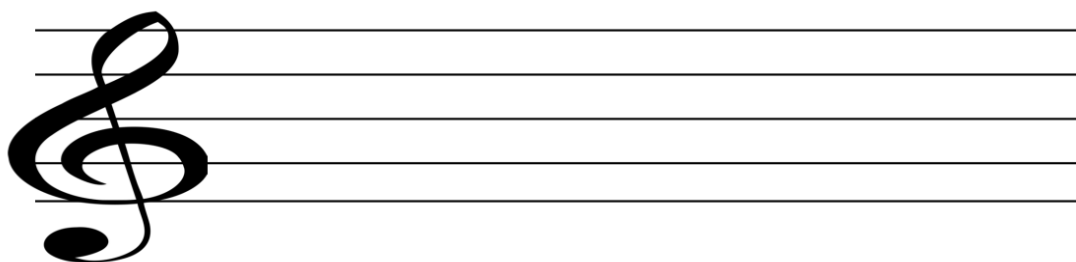


KEYBOARD/PIANO – Homework, Week 5



Say **“HELLO”** to the **Treble clef** ! Which hand should we use to play in **Treble Clef** ? Next week will see where some of the above notes live on the Treble Clef.



The Treble Clef sits on five lines....called a **STAVE**.

What is the **Bass clef** ? Which hand should we use to play in **Bass clef** ? Which side of Middle C should we play ?



KEEP PRACTISING- (using ALL fingers):-

“Mary Had A Little Lamb”

“Twinkle, Twinkle, Little Star”

“Old MacDonald Had A Farm”

“This Is Up, This Is Down”

