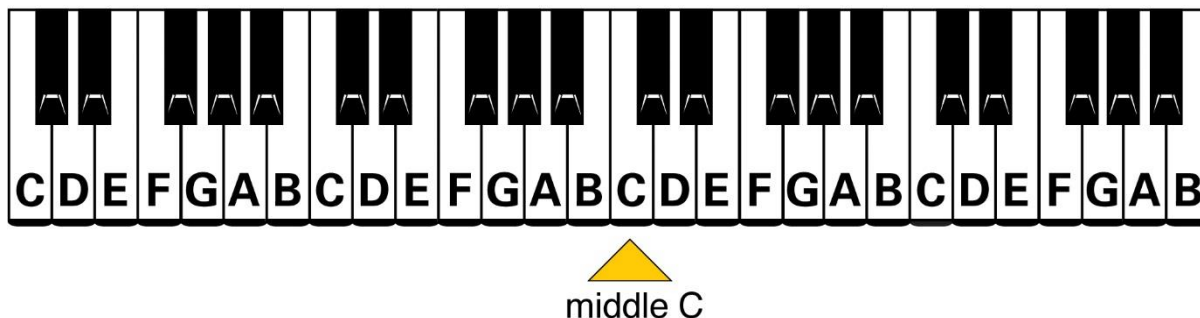
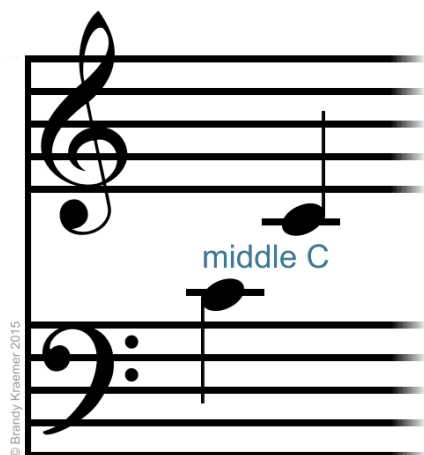


## KEYBOARD/PIANO – Homework, Week 6



Please WELCOME “Middle C”! It lives on it’s own special line at the bottom of the treble clef...and at the top of the bass clef.



Next week we will add another note to the clefs – but remember where to find “Middle C” first.

### LONDON BRIDGE IS FALLING DOWN

DEDC BCD ABC BCD

DEDC BCD ADBG

### KEEP PRACTISING- ( using ALL fingers ):-

“Mary Had A Little Lamb”

“Twinkle, Twinkle, Little Star”

“This Up This Is Down” (try this one with two hands !)

“This Is Up, This Is Down”