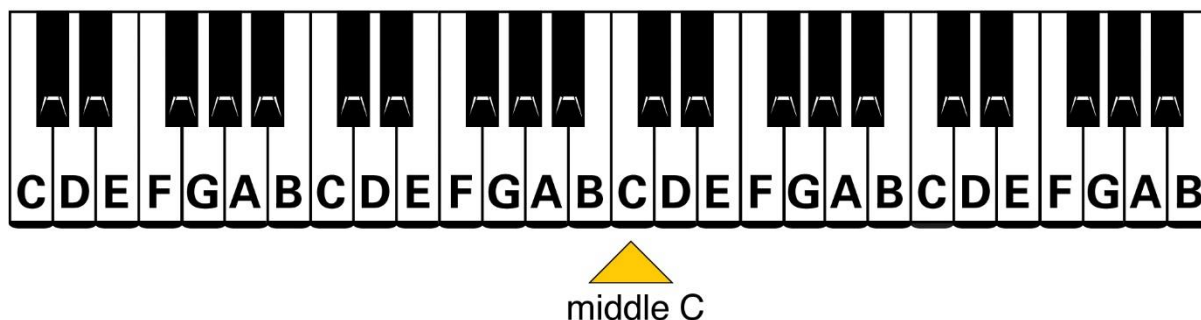
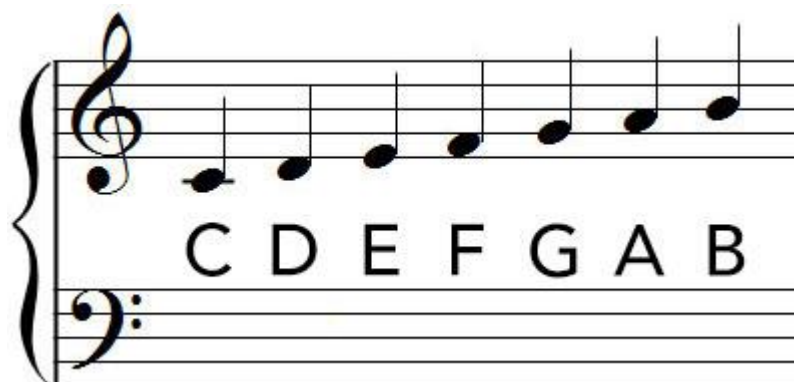


## KEYBOARD/PIANO – Homework, Week 7



This is how we find the notes in the TREBLE CLEF (right hand). Some of the notes sit in spaces...and some of the notes sit on lines.



### QUIZ TIME ! –

1. How many notes in an **OCTAVE** ?
2. Why should we hold our hands like a **SPIDER** ?
3. How do we start a drumbeat on the keyboard ?
4. Where is the **SUSTAIN** pedal on the piano ?....and what does it do ?

**KEEP PRACTISING-** but don't forget to **WASH YOUR HANDS !**



