



Dear Parents/Carers,

Summer is well under way at CHS and it is wonderful to see so many children taking part in arts and sporting events beyond the school gates. Please check out our school calendar <https://chs.solihull.sch.uk/calendar> to see the range of exciting things we have planned.

We are starting to prepare for transition and have been busy planning out classes and staff allocation. Please look out for the new class overview that will be released shortly. Transition is a time where we pass on a range of information to new class teachers including aspects of learning, SEND needs, welfare needs and all things critical to make sure our children settle into the new school year with ease. This half term, we will be having some transition time in new classrooms and meeting any new members of staff joining the school.

Our Year 6 children worked incredibly hard during SATs week, we are very proud of them and know they answered every question to the best of their ability.

SAVE THE DATE: THIS YEAR, OUR SUMMER FAMILY FAYRE WILL BE ON **SATURDAY 6th JULY 10am to 12pm**. We will be sending some communication out about stalls but please let us know if you want to support us.

We recently held our third Culture Day. This was a huge success and we have more days planned in for the next academic year.

Our residential has taken place this term, it has been fantastic to see so many children accessing these. I would like to thank all of those involved in planning and attending the residential.

Kind regards,

Miss Budd

REMINDERS

INSET Days: Friday 21st June 2024 / Monday 22nd July 2024
General Election: Thursday 4th July 2024 (School Closed to Pupils)
Break Up for the Summer: Friday 19th July 2024
SUMMER FAYRE: Saturday 6th July 2024 – everyone welcome!

Your Child's Attendance and Punctuality Matters

In the line at 10 to 9!

The formal school day for Years 1-6 **starts at 8.50am**. (Nursery and Reception start times vary).

If your child arrives after 8.55am they are late and will need to report to the school office.

Child's absence needs to be reported to the school office on the 1st day before 9.15am.

Appointment cards need to be shown for all appointments so that these can be authorised.

This is the parents/carers responsibility

Regular school attendance is essential to ensure children make good progress and enjoy their education



"Going for Gold" Attendance Mission. Next term let's reach our goal of 95% or above attendance. If your child is in school every day for the week, they will be given a 'Golden Ticket' by their class teacher for the Summer Prize Draw. The more Golden Tickets they receive, the more chances they have to win one of the prizes. Please see page 8.



Lime Grove, Chelmsley Wood, Birmingham B37 7PY

Coleshill Heath Tel: 0121-779-8070

www.chs.solihull.sch.uk

Issue 78 – Page 1

REPORTING BACK

SATs

Well done to all those children who completed their SATs during May. We are incredibly proud of your hard work. You have all been fantastic and have answered every question to the best of your ability.

#CONFIDENCE#COURAGE

Whitemoor Lakes Residential



Year 5 had an amazing time at Whitemoor Lakes at the beginning of this term. They had the opportunity to build rafts, work as a team on the nightline, tackle their fears by climbing high ropes, having a try at the leap of faith and team games. All the children represented Coleshill Heath really well.

#CONFIDENCE#COURAGE

School Sports

A big congratulations to all children who have competed in any school sport this term. Coleshill Heath have been very successful this year and this term we have continued the success and added more trophies to the cabinet.

#CONFIDENCE#COURAGE

4 a Side Girls League



The girls' team have been playing on Tuesdays against other schools in our local area. We finished our league joint top and qualified for the final's day. On finals day the girls won all their matches convincingly and eventually won the final 6-1 to lift the shield and win the 4 a side girls league. Brilliant work girls!

#CONFIDENCE#COURAGE



KS1 Football Competition



Children from KS1 competed in a football competition, they played 4 games where they won 2, drew 1 and lost one. All children showed determination and teamwork. Eventually they came third and won a bronze medal. Well done to all the children.

#CONFIDENCE#COURAGE

KS2 Panathlon

Children from KS2 participated in a Panathlon competition where the children had to compete in several games such as tunnel ball, loopy basketball, noughts and crosses, traffic lights, golf and target hit. After all the events the children finished in second place and won a silver medal and a trophy for coming runners up. Well done all.

#CONFIDENCE#COURAGE



Achievements in and out of School

A big shout-out to our superstars for their achievements: TTRS certificates, swimming certificate, karate black and white belt, football trophy, Blue Peter reading badge and many more...

Well done to all for your amazing commitment and hard work! We love to hear about your achievements in and out of school so be sure to let us know about your awesome accomplishments! #CHSRocks

You can find out about applying for your own Blue Peter book badge by visiting

<https://bbc.co.uk/cbbc/findoutmore/blue-peter-apply-for-a-book-badge>

PARENT INFORMATION

General Election

Unfortunately, due to the General Elections, school will be closed to all pupils on Thursday 4th July 2024. Sorry for any inconvenience this may cause.

Parent Governor Vacancy

Due to unforeseen circumstances Charlotte Davis, one of our parent governors, has had to resign. We would like to thank her for her service to the school during the last 9 months.

We will be writing to you shortly about the vacancy for the role of parent governor on our School Governing Body and invite parents/carers of registered pupils to put their name forward for election.



Street Tag Solihull



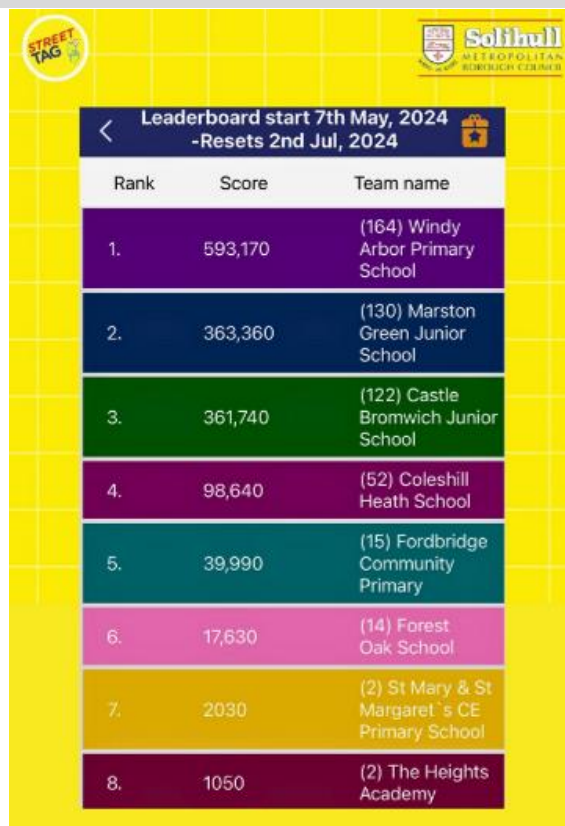
Take part in
Street Tag Solihull

Download on the App Store
GET IT ON Google Play

Download the free App



- Parents/Carers - download the app and sign up with Facebook/Google/E-mail
- Join a School Community, select North Solihull and Coleshill Heath School
- Create a free e-mail ID for your child (Gmail/Outlook)
- Click the settings tab in the App and Add Child using their e-mail address
- Your child can sign in on their device using the details you created



Leaderboard start 7th May, 2024
-Resets 2nd Jul, 2024

Rank	Score	Team name
1.	593,170	(164) Windy Arbor Primary School
2.	363,360	(130) Marston Green Junior School
3.	361,740	(122) Castle Bromwich Junior School
4.	98,640	(52) Coleshill Heath School
5.	39,990	(15) Fordbridge Community Primary
6.	17,630	(14) Forest Oak School
7.	2030	(2) St Mary & St Margaret's CE Primary School
8.	1050	(2) The Heights Academy

The official season has kicked off! ✨ Coleshill Heath are currently 4th in North Solihull so you need to strap on your walking shoes, lace up those running sneakers, hop on your bike, roll on your wheelchair, or glide on your scooter to stay active, earn points, and claim awesome prizes!

The excitement has begun so don't miss out on the adventure and the journey towards better fitness and improved mental health. 🚴🏻🛴

Prizes:

There are prizes up for grabs at the end of the season! See below:

- 🏆 1st Place - £300 to the school PTA
- 🏆 2nd Place - £150 to the school PTA
- 🏆 3rd Place - £75 to the school PTA

Keep moving!

Entry to Year 7 in September 2025 - The Grammar Schools in Birmingham

Registration is now open for parents of current Year 5 pupils who would like their child to sit the entrance test for a place at any of the grammar schools in Birmingham (entry to Year 7 in September 2025). Registration can be made online by visiting the website www.westmidlandsgrammarschools.co.uk

The closing date for registering is 4pm on 28th June 2024.

The test will take place on 14th September 2024.



Lime Grove, Chelmsley Wood, Birmingham B37 7PY

Coleshill Heath Tel: 0121-779-8070

www.chs.solihull.sch.uk

Issue 78 – Page 4

2 Year and 3-4 Year Provisions



COLESHILL HEATH SCHOOL

Creative Caring Collaborative Calm

SPACES AVAILABLE
IN OUR EXCEPTIONAL
EARLY YEARS NURSERY
15 and 30 hour places for
2 and 3 year olds
An experienced, nurturing team of
Early Years practitioners

A bespoke building
created for
2 year olds

Wide range of
natural, open-
ended resources

Large, newly
developed outdoor
classroom

For more information or to apply, contact
Coleshill Heath School or scan the QR code

0121-779-8070 admissions@chs.solihull.sch.uk

Nursery Places Available September 2024

2 Year Provision

Children who are 2 years old before 31st August 2024 may be entitled to a free nursery place for up to 15 hours per week. Please use the following link to check if you are eligible.

<https://www.solihull.gov.uk/children-and-family-support/earlyeducation2yearolds>

Introduction of New Childcare Funding Scheme for Working Families

To apply for this new childcare funding for working families please apply to the National Childcare Service online or call 0300 123 4097.

Nursery 3 and 4 year olds

All children aged 3 to 4 are entitled to 15 hours of early education funding per week the term after their 3rd birthday. If your child is 3 years old before 31st August you can apply for a place to start in September 2024.

Please email on 15admissions@chs.solihull.sch.uk for further information or to apply for a place.

Stay on top of School News by Downloading our School App!



Make sure you stay on top of school news, dates and events by downloading our school app.

<https://www.schudio.com/free-school-app/>

Once downloaded just search for Coleshill Heath School to stay connected. **Please check emails, Dojo and the website regularly for information and up-to-date events.**

National Online Safety

Life online is often as important to our children as life offline and making space to talk about it is really important. Parents and carers can still register for our National Online Safety program to learn more about the apps, sites and technologies that children use every day. Just visit <https://nationalonlinesafety.com/enrol/coleshill-heath-school> to sign up.

#CHSRocks #eSafety



Parent Voice



“Parents are a massive part of their children’s learning journey, we as parents are part of the school community, and children love to see their parents engaging and being part of school”.

Accompany us in our ‘Quest to be the Best’ and join our Parent Voice. We meet roughly once a month on a Friday (9.00am-10.00am) and would welcome you on board.

- Meet other CHS parents/carers
- Share your views on CHS with staff and other parents/carers
- Learn more about how CHS works
- Enjoy a coffee and have fun!

Next meeting: Friday 14th June 2024 usually held in the CHS Community Hub. Further date: 5th July 2024.



Lime Grove, Chelmsley Wood, Birmingham B37 7PY

Coleshill Heath Tel: 0121-779-8070

www.chs.solihull.sch.uk

Issue 78 – Page 5



Important – Parking with consideration

Please be considerate to local residents that live in close proximity to the school when parking and refrain from playing loud music and dropping litter. **Please reduce your speed** in and around the school site. Speed limit to 5mph on school property. **Nothing comes before the safety and well-being of the children and school community.** Thank you

Could your child be eligible for extra funding?

This is for all years (Reception – Year 6). If you have not done so already, we would appreciate you completing the online application to find out if you are eligible. Please go to the link below and complete the online application for Free School Meals / Pupil Premium: www.solihull.gov.uk/fsm

School Meals

Reception, Years 1 and 2 are entitled to the Government's Universal Infant free school meal regardless of a parent's income. Year 3 upwards, as you are aware, are now required to pay for your child's school dinners as they will no longer qualify for the Government's Universal Infant Free School meals programme. Some families may be entitled to continue claiming free school meals depending on family income - if you would like to apply for free school meals, please do so via the Solihull council website at: <http://www.solihull.gov.uk/fsm>. Families that do not qualify will be charged for each school meal their child has; payment is to be made online via ParentPay or at any PayPoint.

Dinners/Trip Payments

Please could we remind you that dinners should be paid for in advance. **Any outstanding debts should be paid as soon as possible.** Any debts move through the school with the child, thank you.

Improving Communication Links with School

To keep your child/ren safe and ensure their well-being, we are constantly looking for ways to improve our links with you and keep everyone up-to-date and well informed. As sending written information home is sometimes unreliable; we are continuing to use Schoolcomms, an electronic school communication system. This will enable you to receive all your information from school quickly and reliably. We can send letters by email to your inbox and short messages directly to your mobile phone as a text message, or if you have an Apple or Android mobile phone, by app message. In addition to Schoolcomms, we also use ParentPay for trips, dinner money etc and Class Dojo for communicating with parents.

URGENT: Keep the office informed of your current mobile number and email address together with other contact information we hold. *If you are not receiving communication by these sources, please contact the school office and they will look into the reason why.* Help us to help you, thank you. Limited information can also be found on our website and noticeboards around school.

Pupil/Privacy Notices

Please be aware that we have updated our privacy notices, which explain how we use and process children's personal data. These can be found on the school website under Key Information and then Fair Processing.

School Website

Please look at our school website for Latest News Events, Upcoming Events, Policies, Class Blogs, Term Dates, Lunch Menu's, Calendar, Contact us enquiries form and more. www.chs.solihull.sch.uk



Correct School Uniform and Jewellery

Please could we remind you to send your child to school with the correct uniform. If your child has pierced ears, only stud earrings are allowed. Lots of children are wearing hooped earrings, necklaces and bracelets which are a health and safety issue at school. Nail varnish should also not be worn. Long hair needs to be tied back. **Don't forget to apply sun cream and bring in hats during the hot weather.** Thank you for your co-operation. A list of uniform and suppliers is given below.

RECEPTION – YEAR 5	
Girls	Boys
White polo shirt (<i>School logo or plain</i>) Navy blue sweatshirt (<i>School logo or plain</i>) Navy blue cardigan (<i>School logo or plain</i>) Black or grey skirt, trousers or pinafore White or grey socks (<i>ankle or knee length</i>) Grey tights (<i>colder months</i>) Blue check gingham dress (<i>warmer months</i>) Black school shoes (<i>no trainers or open toe sandals</i>)	White polo shirt (<i>School logo or plain</i>) Navy blue sweatshirt (<i>School logo or plain</i>) Black or grey trousers Black or grey shorts (<i>warmer months</i>) Black or grey socks Black school shoes (<i>no trainers</i>)
YEAR 6 (<i>Secondary School Ready</i>)	
Girls	Boys
White polo shirt (<i>School logo or plain</i>) Or white blouse and school tie School blazer (<i>with school logo</i>) Navy blue sweatshirt (<i>School logo or plain</i>) Navy blue cardigan (<i>School logo or plain</i>) Black or grey skirt, trousers or pinafore White or grey socks (<i>ankle or knee length</i>) Grey tights (<i>colder months</i>) Blue check gingham dress (<i>warmer months</i>) Black school shoes (<i>no trainers or open toe sandals</i>)	White polo shirt (<i>School logo or plain</i>) Or white shirt and school tie School blazer (<i>with school logo</i>) Navy blue sweatshirt (<i>School logo or plain</i>) Black or grey trousers Black or grey shorts (<i>warmer months</i>) Grey or black socks Black school shoes (<i>no trainers</i>)

The wearing of our School blazer, school tie and a button up white shirt is optional for all year groups

Unwanted Good Quality Uniform



If you have any unwanted good quality uniform, can you please pass this to the class teacher or the school office so we can make it available to other families. This is something the government have asked schools to implement, thank you.
This FREE pre-loved uniform is available at publicised events throughout the year. For further information please speak to the school office

School Uniform Suppliers

Uniform can be purchased through **Brigade or Mansuri Schoolwear**. Please see details below:



Brigade

Order your school uniform online from

Log on to:

www.brigade.uk.com

Enter Coleshill Heath School (delivery to school service) and select the school from the drop-down list provided.



Mansuri Schoolwear

163 Yew Tree Lane

Yardley

Birmingham B26 1AY

Tel: 0121 784 4230

Please telephone before you visit to see if they stock what you require (Jumpers/Cardigans/PE tops, book bags)

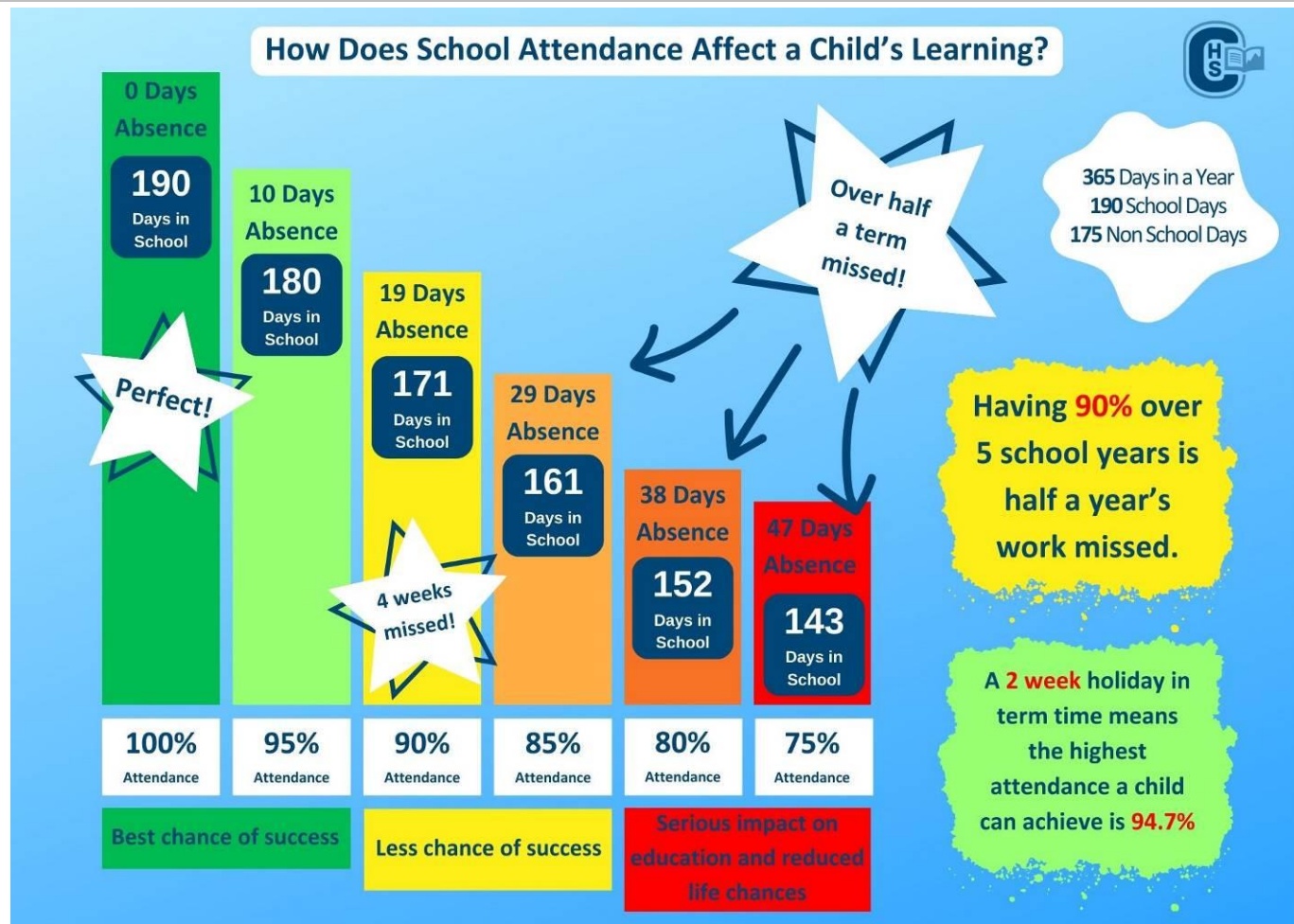
Lime Grove, Chelmsley Wood, Birmingham B37 7PY

Coleshill Heath Tel: 0121-779-8070

www.chs.solihull.sch.uk

Issue 78 – Page 7

Attendance



- **In the line at 10 to 9!** If your child is arriving after 8.55am, they are **late** for school, and will need to report to the school office! (For Nursery and Early Years start and finish times, please consult your class teacher).
- If your child is **absent from school** it is up to you as parents/carers to inform the school office on the 1st day of absence before 9.15am (**0121 779 8070 or email office@chs.solihull.sch.uk**). Please telephone school and leave a message on the absence line, or report via the school website. (Messages sent to teachers regarding pupils' absences do not always get passed on to the office). It is **your** responsibility to provide a reason for your child's absence. If not provided it will be marked as **unauthorised**.
- **Medical appointments** - Pupils are expected to attend school prior to the appointment and return to school after the appointment. Evidence should be shown. Any absence outside of the appointment/travel time will be unauthorised.
- Where possible medical appointments should be booked outside of school hours.



'Going for Gold' attendance mission. During the Summer term, we are aiming for our attendance to reach at least **95%** or above for the whole school. Should we achieve this, there will be a whole school prize to coincide with our Attendance Reward Day on Tuesday 16th July.

If your child is in school every day for the week, they will be given a 'Golden Ticket' by their class teacher for the Summer Prize Draw. The more Golden Tickets they receive, the more chances they have to win one of the prizes.



Lime Grove, Chelmsley Wood, Birmingham B37 7PY
Coleshill Heath Tel: 0121-779-8070

www.chs.solihull.sch.uk

Issue 78 – Page 8

Dates for your Diary: Summer Term (2) – June to July 2024

June 2024	
03.06.2024	Start of Summer Term (2)
	Musician of the Month – Dolly Parton
03.06.2024	Years 3-6 – Times Table Session
03.06.2024	Years 4&6 – Chance to Shine Cricket (sessions begin – 6 weeks)
04.06.2024	Years 5&6 – Netball League at Grace Academy (3.45pm-5.30pm)
06.06.2024	Year 6 – Residential: London (6 th -7 th)
06.06.2024	Years 2&3 – Shooting Stars Festival at John Henry Newman CC (9.30am-11.30am)
07.06.2024	CHS Culture Morning – Euro 2024
w/c 10.06.2024	My Money Week
w/c 10.06.2024	CHS Careers Week
10.06.2024	Year 4 – Residential: Kingswood (10 th -12 th)
10.06.2024	Years 5&6 – Spelling Bee at Fordbridge (3.45pm-5.15pm)
11.06.2024	Year 1 – Black Country Museum
11.06.2024	Year 4 – Fire Service Visit (2.00pm-3.00pm)
11.06.2024	Years 5&6 – Netball League at Grace Academy (3.45pm-5.30pm)
13.06.2024	Years 3&4 – Girls Football at John Henry Newman CC (3.45pm-5.30pm)
14.06.2024	Father's Day Afternoon Workshop
14.06.2024	Parent Voice - CHS Community Hub (9.00am-10.00am) - everybody welcome
w/c 17.06.2024	Whole School – YouSkip – In School
17.06.2024	Whole School - National Schools Sports Week
17.06.2024	Years 3&4 – Spelling Bee at Fordbridge (3.45pm-5.15pm)
17.06.2024	Tennis Tournament – Edgbaston Priory TBC
18.06.2024	World Music Day Assembly – in school
18.06.2024	Years 5&6 – Netball League Finals at Grace Academy (3.45pm-5.30pm)
20.06.2024	Year 2 – Weston Super Mare
20.06.2024	Years 5&6 – Girls Football at John Henry Newman CC (3.45pm-5.30pm)
21.06.2024	INSET Day
24.06.2024	Year 6 – Transition Workshop (9.00am-10.00am, 10.00am-11.00am)
24.06.2024	Year 2 – Spelling Bee at Fordbridge (3.45pm-5.15pm)
25.06.2024	Year 5 – Langley Drama Project Workshop
25.06.2024	New Reception Induction Evening (4.00pm)
27.06.2024	Year 6 – Langley Maths Workshop (pm)
July 2024	
	Musician of the Month – James Brown
01.07.2024	Years 3-6 – Times Table Session
01.07.2024	Year 5 – Langley Drama Project Workshop
03.07.2024	Reading Parent Workshop
04.07.2024	General Election – School closed to all pupils
05.07.2024	Parent Voice – CHS Community Hub (9.00am-10.00am) - everybody welcome
05.07.2024	KS2 - Borough Athletics at Tudor Grange Leisure Centre (10.00am-3.30pm)
06.07.2024	SUMMER FAYRE (SATURDAY 6TH JULY 2024) – EVERYONE WELCOME
w/c 08.07.2024	Sports Week
08.07.2024	Year 5 – Space Centre
08.07.2024	KS1 – Sports Day
08.07.2024	Years 5&6 – Girls Football World Cup at Bodymoor Heath (10.00am-2.30pm)
09.07.2024	EYFS – Sports Day
11.07.2024	CHS Transition Day
11.07.2024	Year 6 – Leavers' Assembly (2.00pm)
12.07.2024	KS2 – Sports Day
w/c 15.07.2024	Reading Festival Week
15.07.2024	Attendance Assembly
15.07.2024	Solihull Parent Carer Voice (9.00am)
15.07.2024	Years 3-6 – Girl Power Party at Arden Hall (1.00pm-4.00pm)





July 2024 - continued		
16.07.2024		Attendance Reward Day
18.07.2024		Year 6 – Leavers' Disco
19.07.2024		Champion Learner and Reading Reward Assembly
19.07.2024		Reading Festival Celebration
19.07.2024		Reports out to Parents
19.07.2024		Break Up for the Summer Holidays
22.07.2024		INSET Day
02.09.2024		Academic Year 2024/2025 – Autumn Term (1) Starts

*Dates correct at time of print (22.05.2024).
Information to follow regarding the above events.*

TERM DATES - Academic School Year 2023/2024

Summer Term 2024

Half Term: Monday 27th May 2024 to Friday 31st May 2024
Term Ends: Monday 22nd July 2024 (INSET Day)

REMINDER OF INSET DAY

Friday 21st June 2024
Monday 22nd July 2024

All holidays should be taken during the 13 weeks that the school is closed

TERM DATES - Academic School Year 2024/2025

Autumn Term 2024

Term Starts: Monday 2nd September 2024
Half Term: Monday 28th October 2024 to Friday 1st November 2024
Term Ends: Friday 20th December 2024

Spring Term 2025

Term Starts: Monday 6th January 2025
Half Term: Monday 17th February 2025 to Friday 21st February 2025
Term Ends: Friday 11th April 2025

Summer Term 2025

Term Starts: Monday 28th April 2025
Half Term: Monday 26th May 2025 to Friday 30th May 2025
Term Ends: Monday 21st July 2025

Bank Holiday (May Day)

Monday 5th May 2025

In addition, please note that schools are required to have 5 INSET/Training days per academic year.

