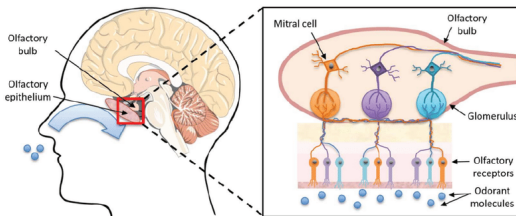


SCIENCE BULLETIN

FEBRUARY 2024

Scientist of the Month: Linda Buck



Who was she?

Linda won the Nobel Prize in Physiology or Medicine in 2004 for her work in the discovery of odorant receptors and the organisation of the olfactory system.

What did she discover?

She worked alongside Richard Axel in 1991 to discover how hundreds of genes in our DNA code for our sense of smell. Our noses contain receptors that change when a scent attaches itself to them, this causes an electrical signal to be sent to the brain. The signals are then combined with other similar signals and interpreted as a specific scent.

Question of the month:

How many grains of rice would it take to equal the volume of an average the human brain?

The average volume of the male human brain is $1,274\text{cm}^3$ and the average volume of the female human brain is $1,131\text{cm}^3$. If we assume the average grain of rice has a volume of 0.082cm^3 then the average male brain would be equal to 15,537 grains of rice and the average female brain would be equal to 13,793 grains of rice!

Random Science Fact:

There are more trees on the planet than stars in the solar system – NASA experts estimate there to be around 400 billion stars in the Milky Way galaxy, the number of trees on Earth is estimated to be more than 3 trillion!

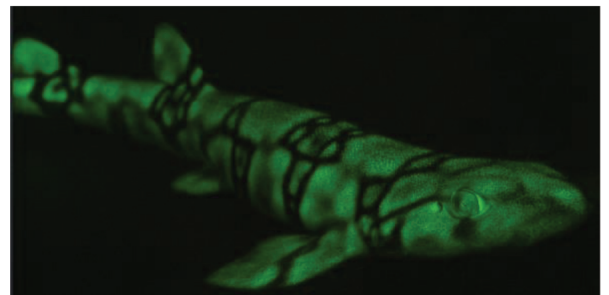


Scientific Talk of the Month:

Ted Talk -

https://www.ted.com/talks/david_gruber_glow_in_the_dark_sharks_and_other_stunning_sea_creatures

Marine Biologist and ocean photographer David Gruber explores the wonderful world of biofluorescence in sea corals and animals including sharks and sea horses!



Question of the month for March:

If bananas are radioactive and therefore can radiate heat, how many bananas would it take to power a house?

WHAT'S GOING ON THIS MONTH?

Monday	Tuesday	Wednesday	Thursday	Friday	Saturday	Sunday
			1	2	3	4
5	6	7	8	9	10	11
12	13 Gravitational-Wave Astronomy IOP virtual talk (link below)	14	15 Science club	16	17 Jodrell Bank Curious Kids starts (link below) In Two Minds - Darwin & Wallace on the road to Natural Selection RSB live event (link below)	18
19 (Half Term Week)	20	21	22	23	24	25 Jodrell Bank Curious Kids ends
26	27 International Polar Bear Day (link below)	28	29 Science club			

USEFUL LINKS FOR UPCOMING EVENTS

Useful Links for Upcoming events:

- [CURIOUS KIDS: The EXPLOSIVE Science Show! - Jodrell Bank](#)
- [International Polar Bear Day | WWF](#)
- [Gravitational-Wave Astronomy: Exploring the dark side of the Universe | Institute of Physics \(iop.org\)](#)
- [Events \(rsb.org.uk\)](#) – Darwin and Wallace Natural Selection talk