



SCHOOL UNIFORM

Introduction

We take pride in the high standard of appearance of CHS students and ask parents/carers to give their full support in maintaining these high standards. Our policy is called “Dress for Success”.

The wearing of a school uniform encourages students to have a sense of pride and belonging as well as reinforcing the high standards established within the local community.

Our school uniform has been designed to be smart, fashionable, affordable and flexible.

Core Purpose

To ensure that uniform reflects the ethos, standards and principles of the school.

Broad Purposes

To facilitate equality and inclusivity for all.

To ensure that the uniform is accessible and affordable for all.

To ensure that all students feel confident and prepared for learning.

That the uniform easily identifies CHS students for both ambassadorial and safety reasons.

That the uniform provides flexibility, comfort and is fit for purpose, without being open to interpretation.

To keep children safe during the busy school day.

Policy Details

In choosing Congleton High School parents/carers are making a commitment to ensure that their child wears the uniform correctly. The list below makes clear all compulsory and optional items and indicates where the items may be purchased. The school provides items directly from the manufacturer ensuring the lowest possible prices. However, the school is able to offer flexible payments to help parents spread the cost. Good quality used items of school uniform, particularly blazers, are often available. Please contact the school office for details.

All items should be clearly labelled with the name of the owner.



CHS Uniform

- Black CHS logo blazer
- Black tailored trousers (*jeans, Lycra® trousers or leggings are not permitted*)
or
- Black CHS logo skirt to be worn within 10cm of mid knee
- White shirt with collar that buttons to the neck
- Black school clip-on tie with CHS logo
- Grey V-neck jumper with purple stripe (*sleeveless or with sleeves*) - *optional*
- Black socks or tights (*no other colour is permitted*)
- Plain black shoes with a heel of not more than 5cm (*boots, trainers, trainer/shoes or casual shoes are not permitted*)

CHS PE Kit

- Purple CHS polo shirt
- 1/4 zip CHS fleece sweatshirt or hooded sweatshirt
- Black CHS shorts or skirt
- Black CHS socks
- Black tracksuit bottoms or CHS leggings
Optional (Years 7 and 8 choosing to wear tracksuit Bottoms or leggings MUST wear the CHS branded items available from DP Sportswear. Years 9 - 11 may continue to wear their unbranded tracksuit bottoms/leggings or the CHS branded options.
- CHS rugby/games shirt - *optional*
- Short white sports socks
- Trainers
- Football boots/Astroturf shoes
- Shin pads
- Gum shield - *recommended*

Blazers, trousers, skirts, ties and the PE Kit are available to buy online from [DP Sportswear](http://www.dpsportswear.co.uk) instore or online at <http://www.dpsportswear.co.uk>. You can find details of DP Sportswear, a price list and a link to the website in the 'Parent Area' of our website at www.congletonhigh.com.

Ties and gum shields can also be purchased from **Student Reception**.



Jewellery

The only jewellery that is allowed is:

- A watch.
- One pair of stud earrings worn in the ear lobe (*the wearing of an earring in any ear or a spacer earring is not permitted*).
- All other forms of piercings are not allowed in school.

Hair and Make-up

- Subtle, unobtrusive make-up is acceptable. False eye lashes are not suitable for school.
- Natural hair colours only, no extreme styles, for example – tramlines, skin head and Mohican styles. Students having long hair must fasten it back in laboratories and practical rooms and for PE. The school reserves the right to make the final decision on whether a hairstyle is deemed to be extreme.

As part of our commitment to be an inclusive school community, we have adopted the Halo Code. Further details can be seen in Appendix A below.

- No nail varnish or acrylic nails.

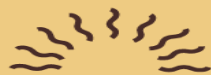
Bags

- Bags must be large enough to carry an A4 folder.

Bicycles

- All cyclists **MUST** wear a safety helmet. In the interests of safety, students travelling in the dark are advised to wear fluorescent armbands or sashes. Bikes must be locked into the bike racks in the Quad area of school.

Appendix A



The Halo Code **For Schools**

Our school champions the right of staff and students to embrace all Afro-hairstyles. We acknowledge that Afro-textured hair is an important part of our Black staff and students' racial, ethnic, cultural, and religious identities, and requires specific styling for hair health and maintenance.

We welcome Afro-textured hair worn in all styles including, but not limited to, afros, locs, twists, braids, cornrows, fades, hair straightened through the application of heat or chemicals, weaves, wigs, headscarves, and wraps.

At this school, we recognise and celebrate our staff and students' identities. We are a community built on an ethos of equality and respect where hair texture and style have no bearing on anyone's ability to succeed.



Appendix B

Congleton High School

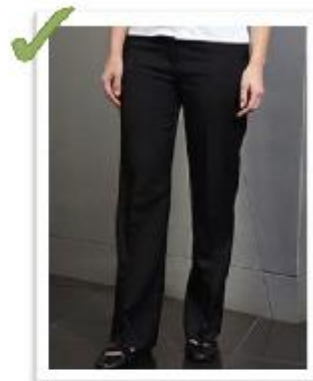
Uniform Guidance



We take pride in the general high standard of appearance of CHS students and ask parents to give their full support in maintaining these high standards. Our policy is called "Dress for Success".

In order to avoid any ambiguity regarding acceptable/unacceptable items of school uniform please use the following guide together with the full uniform list:

The following Skirts/Trousers are acceptable items of school uniform:



The following Skirts/Trousers are **NOT** acceptable items of school uniform:



Any non-CHS logo skirt, or CHS logo skirts that are shorter than 10cm from mid-knee

Jeans or slim leg trousers

Jeans, leggings, jeggings or lycra trousers.

Congleton High School

Uniform Guidance



The following shoes are acceptable items of school uniform:



The following shoes are **NOT** acceptable items of school uniform:



Trainer-style casual shoes

Trainers

Boot-style shoes

Ugg-style boots

Ballet, pump style shoes with coloured bows, jewels or other embellishments.

Slip-on shoes or fabric shoes

Sandals or open toe shoes

All School Uniform will be worn in accordance with the 'Dress for Success' Policy.

In addition to the shoe styles on page 2, we have had recent queries about the following designs and would like to make parents/carers aware that these are also not appropriate as part of the School Uniform policy.



The shoes below are acceptable and are appropriate to be worn at school.





Appendix C



Congleton High School

Achieving Success Together

Congleton High School
Box Lane, Congleton
Cheshire, CW12 4NS
T: 01260 730123
E: enquiries@congletonhigh.com
t: @ CongletonHS
www.congletonhigh.com
Headteacher: Mr J Barlow
BA (Educ) Hons, NPQH

June 2021

Dear Parent/Carer

Re: Lower/Upper School Uniform

When Year 9 students move into Year 10 they have traditionally been able to change from a blazer/skirt with a purple logo to a blazer/skirt with a silver logo. Whilst this has always been an optional change, most students opted to make the change. However, this has in some cases led to unnecessary expense for parents, particularly when an item of uniform still has some 'wear' left.

Therefore, from September 2020, students have been encouraged to continue wearing the purple logo items of uniform and, if they wish, just change to a silver logo tie. DP Sportswear will continue to sell the remaining items of silver uniform to Year 11 students and any Year 10 students who would like to make the change, but only until current stocks run out.

I trust this change will help to alleviate some of the extra cost involved in providing uniform for growing children.

Yours faithfully

Mr J Barlow
Headteacher