

Conway Chronicle

Issue 26

24th April 2026

Leadership Message

This week has been a busy and exciting one across the school. We were delighted to welcome the Book Fair, and it has been wonderful to see so many families taking the opportunity to purchase new books for their children.

Thank you to all the parents and carers who have supported the school in this way. Every book bought through the Book Fair directly benefits our pupils, as it enables us to purchase additional resources to support and enrich the curriculum. For any families who have not yet had the chance to visit, the Book Fair will still be open on Monday and Tuesday next week – we would love to see you there.

We were also treated to a fantastic assembly this week, written and performed by our Year 5 pupils. Their retelling of *St George and the Dragon* was informative, engaging and very well presented. We are extremely proud of the effort and confidence shown by all the children involved.

Attendance across the school continues to be strong, and this year our attendance league has helped to celebrate classes with consistently high attendance, as well as recognising children whose attendance has shown recent improvement. Next week, we will be celebrating the Spring Term winners, 2K and 3R, with a special Lego Workshop. Well done to both classes. The Summer Term attendance league is now underway, and children are excited to take part once again.

Finally, thank you to our families for your continued support. You are a vital part of what makes our school such a positive and successful place for children to learn and grow.



Dates for your Diary

28th April

Height and Weight Checks

29th April

YR to West Midlands Safari Park

4th May

Bank Holiday—school closed

w/c 11th May

Year 6 SATs week

25th May—29th May

Half Term—school closed

1st June—12th June

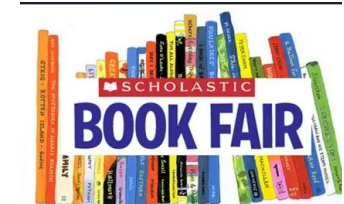
Year 4 Multiplication Tables Check

3rd July

INSET day—school closed

17th July

Last day for children before
summer holidays



The Book Fair will still be open on Monday and Tuesday next week.

Parent guides to school assessments can be found on our school website here - [Assessment information for Parents | Conway Primary School](#)

Safeguarding—School Gates

Entrance moved to Conway Road Gates.



From Monday 13th April 2026, we are moved the school main entrance to the main gates on Conway Road.

This will ensure our children and families are safe, and will improve access to the site for all.

Palmerston Road entrance can still be used, if preferred, during drop off and collection at 8.45am and 3.10pm, but will be locked throughout the day.

If you are visiting school during the day, please use the Conway Road entrance gates.

Star Pupils of the Week

HIVE

Awais

EYFS

Ebrahima, Ahmed

Year 1

Mohammad Ali, Livian

Year 2

Hamdi, Hammad

Year 3

Amina, Mehar

Year 4

Abdullahi, Duaa

Year 5

Aisha, Zaakir

Year 6

Alesha Marshad, Ahmad



Marvellous Mathematicians

Year 1

Sohail, Fatmah

Year 2

Liyanah, Aima

Year 3

Abdirahman, Aizah

Year 4

Abubaker, Adnan

Year 5

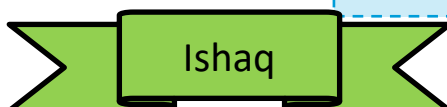
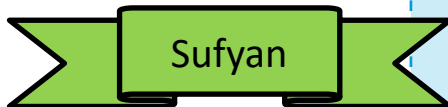
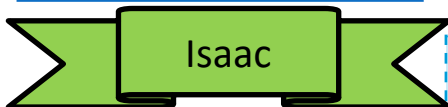
Issa, Zakariya

Year 6

Abdullah, Hijab

Congratulations to these children with whom we celebrate recently improved attendance.

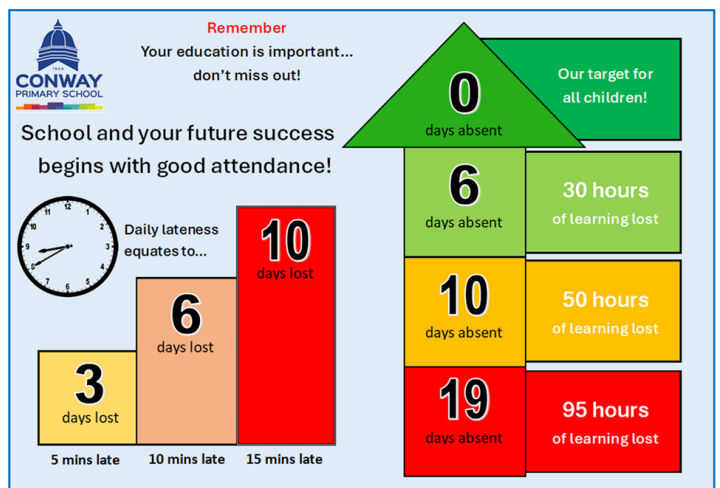
Keep it up!



School Attendance this week:

1.5

days lost per class



Next Week's Celebration Assembly: **Friday, 8:50-9:30am**

Invited parents/carers will be notified before the assembly.