



Be our best selves

COUGHTON

C of E Primary School

Issue 05

Key dates



Dear Families,

It has been another incredibly busy few weeks. We enjoyed a wonderful visit from The Bishop of Coventry, Sophie Jelley. She commented on how hard the children were working and how calm the learning environment was.

Next week we have our I SING pop concerts. The rehearsals for this have been incredible this week and the concerts will be a great spectacle. Further correspondence has been sent via Studybugs as to how to access the car park.

As always, the run up to Christmas at Coughton is jam packed full. Next week things start with the Christmas room on Wednesday and a pantomime on Friday. See the dates and attached PTA newsletter for further information.

Please could we ask that at the beginning and end of the school day that children are not swinging, hanging or going behind the school gate at the bottom of the footpath. We have had to have the gate post reset due to damage caused.

Head of School
Mr Alex Kolb

Team points:

Alne: 289
Avon: 328
Arrow: 404

Coughton CE Primary School
Coughton Lane
Coughton
B49 5HN
01789 762444



Coughton CE Primary School

Monday 1 st December	I SING POP concerts at St Peter's Church
Tuesday 2 nd December	Ash school trip
Friday 5 th December	School Pantomime
Tuesday 9 th December	Year 6 trip to Coventry Museums
Wednesday 10 th December at 2.00pm	Reception & KS1 Nativity
Thursday 11 th December at 9.30am	Reception & KS1 Nativity
Friday 12 th December	A Coughton Courtyard Christmas- 3.30-.5.30pm Coughton Court
Wednesday 17 th December at 9.30am	KS2 Carol Service at St Peter's Church Coughton
Friday 19 th December	School Closes for Christmas Holidays
Monday 22 nd December – Friday 2 nd January	Christmas Holidays
Monday 5 th January	INSET Day school closed for pupils
Tuesday 6 th January	School reopens to pupils
Wednesday 28 th and Thursday 29 th Jan	Parents Evening (in person)
Monday 16 th February to Friday 20 th February	Half term



On 1st December 2025, there will be 3 concerts at St Peter's Church, Coughton, where we can join together as a community to celebrate the children's achievements. Due to limited space in the church, we will be offering 3 services which will be split into Key Stage phases.

These will run as follows:

- Concert 1 will begin at 10am for EYFS, year 1 and year 2. **Code: k9bmv**
- Concert 2 will begin at 12pm for year 3 and year 4. **Code: dmbak**
- Concert 3 will begin at 2pm for year 5 and year 6. **Code: 6tp3d**

<https://www.isingpop.org/>

Parking

Arrangements have been made for access and parking for iSingPop on Monday 1st December at St Peter's Church. We understand that the roadworks have been suspended for the day. All traffic should go down Coughton Fields Lane and make use of the traffic control to access the Court - this will control all traffic flow, in and out. Please drive across the front and park in the Court Visitors Car Park only. There is strictly no parking on the grass.

What to wear

Please ensure that all children have a warm coat and wellingtons

Children can wear a Christmas jumper but this is entirely optional.

All KS2 children should bring a packed lunch.

Bishop Sophie

It was a pleasure to welcome The Bishop of Coventry to Coughton. She spoke to the children about the importance of Collective Worship and how everyone is special and unique.



Acer Church Visit



Important updates for Parents and Carers

Uniform

A reminder to name all clothing brought to school so that it can be easily returned to its owner. We are reminding children and allowing time at the end of the day for them to collect all of their things.

The PTA are selling items for £1 each or online via <https://coughton-school-pta.sumupstore.com/>

Holiday / Leave of Absence Requests

All holiday requests will be unauthorised unless the circumstances are deemed exceptional by the Head of School. Should you wish to request leave of absence for your child(ren) please collect a form from the office.

Term dates can be found here:

<https://www.coughtonschool.org/term-dates/>

INSET DAYS

25/26- School,Closed For Children

INSET DAYS 25/26

Monday 1st September 2025

Friday 24th October 2025

Monday 5th January 2026

Monday 1st June 2026

Monday 20th July 2026

Wraparound

We have a digital wraparound booking system. For details and to book a place please follow the link:

<https://coughton.childcare-online-booking.co.uk/>

Breakfast club from 7.30am, after school club until 6pm (Fridays until 5.30pm).



FESTIVE EVENTS CALENDAR

THURS CHRISTMAS WREATH WORKSHOP
20TH NOV **7PM - SCHOOL HALL**

WEDS THE CHRISTMAS ROOM
3RD DEC **DURING SCHOOL DAY**

FRI CHRISTMAS PANTO
5TH DEC **DURING SCHOOL DAY**

THURS KS2 CHRISTMAS DISCO
11TH DEC **6.30PM - 8PM, SCHOOL HALL**

FRI KS1 CHRISTMAS PARTY
12TH DEC **DURING SCHOOL DAY**

FRI A COUGHTON COURTYARD CHRISTMAS
12TH DEC **3.30-5.30PM, COUGHTON COURT**

WEDS CHRISTMAS LUNCH
17TH DEC **DURING SCHOOL DAY**

SILLY FRIDAYS:

FRI 21ST NOV: SILLY HAIR DAY / DONATE A JARBOLA
FRI 28TH NOV: FESTIVE HEAD WEAR / DONATE A BOTTLE
FRI 5TH DEC: FESTIVE JUMPERS / DONATE CHOCOLATE



Applications open for Primary School places

Applying for a primary school place



The applications process opens on 1 November 2025 and the deadline for applying for a Reception or Junior place is **15 January 2026**. If you apply by this date, you will receive your child's school offer on National Offer Day (16 April 2026).


<https://www.warwickshire.gov.uk/primaryplace>

KS2 Art competition

We would like you to show what Christmas means to you. You can draw, paint, collage your design on paper no larger than A4.

The winning entry will feature on our information and service booklets for the KS2 Christmas service.

Please give any entries to Mrs Moss (Year 5) by Monday 1st December



NATURE PHOTOGRAPHY COMPETITION
FOR UNDER 18s



Calling all nature lovers, photographers and curious explorers!


Join our Nature Photography Challenge to discover, record and celebrate Alcester's amazing wildlife and habitats.

This could be wildlife, plants, trees, insects or landscapes from around Alcester

OPEN FROM SEPTEMBER 2025 TO AUGUST 2026

Submit your best photos and the winners will feature in the 2027 Alcester in the Wild Calendar.




info@alcester-tc.gov.uk

SEND Help!
@ The Gap Community Centre, 10:00-12:00

Once a month on the following dates in 2025:
10th December.

An adult led SEND support group for parent's/carers, whose child(ren) may or may not have a diagnosis.

Facilitated by Family Support Workers.

A chance to meet people who may be going through the same things as you.

Signposting to helpful services & professionals.

Have open and honest conversations, in a safe space.

Please contact Family Support Worker, Sylvia Mckenzie at sylviamckenzie@warwickshire.gov.uk for more info/to book.




Onside Coaching
Monday 22nd and Tuesday 23rd December

Christmas Activity Camp!
Fun & flexible holiday childcare for ages 5-12

At **St Benedicts High School**

£22 per day

HAF
Spaces available for all eligible families

COURSE TIMES
9.30am to 3.30pm
Early Drop off available from 8:30 +£3 each

WE ACCEPT CHILDCARE VOUCHERS & TAX-FREE CHILDCARE

To book now visit onsidecoaching.co.uk



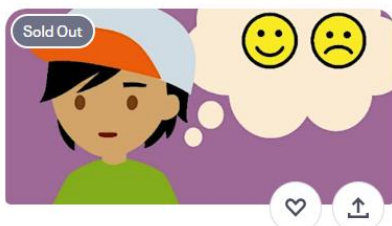


Warwickshire Libraries - What's On Guide

The Autumn/Winter edition of the What's On Guide, showcases the wide range of activities available at Warwickshire Libraries until the end of March 2026.

Libraries offer much more than books! From author talks and creative workshops, to family events and digital learning, there's something for everyone.

<https://library.warwickshire.gov.uk/-/warwickshire-libraries-what-s-on-guide-october-2025-march-2026>



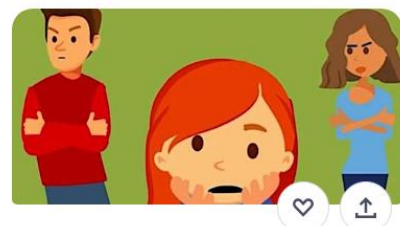
Understanding your teenager Workshop (virtual)

Thu, 27 Nov, 10:00 GMT
Free



Sleep Workshop (Virtual)

Fri, 28 Nov, 09:30 GMT
Free



Parenting Together Workshop (virtual)

Mon, 1 Dec, 17:30 GMT
Free

<https://www.eventbrite.co.uk/o/warwickshire-parenting-support-71623337213>



Money Advice Market

Feeling the pinch of rising costs? You're not alone – and help is at hand!

Join us at the Money Advice Market for practical tips and support to help ease the cost-of-living pressures. From debt advice and energy-saving ideas to housing support and family help, there's something for everyone:

- Expert advice
- Free resources
- Lots of money-saving freebies
- And free refreshments

Location: Rugby Library, Little Elborow St, Rugby CV21 3BZ

Date and time: Friday 14 November 9:30 am – 12:30 pm



Community Autism Support Service (CASS)

<https://www.eventbrite.com/o/community-autism-support-service-cass-62721567983>



<https://www.facebook.com/WarwickshireFIS/posts/pfbid02fRUtiJyLMutQ7AFnP77M3eccABsG3Vrz5JuQYb21ugseNvFK573NuFzMqpyHZjMil>



Mental Health in Schools Team (MHST) workshops

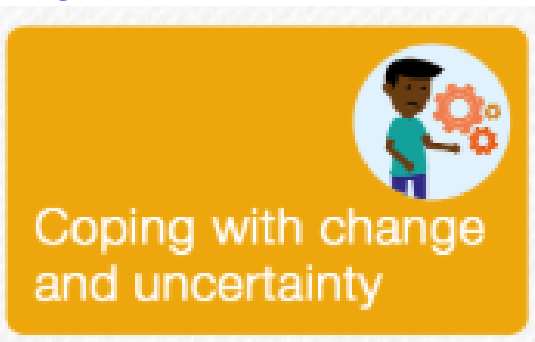
<https://www.facebook.com/WarwickshireFIS/posts/pfbid0GTzZ2c9F7M4JTUK1Uv5pSaUhjwtxWdsqv1rpgH9bvW17D7nNfE2orsM1TwBf8CvI>



<https://cwrise.com/coping-with-anxiety>



<https://cwrise.com/emotional-regulation>



<https://cwrise.com/coping-with-change-and-uncertainty>



<https://searchout.warwickshire.gov.uk/holiday-s-activities-food-haf>

Winter HAF (holiday activities and food) programme listings are live

HAF activities for the winter provision are now live here: www.warwickshire.gov.uk/haf

Activities begin from 20 December – book now as places fill up fast!

You can find each provider's preferred method of booking under their details. Remember to have your HAF code at the ready.

The HAF programme supports families who are in receipt of benefits-related free school meals. If you are receiving these, but haven't yet got a HAF code, it's not too late – you can apply for a code today on the website.



Support for men to prioritise their mental health and wellbeing

To mark International Men's Day and Men's Mental Health Awareness Month, Coventry and Warwickshire Integrated Care System (ICS) is encouraging men to reflect on their mental health and wellbeing.

Mental health and wellbeing is a subject that many men avoid talking about. Whether that's due to stigma, societal expectations or a lack of understanding of what support is available, the result is far too many men suffering in silence.

<https://www.warwickshire.gov.uk/news/article/7211/coventry-and-warwickshire-ics-encourage-men-to-prioritise-their-mental-health-and-wellbeing>



Supporting young people's mental health

Understanding and looking after mental wellbeing is just as important as taking care of physical health and it is a good habit to develop as early as possible.

For young people navigating school, exams, friendships, and future choices it's particularly important to give them tools to manage their worries, build confidence and make decisions that set them up for success.

Good mental health and wellbeing improves the ability to learn and engage to help pupils achieve and thrive in education ultimately setting them up for life and work.

<https://www.warwickshire.gov.uk/news/article/6236/supporting-young-people-s-mental-health>

<https://www.wellbeing4life.co.uk/5-ways-wellbeing>

5 ways to wellbeing.

<https://youtu.be/kC4Dg4louVM>

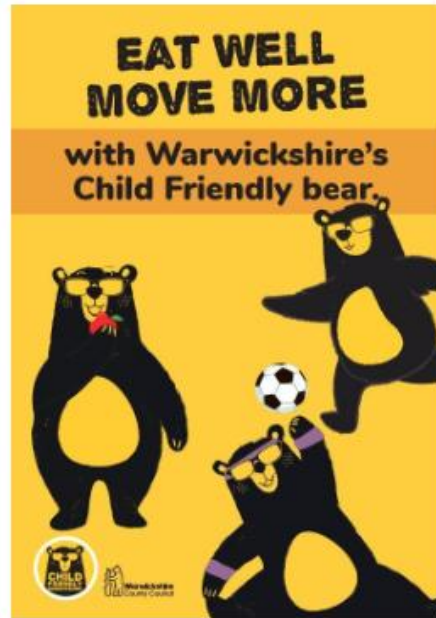


Supporting every child to be in school and involved in education

Regular school attendance and access to education is so important for a child's development, wellbeing and future success.

Consistent attendance and engagement with educational activity not only has a positive impact on academic achievement, as a [recent report](#) has shown, but it is also crucial for a child's social development and overall emotional wellbeing. Being in school or education allows children to learn, reach their full potential, build friendships, participate in extracurricular activities, and access emotional support.

<https://www.warwickshire.gov.uk/news/article/6184/supporting-every-child-to-be-in-school-and-involved-in-education>



Eat Well, Move More with our Warwickshire Child Friendly Bear

To start the conversation with your children in a fun and engaging way, we've created a new activity book under the Eat Well, Move More campaign. The booklet is packed with fun activities such as colouring pages, find the differences, help the bear eat healthy, and more to make it easier to talk about healthy eating choices and being active. We hope these activities will encourage healthier food choices and more physical activity.

Workbook link:

<https://api.warwickshire.gov.uk/documents/WCCC-1980322935-3142>

Move more

A healthy lifestyle also involves plenty of physical activity. Children should ideally be active for at least 60 minutes a day, with 30 minutes taking place outside of school. This can be broken into short 10-minute bursts—they could try scootering to school, skipping to the shops, or dancing to a song!

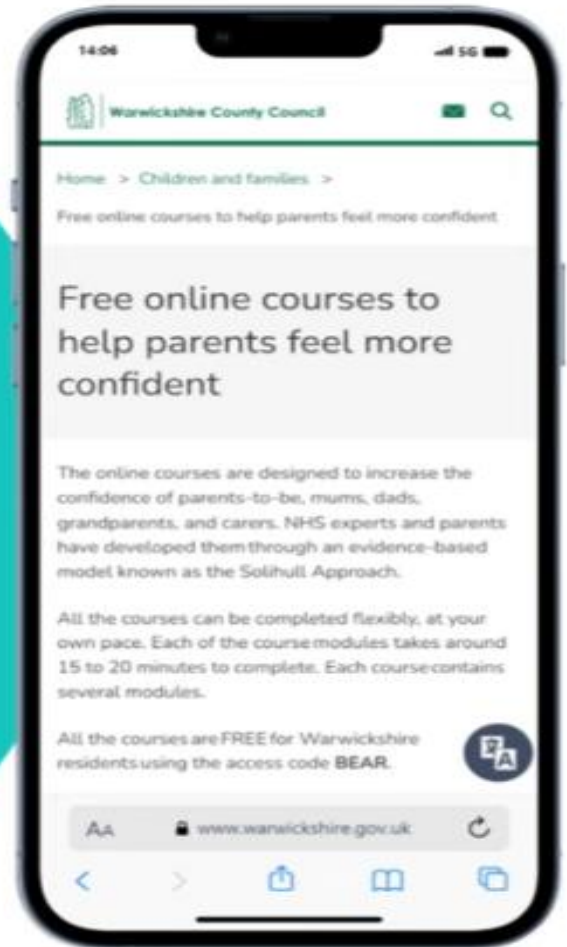
There are lots of ways to encourage children to be more active. Make exercise fun by turning activities into games like tag, hide-and-seek, or dancing. Walk or bike to school if possible or visit a local park for a family walk. Warwickshire also offers a range of after-school sports clubs where young people can stay fit while developing socially.

<https://www.warwickshire.gov.uk/homepage/462/get-active>



An online course to help you Understanding your child with additional needs

visit
[warwickshire.gov.uk/parentguides](https://www.warwickshire.gov.uk/parentguides)
to get started for free



Free

**'Understanding your child with additional needs'
course is for parents and carers of children who
may be neurodiverse, or have a physical or
learning disability**

Whatever their developmental age, these ideas and techniques may help you better understand your child and how to help process or manage their emotions.

Use the code **BEAR** to get free access.

<https://www.warwickshire.gov.uk/parentguides>

Protective Behaviours

– what's that?



Protective Behaviours (PBs) is an internal process where each person applies the ideas to their own unique experience. This paper looks at what Protective Behaviours is and some of its uses. It is intended as an information paper with the hope the reader will see its relevance to their specific interests and will then attend training.

The PBs process is presented here as separate sections. In practice, all interact and support each other - to take one section out leaves the others incomplete.

Unwritten rules of society

We see how certain rules of society have a powerful influence on our choices of behaviour. Whilst these rules can be positive and help guide our interactions, many of them tell us we should, ought, or must behave in a particular way. For instance, children should do as adults tell them; professionals should always have the answer; men should not show their feelings and women should behave in a ladylike manner. These rules are not written down, are often contradictory and may not fit with our own experience. During training we look at their function, how they develop, their effects and why we may choose to follow them or not.

Feelings, Thoughts and Behaviours

During this session we look at the interaction between our feelings, thoughts and behaviour. We see that feelings are feelings, neither right nor wrong, good nor bad, positive nor negative. Some people seem to mask one feeling with another or use behaviour as a way of avoiding or covering feelings. We look at how behaviour is a choice with an effect. These effects may involve others as well as ourselves. Sometimes we do not know what our choices are or they may be limited by factors we cannot change. Once we are in touch with our feelings it helps free us to use our thinking. Our thinking can influence both our feelings and behaviour.

Theme 1 'We all have the right to feel safe all the time'

We explore this theme in detail, carefully looking at the connection between rights and responsibilities. We also take the concepts of blame and punishment out of commonly held ideas associated with responsibilities. Instead we focus on the 'ability to respond' contained within the meaning of the word. The difference between having a responsibility for ourselves and to others is also examined. Next we discover for ourselves the difference between feeling safe, fun to feel scared (adventurous), risking on purpose (which may not feel like fun but we want the goal at the end) and feeling unsafe. These differences are recognised by what we call our 'Early Warning Signs' (EWS), the specific bodily responses which tell us when we do not feel safe. These universal body signs mean Protective Behaviours is accessible to all people, irrespective of age, gender, sexuality, nationality, ability or belief system.

Theme 2 'We can talk with someone about anything, even if feels awful or small'

This theme is also explored in detail. In particular we focus on the ideas and effects of 'talking', and what might happen if we do not believe this theme. We encourage everyone to develop their personal networks of support; those people they could turn to if in need. Desired qualities of network people are identified and we examine how we would know if someone has these qualities. Types of networks and ways of letting people know we need to talk with them are also explored.

LEAVE OF ABSENCE DURING TERM TIME UPDATED INFORMATION FOR PARENTS

The Supreme Court has clarified the law on unauthorised leave, including holidays, during term time (Platt v Isle of Wright 2017). The Supreme Court has made clear that attending school 'regularly' means that the children must attend school on every day that they are required to do so. As such, the parents of any child who is absent from school without authorisation for any length of time are likely to be considered as committing an offence under s444 of the Education Act 1996.

The law states a leave of absence may only be granted by a school if an application is made in advance and if it considers there are exceptional circumstances relating to the application.

Schools must judge each application individually considering the specific facts and circumstances and relevant background context behind each request.

A leave of absence is granted entirely at the school's discretion. Generally, a need or desire for a holiday or other absence for the purpose of leisure and recreation would not constitute an exceptional circumstance.

Where a leave of absence is granted, the school will determine the number of days a pupil can be absent from school.

When making an application for Leave of Absence parents are advised to give sufficient information and time to allow the

Head teacher the opportunity to consider all the exceptional circumstances and to notify parents of their decision. The school may also request further information on the application and supporting documentation where appropriate.

It is advised that if the resident parent has not received notification or a response regarding the leave of absence application, it is the parents' responsibility to ascertain if the leave is authorised prior to the start of the leave.

The school can only consider Leave of Absence requests which are made by the 'resident' parent ie the parent with whom the child normally resides.

Where applications for leave of absence are made in advance and refused, the child is expected to be in school on the dates set out in the application. If the child is absent during that period, it will be recorded as an unauthorised absence. Where a leave of absence is requested, but additional days taken either prior to or after the request may be considered as part of the leave of absence.

Leave of Absences which are not made in advance cannot be authorised in line with legislation. This will result in the absence being recorded as 'unauthorised'.

All matters of unauthorised absence relating to a Leave of Absence will be referred to the Warwickshire Attendance Service, part of Warwickshire County Council. Penalty Notices are issued in accordance with Warwickshire County Council's Code of Conduct for Penalty Notices and in the first instance, as an alternative to prosecution proceedings.

Leave of Absence taken in the academic year 2024-25

The law relating to Penalty Notices changed with effect from 19 August 2024. Therefore, Penalty Notices issued for Leave of Absence taken from September 2024 will be issued in accordance with the updated legislation.

Penalty Notices are issued to each parent of each absent child, (for example 2 children and 2 parents, means each parent will receive 2 invoices – 4 in total).

- First Leave of Absence offence: The Penalty Notice amount of £160 to be paid within 28 days, this is reduced to £80 each child if paid within 21 days.
- Second Leave of Absence offence within a 3 year period (from the date of issue of the first penalty notice): The amount of £160 paid within 28 days. No reduced amount.

Payment plans will not be offered and/or payments received outside of the 28 day period will not be accepted. Where a penalty notice expires unpaid the matter will be referred to Warwickshire County Council's Legal Services to consider criminal prosecution.

- Third Leave of Absence offence within a 3 year period (from the date of issue of the first penalty notice): A penalty notices will be not be issued and the matter will be referred to Warwickshire County Council's Legal Services to consider instigating criminal prosecution proceedings under S444 of Education Act 1996.
 - **Your child's progress academically as well as socially is our shared priority.**

2025/2026 Leave of absence

Leave of Absence taken in the academic year 2024-25

The law relating to Penalty Notices is due to change with effect from 1 September 2024. Therefore Penalty Notices issued for Leave of Absences taken after this date will be issued in accordance with the updated legislation.

- Penalty Notices are issued to each parent of each absent child, (for example 2 children and 2 parents, means each parent will receive 2 invoices – 4 in total).
 - First Leave of Absence offence: The Penalty Notice amount of £160 to be paid within 28 days, this is reduced to £80 each child if paid within 21 days.
 - Second Leave of Absence offence within a 3 year period (from the date of issue of the first penalty notice): The amount of £160 paid within 28 days. No reduced amount,
- Payment plans will not be offered and/or payments received outside of the 28 day period will not be accepted. Where a penalty notice expires unpaid the matter will be referred to Warwickshire County Council's Legal Services to consider criminal prosecution.
- Third Leave of Absence offence within a 3 year period (from the date of issue of the first penalty notice) A penalty notices will be not be issued and the matter will be referred to Warwickshire County Council's Legal Services to consider instigating criminal prosecution proceedings under S444 of Education Act 1996.

Your child's progress academically as well as socially is our shared priority.

Warwickshire Attendance Service