



Elm Class

Mrs Cooke and Miss Chester

Learning Environment

Elm Class consists of 23 lovely children who are taught by Mrs Cooke and Miss Chester (our teaching assistant).

Mrs Byrne teaches us RE on (Monday PM) and Mrs Barry teaches us Handwriting, SPAG, Maths, PSHE and Science on (Thursday) to cover Mrs Cooke's PPA/ SENCo leadership time.

In Year 2, we make learning exciting, active and fun. We follow a structured lesson approach to learning to prepare us for the transition to the Juniors. However, we still recognise the importance of play based learning. Therefore we also have continuous provision areas within the classroom. Each week, the children have 6 challenges to complete within their "busy" time (Phonics, Maths, Writing, Creative, Fine Motor and Construction. This is often within a lesson and sometimes when they have finished their work.

In the Autumn term, particularly in afternoons, Theme lessons run over 2 days. All children take part in the input and then some groups complete their work whilst other groups have busy time and then we switch the following day. As the year progresses and as we prepare for year 3, continuous provision decreases.

Helping Hands

Anyone who knows a teacher will know we are avid collectors! We continually collect things that we know will come in useful for an activity to do with the children or resources which the children will love in continuous provision. We are always in need of the following things and we would be ever so grateful if you could help us in any way throughout the year. 😊

- Specialist visitors who can help us learn more about our topics
- Natural materials (conkers, acorns, pine cones)
- Wooden pallets, tyres, crates, cable reels (preferably treated wood)
- Recycling materials (useful boxes, cardboard, plastic bottles, tubs, fabrics, egg boxes, yoghurt pots, jars etc for junk modelling)
- Small world figures (animals, play people, vehicles)
- Construction (old lego, meccano, k-nex or polydron)



Curriculum Overview

The curriculum overview is a resource for you to see what your child will be learning this term. These can be found on the website.

The overviews cover the skills and objectives that must be taught. These skills are then differentiated according to the children's abilities. Children are taught to their ability, not their year group to ensure that all children make progress.



Our Timetable

We will have PE on a Tuesday with Mrs
Cooke.

Please can all full PE kits (indoor and
outdoor) be in on these days.

Please can you ensure all PE kits are named
and labelled 😊

	9.45-9:00	9:00-9:45		9:45-10:45	10:45-11:00	11:00-12:00	12.00-1.00	1.00-3.00	
Mon	ASSEMBLY FIX IT TIME	PHONICS	B	MATHS	B	ENGLISH	L	TRICKY WORD TIME	THEME (History/ Geography)
Tues	ASSEMBLY FIX IT TIME	PHONICS	U	MATHS	R	ENGLISH	U	FAST 5 ARITHMETIC	THEME (DT)
Wed	ASSEMBLY FIX IT TIME	MATHS (ARITHMETIC)	S	ENGLISH GUIDED READING	E	PSHE <input type="text"/>	N	PE <input type="text"/>	RE <input type="text"/>
Thurs	FIX IT TIME	PHONICS	Y	MATHS	A	ENGLISH	C	HAND WRITING	SCIENCE
Fri	ASSEMBLY	PHONICS	!	MATHS	K	ENGLISH	H	HOMEWORK & SPELLING	SCIENCE



School Planner

The school planners are a communication tool between home and school.

Staff will record messages in the planner on the “school” side. You are welcomed to write and record any reading and comments on the “home” side. These will be checked regularly.

Children should aim to be reading at home for at least 5 minutes every night.

Please remember to record when the children have finished their reading book



Reading

Children are encouraged to read as much as possible, in school and at home. Try to read with your child for **5 minutes every night**- it makes a huge difference!

Children take part in Guided Reading (1x weekly) with the Class Teacher or Teaching Assistant.

Reading Books

We will now be changing the children's reading books on a **Monday** and **Thursday**. The children are encouraged to bring planners and reading books in every day.

Moving book band levels- this is matched to the children's confidence in previously taught phonics and spelling rules. These are reviewed regularly.

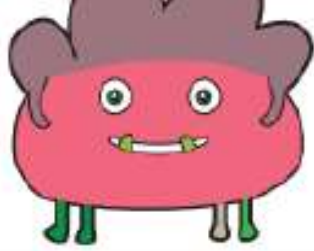


Phonics

The children will have daily phonics/ spelling lesson. In the Autumn term, we will be revising Phase 5 with a particular focus on spelling and selecting the correct grapheme as well as revising blending to read words containing phase 5. Once the children are confident, we will begin Year 2 spelling rules for the rest of the year. This is to ensure the children are fully secure before any new learning.

Any children that didn't pass their phonics screening will be tested again on reading 40 real and nonsense words from phase 5) in **June 2024**.

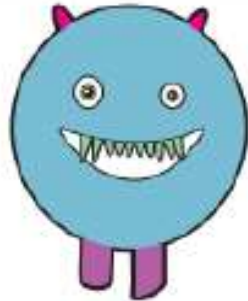
glips



floost



splam



strobe



stair

haunt

lied

wove

This tests transferable and independent reading skills and equips the children with strategies to decode unfamiliar words and overcome barriers to learning.



Spelling Homework

Is given out on a Friday and handed in on the following Wednesday and follows a cycle linked to coverage in school.

Week 1: Investigation of the spelling rule (paper based activity)

Week 2: Spelling words ready to learn for their spelling test the following Friday. The paper version of the sheet can be completed in their spelling books or alternatively, the children can access their Spelling shed (Ed shed QR code in the back of their planner) to play interactive games on a computer tablet or phone to revise the words for their spelling test.

Spelling shed will be checked weekly.

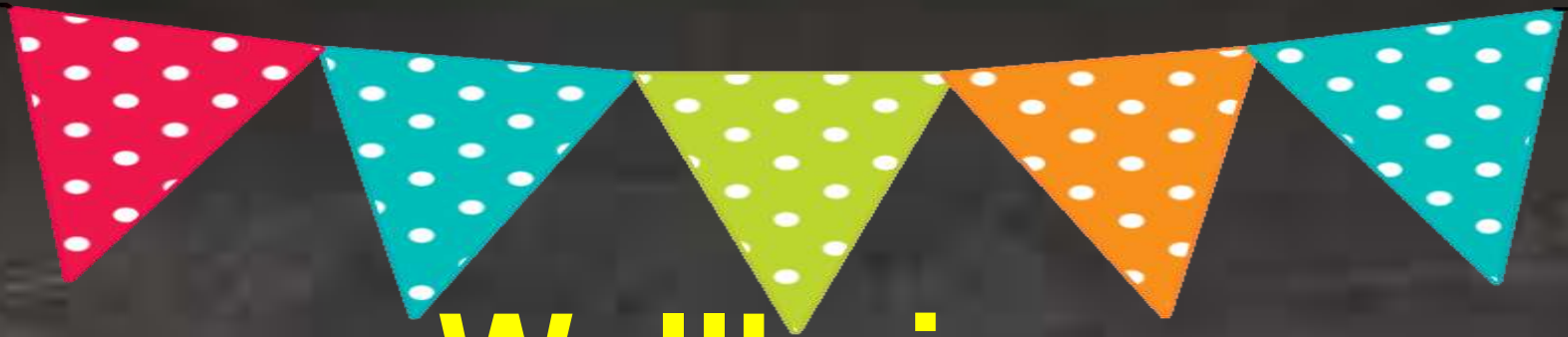


Homework

The “pick and mix” has a mix of activities to choose from. This grid is given at the start of each half term. Homework is due in every Wednesday so that it can be marked and handed back to take home on Friday. The children will be encouraged to hand this in on time but please remind them- as will we. 😊

The children complete this in their book. However if it was a presentation or video that needed to be emailed, this could be sent to:

enquiries@coupegreen.lancs.sch.uk



Wellbeing

In Elm Class, we are lucky to have such nurturing staff who the children know they can come to if they are worried, sad or upset in any way. We have a calm corner for those who may need additional space to have a break, talk to a grown up or to regulate their emotions using the mindfulness resources if they feel they need it.

If you are ever concerned about your child in school or at home, please talk to a staff member who will be there to listen, offer guidance or support. Staff can then ensure we keep an eye on the children and have regular check- ins to ensure all the children are safe and happy as can be.

Throughout the course of the day, we have dedicated mindfulness breaks- this can be colouring, yoga, singing, dancing or even meditation. The children recognise the importance of mindfulness and the impact it can have on their day.



Meetings

Every class teacher has an open door policy which means parents can pass on messages or speak to staff at the beginning and end of each school day. If the discussion may take longer than 5 minutes, a teacher will be more than happy to arrange an appointment after school. This ensures that dedicated time can be given to parents and ensures routines can continue for the children in class.

Each year, we have an initial meeting at the start of the academic year which is a chance to meet the teacher and ask any questions. In the Autumn and Spring term, there will be a formal parent's evening where you can find out about your 5 children's achievements and progress. This is followed by an end of year written report in the Summer term.

If your child has an SEND support plan, you will have more regular meetings to review progress against their SMART targets and discuss the impact of interventions.



Awards

Each Friday, we have a Good News assembly where each class chooses 2 children for the Good News certificate. They get a special sticker and celebration in assembly. We also choose a reader of the week.

In this assembly, any extra- curricular or out of school achievements or awards (medals, certificates, rosettes, badges or trophies) can be shared in this assembly too.

Each half term, parents will be invited to an assembly if their child has been chosen for the special “Golden Merit” award. In this assembly, the children are presented with special badges which they can wear with pride. We also choose a reader of the half term who is then awarded a special “bookworm” badge.

Catch up Learning

We regularly assess children's progress throughout the academic year at 10, 20 and 30 weeks.

We have regular pupil progress meetings with SLT and those identified as falling behind Age Related Expectation or those not having made enough progress will then be placed in intervention groups.

Some of these can be SEND children with SMART targets.

Intervention groups can also be groups of pupils who may need an additional boost in a specific skill or subject. If your child is having any interventions, a teacher will let you know their targets.



SATs

In May 2024, although now non- statutory, the children will have their SATs tests. These occur in Year 2 (at the end of KS1) and in Year 6 (at the end of KS2).

SATs are important but our main focus in Year 2 is that the children are happy, healthy, safe, enjoying learning and making good progress. We ensure there is no pressure placed on SATs for Year 2 and we build up to preparing for these in a balanced, fun and practical way in our usual lessons. Throughout every school year at week 10, 20 and 30, children complete “quizzes” (tests) which support Teacher Assessment. Therefore special “quizzes” (SATs) are nothing unusual in Year 2 and Year 6.

There will be a SATs meeting later on in the year where you can find out more about these. Please do not worry about them.



Handwriting

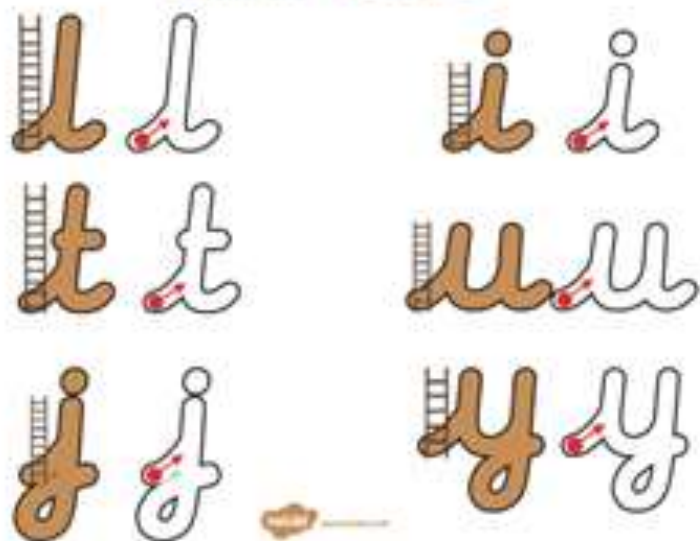
Handwriting is taught / modelled daily in English/ phonics with one discrete teach a week and regular opportunities to practise.

Learn to form letter families first, then vowel digraphs as we learn them. We follow a cursive progression using a scheme called “Letter Join”.

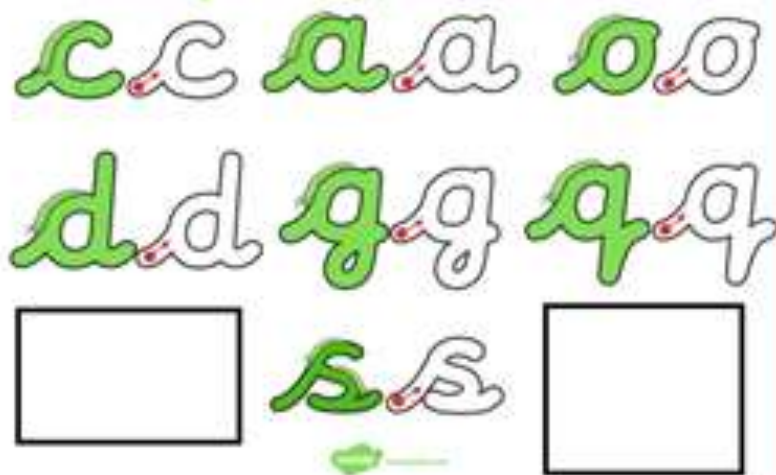
It is very important that children develop a strong tripod grip when writing to form letters accurately.

Support at home: Practice writing and mark making as much as possible, writing shopping lists, labels, diaries etc. Encourage children to pinch the pencil firmly.

Ladder Letters



Curly Caterpillar Letters



One-Armed Robot Letters



Zigzag Monster Letters



Aa Bb Cc Dd Ee Ff

Gg Hh Ii Jj Kk Ll

Mm Nn Oo Pp Qq

Rr Ss Tt Uu Vv Ww

Xx Yy Zz

Things to help at home



- Number bonds to 10 and 20,
- Count in 2s, 5s, 3s (x tables)
- Finding 1 more/less, 10 more/less
- Counting on and back from a given number
- Doubles and Halves
- Telling the time
- Reading as much as you can at home
- Letter and number formation
- Writing opportunities
- Learning the 2, 5 and 10 times table.
- Practising common exception words

By the end of Year 1, children should be confidently able to recognise, read and spell these words automatically. Any support with these words would be greatly appreciated. 😊

Phase 2 to 5 Tricky Words

Phase 2

I
no
the
to
go
into

Phase 3

he
she
we
me
be
you
are
her
was
all
they
my

Phase 4

said
have
like
so
do
some
come
little
one
were
there
what
when
out

Phase 5

oh
Mrs
people
their
called
Mr
looked
asked
could

The children need to be able to read and spell these words by the end of the year 1 and 2.
If you could practise these at home, that would be amazing 😊

Year 1 and 2 Common Exception Words

Year 1

the	they	one
a	be	once
do	he	ask
to	me	friend
today	she	school
of	we	put
said	no	push
says	go	pull
are	so	full
were	by	house
was	my	our
is	here	
his	there	
has	where	
I	love	
you	come	
your	some	

Year 2

door	gold	plant	clothes
floor	hold	path	busy
poor	told	bath	people
because	every	hour	water
find	great	move	again
kind	break	prove	half
mind	steak	improve	money
behind	pretty	sure	Mr
child	beautiful	sugar	Mrs
children	after	eye	parents
wild	fast	could	Christmas
climb	last	should	everybody
most	past	would	even
only	father	who	
both	class	whole	
old	grass	any	
cold	pass	many	

Parent Pop In



In the next few weeks, there will be a Parent Pop in. This is a chance to speak to the class teacher about any questions or concerns. This will also be a chance for you to collect any resources you may find useful to use at home. 😊

- Tricky word mats
- Common exception words
- Phonics sound mats to support spelling
- Reading comprehension questions to ask children when home reading.
- handwriting support
- Maths number formation
- Number bond and x table resources



Thank you!

Web links to useful websites to support homework:

<https://www.topmarks.co.uk/>

<https://mathsframe.co.uk/>

<https://www.bbc.co.uk/bitesize/levels/z3g4d2p>

<https://www.ducksters.com/>