

**Let us light the candle to signify the start of our Worship today-**



**Welcome Words –  
God is spirit.**

**Let us worship him in spirit and  
truth.**



# The Bishop's Harvest Appeal

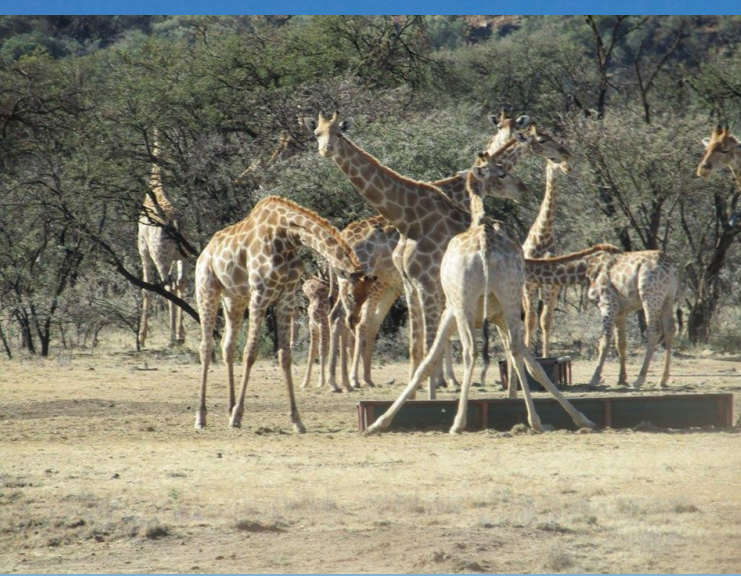


The Free State is  
in the centre of  
South Africa.

At the centre  
of the diocese  
is the city of  
Bloemfontein.







The landscape of South Africa is vast. The Free State is landlocked, it is hot, dry and dusty.

It is also breathtakingly beautiful and a place where giraffe and zebra roam free and cheetah are protected on the game reserves.







The housing and living conditions in Bloemfontein are extremely varied. There are grand old buildings, shops, schools, and businesses, sports stadiums, churches and big houses. However, on the outskirts of the cities are the townships where the housing is poor and the living conditions are difficult.



Standing on a hill above the city of Bloemfontein is an 8 metre bronze statue of Nelson Mandela. He was South Africa's first black president. Here are some famous words spoken by Nelson Mandela:

*A winner is a dreamer who never gives up.*

*It always seems impossible until it's done.*



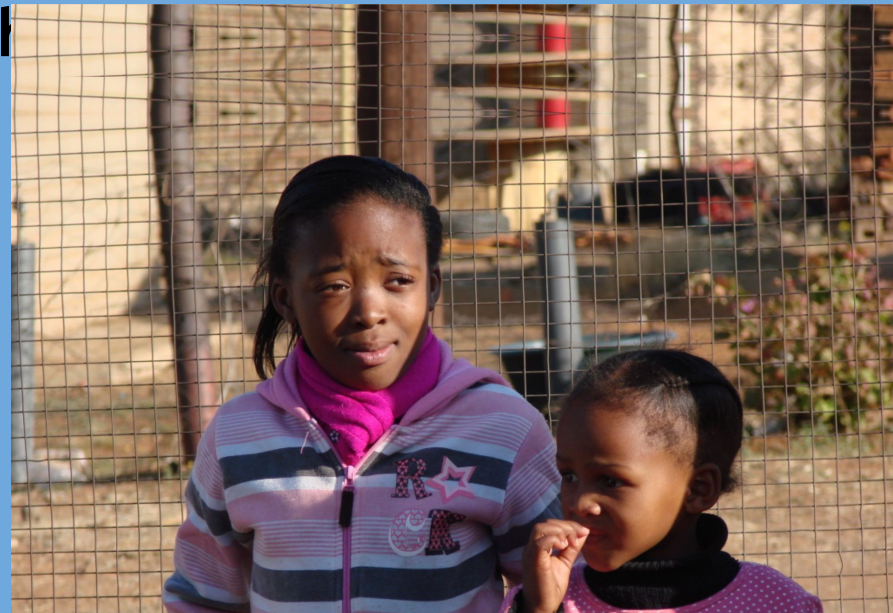
*Education is the most powerful weapon which you can use to change the world.*

*Do not judge me by my successes, judge me by how many times I fell down and got back up again.*

No one is born hating another person because of the colour of his skin, or his background, or his religion. People must learn to hate, and if they can learn to hate, they can be taught to love, for love comes more naturally to the human heart than its opposite.



This is the Mosamaria centre at St Patrick's Church on the outskirts of Bloemfontein. The centre helps the local children; as well as food and education these children need a safe place where they can play and be children. The struggles of their families mean that they have experienced extreme hardships and suffering that has taken away opportunities for the fun and laughter of childhood. The Mosamaria centre is a place where they can feel safe to be themselves and to be worry free for a short time each





One of the favourite meals given to the children visiting the Mosamaria centre is peanut butter sandwiches.



Here you can see bread being delivered and visitors from Blackburn Diocese volunteering to make the sandwiches.





## The sun

The sun in the logo represents the care and warmth given by Mosamaria to those in need.

Jesus the Son of God, like the sun, brought the warmth of God's love into the lives of the people he met. Like Jesus, the Mosamaria, trust team works with and welcomes those people that others reject or ignore.



## The flower

The flower in the logo represents growth and progress in healthy living. A flower needs certain conditions in order to grow and flourish, so do children. Mosamaria aims to provide help to ensure that children who are not flourishing are given the opportunities and resources they need to grow and be healthy. Mosamaria nurtures the children and their families so they can have the best life possible.





## The Red Ribbon

The red ribbon is the international recognised symbol displayed by people and organisations supporting those who are affected by HIV. The Mosamaria Trust aims to provide a network of care and support. Like the ribbon wraps around the sun and the flower in the logo the actions of the Mosamaria Trust wrap love and care around those who receive help from them.



# What would you like to be wrapped in?

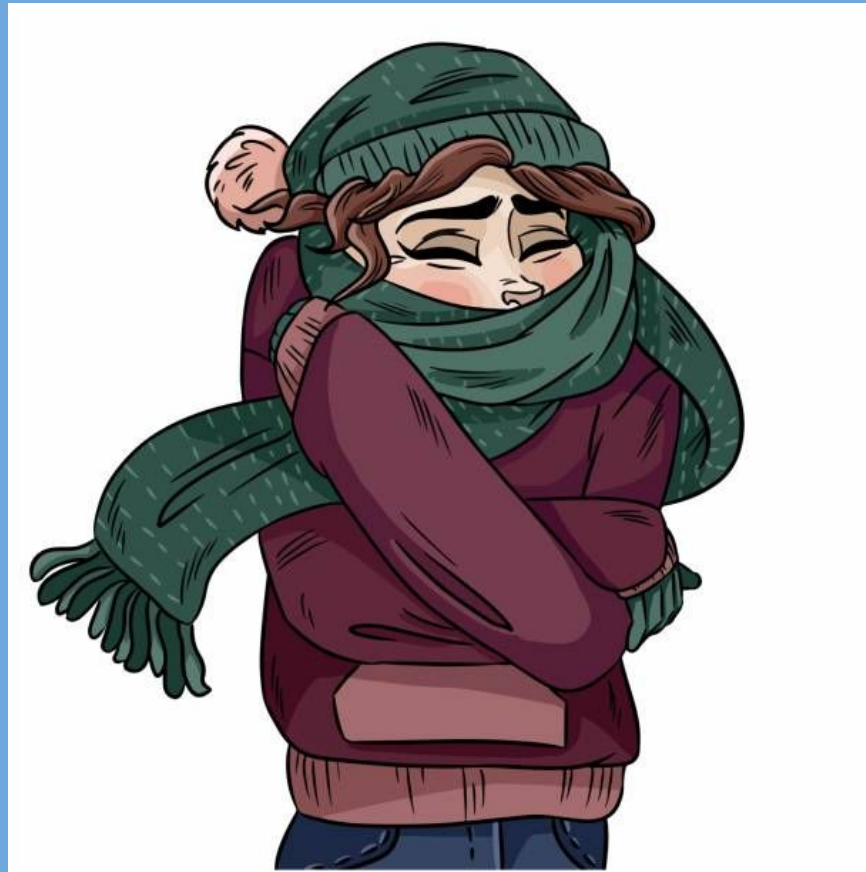
love kindness shelter  
food

care

family

security

friends





# Let us sing the Harvest song!



Closing Words –  
Grace, mercy and peace be with  
you  
**and also with you.**





**Let us blow out the candle to signify the end of our Worship today-**



**Let us blow out the candle to signify the end of our Worship today-**



**Let us blow out the candle to signify the end of our Worship today-**

