



Friday 12th December 2025

Celebration WORSHIP





Nursery and Pre School.





Reception Class





Year 1

YEAR 1

MORNING STARTER

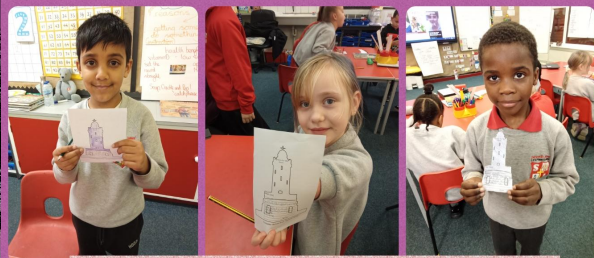
WRITING

PIC•COLLAGE





Year 3



Year 3- Prayers For Miss Davis



Year 3 - Communion At Church



PIC•COLLAGE



Year 4





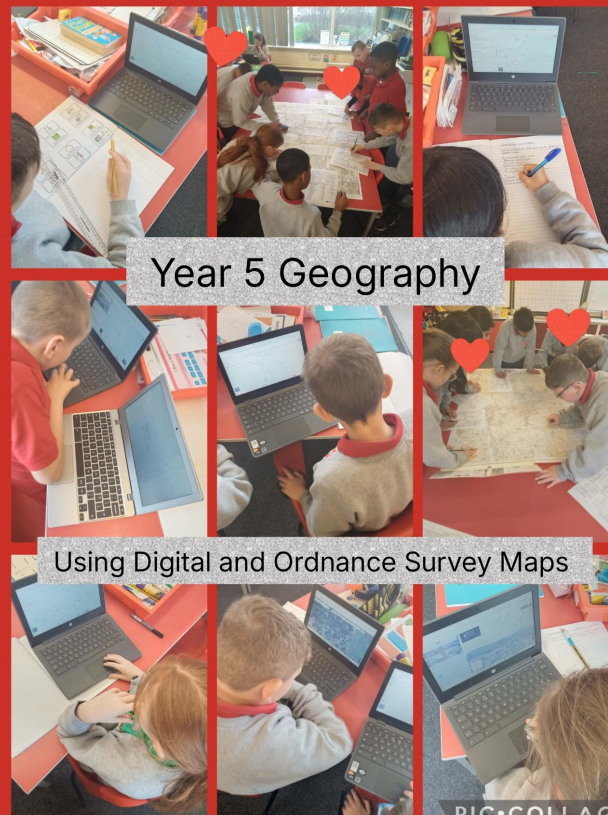
Year 5

Year 5 P.E.



Musical Dodgeball!

Year 5 Geography

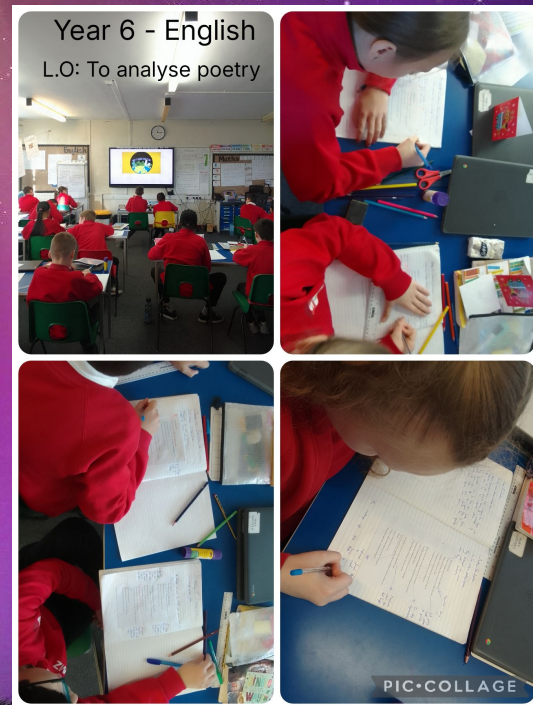
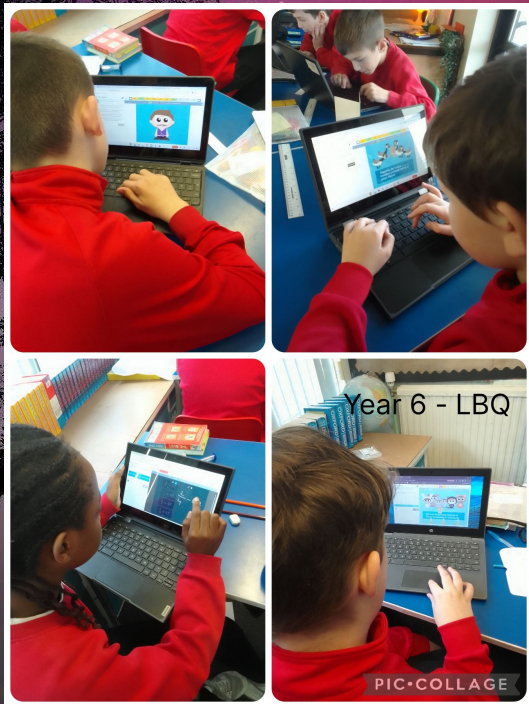


Using Digital and Ordnance Survey Maps





Year 6

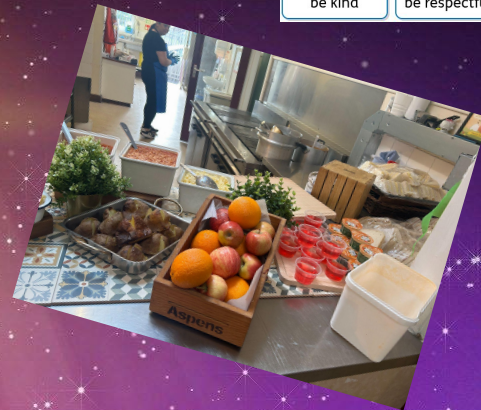




Lunchtime Awards



Headteacher's
Award





Extra Curricular Achievements



Happy Birthday to
you.



	Weekly Attendance	Number of Lates
Nursery/Pre School	75.5%	4.6%
Reception	94.8%	3.6%
Year 1	97.7%	7.4%
Year 2	95.0%	9.6%
Year 3	96.0%	7.4%
Year 4	97.0%	8.3%
Year 5	97.6%	1.8%
Year 6	95.7%	2.1%

**MOMENTS
MATTER,
ATTENDANCE
COUNTS.**

**Our winner's
this week with
97.7% are...**



Year 1!

ATTENDANCE

WHY IS IT IMPORTANT?

ABSENCE FROM SCHOOL

Children are required by law to attend school 180 days per year. The Government states that every pupil's attendance should be at least 90%.

How do YOU measure up?

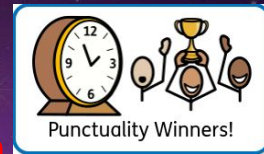
Attendance	Days Absent	Weeks Absent	Lessons Missed
95%	9 Days	2 Weeks	50 Lessons
90%	19 Days	4 Weeks	100 Lessons
85%	29 Days	6 Weeks	150 Lessons
80%	38 Days	8 Weeks	200 Lessons
75%	48 Days	10 Weeks	250 Lessons
70%	57 Days	12.5 Weeks	290 Lessons
65%	67 Days	13.5 Weeks	340 Lessons

89% & Below
Drastic effect on
academic achievement

95%-90%
Cause for
concern

100%-96%
Excellent





This week's winners with only 1.8% of lates are.....

Punctuality Matters

On time	<ul style="list-style-type: none">• Excellent punctuality• No learning time is lost
5 minutes per day	<ul style="list-style-type: none">• A child who is 5 minutes late to school every day will miss <u>3</u> days of school over the course of an academic year
10 minutes per day	<ul style="list-style-type: none">• A child who is 10 minutes late to school every day will miss <u>6.5</u> days of school over the course of an academic year
15 minutes per day	<ul style="list-style-type: none">• A child who is 15 minutes late to school every day will miss <u>10</u> days of school over the course of an academic year
20 minutes per day	<ul style="list-style-type: none">• A child who is 20 minutes late to school every day will miss <u>13.5</u> days of school over the course of an academic year

YEAR 5!

**This week's winners with 324
points are.....**

Year 6!





Let us sing.

**Visitors at the back, please
stand and join us.**





let us pray.



May the

grace

of



our



Lord,



Jesus Christ



and

the



love

of



God



our



Father



and

the

fellowship

of the



Holy Spirit

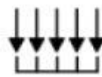


be

with



us



all,



forever



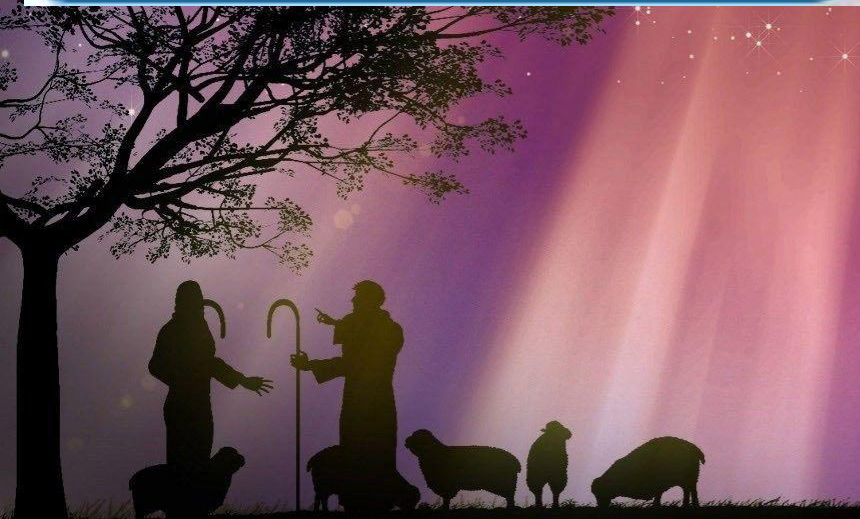
more.



Amen.



Thank you for
Worshipping with us.



LINE



Line up



In register order



No talking



Eyes facing forward