

A JOURNEY THROUGH EASTER



TOUCH



SMELL



HEARING



SIGHT



TASTE

Welcome Words and light the candle

This day the Lord has made.

Let us rejoice and be glad in it.





Why is the crucifixion so important to Christians?

Let's use our senses to understand the crucifixion a little more-



TOUCH



SMELL



HEARING

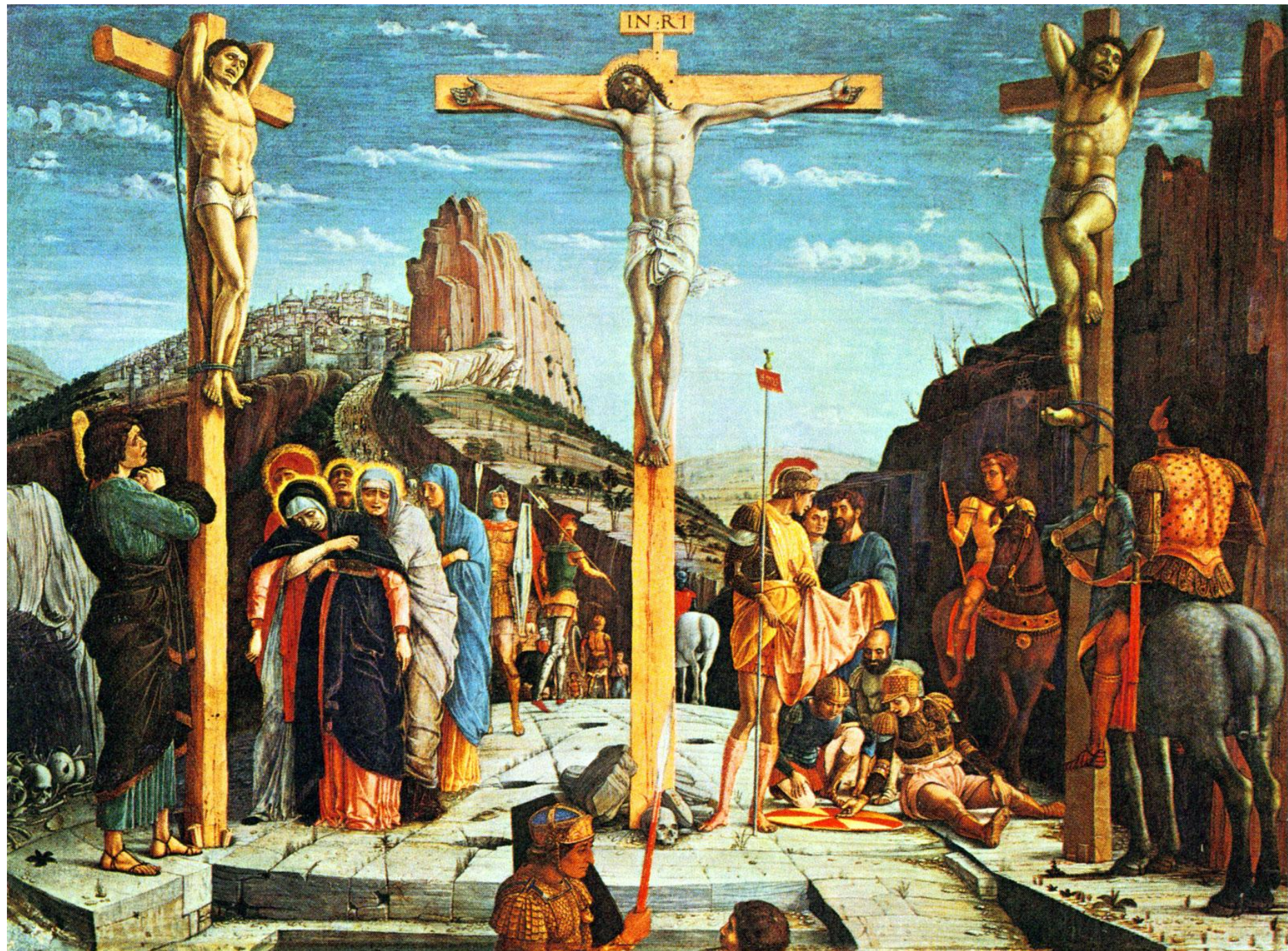


SIGHT



TASTE

Close your eyes and when you open them you will see a painting of the crucifixion, imagine that you are in that painting, actually there at that time...



When Jesus died the Bible said-

Luke 23 :32-49

It was now about noon, darkness came over the whole land until 3 in the afternoon, for the sun stopped shining. And the curtain of the temple was torn in 2.

Take a moment to reflect on the curtain being torn - what does this mean?



The curtain closed the most holy part of the temple off from people. But when Jesus died, this curtain was torn in two, opening up the holy place for all to enter and worship in.

Reflection-

Let us think about the meaning and importance of what we have discussed today.

Let us remember these words from the Bible -

**FOR GOD SO
LOVED THE WORLD
THAT HE GAVE HIS
ONE AND ONLY SON,
— THAT WHOEVER —
BELIEVES IN HIM
SHALL NOT PERISH
— BUT HAVE —
ETERNAL LIFE**

JOHN 3:16

Let us Pray-

Dear God,

We thank you for sending your Son down to forgive our sins by dying on the cross for us all.

We thank you for always giving us a home in your heart.

We thank you for giving us the wonderful opportunity to follow in Jesus' footsteps.

We thank you for inspiring us all to be better people.

In your name we pray,

Amen



Closing Words-

May the light and peace of Jesus Christ
our Lord be with you.

And also with you.

What can you see?

What can you hear?

What would you be able to smell?

What would you do in that situation?

What would you feel in that situation?