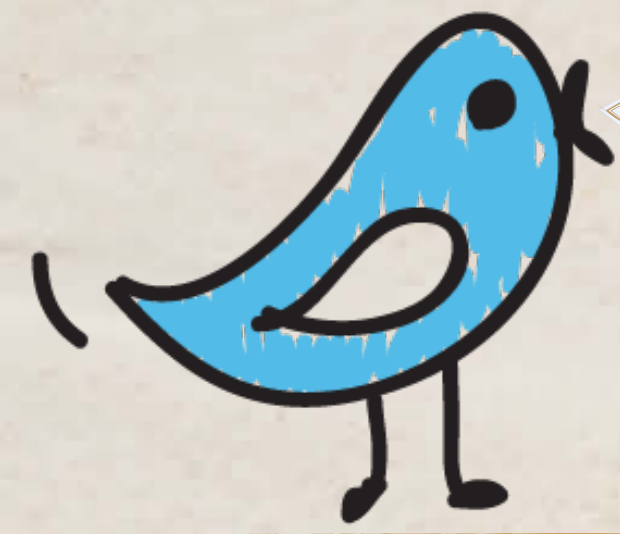


# Stable Structures

Today we will be...

Exploring a range of materials.

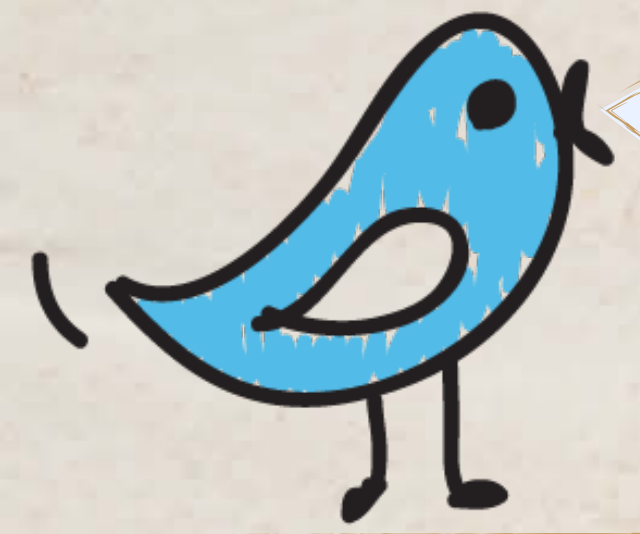


How many of these materials can you name?



**Back**

**Next**



Did you identify all the materials?



wood



rock



cardboard



rubber



fabric



plastic

**Back**

**Next**



How many of these materials can you name?



**Back**

**Next**



Did you identify all the materials?



glass



wool



metal



leather



sand



paper

**Back**

**Next**

Some of the car garages you have played with were probably made from **plastic**.  
What do you know about **plastic**?



**Back**

**Next**

Plastic is lightweight. It can have very bright colours. Plastic can be stiff and strong, like the plastic used for slides. It can be flexible, like the plastic used for balloons.



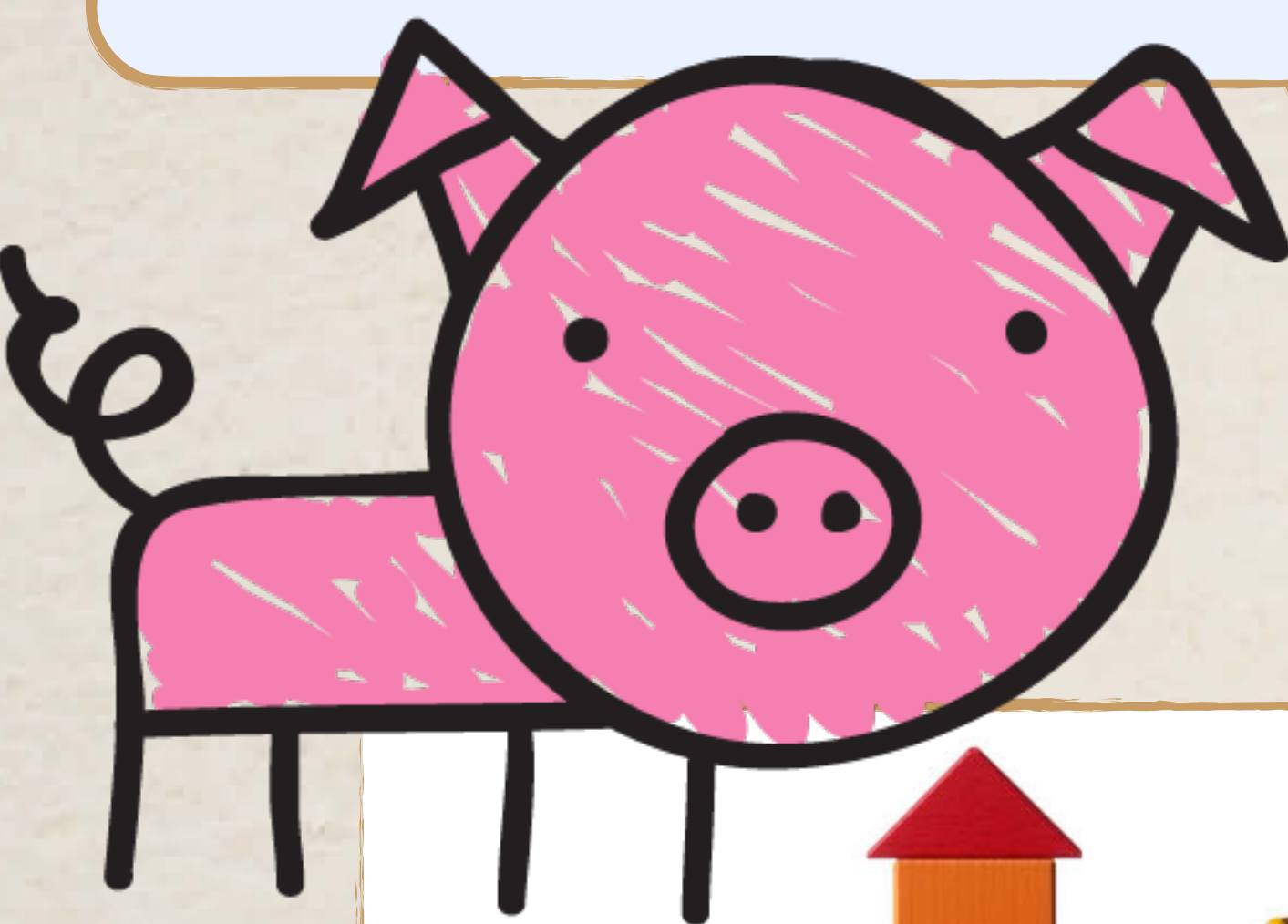
Some types of plastic can be broken easily. When plastic is broken it is difficult to repair. Plastic is a manmade material. It takes a long time to decompose. This means even when it is broken it stays around for a long time.



**Back**

**Next**

Some of the car garages you have played with were probably made from **wood**. What do you know about **wood**?



**Back**

**Next**



Wood can be heavy. It can be painted but its natural colour is shades of brown. Wood is normally stiff and strong, like the wood used for ride-on toys.



Some types of wood are weaker than others. When wood is broken it can often be repaired using glue. Wood is a natural material. It comes from trees. It takes a few years to decompose.



**Back**

**Next**

We are going to make our stable structures using cardboard, wood and paper. What do you know about **cardboard**?



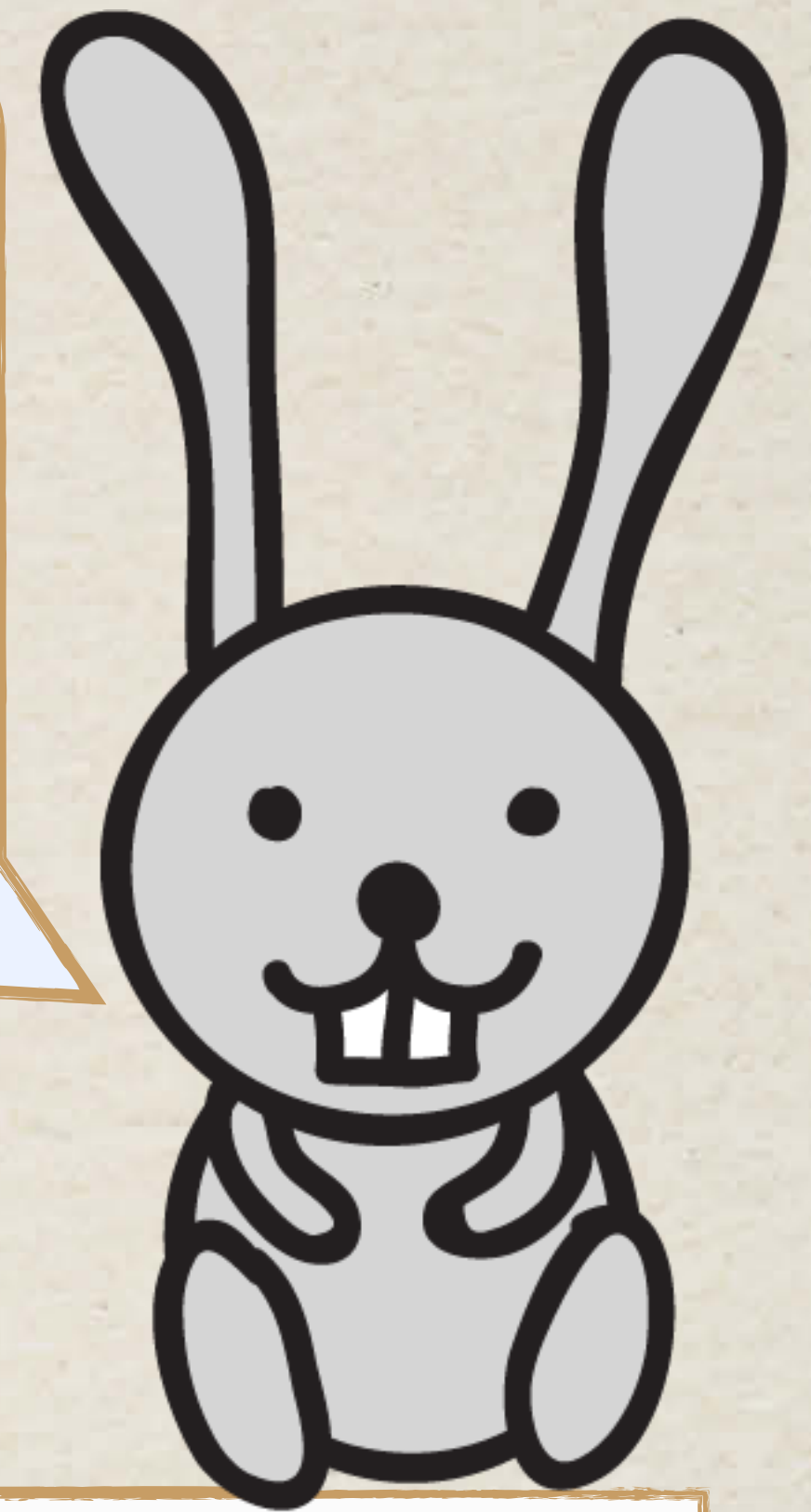
Think, pair, share...



**Back**

**Next**

We are going to investigate some different materials to help us decide the best material for each section of your structure.



wood



fabric



wool



paper



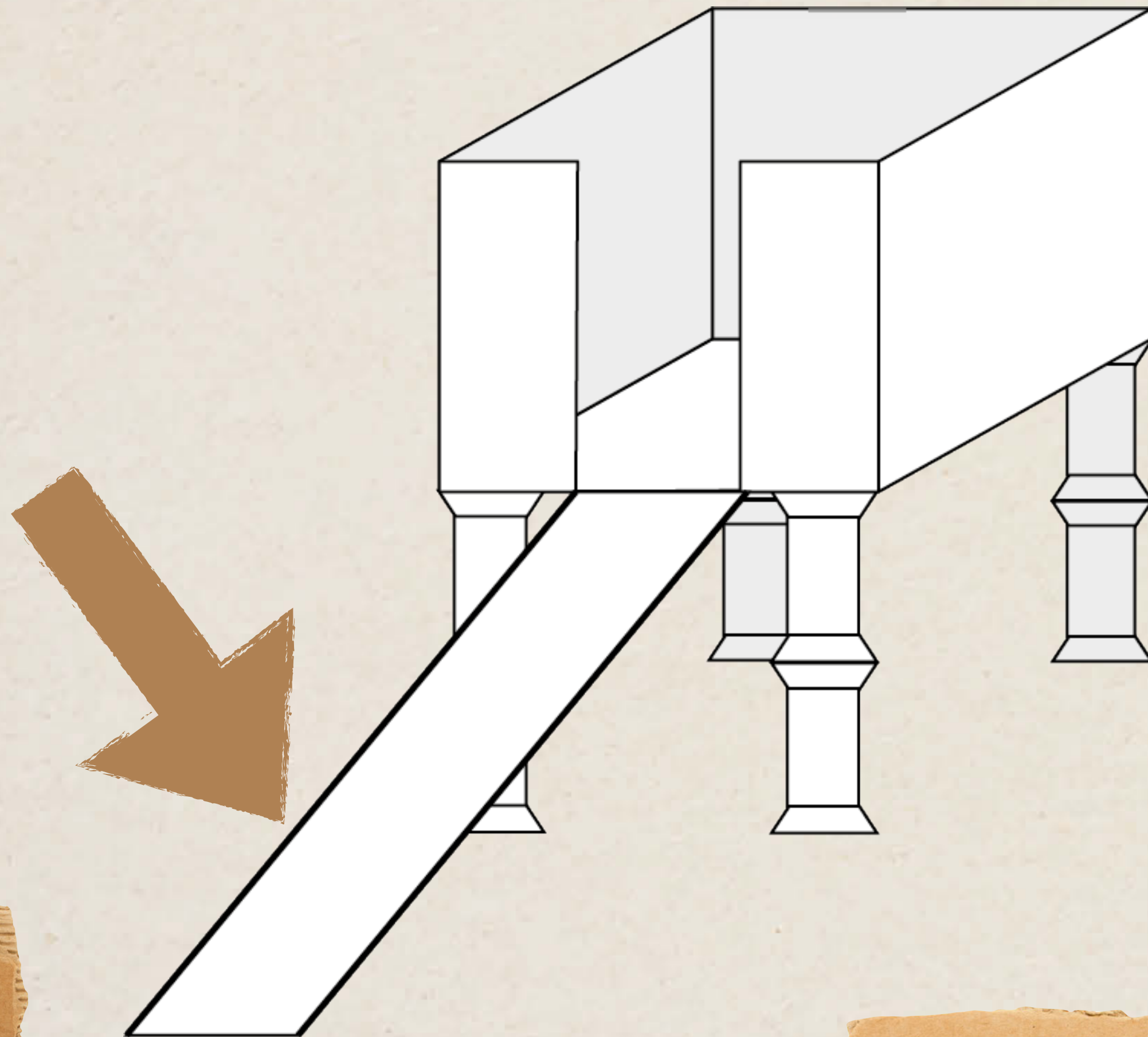
cardboard

**Back**

**Next**

# PLENARY

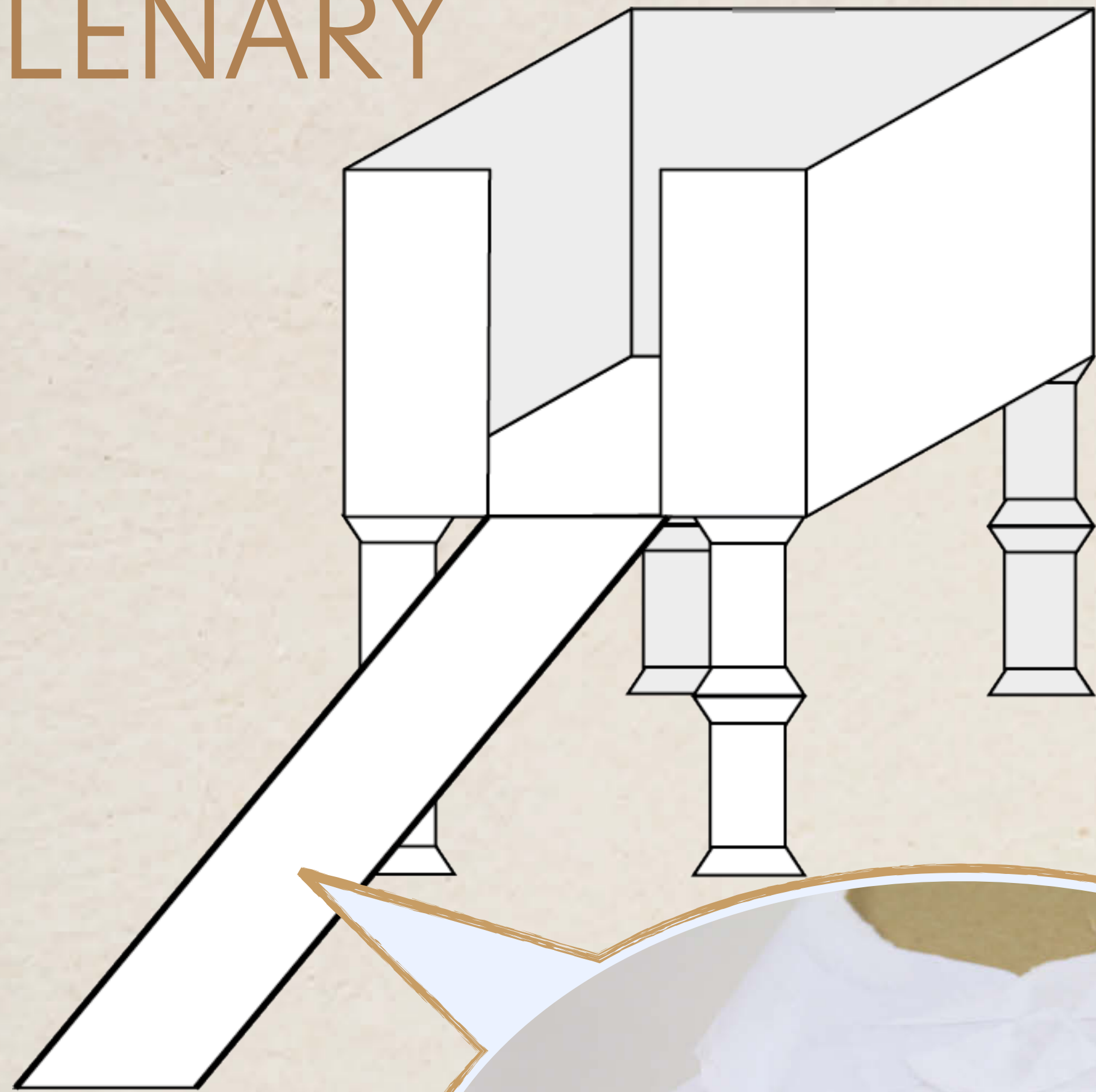
I would like to make a toy car garage. What material should I use for the sides of the ramp?



**Back**

**Next**

# PLENARY

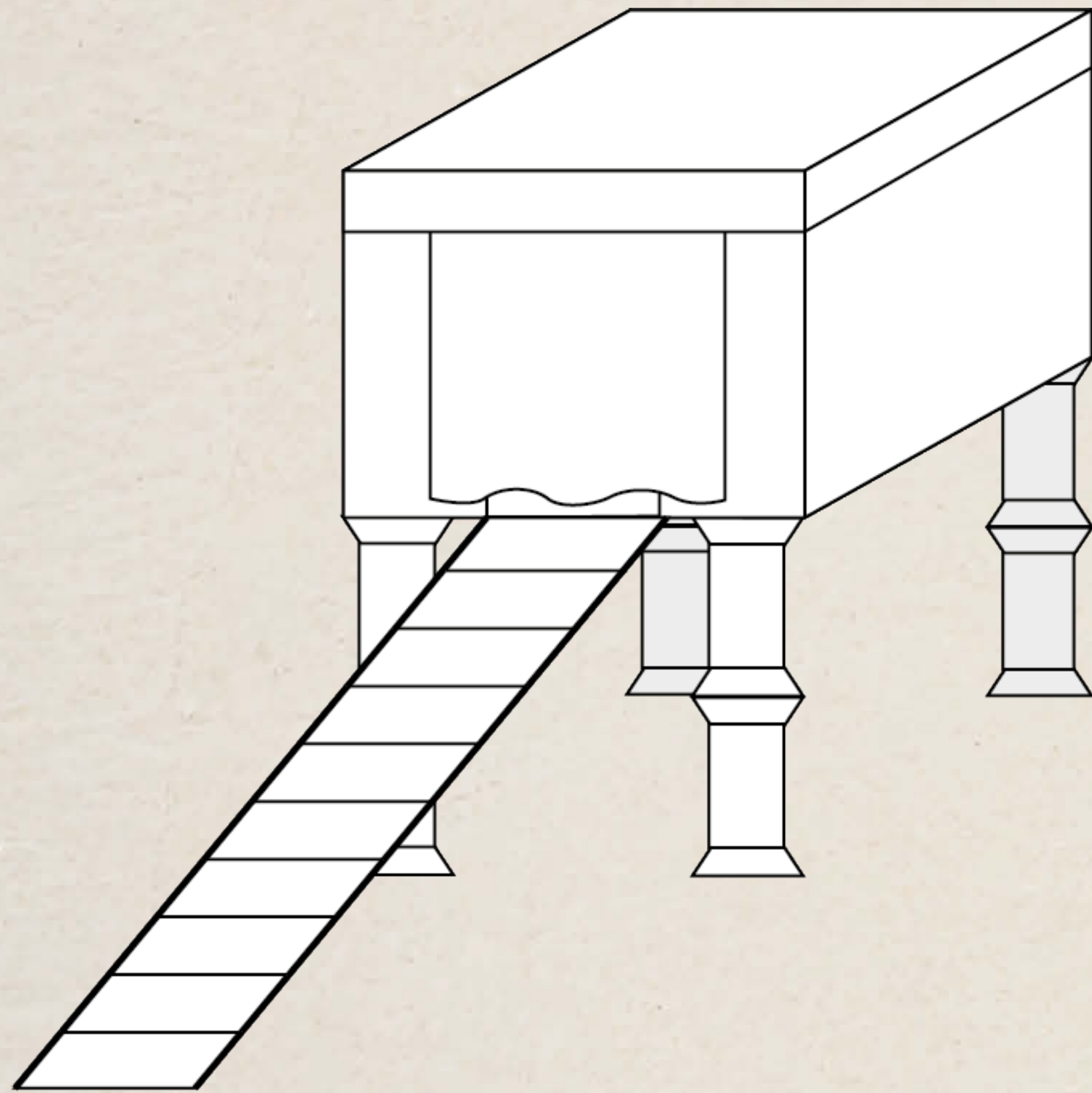


I could put a paper straw along each edge of the ramp and then cover the straw with strips of paper to secure it.



**Back**

**Next**



I would like to make a nesting box for my toy hamster. It needs to have a curtain across the entrance. What material should I use for the curtain?



**Back**

**Next**

# PLENARY



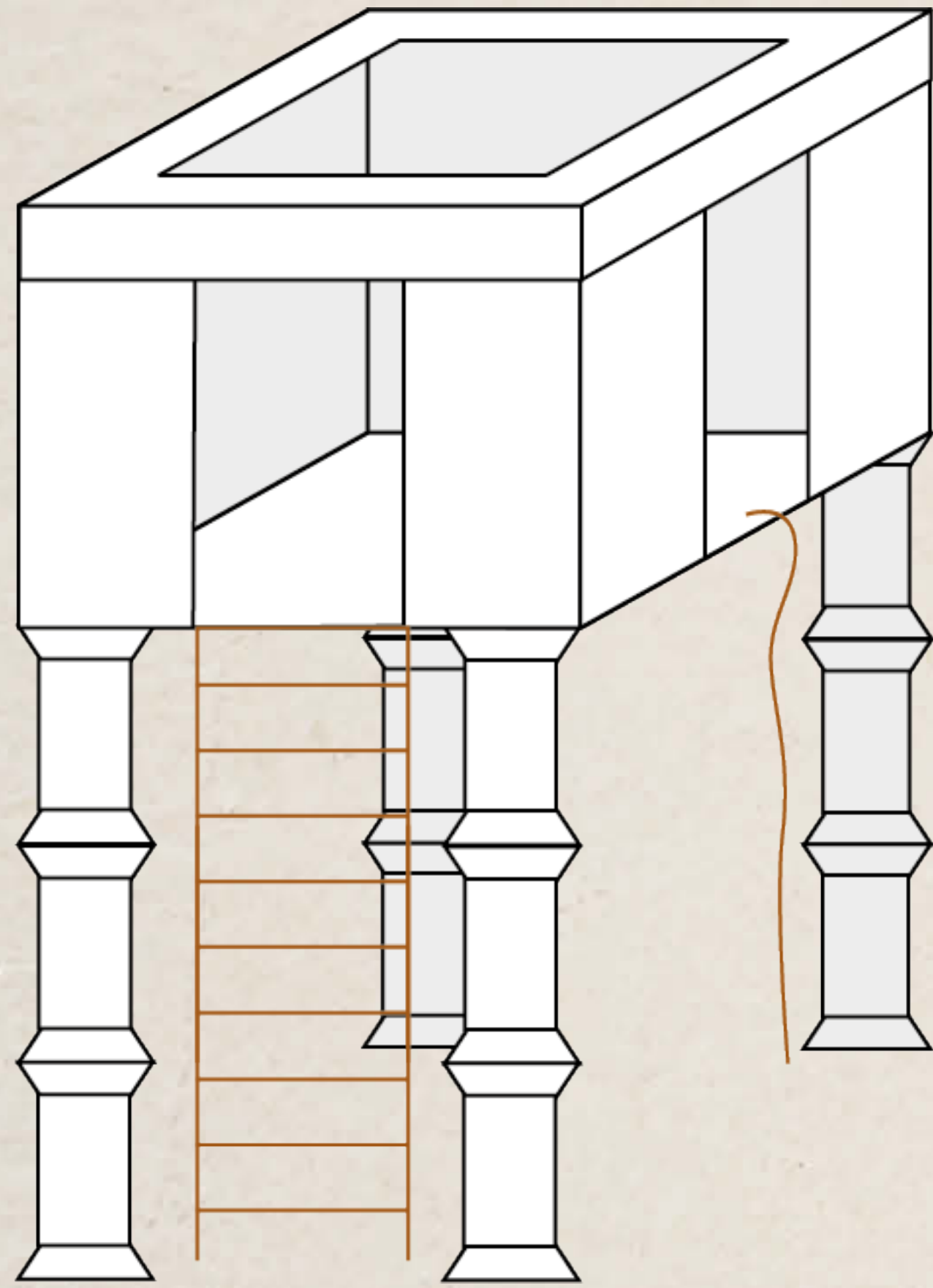
I could use a piece of fabric across the door as my curtain.



**Back**

**Next**

# PLENARY



I would like to make a toy tree house.  
What material should I use for the ladder and rope? What material should I use for the transparent panel in the roof? I would like to be able to see the stars, but not get wet!

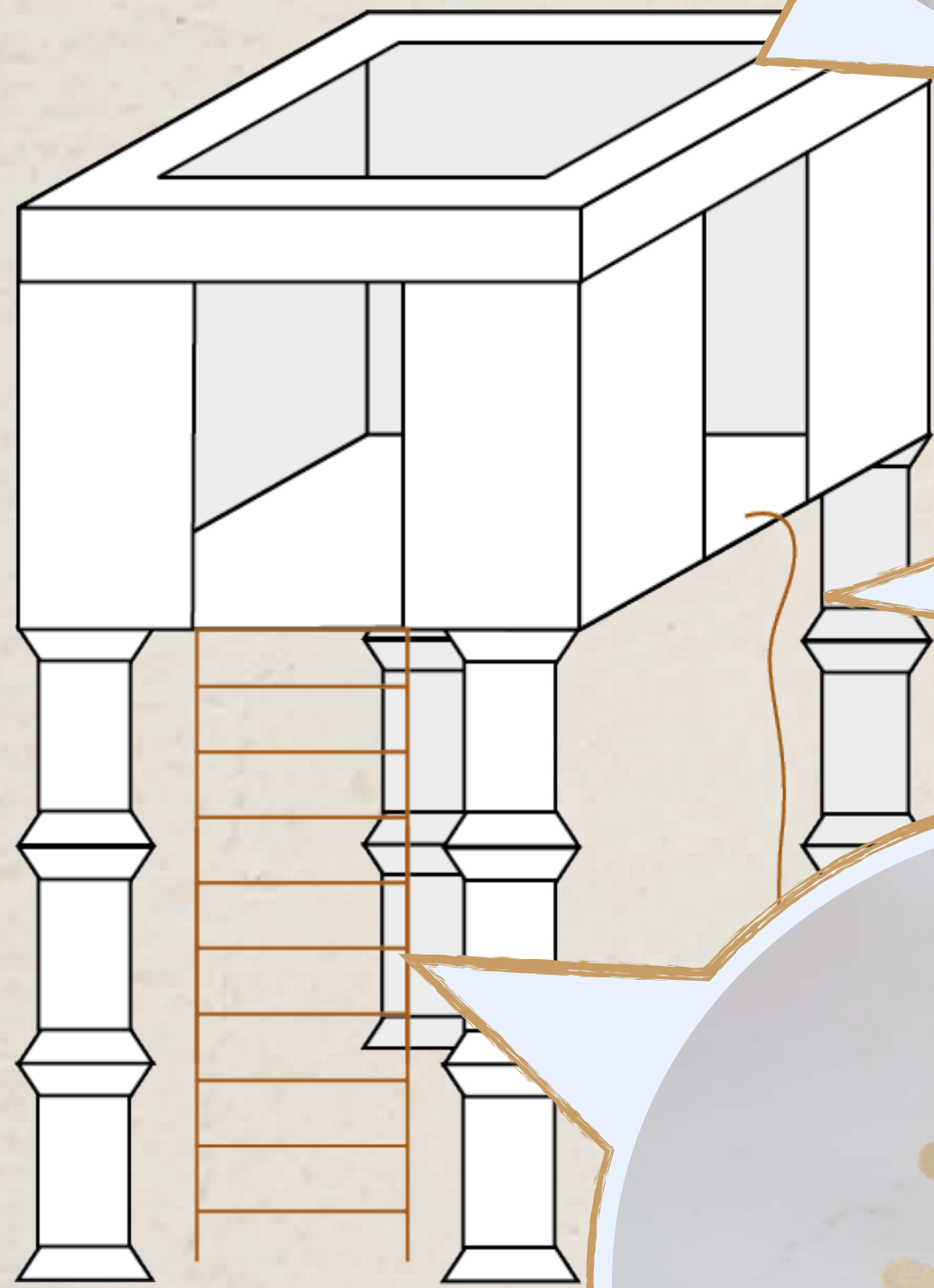


**Back**

**Next**



# PLENARY



I could use wool or string for my ladder and rope. If I wanted a ladder that wasn't flexible I could use lolly sticks. I could use plastic wrap for the window in the roof.

**Back**