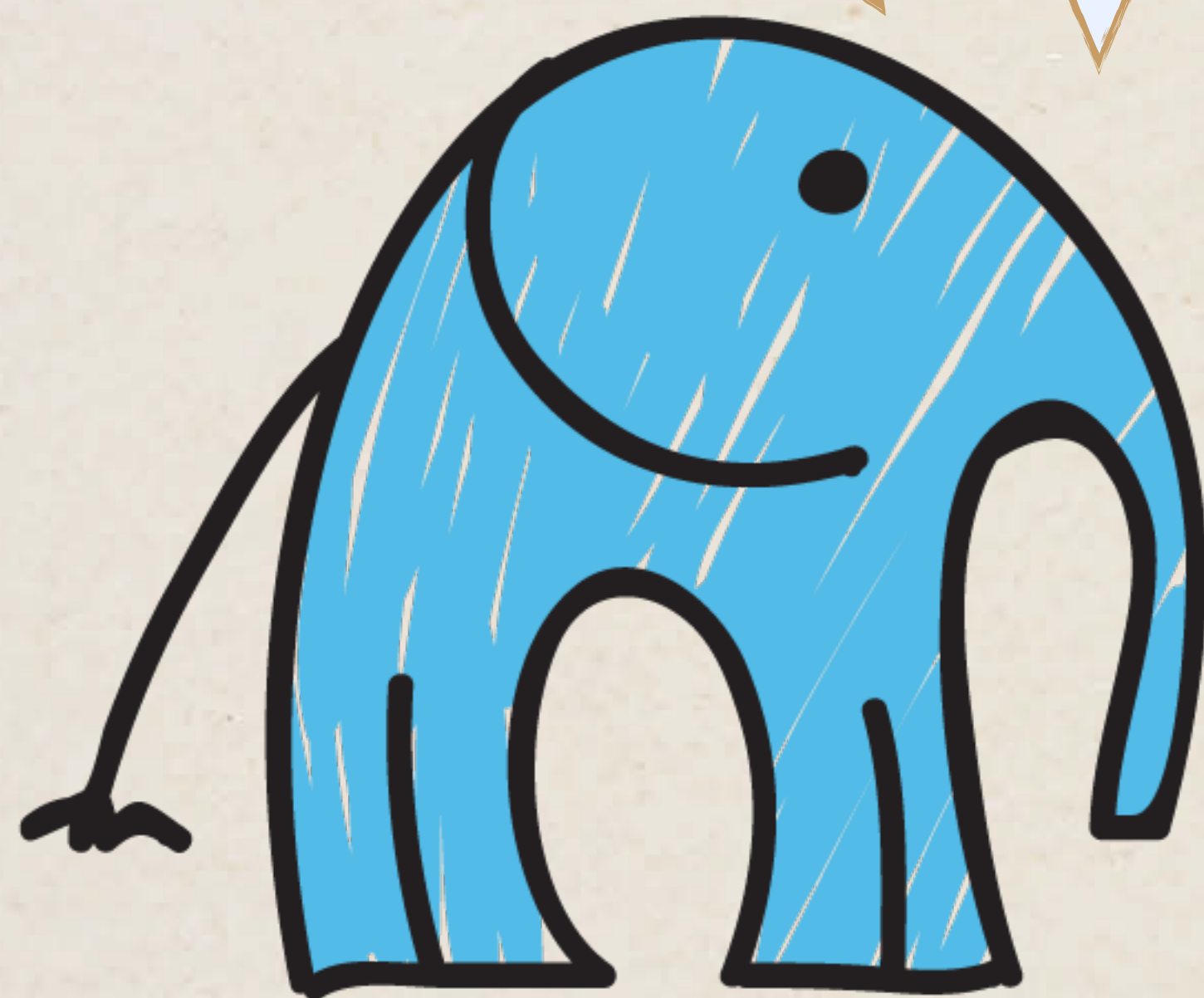


# Stable Structures

Today we will be...  
Evaluating products.

What have we been making?

What are they designed to do?



How will we know if our products are successful?

**Back**

**Next**



We have been designing and making stable structures. What does stable mean?

**Back**

[www.planbee.com](http://www.planbee.com)

**Next**

A stable object or structure is one that isn't likely to fall over.



**Back**

**Next**

Write a list of all the things a stable toy car garage structure should be able to do.

A large, empty white rectangular area with rounded corners, intended for writing a list. A brown pencil icon is positioned at the bottom left corner of this area.

**Back**

**Next**

Did you think of these things a toy car garage should be able to do?



- The toy car garage should:
- Stay standing, not fall over
  - Be able to hold the weight of toy cars
  - Have a safe route in and out for the cars

**Back**

**Next**

How can you find out if your stable structure meets these criteria?

A toy stable structure should:

- Stay standing, not fall over easily
- Be able to hold the weight of toys
- Have a safe route in and out for the toys



**Back**

**Next**

# PLENARY

How effective are your products?

Are they strong and stable?

Can they be played with easily?

Would they be improved if you made any changes or additions?



**Back**