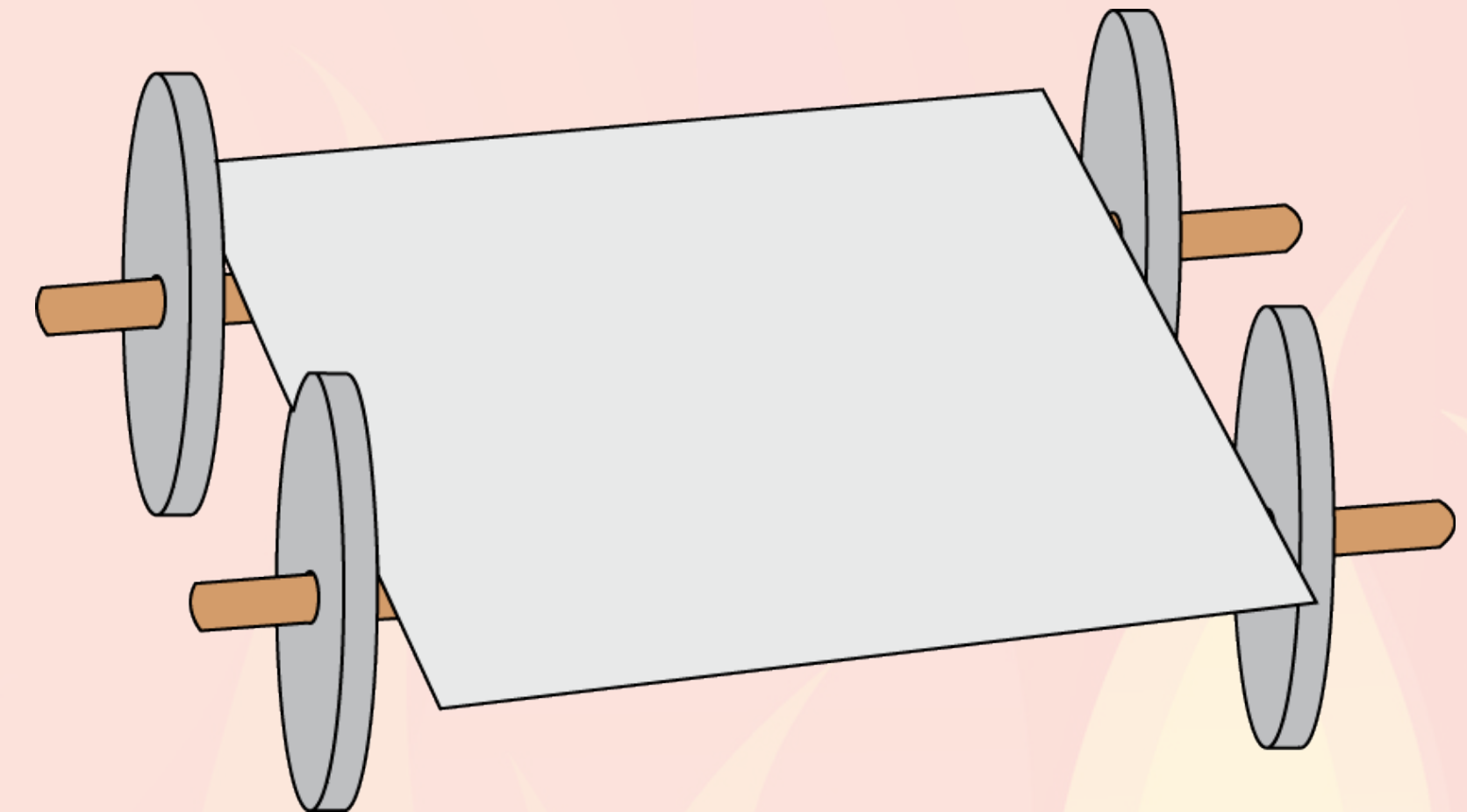
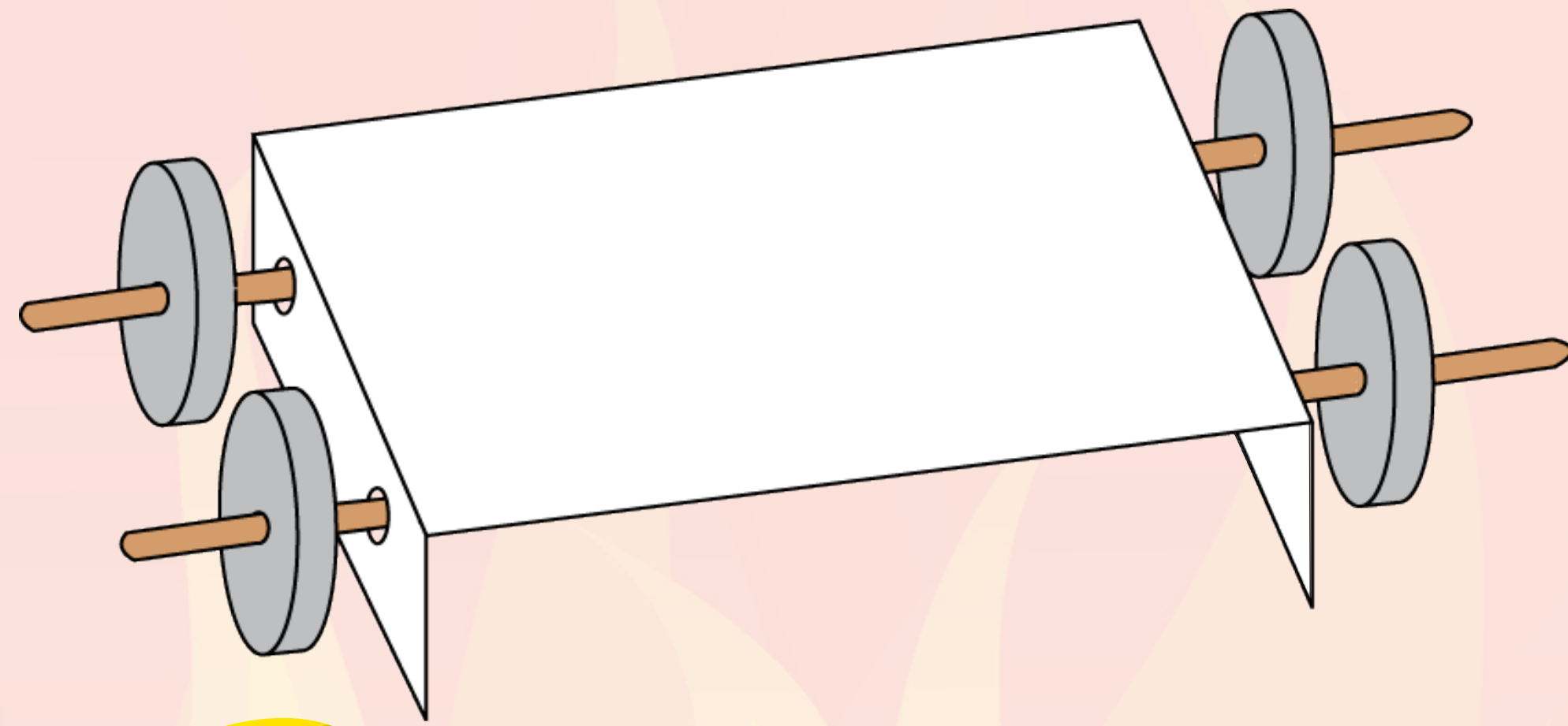


Making Fire Engines

Today we will be...

Finding out how to create and decorate the body of a fire engine.

In the last lesson, we looked at different ways of joining
wheels and **axles** to a **chassis**.

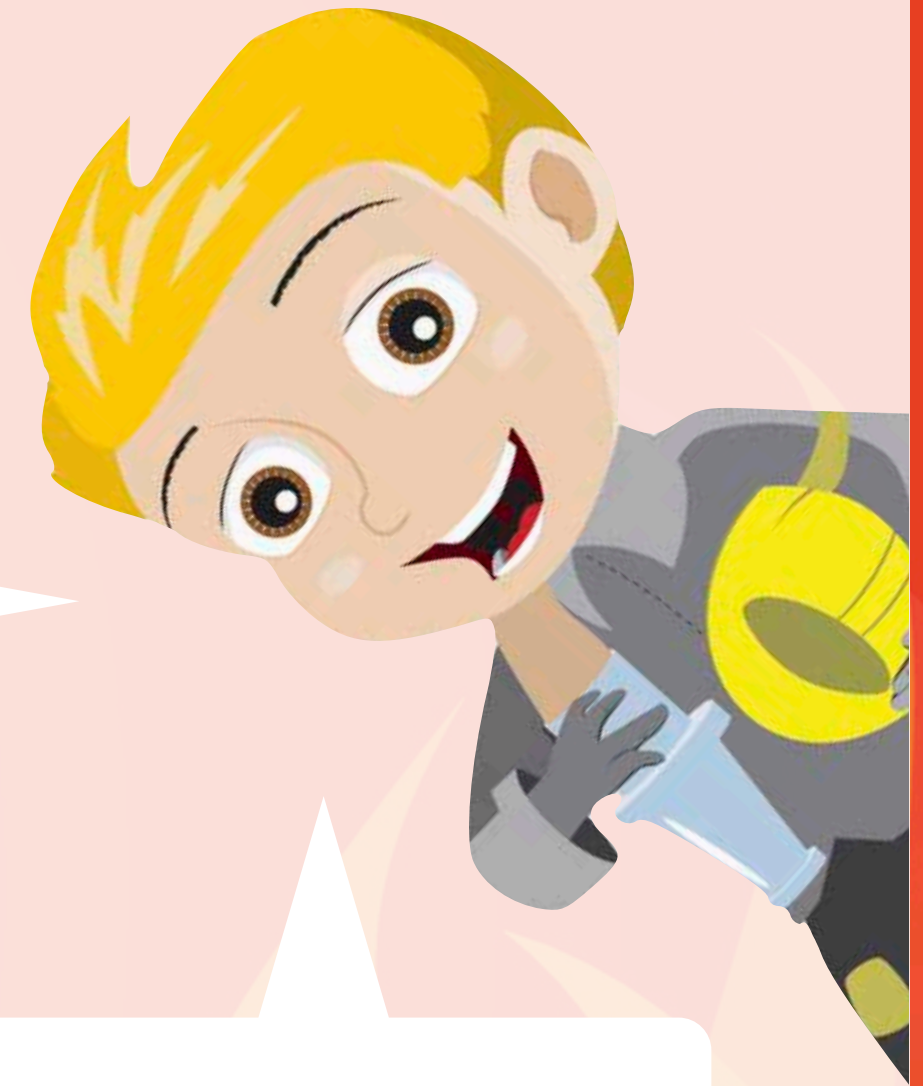


**These don't look like fire engines to me!
What else would we need to add to
make a fire engine?**

BACK

NEXT

Today we're going to look at different ways of making the body of a fire engine.



What shapes can you see on this fire engine?



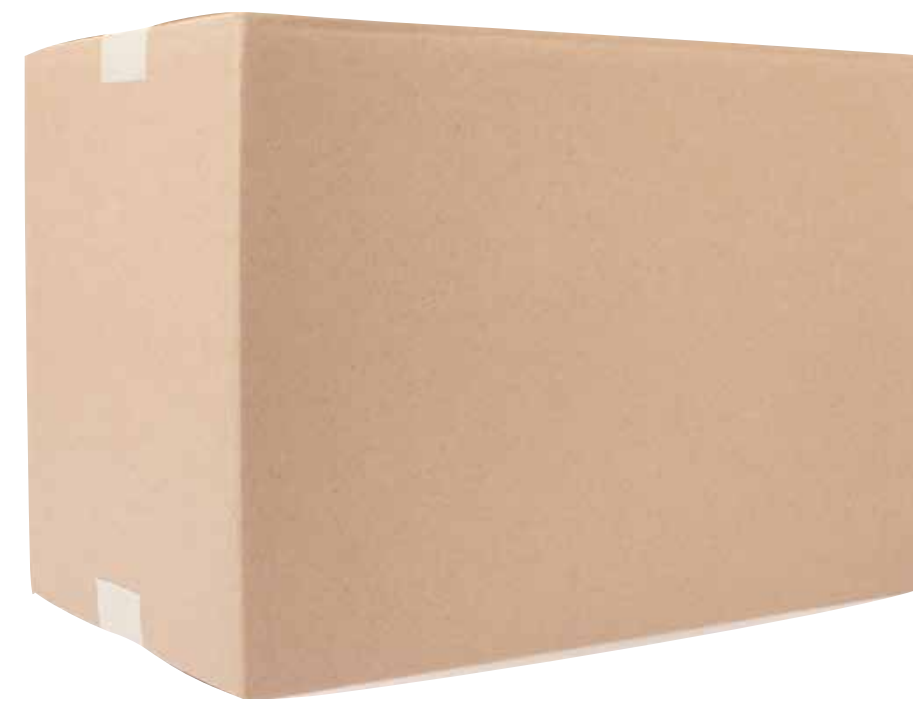
BACK

NEXT

How could you use these items to make the **body** of a fire engine?

How could you join the different parts together?

What **other items** could you use?

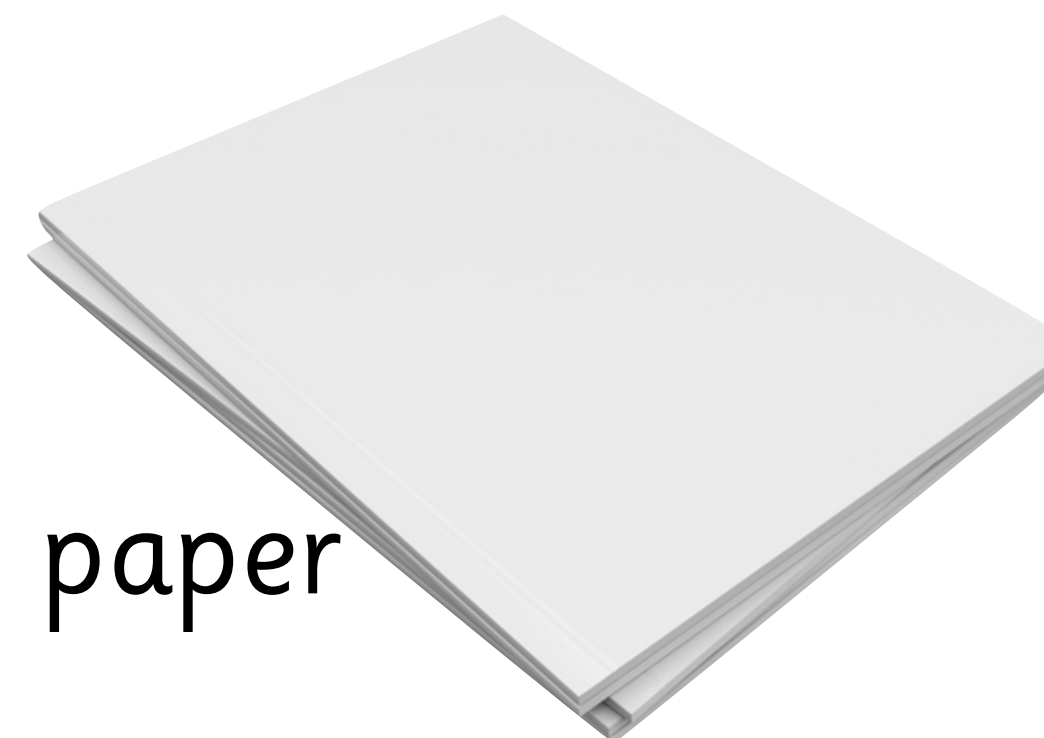


cardboard boxes

cardboard tubes



cardboard



paper

cotton reel



lolly sticks



empty cartons

craft matchsticks



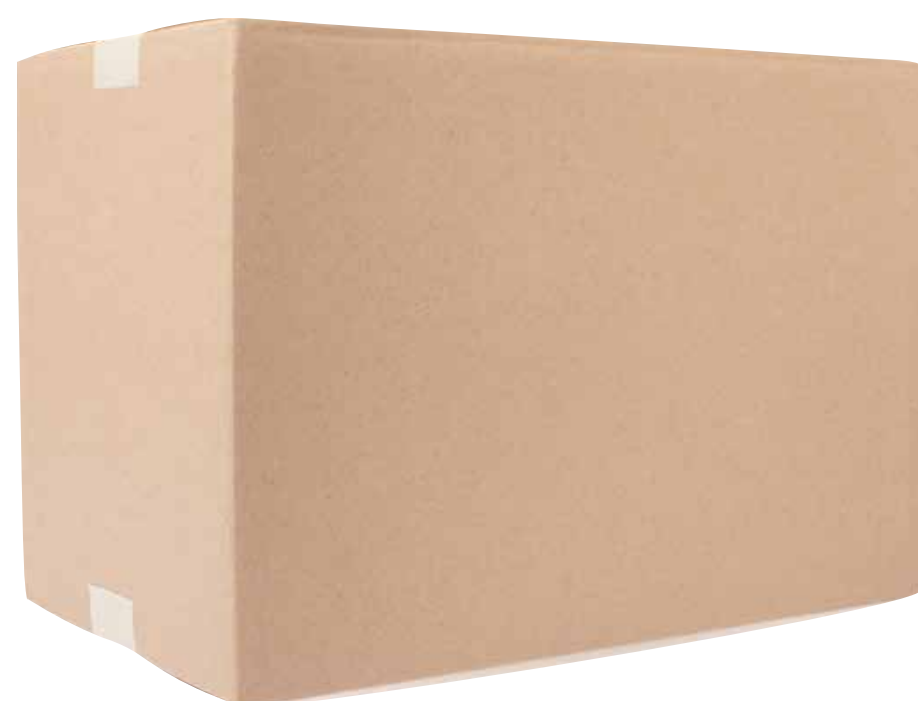
pipe cleaners



BACK



NEXT

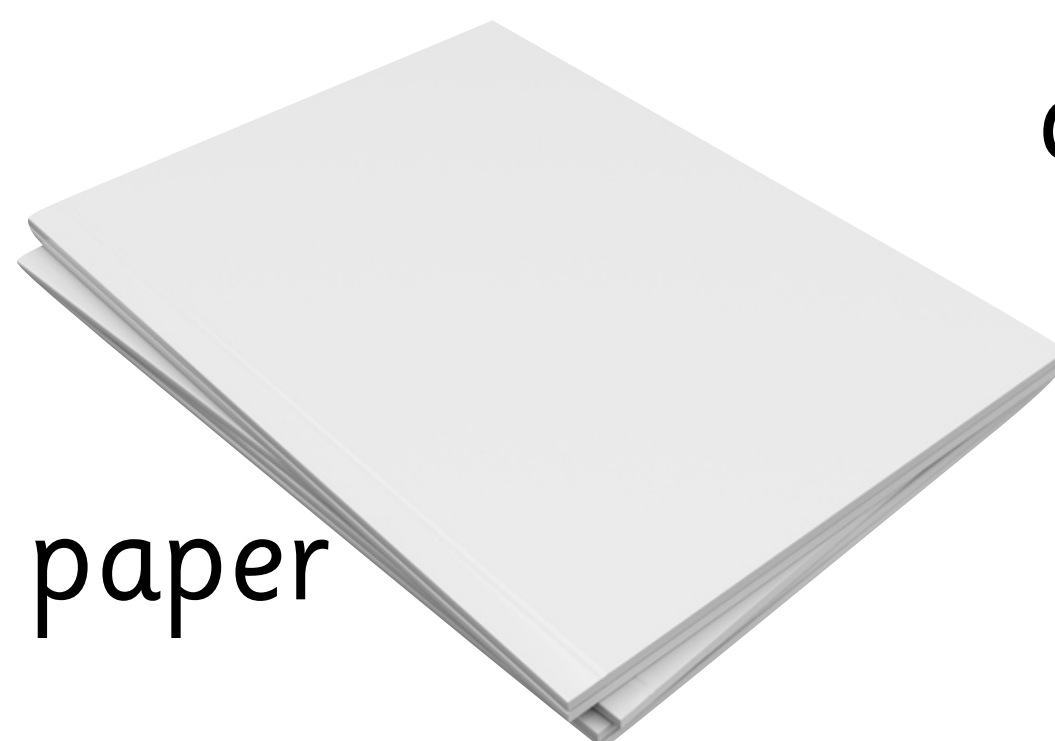


cardboard boxes

cardboard tubes



cardboard

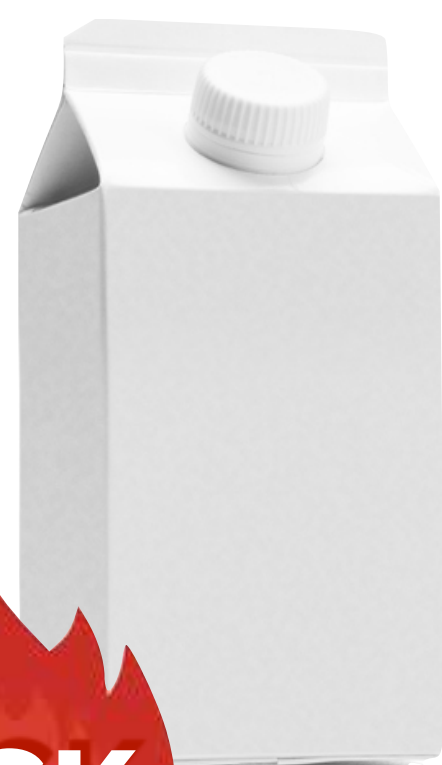


paper

cotton reel



lolly sticks



empty
cartons

craft matchsticks



pipe cleaners

How could you use
these items to make a
ladder for a fire
engine?

How could you join
the different parts
together?

**What
other
items
could you
use?**



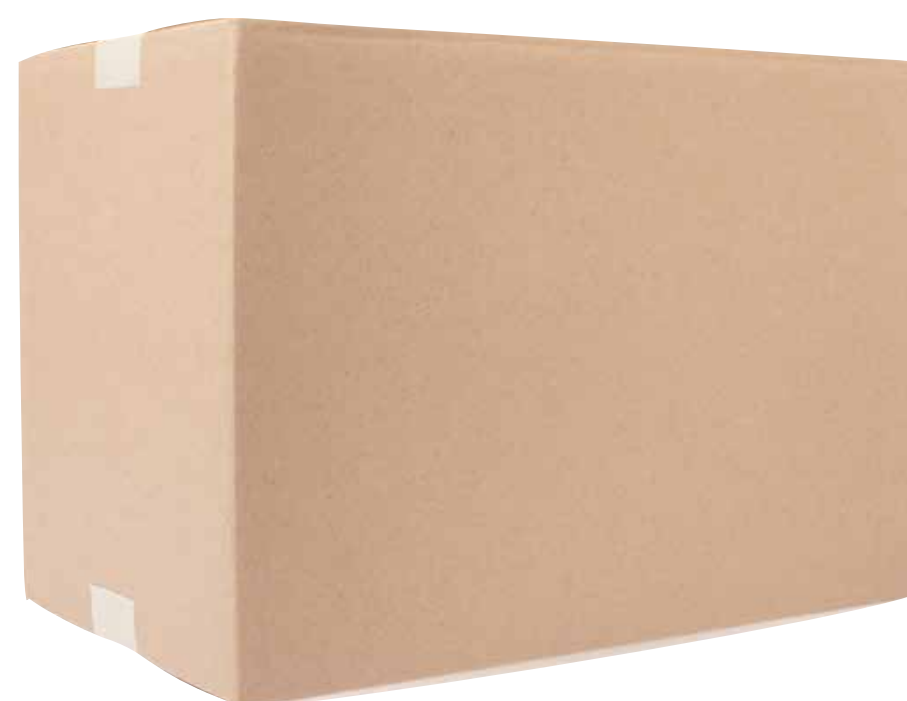
NEXT

BACK

How could you use these items to make a **fire hose** for a fire engine?

How could you join the different parts together?

What other items might you need?

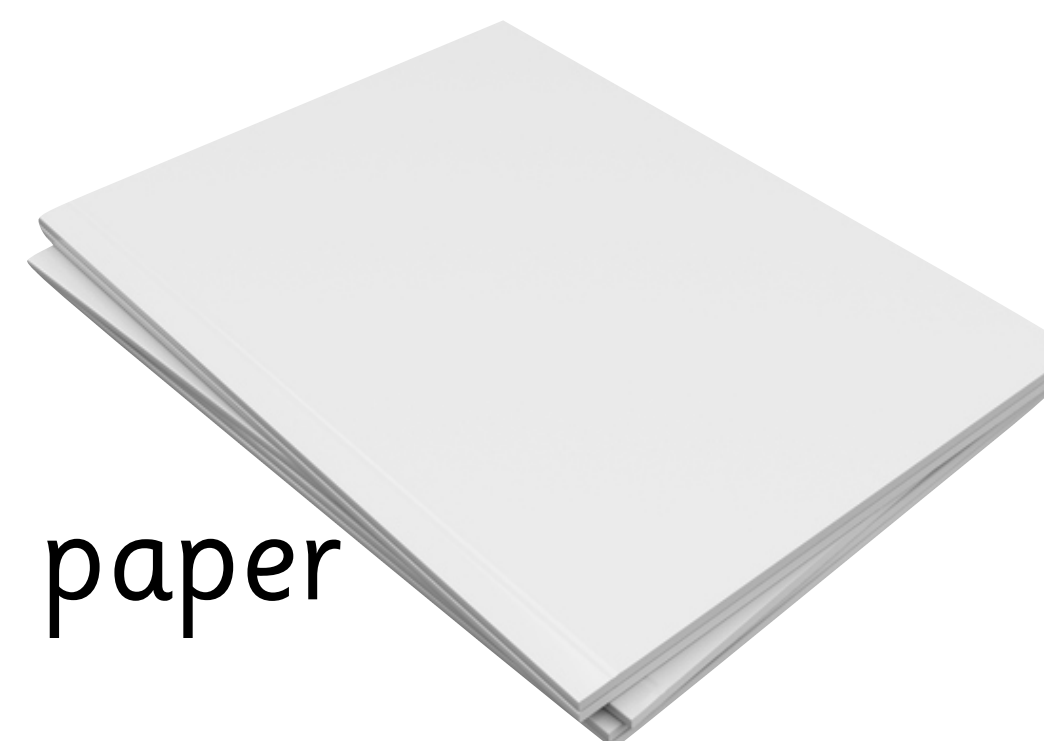


cardboard boxes

cardboard tubes



cardboard



paper

cotton reel



lolly sticks



empty cartons

craft matchsticks



pipe cleaners





**Who's ready to go
and investigate different
ways to create the body of a
fire engine?**

BACK

NEXT

PLENARY

Well done! You worked really hard looking at different ways of making the body of a fire engine!



- ☼ What kind of materials did you fit together?
- ☼ How did you join them together?
- ☼ Which materials didn't join together easily?
- ☼ How do you think you could join the body you made to the chassis?

BACK

NEXT