

Making Fire Engines

Today we will be...

Designing a fire engine.



What have we learnt about fire engines so far?



What different ways can we make the different parts of a fire engine?

BACK

NEXT

Today, you will be **designing** your own fire engine so that you can make it in the next lesson. It's really important to think carefully about your designs so that your finished product works really well.

What would your fire engine model need in order to be successful?

What should it be able to do?

What should it look like?

What should it have?

Think, pair and share your ideas!



BACK

NEXT

Design criteria:

- ✿ It must have moving wheels so it can get from place to place.
- ✿ It must be red and have the word 'Fire' on so people recognise it.
- ✿ It should have a windscreen and doors.
- ✿ It could have a ladder.
- ✿ It could have a fire hose.
- ✿ It could have blue lights.

**Here are
my design
criteria.**



BACK

NEXT

What materials and tools will you need to build your fire engine?

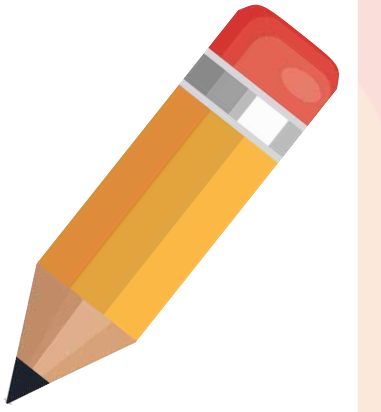


How will you decorate your fire engine?





What kind of axles and chassis will you use? Why?



How will you join all the parts of your fire engine together?





**Are you
ready to go and
design your fire
engine?**

BACK

NEXT

PLENARY

Show your design to a partner.

You have five minutes to go through your designs together.

What two things do you like most about your partner's design?

Can you think of two ways your partner could improve their design?



BACK

NEXT