



Making Mini Greenhouses



Learning Objective:

To evaluate a finished product

Back

Next

Now that we have finished making our mini greenhouses, we need to evaluate them.



What does
this mean?

Why is it
important?



Think, pair, then share your ideas.

Back

Next

When we evaluate a finished product, we need to look at how **successful** it is. It is important to do this so that we know what worked well, and how we could improve on our design next time. One of the most crucial questions we need to ask ourselves is...

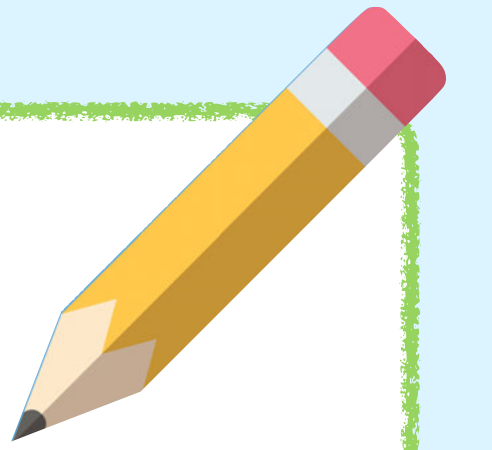


Does it meet the design criteria?

Can you think of any other questions we could ask about our mini greenhouses in addition to this?



What other questions did you think of?



Back

Next



Now it is time to
evaluate your completed
mini greenhouse!

One final note before you go...

Back

Next

It is important that you are **honest** when evaluating your product. It is rare that any completed design is perfect the first time round! Designers usually spend a lot of time looking at their products and **improving** them. This making and adjusting process can be repeated several times until a designer and their clients are completely happy with the finished product, and it is the best it can be.

So... try not to answer questions like this...!

