



Deepdale Community Primary School



Year 1 Newsletter Autumn Term 2



English

Reading

You can support your child at home by reading at least 3 times a week and signing the diary every time.

Writing

The Writing this half-term is based on the text 'Lost and Found' by Oliver Jeffers. The children will be writing an Information Fact File about a character and innovating the story.

Spelling

The children will continue to learn the spelling of new words during Phonics and these will be sent home each week to learn.

Who will be a spelling champion?



Handwriting

Letter formation is key to becoming a fluent writer. This half-term the children will continue to practice writing each letter correctly, following the letter pattern and write each letter on the line.



Maths

Addition and Subtraction

Add 1 or 2 to a number
Subtract 1 or 2 from a number
Subtract on a number line
Subtraction word problems

Place Value to 20

Counting forwards and backwards to 20
How many tens and ones are there in numbers?
One more and one less
Compare numbers
Order 3 numbers

Shape

Recognise and name 2D shapes
Sort 2D shapes
Recognise and name 3D shapes
Sort 3D shapes
Making patterns with 2D and 3D shapes

Reminders

School begins at 8:45am for Year 1. Doors open at 8:35am.

P.E: Please come to school dressed in your P.E kits with all jewellery removed.

Key Dates: Zoo2U visit for Year 1 on Tuesday 28th November. Please pay via ParentPay.

What are we learning this half-term?



Science

Animals

We are learning...

- 10 animals that are native to the UK.
- 10 commonly known animals found outside the UK.
- that carnivores eat other animals; herbivores eat plants and omnivores eat both; and name one of each.
- animals can be grouped by their features.
- to name some features, such as gills, scales, feathers, skin, living on land and water, having babies or eggs.

History

Changes within Living Memory

Toys

We are learning...

- that toys have changed.
- that toys children play with today are very different to those from the past.
- what toys are made of has changed.
- that some types of toys have been around for many years.



R.E



Christianity

Jesus

We are learning that...

- the story of Jesus being born is the Nativity.
- Christians believe Jesus is a special baby.
- at Christmas Christians celebrate Jesus being born.
- cards and gifts are sent at Christmas and why.

PSHE

Relationships

Who is special to us?

We are learning...

- that family is one of the groups they belong to, as well as, for example, school, friends, clubs.
- about the different people in their family/those that live and care for them.
- what their family members, or people that are special to them, do to make them feel loved and cared for.
- how families are all different but share common features – what is the same and different about them.
- about different features of family life, including what families do / enjoy together.



Design Technology

Basic Mechanisms

Pop-Up Cards

We are learning...

- to fold, tear and cut paper and card.
- to cut along lines, straight and curved.
- to use a hole punch.
- to insert paper fasteners in card.
- to experiment with levers and sliders to find different ways of making things move.

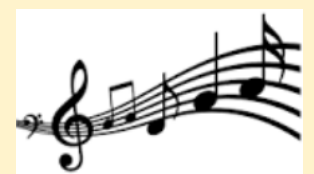


Music

Singing

We are learning to ...

- sing, rap, rhyme, chant and use spoken word.
- demonstrate a good singing posture.
- sing songs from memory.
- copy back intervals of an octave and fifth (high,low).
- sing in unison.



To find out more information about the learning this half-term, please visit the Year 1 tab of the school website where you will find the key learning and vocabulary.

Key Information:

W/B 6th November: Speak Out, Stay Safe Week

W/B 13th November: Anti-Bullying Week

Monday 13th November: Odd Socks Day

Friday 17th November: 'Children in Need' Non-Uniform Day

Enrichment Opportunities:

Tuesday 28th November: Zoo2U visit

Tuesday 12th December: Christmas Nativity

