



# Deepdale Community Primary School

Reception Induction Meeting  
June 2024





# Welcome

## We are proud to welcome you to Deepdale Community Primary School



- ❖ We are a happy, vibrant and successful school offering Early Years and Primary education to children ages 3-11 years.
- ❖ The school is at the heart of the local community.
- ❖ We are proud of our cultural diversity – it enhances and enriches our school.
- ❖ Our school is a special place to learn where children are happy, friendly and they achieve well.

# Meet the Teachers



**Mrs. Pollard**  
Deputy Headteacher  
& EYFS leader

## Class Teachers and Teaching Assistants

Ladybirds Class	Butterflies Class	Bumblebees Class
Mrs Baker Mrs Atkinson	Miss Lewis Mrs Chinnam	Mrs Burton / Mrs Mirza Miss Byrne

# Meet the Extended Team



## Sports Coaches



Mr. Mac

Mr. Catlow

## Pastoral Support



Mrs.  
Musa

Mrs.  
Fearn

Mr.  
Ozy

Mr.  
Modashia

School Business  
Manager

Mr. Scott

SENDCo

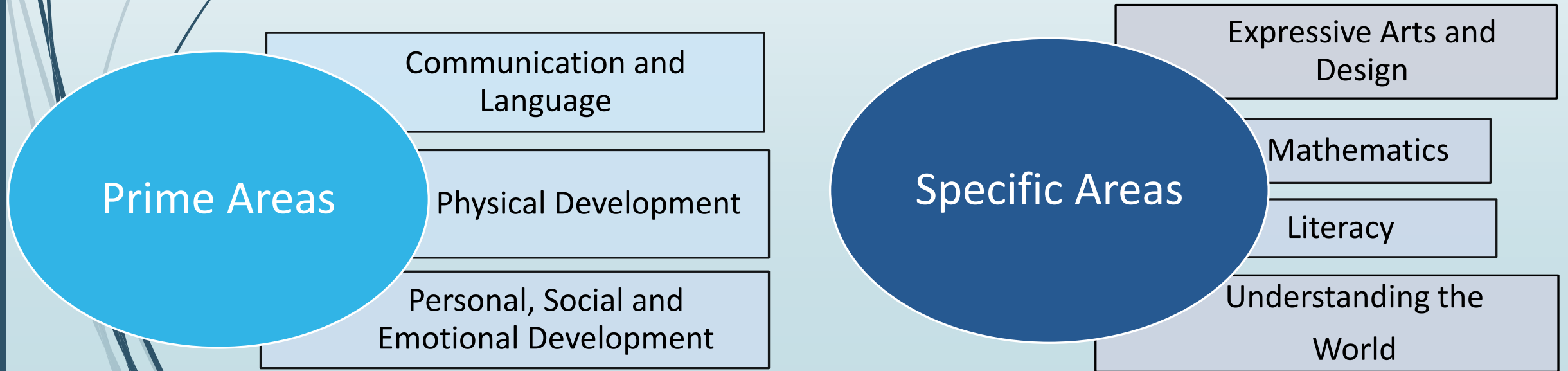
Mrs. Johnston

Please let Mrs Johnston know if your child has any additional needs prior to your child starting, so we can ensure required provision is in place.



# The Curriculum

**Our Early Years Curriculum is based on the principles of child development and the Early Years Framework. The Early Years Framework is organised into seven areas of learning. The children are assessed against all areas during the year.**





# Areas of Learning

	Areas of Learning and Development	Aspects
Prime Areas	Communication and Language	Listening, Attention and Understanding
		Speaking
	Personal, Social and Emotional Development	Self-Regulation
		Managing Self
		Building Relationships
	Physical Development	Gross Motor Skills
Fine Motor Skills		
Specific Areas	Literacy	Comprehension
		Word Reading
		Writing
	Mathematics	Number
		Numerical Patterns
	Understanding the World	Past and Present
		People, Cultures and Communities
		The Natural World
	Expressive Arts and Design	Creating with Materials
		Being Imaginative and Expressive

# School Readiness

**As a school we have produced a leaflet to help parents ensure that their children are ready for school.**

**Below are the main points...**



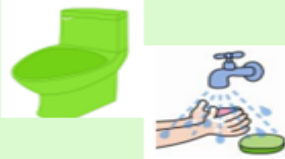
# School Readiness



## Deepdale Readiness

### Going to the toilet

I can go to the toilet on my own, and flush.



I can wash and dry my hands without any help.

### Eating

I can sit at a table.

I can use a knife and fork.

I can open my packed lunch on my own.



### Maths

I can join in with number rhymes and songs.

I enjoy practising counting objects.



### Getting dressed and undressed

I can button and unbutton my clothes.

I can put my own shoes and socks on.

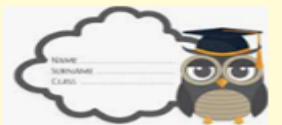
I can put my own coat on and use a zip.



### Literacy

I can recognise my own name.

I can hold a book and show an interest in stories.





# Starting School

## Timetable of events

Event	Date
Reception Induction Meeting	Monday 24 <sup>th</sup> or Tuesday 25 <sup>th</sup> June 2024 at 1:30pm
Open Day	Monday 1 <sup>st</sup> July 2024 at 9:30 – 11:30am or 1:15-2:45pm
'Meet the Teacher – Home Visit' Appointment Letters given out	Monday 1 <sup>st</sup> July 2024
Home Visits	Monday 2 <sup>nd</sup> September to Thursday 5 <sup>th</sup> September 2024
Reception Start Date 1	Friday 6 <sup>th</sup> September 2024
Reception Start Date 2	Monday 9 <sup>th</sup> September 2024
Reception Start Date 3	Tuesday 10 <sup>th</sup> September 2024
Reception Start Date 4	Wednesday 11 <sup>th</sup> September 2024



# Starting School

## Important Information

- ❖ All parents will receive a school Induction Pack which includes
  - the new class name
  - the teacher's names
  - the date your child starts school
  - the School Brochure
  - Information regarding the school Open Day
- ❖ Home visits will take place between Monday 2<sup>nd</sup> September and Thursday 7<sup>th</sup> September. Appointment letters for Home visits will be given out during the Open Day on Monday 1<sup>st</sup> July.
- ❖ When your child starts school, they will stay from 8:35am until 3:15pm. This includes lunch.





# School Uniforms

School uniforms are compulsory and an important part of belonging to the Deepdale community.



Cardigan



Polo Shirt



Grey Trousers



Grey skirt



PE Joggers



PE Polo Shirt



Grey Socks



Black PE Pumps



Black School Shoes

Embroidered uniforms can be purchased from the two stores below and plain uniforms can be purchased from other retailers.

Smart Schoolwear  
54 Lancaster Road  
Preston  
PR1 1DD

Bang Bang School Uniform  
91 Lancaster Rd  
Preston  
PR1 2QJ

# The School Day

Below is an example of a Reception timetable.

- ❖ Doors open at 8:35am.
- ❖ Learning starts at 8:45am
- ❖ Lunchtime is between 11:30  
and 12:30pm
- ❖ School finishes at 3:15pm


**Mornings**

Learning in the mornings will always be focused on:

**Phonics**



**Reading**



**Writing**




**Maths**



**Afternoons**

Learning in the afternoons will focus on other areas of learning such as:

**Expressive Arts**



**Knowledge and Understanding of the World**



**Continuous Provision:**

Children have access to all areas of learning, both indoors and outdoors, throughout the day.

# Outdoor Learning

Outdoor provision is vital for babies, toddlers and young children.



# Outdoor Learning

**A rich outdoor play space will offer your child:**

Space to be noisy, active and boisterous

Fresh air – allows more oxygen in the brain

Experience of different weathers and seasons

Direct contact with the natural world

Multi-sensory experiences

Risk and challenge and awareness of safety

Emotional and physical well-being

Natural light – essential for learning

Real experiences such as growing, digging, sweeping

Freedom to explore in ways that are not possible indoors

# Our new Outdoor Area

In June, we were very lucky as a school to be able to revamp our outside area.

At the Open Day, you will be able to have a closer look.

**Water Station**



**Potion Station**

**Construction Area**



# Our new Outdoor Area

In June, we were very lucky as a school to be able to revamp our outside area.

At the Open Day, you will be able to have a closer look.

**Road Track**




**Performance Stage**



**Climbing Ship**







AND AT THE END OF THE DAY,  
YOUR FEET SHOULD BE DIRTY,  
YOUR HAIR MESSY AND YOUR  
EYES SPARKLING.

: Shanti



# Equipment for the Outdoors

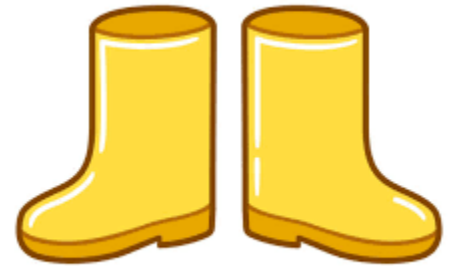
To be able to use the outdoors effectively, all children will require...

A warm,  
waterproof coat



Suitable footwear

Wellington Boots



Hat and Gloves



# Entrances and Exits

At Deepdale, each year group enter and exit the school playground through a numbered gate.

**Morning**

**Children in Reception will enter school via Entrance 2 – red door**



**Home Time**

**Children in Reception will exit school via Entrance 1 - playground**





# Entrances and Exits

- ❖ Every morning and afternoon the teachers will be on the playground to meet all of the children.
- ❖ The EYFS playground is set up every day for outdoor learning - with this in mind please could we ask that any younger children do not play with the equipment whilst waiting.
- ❖ **Named Adults:** All children must be collected by the adult identified on the children's induction records. We will not let the children go with any adult unless their name is on our records. This ensure your children are safe at all times.



# Lunchtime Arrangements

**Lunchtime is an important part of the school day where children have the opportunity to further develop their independence.**

## School Dinners



- All children from Reception to Year 2 are entitled to a free school meals.
- Parents can select a meal with their child at the beginning of every half-term.

## Packed Lunch



- A healthy lunch to be placed in a named bag or box.
- No glass bottles or fizzy drinks.



# Milk and Fruit

Having a carton of milk and a piece of fruit daily is a good source of energy which will support your child's ability to learn.

- ❖ A variety of fruit is provided throughout the week. There is **no cost**. The fruit is funded by the **National Lottery**.
- ❖ Milk costs **£19.35 per term** which is paid in advance. Milk is free until the term of the children's 5<sup>th</sup> birthday or if they are entitled to free school meals.
- ❖ All children will also require a water bottle which is clearly named. Water is available all day.



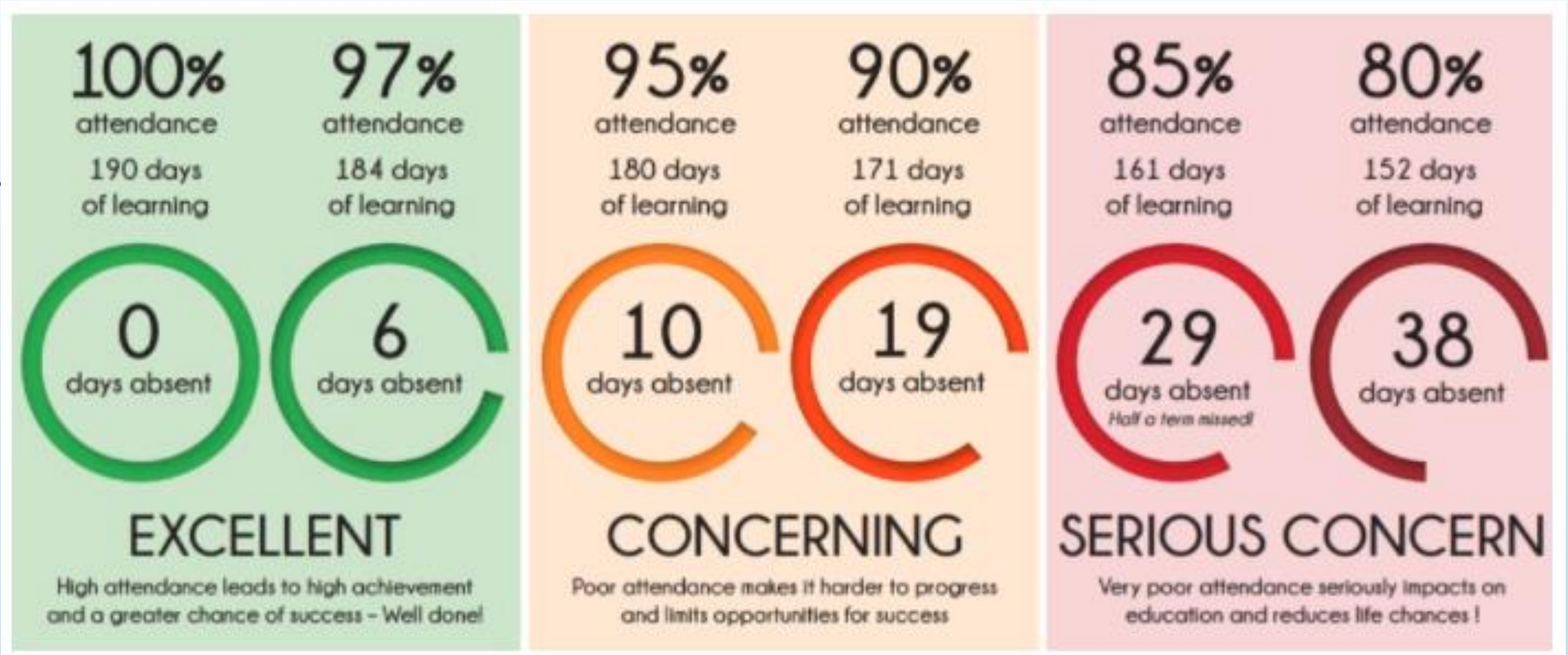
# Keeping your child safe

- ❖ Please ensure that school has the most up-to-date contact details – phone number, address and e-mail.
- ❖ Keep school informed of any changes to your child's health.
- ❖ If your child needs any medication in school, it must be prescribed from the doctors and parents must take it to the office and sign a permission form.



# Attendance

Coming to school and being on time helps every child to make progress in their learning.







# Communication

There are lots of ways that school keep in touch with parents on a daily/weekly basis.

All Apps are available to download.  
Please bring your mobile to the Open Day and we will be on hand to help.

## Communication



**Class Dojo**



**PA Connect**



**Parent Pay**



# School Website

During the year, please visit our fantastic school website where you will find out further information linked to the learning and events happening in Reception.

Click on  
'Curriculum' and  
then 'Reception'.



Click on the  
'Information for  
Parents' tab to find  
out about year group  
meetings, useful  
information and  
parents courses.

# How can you help your child?

## 4 & 5-year-olds: how you can help me with my learning

### Communication & Language

- Play games with me where I have to listen to your instructions such as a treasure hunt.
- Share a wide range of books and stories with me, including non-fiction and poetry.
- Talk out aloud, commenting on your actions and mine. This helps me hear clear, well-formed sentences.
- Encourage me to have lots of back and forth conversations with other children and adults.

### Personal, Social & Emotional Development

- Listen carefully to me. Encourage me to express my feelings using words.
- Help me solve problems by talking them through with me. This will help me keep going even when I find it really hard.

### Physical Development

- Give me time and space to be highly active and get out of breath every day.
- Encourage me to crawl on all fours, climb, pull myself up on a rope and hang on monkey bars. These activities will help me develop the strength I need for writing.
- Let me use one-handed tools like peelers and knives.



# How can you help your child?

## 4 & 5-year-olds: how you can help me with my learning

### Mathematics

- [Name small groups of things, this helps me to 'subitise'](#) (instantly seeing how many without counting) e.g. "There are 3 slices of pizza left."
- Ask me to count out a number of things from a group, e.g. "Could you get me 6 eggs?"
- Make number snap or bingo with numerals and pictures. Match the numerals with the right amount.
- Make patterns with objects, e.g. buttons or shells. Such as 'big, small, big...' Make a mistake and talk with me about how to fix it.

### Understanding the World

- Share photos and tell stories about my family, both past and present.
- Take me to places of worship and places of local importance in my community.
- Let me help you cook. Talk about changes such as 'melting' or 'boiling'

### Literacy

- Keep reading with me everyday. Share books that let me see people of different races, cultures, gender and religion.
- Play games where you give me an instruction like "Can you h-o-p?" I have to put the sounds of the word together.
- Let me make up stories – you could write them down for me and we could act them out.
- Make a photo book of our family or when we went to the park and let me write my own words in it.



### Expressive Arts & Design

- Sing and dance with me when we hear our favourite songs. Encourage me to make up my own routine.
- Give me string, scissors, glue, sticky tape and boxes to make a model.



# Open Day

Please bring your child to our Open Day on Monday 1<sup>st</sup> July and spend some time getting to know everybody.

  
**DEEPDALE COMMUNITY  
PRIMARY SCHOOL**

*Open Day*

▼  
**MONDAY  
1<sup>ST</sup> JULY  
2024**


9:30AM  
-  
11:30 AM  
OR  
▶ 1:15:PM  
-  
2:45PM

COME FOR AS LONG OR SHORT A  
TIME AS YOU WISH AND MEET YOU  
CHILD'S TEACHER FOR SEPTEMBER

# The First Day



The First Day We gave you a little wink and smile,  
As you entered our school today.  
For we know how hard it is to leave  
And know your child must stay.  
You've been with him for years now  
And have been a loving guide.  
But now the time has come  
To leave him by our side.  
Just know that as you walk away  
And tears down your cheeks may flow.  
We'll love him as we would our own.  
And help him learn and grow.  
So please put your mind at ease  
And cry those tears no more.  
For we will love him and take him in.  
When you leave him at our door.

A dark grey arrow points to the right from the left edge of the slide. Below it, several thin, light blue lines curve downwards and to the left, creating a decorative border on the left side of the slide.

**We are all looking forward to  
meeting your children very  
soon.**

**As a parent you will all have lots of questions that you wish to ask us about our school and information to tell us about your children.**

**Please feel free to contact myself through the school office or during Open Day.**

**We will always be happy to help.**