



Deepdale Community Primary School

Nursery Induction Meeting
June 2023.

Welcome

We are proud to welcome you to Deepdale Community Primary School

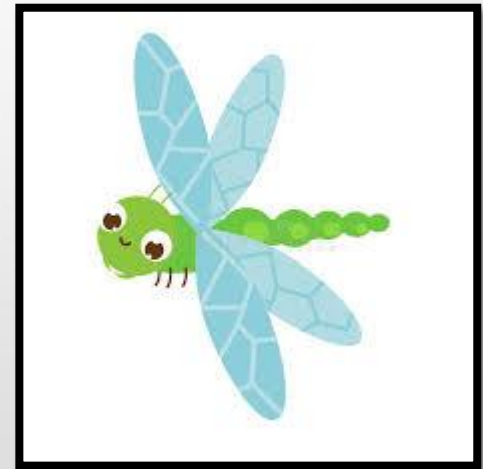
- We are a happy, vibrant and successful school offering Early Years and Primary education to children aged 3-11 years.
- The school is at the heart of the community.
We are proud of our cultural diversity-it enhances and enriches our school.
- Our school is a special place to learn where children are happy, friendly and they achieve well.



The Team

Mrs Pollard
Deputy
Headteacher &
EYFS lead

Mrs Usher
Mrs Patel



Starting Nursery

Timetable of events

Event	Date
Nursery Induction Meeting	Friday 16 th June. 9:30 am.
Open Day	Monday 3 rd July 9:30 – 11:30am or 1:15-3:00pm 2023
'Meet the Teacher' Appointment Letter	Monday 3 rd July 2023
Home Visits	Monday 4 th September to Thursday 7 th September 2023
Nursery Start Date 1	Friday 8 th September 2023
Nursery Start Date 2	Tuesday 12 th September 2023
Nursery Start Date 3	Friday 15 th September 2023
Nursery Start Date 4	Tuesday 19 th September 2023

Starting Nursery

Important Information



- All parents will receive a school Induction Pack which includes
 - ❖ The new class
 - ❖ The teacher names
 - ❖ The date your child starts school
 - ❖ The school Brochure
 - ❖ Information regarding the school Open Day
- Home visits will take place between Monday 4th September and Thursday 7th September. Appointment letters for Home visits will be given out during the Open Day on Monday 3rd July.
- When your starts Nursery they will stay for 1 hour on the first day, 2 hours on the second day and the full three hours on the third day.
- Extra sessions, if available, are charged at £6.00 per hour.

School Uniforms

Uniforms are compulsory and an important part of belonging to Deepdale Community Primary.



Cardigan



Polo Shirt



Grey Trousers



Grey skirt



PE Joggers



PE Polo Shirt



Grey Socks



Black PE Pumps

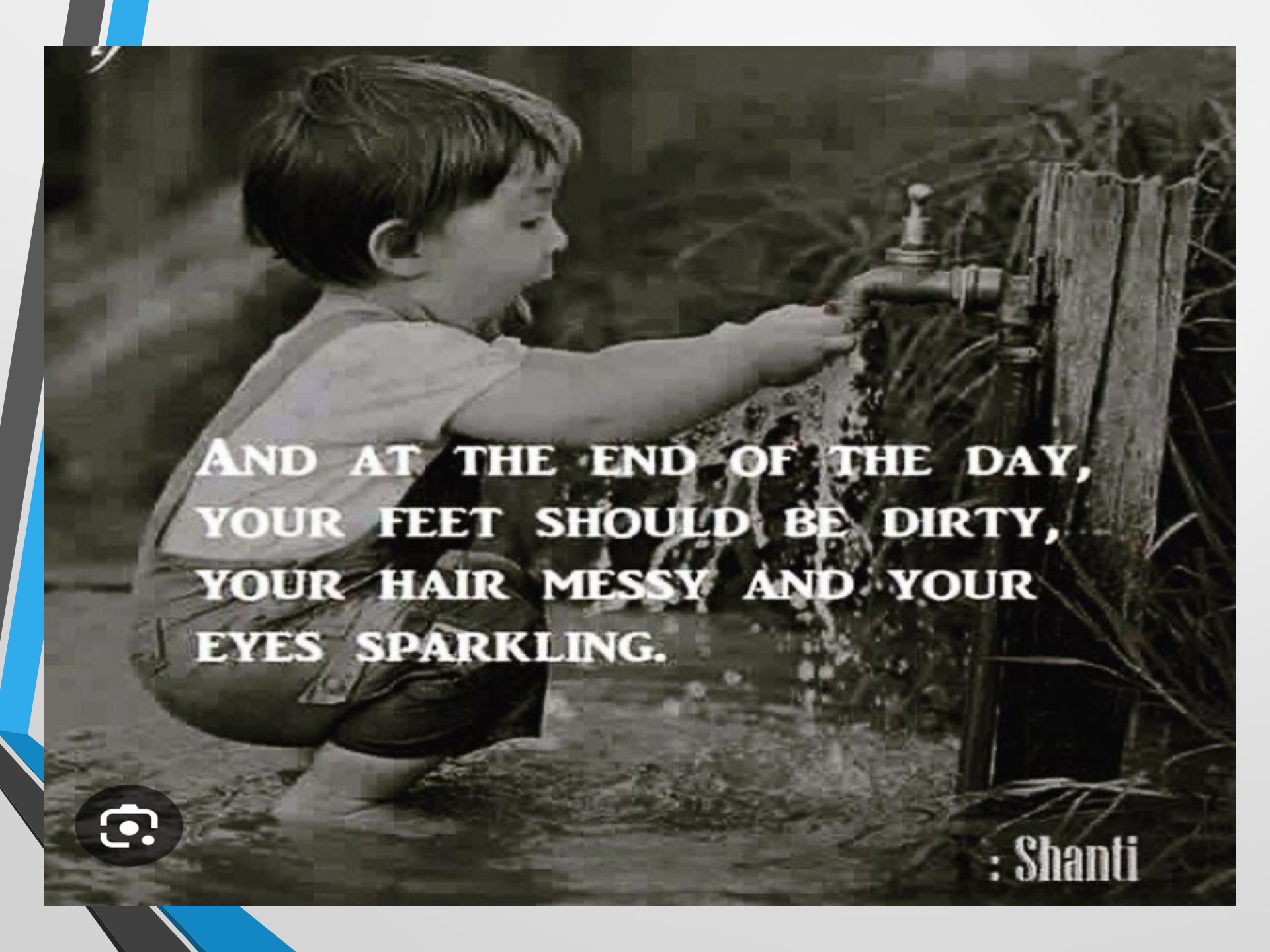


Black School Shoes

Embroidered uniforms can be purchased from the two stores below and plain uniforms can be purchased from other retailers.

Smart Schoolwear
54 Lancaster Road
Preston
PR1 1DD

Bang Bang School
Uniform
91 Lancaster Rd
Preston
PR1 2QJ



**AND AT THE END OF THE DAY,
YOUR FEET SHOULD BE DIRTY,
YOUR HAIR MESSY AND YOUR
EYES SPARKLING.**

: Shanti



Entrances and Exits

At Deepdale, each year group enter and exit the school playground through a numbered gate.

- All parents and children will use **GATE 1** on Deepdale Road.
- At the beginning or end of every session the teacher or teaching assistant will be available to discuss anything about your child with you.
- The EYFS playground is set up every day for outdoor learning-with this in mind please could we ask the children do not play with the equipment whilst waiting.

The Nursery Session

Below is an example of the Nursery timetable.

- Doors open at 8.30 am or 12.30pm.
- Learning starts at 8.30 am or 12.30 pm. There is a phonic session every day and a weekly PE session. Other learning takes place inside, outside, individually and in small or larger groups.
- There is a snack time built into the session.
- Session finishes at 11.30am or 3.30pm



Snack time



Having a carton of milk and a piece of fruit daily is a good source of energy which will support your child's ability to learn.

- A variety of fruit is provided throughout the week as well as a carton of milk. There is **no cost**.
- All children will also require a water bottle which is clearly named. Water is available throughout the session.

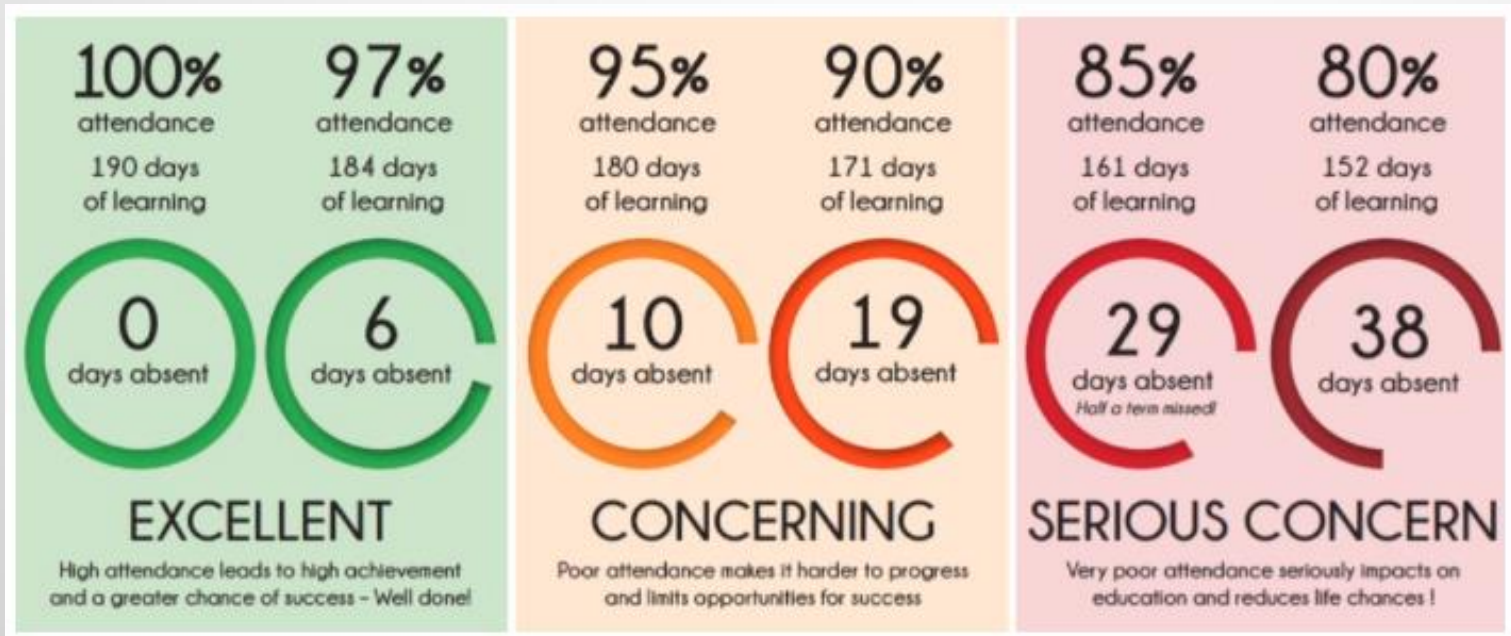
Keeping your child safe

- Please ensure the school has the most up-to-date contact details- phone number, address and email.
- Keep school informed of any changes to your child's health.
- If your child needs medication in school, it must be prescribed from the doctor and parents must take it to the school office and sign a permission form.
- If you need another person to collect your child, you must inform the Nursery staff or the school office.
- Pushchairs, if used, cannot be left at school they must be taken home and brought back.
- If you are still toilet training, we need changes of clothes in a named bag.



Attendance

Coming to Nursery and being on time helps every child to make progress in their learning.



Communication

There are lots of ways that school keep in touch with parents on a daily/weekly basis.

All Apps are available to download.
Please bring your mobile to the Open Day and we will be on hand to help.

Communication



**Class
Dojo**



**PA
Connect**



**Parent
Pay**

School Website

During the year, please visit our fantastic school website where you will find further information linked to the learning and events happening in Nursery.

<https://www.deepdalecommunityprimary.co.uk/>

Click on the 'Our Learning' and then click 'Our Curriculum'. Follow the Nursery logo



Click on the 'Information for Parents' tab to find out about year group meetings, useful information and parent's courses and events.

Nursery Ready

How can you help your child to be 'nursery ready'?

Can your child do these things by themselves?

- Wash their hands.
- Find their own coat, bag or water bottle.
- Tell an adult they need the toilet.
- Walk to Nursery holding hands with my parent.



Open Day

Please bring your child to our Open Day on Monday 3rd July and spend some time getting to know everybody.

A colorful poster for a Nursery Open Day. The background is yellow with a pattern of red, blue, and white confetti. At the bottom, there is a row of colorful pencils in yellow, blue, red, and pink. The text is centered on a white background.

NURSERY

OPEN DAY

Monday 3rd July
9:30am-11:30am
1:15pm-3:00pm

Meet your child's teacher

Spend time in the classroom

Ask about questions you might have

Receive your 'Meet the Teacher'
Appointment date and time

Thank you.

We can't wait to see you in September.

