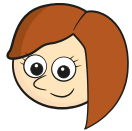


1 Rosie and Amir are sharing some sweets.



a) Draw lines to share the sweets equally.

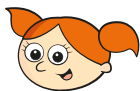
b) How many sweets does each child get?

Each child gets sweets.

8 sweets shared equally between 2 is



2 Five children share some grapes.



a) Draw lines to share the grapes equally.

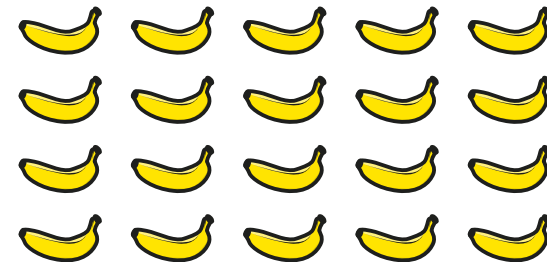


b) How many grapes does each child get?

Each child gets grapes.

10 grapes shared equally between 5 is

3 Ron needs to share 20 bananas between 5 boxes.



How many bananas will there be in each box?

20 bananas shared between 5 boxes is

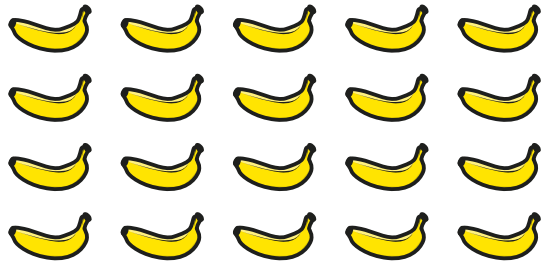
There will be bananas in each box.

b) How many grapes does each child get?

Each child gets grapes.

10 grapes shared equally between 5 is

3 Ron needs to share 20 bananas between 5 boxes.

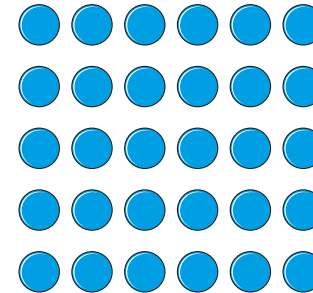


How many bananas will there be in each box?

20 bananas shared between 5 boxes is

There will be bananas in each box.

4 Use 30 counters.



a) Share the counters between 2 friends.

How many counters does each friend get?

b) Share the counters between 5 friends.

How many counters does each friend get?

c) Share the counters between 10 friends.

How many counters does each friend get?