

1 Write $<$, $>$ or $=$ to compare the durations of time.

a) 50 minutes 1 hour

b) quarter of an hour 15 minutes

c) half an hour 25 minutes

2 Write the times in order from shortest to longest.

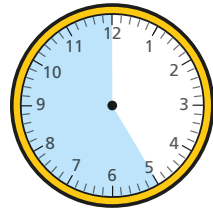
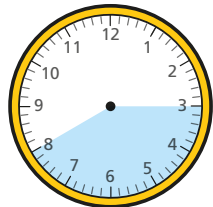
90 minutes

one hour

45 minutes

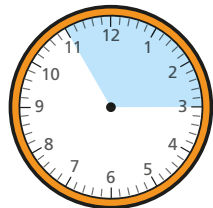
3 Which durations of time are longer than half an hour?

35 minutes

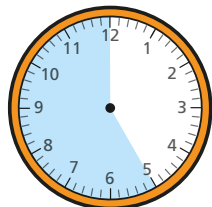


three-quarters of an hour

4 Which durations of time are shorter than half an hour?



25 minutes

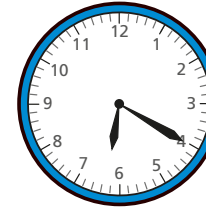


three-quarters of an hour

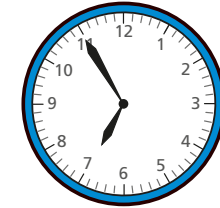
5 The clocks show the times that Ron and Teddy started and finished tidying their rooms.



Ron



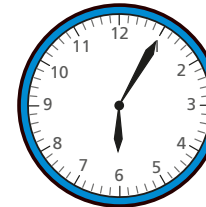
started



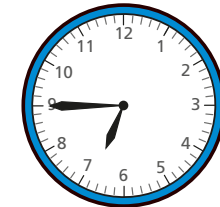
finished



Teddy



started



finished

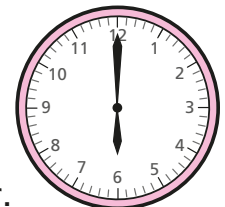
Who tidied their room in the shortest amount of time?

How did you work this out?


6 Aisha and Kim both started their homework at 6 o'clock.

Aisha finished her homework at 25 past 6
Kim's homework took her 10 minutes longer.

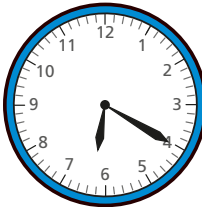
What time did Kim finish her homework?



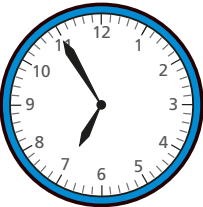
5 The clocks show the times that Ron and Teddy started and finished tidying their rooms.




Ron



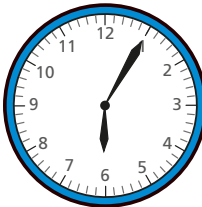
started



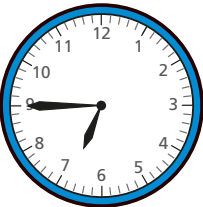
finished



Teddy



started



finished

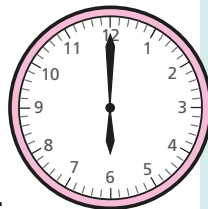
Who tidied their room in the shortest amount of time?

How did you work this out?

6 Aisha and Kim both started their homework at 6 o'clock.

Aisha finished her homework at 25 past 6
Kim's homework took her 10 minutes longer.

What time did Kim finish her homework?



7 The children in Class 2 ran around the edge of the school field.

The table shows their start and finish times.

Name	Start time	Finish time
Tommy	10 past 2	half past 2
Amir	quarter past 2	half past 2
Dora	20 past 2	quarter to 3
Rosie	20 past 2	20 to 3

Use the information in the table to complete the sentences.

- _____ took the longest time.
- _____ took the shortest time.
- Tommy ran faster than _____.
-



Tommy

Amir and I took the same length of time because we finished together.

Is Tommy correct?

How do you know?