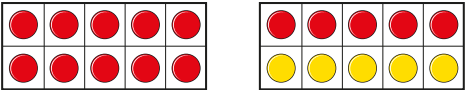
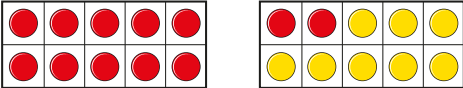
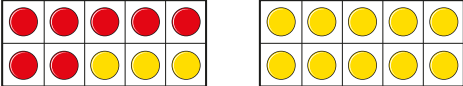


- 1 What number bonds to 20 are represented?
The first one has been done for you.

a)  $15 + 5 = 20$

b) 

c) 

- d) How many other number bonds to 20 can you make using counters and ten frames?



- 2 Complete the fact family.

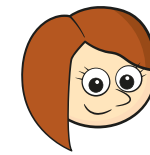
a) $15 + 2 = 17$ $17 - 15 = \square$

$17 = 15 + 2$ $\square = \square - \square$

$2 + 15 = \square$ $\square - \square = \square$

$\square = \square + \square$ $\square = \square - \square$

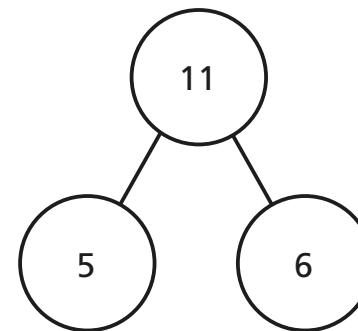
b)



$2 - 17 = 15$ should be in the fact family.

Explain why Rosie is wrong.

- 3 Complete the number sentences for the part-whole model.



$\square + \square = \square$

$\square - \square = \square$

$\square + \square = \square$

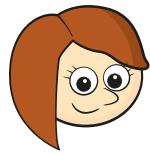
$\square - \square = \square$

Are there any other number sentences in this fact family?

Talk about it with a partner.



b)

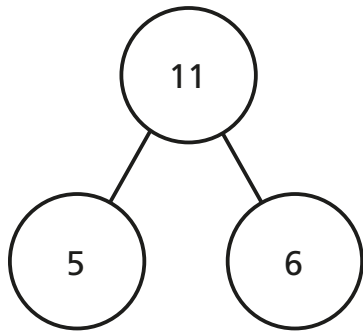


2 + 17 = 15 should be in the fact family.

Explain why Rosie is wrong.



- 3 Complete the number sentences for the part-whole model.



$$\square + \square = \square$$

$$\square - \square = \square$$

$$\square + \square = \square$$

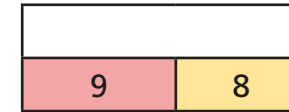
$$\square - \square = \square$$

Are there any other number sentences in this fact family?

Talk about it with a partner.



- 4 There are 9 boys and 8 girls in a class. Complete the bar model to represent this.



Write the fact family for the bar model.

- 5 Which calculations are incorrect?

$$3 + 7 = 10$$

$$10 = 3 + 7$$

$$7 + 3 = 10$$

$$10 = 7 + 3$$

$$10 - 7 = 3$$

$$7 - 3 = 10$$

$$3 - 10 = 7$$

$$7 = 10 - 3$$

Explain any mistakes that have been made.



- 6 Here are some number cards.



Choose three number cards to complete the number sentence.

Write the fact family for this calculation.

Compare answers with a partner.

