



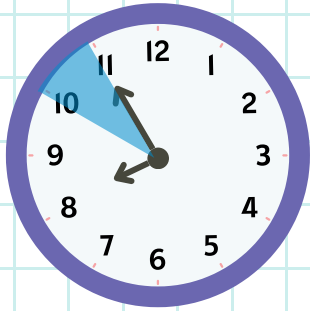
# LATES



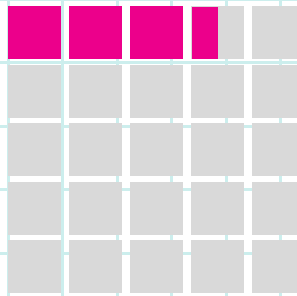
Did you know that in **one school year...**

If your child is late every day by...

Your child would have lost approximately...



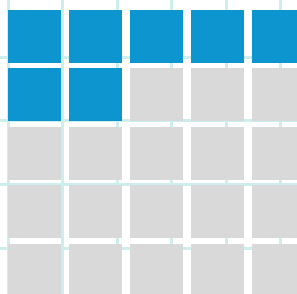
**5**  
Minutes



**3.5**  
days from school



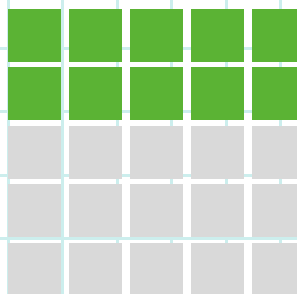
**10**  
Minutes



**7**  
days from school



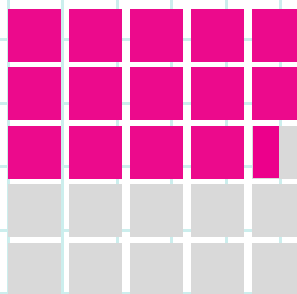
**15**  
Minutes



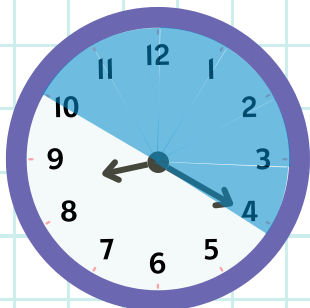
**10**  
days from school



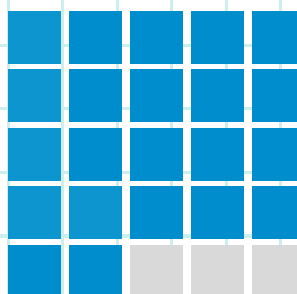
**20**  
Minutes



**14.5**  
days from school



**30**  
Minutes



**22**  
days from school

**Gates open at 8:40am,  
learning commences at 8:50am.**