

Population

What you've learnt already

- People choose to live near volcanoes (Y3).
- People choose to live near rivers (Y4).
- Life is different in different biomes (Y3, 4 and 5).
- Climate change is affected by increasing population (Y5).

Choices

Why do people migrate?

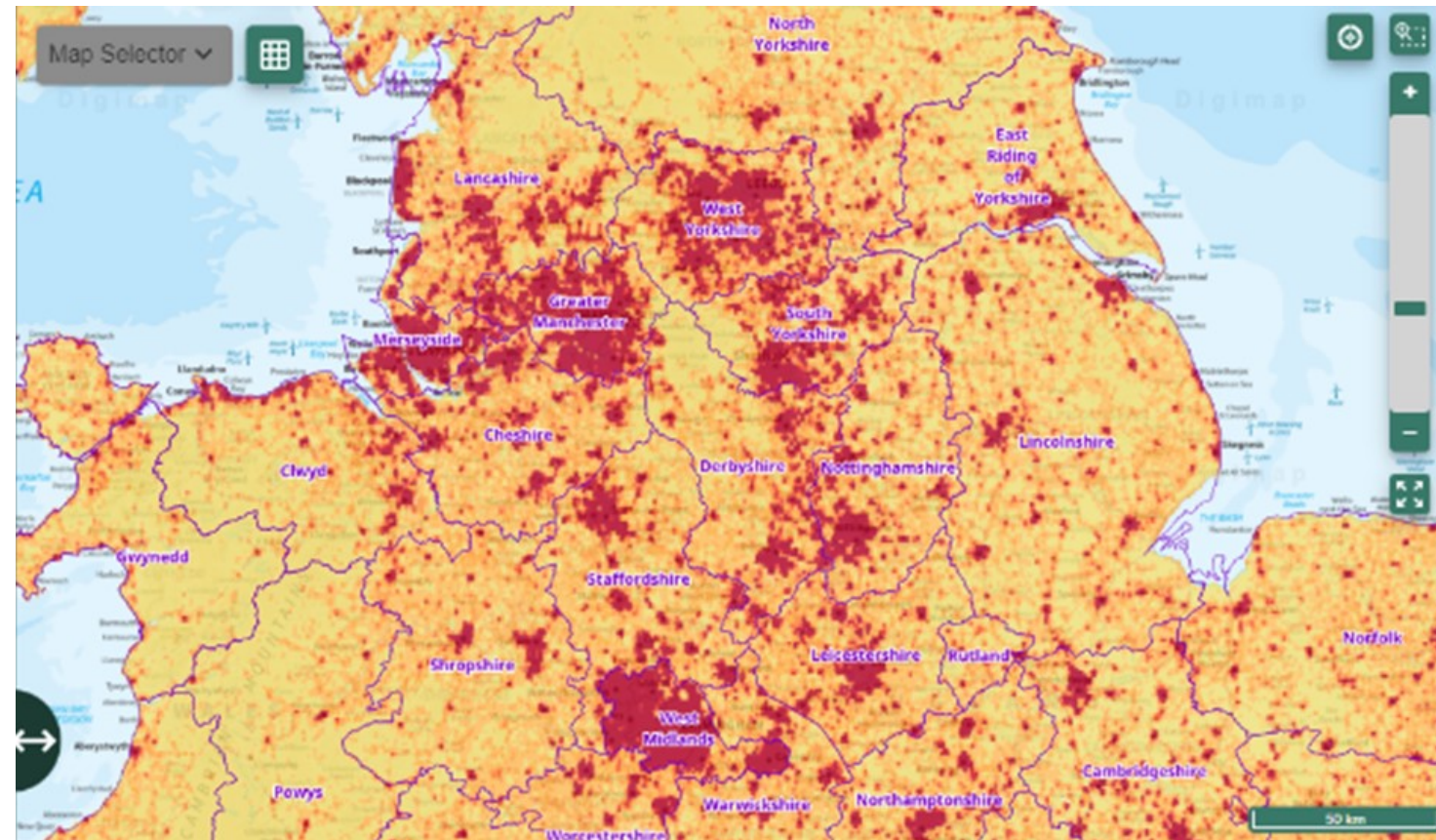
How can we help our environment?

How will where we choose to live effect our lives?

Key Vocabulary

Distribution	the way in which something is shared out among a group or spread over an area
Influence	to have an effect on the character, development, or behaviour of someone or something
densely populated	Somewhere containing a lot of people, things, plants, etc. with little space between them
sparsely populated	an area that contains few people
amenities	something intended to make life more pleasant or comfortable for people
locality	an area or neighbourhood
migrate	Move from one place to another
poverty	the state of being extremely poor
economic	relating to trade, industry, or money
environmental	relating to the environment in which people, animals, and plants live

Maps



Lesson Sequence

L1	Explore the distribution of people globally
L2	Investigate patterns in the UK's population
L3	Explain why people migrate
L4	Investigate how population impacts pollution
L5	Investigate how population im-

Human Features

- Comparison of population in the UK and across the world
- Life opportunities –reasons for migration
- Increased population—how it effects pollution
- Population density across the world

Physical Features

- Natural disasters—reason for migration
- Climate—reason for migration
- Environment—reason for migration

UNIT

What is population?	Where has the most noise pollution in our local area?	
What are pull factors of leaving a place?	What are push factors of leaving a place?	Why do cities have a larger population than rural places?
Which countries are the most sparsely populated?	Which countries are the most densely populated?	What different types of pollution are there?
How does population impact pollution?	Why is our population predicted to increase?	Why do people migrate?

One Point	Two Points	Three Points	Four Points
-----------	------------	--------------	-------------