

Alpha 23



Have you ever wanted to go on an incredible planet? Well today you can be an expert about Alpha 23! Are you ready to find out about this amazing planet?

It takes approximately 2 days to orbit its Star. Scientists think that it is 3.23 million miles away from its star. Alpha 23 is located in the Fluffle Galaxy. It is the only planet in the Galaxy expect for the two moons.

Appearance and Terrain

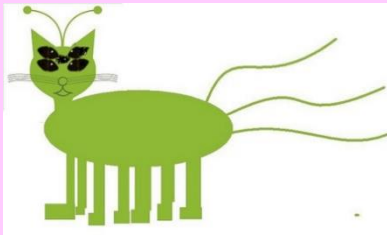
Unlike Jupiter, Alpha 23 has a hot and a cold side but no one should forget the middle which is the place where you can live. First, let's start on the chilly side. On the floor, there is snow, which is white as a cotton bud. In the sky, there are glass clouds, and the crystal, clear ice lakes. Now for the roasting side. All around your feet, is blistering sand (which is 250°C) that burns your feet. On the side, are



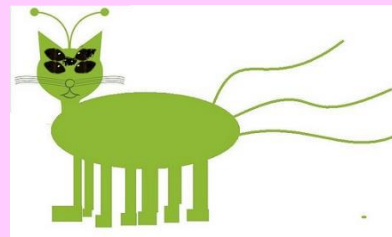
mammoth rocks, which are made of a special mineral called Bauxite. In the middle is a volcano, what dripples out fiery, hot lava but also there is a lava lake which is a crimson-red. The shape of the planet is not an egg shape-it's a sphere, which most are expect Wasp.

Climate and Atmosphere

Although it is hot, it is not hot it is boiling it is 500,000,000°c which is hotter than the sun! On the other hand, it is 300,000,000°f but it rains acid. In the middle, is the same temperature as Earth and it has rain made from water not acid.



Life on planet



Life on planet, could be weird but this one is the weirdest of them all. When you hear about this, you don't want to live here there are cats called (blobs). They eat-luscious, emerald green goo leaves and goo trees. Their houses are made from goo but it's green and sloppy so they eat their houses then make a new one. They eat other blobs because they are so weird.



Interesting Facts

- Lucy Alpha first discovered the planet when she was gazing at the night sky on 12th January 1830.
- It is 2.5 million miles away from the Earth.
- A space craft called Apple 23 was sent to Alpha 23 in 1830 and will be there for 2030.

By Scarlett C