

Aim for the evening:

To help you to understand how to support your child to be successful this year.



Run with Perseverance



Aptitude

Keep noticing what you are good at

+



Attitude

Build your learning habits through positive routines

+



Good Choices

Engage fully in a wide range of learning opportunities



Personal Goals

Challenge yourself with a resilient Plan A/B/C approach



Good Gifts Used in Service

Don't stay in a bad place

Unique Value in Community

Life in All its Fullness

Leading with courage and compassion



Ealing Fields Learning Culture – Routines which support habits

I come fully equipped

I am polite and helpful

I wear my uniform perfectly

I am focused at all times

I walk to my lessons with purpose

I care about the quality of work in my book

I complete lesson prep for every lesson, every day

I am reflective about myself and my learning

I engage with the wider school and community

Leading with courage and compassion



Whole school changes in 2025-6

1. Shorter school day
2. Increased roll
3. Some changes to curriculum offer in the lower school
4. Some mixed ability teaching in the lower school
5. Alignment is greater than ever





Students



Pastoral Support



Parents



Tutors



Curriculum Planners



Teachers

Prep – It takes a village

Leading with courage and compassion



GCSE Successes - Progress

	CAT 8	Maths	English	EBacc	Open
Ealing Fields	+1.36	+1.12	+1.41	+1.56	+1.27
National Rank	1	1	1	1	1

68% met or exceeded Trust Targets

Year 11	Boys	75%
Year 11	Girls	74%

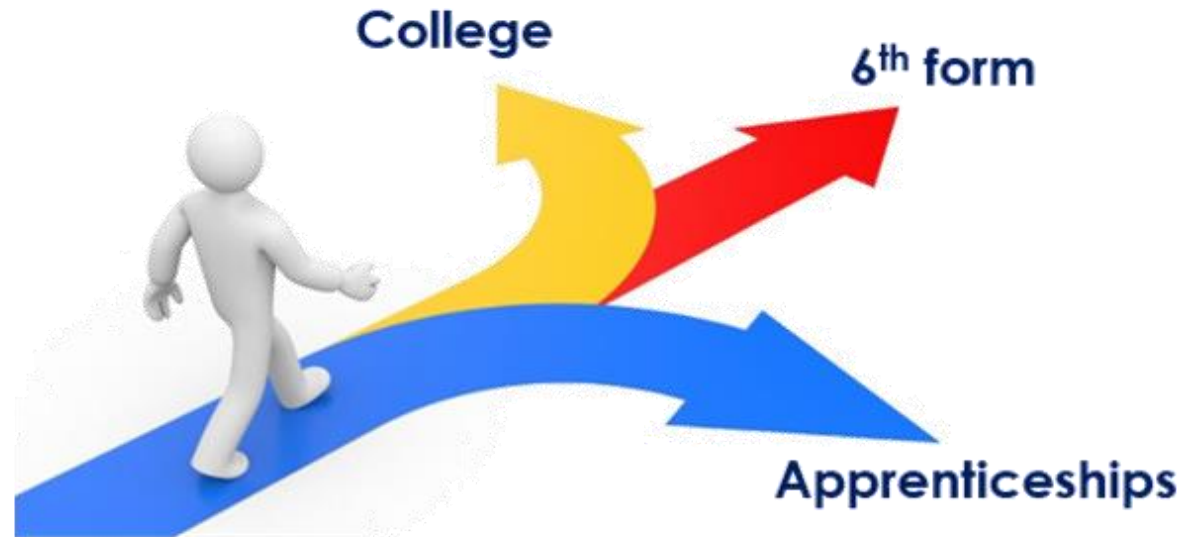
FFT5 Target for Grade 9s	Actual No. of Grade 9s
44	233

Borough Comparisons	5+ in Maths and English	5+ EBACC	Ave Att8 Score
Ealing Fields	80.3% (2 nd)	80.3% (1 st)	66.1 (2 nd)
Ealing Average	58.5%	32.8%	53.1

Leading with courage and compassion





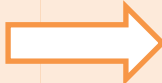

What is your next chapter going to be?



Leading with courage and compassion



GCSE personalised curriculum pathways

Requirement		Post-16 options
Grades 4-5 in key EBAC GCSE courses		Vocational college courses
Achieve at least a grade 6 or 7 in chosen A-level subjects		A level courses
At least grade 5 in others		
Achieve grades 7-9 in all GCSEs		University courses
Pass all A-levels		
Achieve grades 8-9 in all GCSEs and A/A* A-levels		Russell Group universities





Twyford and William Perkin General Entry Requirements



8 GCSE passes including Maths and English with a 5 or better





Twyford
C of E
High School

Art
Biology
Business studies
Chemistry
Computing
Drama
Economics
English language
English literature
Film studies
French
Further maths
Geography
German

Graphics
History
Maths
Music technology
Photography
Physical education
Physics
Politics
Psychology
Religious education
Sociology
Spanish



William Perkin
C of E
High School





Twyford
C of E
High School

Art
Biology

Chemistry
Computing
Drama

French
Further maths

German

Graphics

Maths
Music technology
Photography
Physical education
Physics

Spanish



William Perkin
C of E
High School

**options if you don't achieve at least a grade 6 in Eng lit /
lang**

Leading with courage and compassion



Ada Lovelace T-levels

- Digital
- Laboratory Science
- Accounting



Entrance Criteria

8 x GCSEs Grade 5 and above and including Maths and English

Laboratory science - Grade 6 or above in science

Digital – Grade 6 computer science OR demonstrate an interest in the subject.

Accounting – Grade 6 in Maths



Local post-16 options and their entry requirements

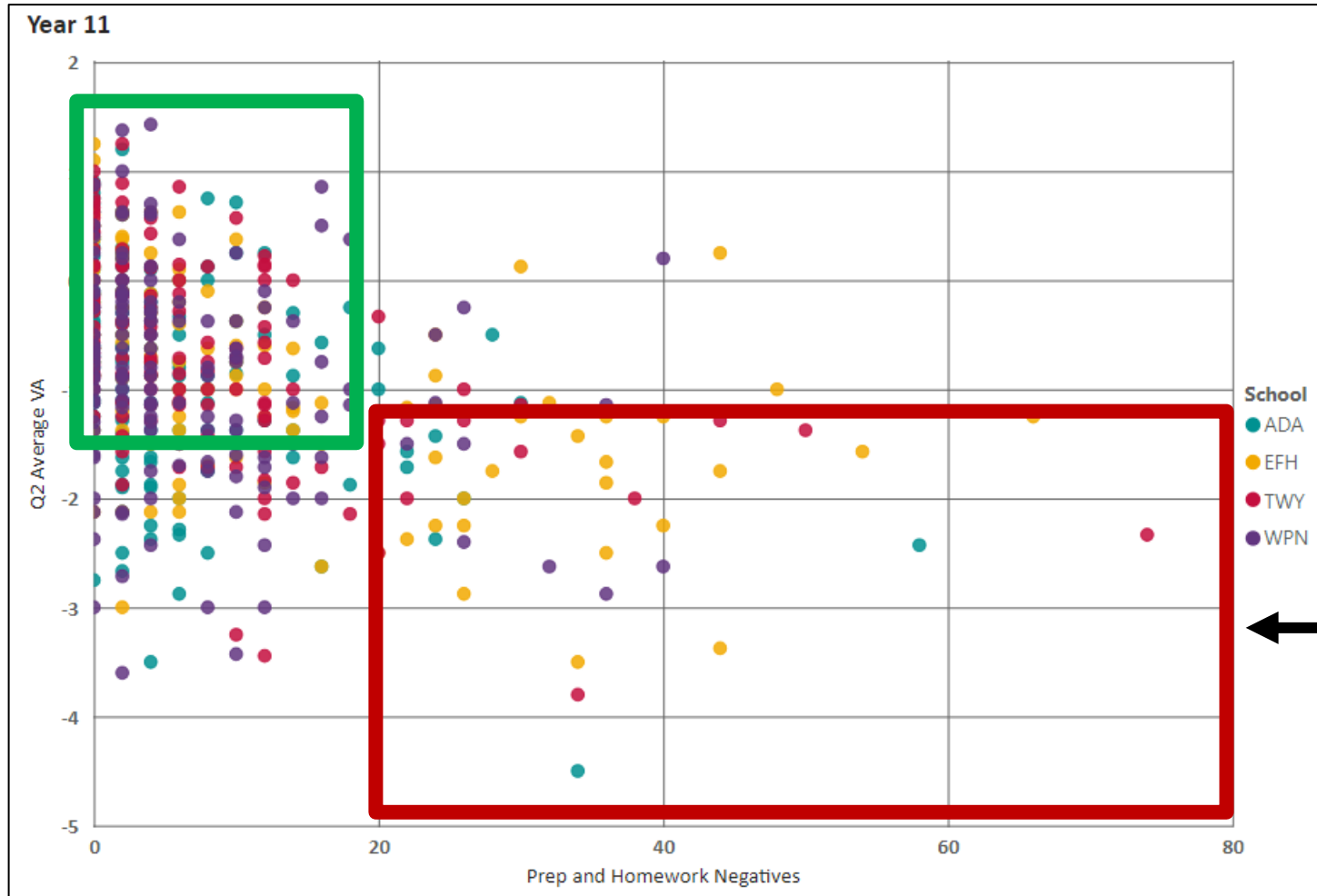
Where?	Grades needed	Aim
Cardinal Wiseman: Accelerated pathway	5 x level 9-7 GCSE passes including English and Maths	Complete 4 A levels
Twyford/William Perkin	8 x level 9-5 GCSE passes including English and Maths (grade 7 required in chosen subject)	Complete 3 A levels
Elthorne extended pathway	Grade 6 in English and Maths + 3 other grade 6 qualification	Complete 4 A levels
Cardinal Wiseman: Academic pathway	6 x level 9-4 GCSE passes including grade 4 in English Lang	Complete 3 A levels
Elthorne: Academic pathway	Grade 5 in English and Maths + 3 other grade 6 qualifications (grade 6 required in chosen subject)	Complete 3 A levels
Elthorne: Technical pathway	5 GCSES at Grade 9-4 including English and Maths	L3 extended diploma and possibly an A level
Cardinal Wiseman: Technical pathway	4 x level 9-4 GCSE including English language	BTEC and possibly an A level or 2

Richmond College	An average point score of 6.5 or above - depends on subject with specific GCSE requirements.	4 A levels
Richmond College	An average point score of 5 to 6.5 - depends on subject with specific GCSE requirements.	3 A levels
Uxbridge College	Grade 4 in English and Maths + course requirements	Level 3 diploma
Uxbridge College	Grade 3 in English and Maths	Level 2 diploma
West London College/ West Thames College	Entry requirements tend to be 4-5 or more GCSEs at grade 4 or above (or completion of the relevant level 2 course).	Level 3 diploma (BTEC)
West London College / West Thames College	Requirements tend to be 4 or more GCSEs at grade 3 or above.	Level 2 diploma (BTEC)
West London College/ West Thames College/ Uxbridge	May need 4c GCSES at grade 2 or above including English and Maths	Level 1 diploma



Year 11 Students 2024-25

Number of prep/HW negatives plotted against GCSE mock exam progress



Of the students with the most negatives for prep, the majority are under target



Assessment

Q1	6 th – 10 th October
Q2	4 th – 10 th December
Q3	2 nd – 6 th March
Q4	15 th – 19 th June

- All subjects assess and grade, but perhaps on a restricted range of content.
- **Y10 Q4 grades affect predicted grades in Y11 – these are used for 6th form / college applications!**



Your child's form tutor is your first point of contact:

10 Byron Tutor	Mr Reci	Jreci@ealingfields.org.uk
10 Chambers Tutor	Mr Gargani	Jgargani@ealingfields.org.uk
10 McQueen Tutors	Ms Lam	Jlam@ealingfields.org.uk
10 Perceval Tutor	Ms Sivalogan	Rsivalogan@ealingfields.org.uk
10 Springfield Tutor	Ms Holland	Mhollandfredrick@ealingfields.org.uk
10 Yeats Tutor	Ms Gelderblom	Agelderblom@ealingfields.org.uk

My email = jknopp@ealingfields.org.uk



Key dates for the term ahead

Date	Event
Monday 15 th September	Photography Day (get your hair done!)
Monday 22 nd September	<u>Meet the Tutor Day</u>
Thursday 2 nd October	Early Closure – Open Evening
Friday 3 rd October	Inset day - Staff Training
Friday 24 th October	Inset day – staff training



The year ahead

PSHE workshops

Cover a range of issues including:

- Mental health: self image
 - Eating disorders
 - Gender identity
- Safer sex
 - Consent
 - Pregnancy
- Finance
 - Bank accounts
 - Budgeting your wages



Leading with courage and compassion



The year ahead

100% of students participating in Wider Learning

Year 10	Monday	Tuesday	Wednesday	Thursday	Friday
Morning (7:30 to 8:15am)	<ul style="list-style-type: none"> Athletics- Sports Hall 	<ul style="list-style-type: none"> Girls Football- Sports Hall 	<ul style="list-style-type: none"> Squad trampolining- Sports Hall 	<ul style="list-style-type: none"> Handball with West London Eagles- Sports Hall 	<ul style="list-style-type: none"> GCSE PE Netball- Sports Hall
Morning (8:15 to 9am)	<ul style="list-style-type: none"> Chamber choir- Drama studio 	<ul style="list-style-type: none"> Wind Band- Library 			<ul style="list-style-type: none"> String Orchestra- Library
Lunch	<ul style="list-style-type: none"> Trampolining- Sports Hall 	<ul style="list-style-type: none"> Debating Club- L102 Jazz Guitar Ensemble- MP02 Trampolining- Sports Hall 	<ul style="list-style-type: none"> Trampolining- Sports Hall 	<ul style="list-style-type: none"> Football- Sports Hall Table talk- LG08 Careers Club- Drama studio Duke of Edinburgh – LG07 	<ul style="list-style-type: none"> Inspire Programme (Invite only) –L102 Promethean- L105 Theatre Club- Drama studio Samba Band-L114
The Library is open every lunch time.					
After school (3:10 to 4:00pm) Sports clubs 3:15 to 4:15pm)	<ul style="list-style-type: none"> Trampolining- Sports Hall GCSE PE revision club- room tbc Financial Futures –L205 French Club- L203 School Production- PC 	<ul style="list-style-type: none"> Trampolining- Sports Hall Netball- Netball courts 	<ul style="list-style-type: none"> Science Club – L206 Languages Quizlet Club- L105 Athletics – Sports Hall Squad netball (invite only) – Netball courts Boys Rugby – Blondin Park Girls Rugby- Blondin Park School Production- Drama studio Ealing Fields Orchestra- PC 	<ul style="list-style-type: none"> Boys Football- Sports Hall 	<ul style="list-style-type: none"> Paddle Sports at London Kayak School- Sign up required. Rowing at Brentford Boat Club- Sign up required.
The Library is open Monday to Thursday after school. You can borrow books and enjoy a quiet space to read.					

Coming Soon!
Keep an eye out for information about English A Level Taster Club.



The year ahead



The Award is split into two sections:

- Weekly commitments where students complete an hour of skills, sports and volunteering
- A two day expedition hike, with overnight camping

Dates

- A weekend in January/February for training
- A day in March/April to practice
- A weekend in May for the real expedition



The year ahead

Work Experience Programme **Monday 6th – Friday 10th July 2026**

- Prepare a fantastic CV and covering letter
- Network with family, friends and use the contacts we have built up at Ealing Fields
- Contact employers directly to ask if they accept Year 10 Work Experience students
- Send off lots of applications as the competition is tough!
- **Target is to have secured a work experience placement by Christmas – the race is on for the first form to secure all their placements!!!**

Term 1

CV writing
Preparing for placement
Initial contact with employer

Term 2

Securing your placement
Completing paperwork
Returning paperwork

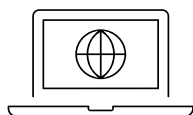
Term 3

Work Experience briefing
Work Experience
Feedback from employer



Online Mentoring - Explore STEM Futures

- ~11 week text-based mentoring programme, in partnership with the Brightside Trust, open to students aged **13–19**.
- Receive **one to one mentoring** from a **STEM professional**, giving insights in different careers and possible next steps for you.



Visit the website to find out more

www.stem.org.uk/secondary/careers/mentoring



Contact us with any questions

students@stem.org.uk

Register: by 19th September



Start: 29th September



Finish: 12th December

Online Mentoring: Student Sign-Up



The year ahead

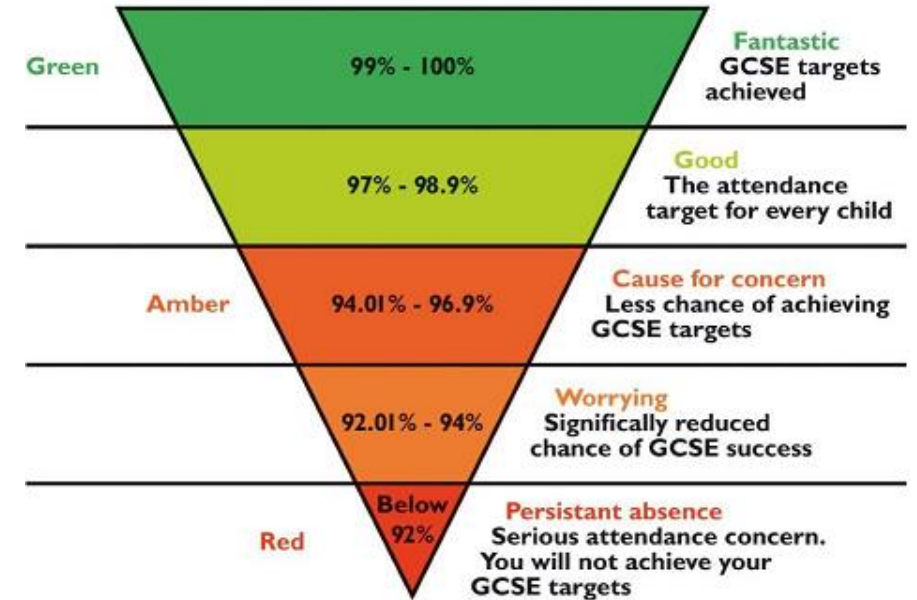
- Target for attendance is 96%, including illness
- Attendance of less than 90% is classed as Persistent Absenteeism and affects outcomes

The Times and The Sunday Times ✓
September 1 at 7:02 AM · ⚙

Parents who allow their children to regularly skip school are significantly denting their future earning potential, the education secretary has warned.

As millions of pupils are due to return to school tomorrow, Bridget Phillipson said too many parents believed truancy was acceptable in pursuit of “cheaper holidays”, to avoid “unpopular subjects” or for “birthday treats or even a runny nose”.

A new analysis compiled by the Department for Education (DfE) has found that every day missed from the classroom will cost absent children “hundreds of pounds” in wages over their lifetime



Attendance	Average Grade	Progress made
Above 95%	7.2	2.2 grades
Below 90%	6.2	1.4 grades
Below 80%	4.8	0 grades

Leading with courage and compassion



START OF LESSON:

1. Starter on board and standing on door threshold to monitor corridor and classroom.
2. Students lined up (facing forward in single file) silently or arriving silently.
3. Greeting students (insisting on eye contact and checking uniform).
4. Insist students enter in silence and maintain it: walk to seat, equipment out, title, LO, date, starter.
5. Monitor starter task and take register.



We are what we repeatedly do.
Excellence, then, is not an act, but a
habit.

— Will Durant —



END OF LESSON:

1. Check prep is recorded
2. Ask and ensure students pack up in silence and then stand behind their chairs.
3. Final checks: key learning points, uniform, tidy classroom
4. Thank the class and ensure students say thank you back
5. Dismissal at door (row by row) and ensure silence in corridor



We are what we repeatedly do.
Excellence, then, is not an act, but a
habit.

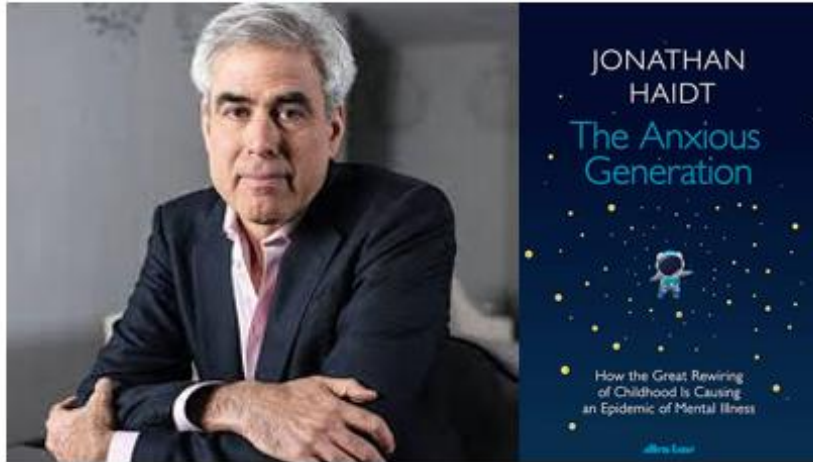
— Will Durant —





Leading with courage and compassion





Jonathan Haidt
Social Psychologist



Press release

Government launches crackdown on mobile phones in schools

Schools will receive new guidance on prohibiting mobile phone use during the school day.



Banning smartphones helps learning, say educators



Leading with courage and compassion



Safeguarding

As a school, our first priority is your child's welfare and therefore there may be occasions when our concern for your child means that we have to consult other agencies even before we contact you. The procedures we follow have been laid down by the Ealing Area Child Protection Committee.



Department
for Education

**Keeping children
safe in education**



Safeguarding officers:



Mr Santos – Designated
Safeguarding Lead



Ms Edwards – Deputy
Designated Safeguarding



Mr Salter – Head of
Inclusion

The above are the staff responsible for child protection/safeguarding issues across the school.

If you have any concerns about the safety of any students in your classroom please contact the team above by using CPOMs or if this is unavailable then please send a message to cp@ealingfields.org.uk.

Please give brief details of your concerns or an account of what happened. One of the team will act as soon as they see it. If there is a delay, please report to a member of office staff using the email office@ealingfields.org.uk.

The following staff below will also play a direct role in safeguarding matters relating to students in their year groups:



Head of year 7
Ms Dunford
Jones



Head of year 8
Mr Townsend



Head of year 10
Ms Knopp



Head of year 11
Mr Coussins



Safeguarding

You must be aware that the school will permanently exclude a pupil for the following:

- Having an offensive weapon in school
- Possession of any illegal drugs in any form illegal drugs in school
- Supply or intent to supply illegal drugs in or out of school
- Assaulting a member of staff



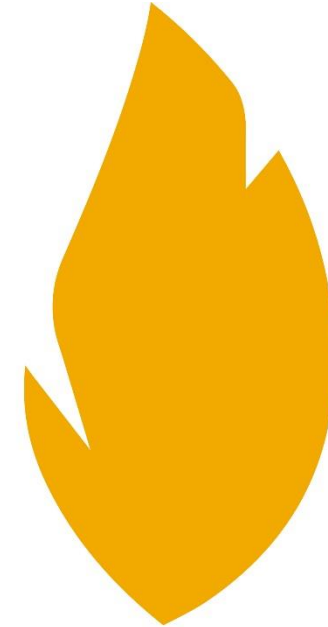
Safeguarding - Medication

All Students with a recorded medical condition that requires medication must bring **in date medication** with them on all school trips, both day and residential. If students do not have in date; they **will not** be allowed to participate in the trip.



Ealing Fields High School

PTSA



Parent, Teacher & Student Association

Registered Charity Number 1178730

