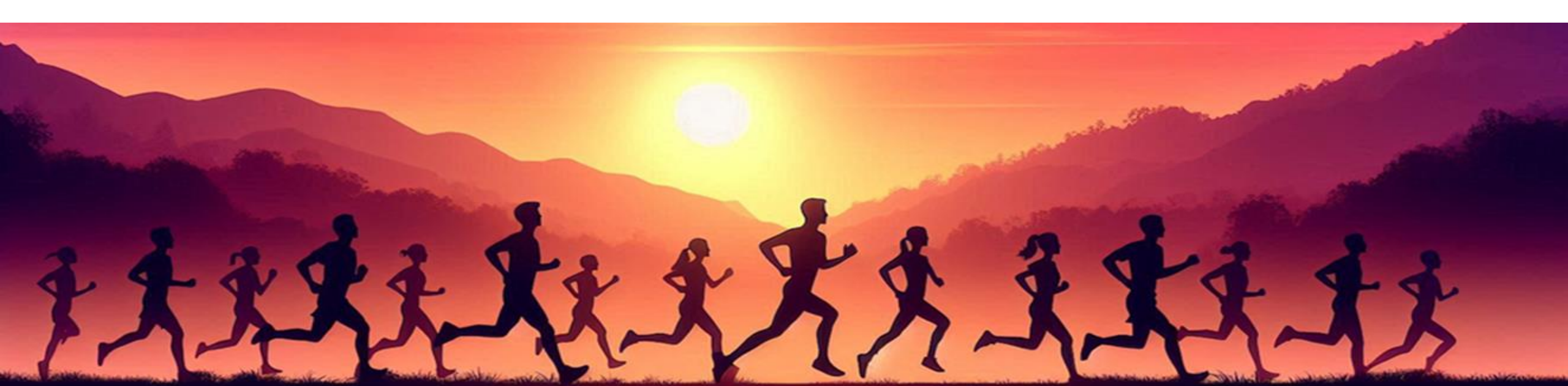




Ealing Fields

High School



Run with perseverance

Information Evening

Tuesday 9th September



Opening responses

Surrounded by a cloud of witnesses

Let us run the race set before us

Following in the footsteps of the pioneers

who have inspired us to do great things

Therefore let us be courageous

Running with confidence and hope.

Running with perseverance

Ms J Trewin

Associate Headteacher



Run with Perseverance



Aptitude

Keep noticing what you are good at

+



Attitude

Build your learning habits through positive routines

+



Good Choices

Engage fully in a wide range of learning opportunities



Personal Goals

Challenge yourself with a resilient Plan A/B/C approach



Good Gifts Used in Service

Don't stay in a bad place

Unique Value in Community

Life in All its Fullness

Leading with courage and compassion



Ealing Fields Learning Culture – Routines which support habits

I come fully equipped

I am polite and helpful

I wear my uniform perfectly

I am focused at all times

I walk to my lessons with purpose

I care about the quality of work in my book

I complete lesson prep for every lesson, every day

I am reflective about myself and my learning

I engage with the wider school and community

Leading with courage and compassion



Whole school changes in 2025-6

1. Shorter school day
2. Increased roll
3. Some changes to curriculum offer in the lower school
4. Some mixed ability teaching in the lower school
5. Alignment is greater than ever





Students



Pastoral Support



Parents



Tutors



Curriculum Planners



Teachers

Prep – It takes a village

Leading with courage and compassion



GCSE Successes - Progress

	CAT 8	Maths	English	EBacc	Open
Ealing Fields	+1.36	+1.12	+1.41	+1.56	+1.27
National Rank	1	1	1	1	1

68% met or exceeded Trust Targets

Year 11	Boys	75%
Year 11	Girls	74%

FFT5 Target for Grade 9s	Actual No. of Grade 9s
44	233

Borough Comparisons	5+ in Maths and English	5+ EBACC	Ave Att8 Score
Ealing Fields	80.3% (2 nd)	80.3% (1 st)	66.1 (2 nd)
Ealing Average	58.5%	32.8%	53.1

Leading with courage and compassion



Successful post-16 progression

Mr L Santos

Deputy Headteacher



Plan A, B or C ... All are positive outcomes



Plan A

Aspirational!

I want to do four subjects: Maths, Chemistry, Physics and Biology. I would like a place on the medics scholar programme.

Plan B

Better Case Scenario (if not A!)

I will do three subjects: Maths, Chemistry and Biology. I will attend some medicine lectures throughout sixth form.

Plan C

Consolidation Position

I will study one science and two other complimentary subjects (such as Geography and Psychology.) I will research alternative careers in the medical sector.



Progression beyond GCSE: reminder

Requirement	Post-16 options
Grades 4-5 in key EBAC GCSE courses	⇒ Vocational college courses
Achieve at least a grade 6 or 7 in chosen A-level subjects	⇒ A level courses
At least grade 5 in others	
Achieve grades 7-9 in all GCSEs	⇒ University courses
Pass all A-levels	
Achieve grades 8-9 in all GCSEs and A/A* A-levels	⇒ Russell Group universities





Twyford and William Perkin General Entry Requirements



8 GCSE passes including Maths and English with a 5 or better





Twyford
C of E
High School

Art
Biology
Business studies
Chemistry
Computing
Drama
Economics
English
language
English literature
Film studies
French
Further maths
Geography
German

Graphics
History
Maths
Music technology
Photography
Physical education
Physics
Politics
Psychology
Religious education
Sociology
Spanish



William Perkin
C of E
High School





Twyford
C of E
High School

Art
Biology

Chemistry
Computing
Drama

French
Further maths

German

Graphics

Maths
Music technology
Photography
Physical education
Physics

Spanish



William Perkin
C of E
High School





Twyford
C of E
High School

Art

Graphics



William Perkin
C of E
High School

Drama

Photography
Physical education

French

Spanish

German

Leading with courage and compassion



Ada Lovelace T-levels

- Digital
- Laboratory Science
- Accounting



Entrance Criteria

8 x GCSEs Grade 5 and above and including Maths and English

Laboratory science - Grade 6 or above in science

Digital – Grade 6 computer science OR demonstrate an interest in the subject.

Accounting – Grade 6 in Maths



Other fantastic post-16 options are available

Where?	Grades needed	Aim
Cardinal Wiseman: Accelerated pathway	5 x level 9-7 GCSE passes including English and Maths	Complete 4 A levels
Twyford/William Perkin	8 x level 9-5 GCSE passes including English and Maths (grade 7 required in chosen subject)	Complete 3 A levels
Elthorne extended pathway	Grade 6 in English and Maths + 3 other grade 6 qualification	Complete 4 A levels
Cardinal Wiseman: Academic pathway	6 x level 9-4 GCSE passes including grade 4 in English Lang	Complete 3 A levels
Elthorne: Academic pathway	Grade 5 in English and Maths + 3 other grade 6 qualifications (grade 6 required in chosen subject)	Complete 3 A levels
Elthorne: Technical pathway	5 GCSES at Grade 9-4 including English and Maths	L3 extended diploma and possibly an A level
Cardinal Wiseman: Technical pathway	4 x level 9-4 GCSE including English language	BTEC and possibly an A level or 2

Richmond College	An average point score of 6.5 or above - depends on subject with specific GCSE requirements.	4 A levels
Richmond College	An average point score of 5 to 6.5 - depends on subject with specific GCSE requirements.	3 A levels
Uxbridge College	Grade 4 in English and Maths + course requirements	Level 3 diploma
Uxbridge College	Grade 3 in English and Maths	Level 2 diploma
West London College/ West Thames College	Entry requirements tend to be 4-5 or more GCSEs at grade 4 or above (or completion of the relevant level 2 course).	Level 3 diploma (BTEC)
West London College / West Thames College	Requirements tend to be 4 or more GCSEs at grade 3 or above.	Level 2 diploma (BTEC)
West London College/ West Thames College/ Uxbridge	May need 4c GCSES at grade 2 or above including English and Maths	Level 1 diploma



BTEC



↑↑↑↑↑↑↑↑↑↑↑↑↑↑↑↑
↑↑↑↑↑↑↑↑↑↑↑↑↑↑↑↑

T-LEVELS

THE NEXT LEVEL QUALIFICATION
A NEW CAREER FOCUSED ALTERNATIVE TO A LEVELS

↑↑↑↑↑↑↑↑↑↑↑↑↑↑↑↑
↑↑↑↑↑↑↑↑↑↑↑↑↑↑↑↑

Apprenticeships

The logo for Apprenticeships features a stylized sunburst icon on the left. To the right is a collage of eight small photographs showing diverse individuals in various work environments, including a woman with a child, a woman in a lab coat, and a woman reading a document.

Application process (what's your plan A / B / C?)

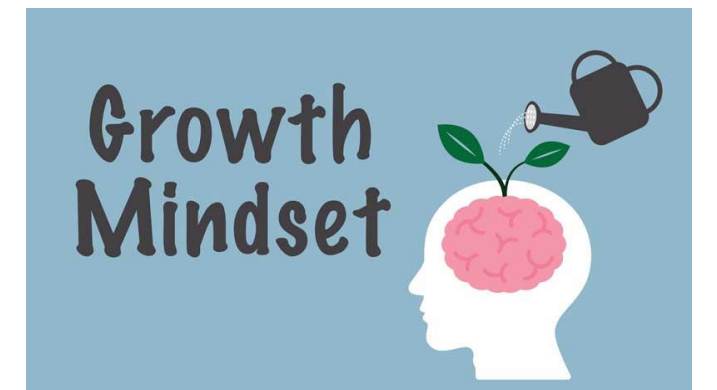


- Start researching now
- **Most 6th form deadlines before Christmas**



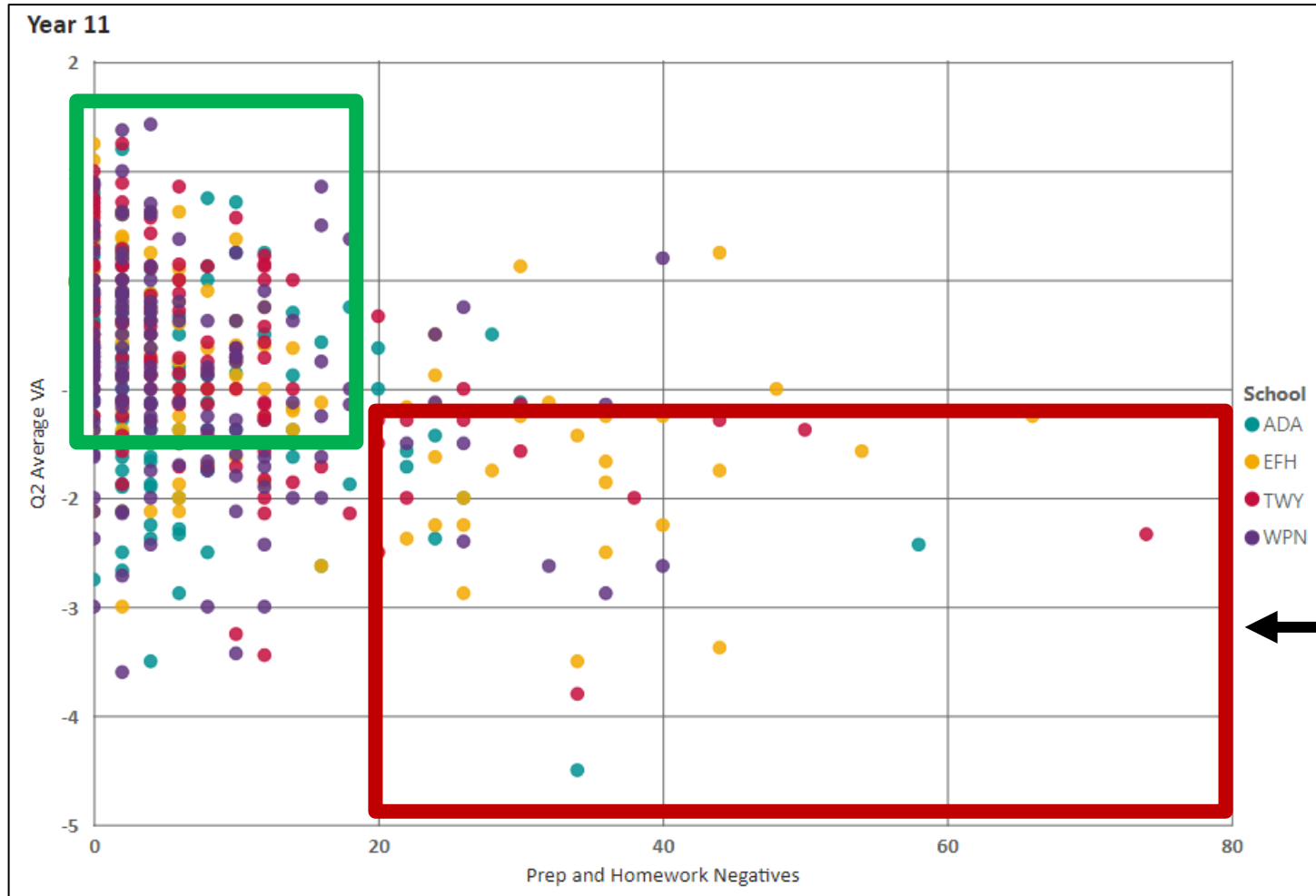
Remember... GCSEs aren't easy!

- Lots of content to memorise
- Virtually all exams are *linear* exams (taken at end of Year 11)
- All GCSEs use 1-9 grading system (no more fine grades)
- It is a legal requirement in the UK to resit Maths and English if you fail to pass



Year 11 Students 2024-25

Number of prep/HW negatives plotted against GCSE mock exam progress



Of the students with the most negatives for prep, the majority are under target



Leading with courage and compassion



Assessment

Q1	6 th – 10 th October
Q2	3 rd – 18 th December
Q3	27 th Feb – 6 th March
GCSEs	Week commencing Monday 4 th May



What is different about exams in Y11?

Your progress throughout the year matters more than ever before:

- **Q1 results are vital:** you will be asked to discuss your results at Q1 in your interviews.
- **Q2 results could decide whether you get a conditional offer to a sixth form.**
- **Q3 results will be your final indication before sitting your GCSEs**



Conduct, Wider Learning & Wellbeing

Mr Coussins
Head of Year 11



The key to success in Year 11 is...

...nothing you don't know already!

It's what we've been training you for over the last 4 years...

but you do need to be putting it **all** into practice, every single day.



Leading with courage and c



Your child's form tutor is your first point of contact:

11 Byron Tutor	Mr French	jfrench@ealingfields.org.uk
11 Chambers Tutor	Ms Rathod	mrathod@ealingfields.org.uk
11 McQueen Tutors	Ms Johnson	jejohnson@ealingfields.org.uk
11 Perceval Tutor	Mrs Jayakrishna	ejayakrishna@ealingfields.org.uk
11 Springfield Tutor	Mr Harrison	mharrison@ealingfields.org.uk
11 Yeats Tutor	Ms Alyas	kalyas@ealingfields.org.uk

My email = jcoussins@ealingfields.org.uk



Key dates for the term ahead

Date	Event
Monday 15 th September	Photography Day (get your hair done!)
Monday 22 nd September	<u>Meet the Tutor Day</u>
Thursday 2 nd October	Early Closure – Open Evening
Friday 3 rd October	Inset day - Staff Training
Friday 24 th October	Inset day – staff training



The year ahead

100% of students participating in Wider Learning

Soft Skill	Clubs which particularly help develop this skill
Communication	The Promethean, Team Sports, Creative Writing, History Scholars, Sign Language, Philosophy Club, Table Talk
Leadership	Team sports, Shine Lectures, Citizens
Positivity	Citizens, Fitness Club, Interform Sports, Trampolining
Problem solving	Maths Squad, Philosophy Club, Chess & Board Games Club
Teamwork	Team sports, Orchestra, Choir, Wind Band, Guitar Group, Citizens, Interform
Organisation	Literature Society, Study Club, all clubs
Public Speaking	Debating Society, Politics Club, School Production, Choir, History Scholars, Table Talk
Time Management	Study Club, School Production, all clubs
Focus	Music clubs, Creative Writing Club, Table Tennis, Shine Lectures, Maths Squad, Chess & Board Games Club
Taking responsibility	Fitness, The Promethean, Literature Society



Leading with courage and compassion



Student Leadership Team 2025-26

Head Students



Sam Golia



Naomi Srikanthan

House Prefects



Daniel Lennon



Akhil Vyavaharkar



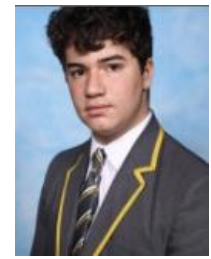
Alya Johnson



Charlotte Green



Hannah Brooks



Noah Goldman

Leading with courage and compassion



Student Leadership Team 2025-26

Pastoral Prefects



**Filip
Cornazzani**



**Lottie
Lindstrom**



**Poppy
Calland**



**Fernando
Ogbonna**



**Ruby
Nelson**



**Leticia
Trida**



**Eloise
Parkinson
Pride**



**Clara
Wilkinson**



**Aiden
Pattani**



**Josefina
Gonzalez**



**Uma
Parmar**



**Amanda
Onyekonwu**

Leading with courage and compassion



Student Leadership Team 2025-26

Wider Learning Prefects



**Aaron
Cibaj**



**Jacob
Finnerty**



**Elijah
Kyeyune**



**Sara
Losada**



**Anam
Mahmood**



**Antek
Moszczynski**

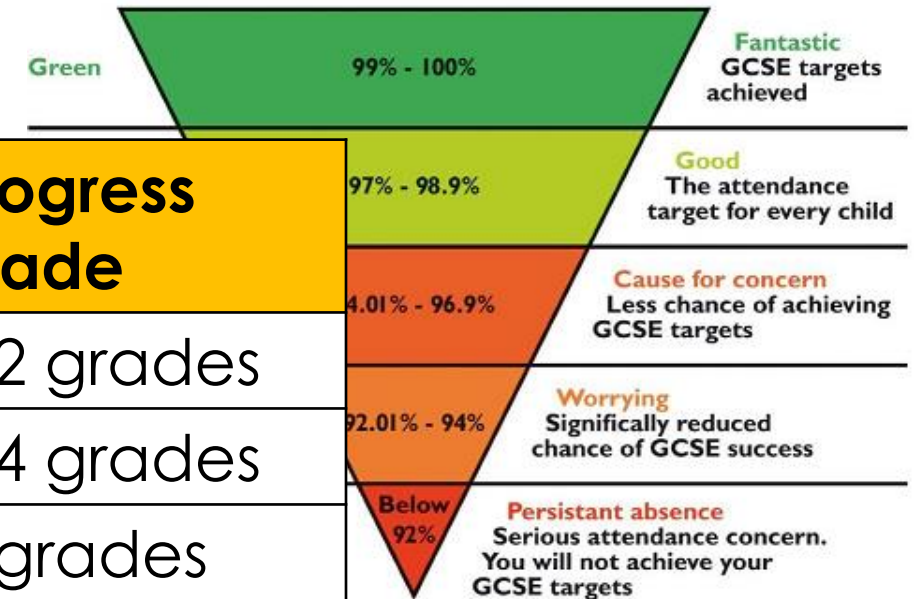
Leading with courage and compassion



The year ahead

- Target for attendance is 96%, including illness
- Attendance of less than 90% is classed as Persistent Absenteeism and affects your child's progress

Attendance	Average Grade	Progress made
Above 95%	7.2	2.2 grades
Below 90%	6.2	1.4 grades
Below 80%	4.8	0 grades



T The Times and The Sunday Times
September 1 at 7:02 AM · 🌐

Parents who allow their children to regularly miss school, losing their earning potential, the education secretary has warned.

As millions of pupils are due to return to school, the secretary said parents believed truanting was acceptable for "excuses such as 'birthday subjects' or for 'birthday treats or even a runny nose'."

A new analysis compiled by the Department for Education (DfE) has found that every day missed from the classroom will cost absent children "hundreds of pounds" in wages over their lifetime.

START OF LESSON:

1. Starter on board and standing on door threshold to monitor corridor and classroom.
2. Students lined up (facing forward in single file) silently or arriving silently.
3. Greeting students (insisting on eye contact and checking uniform).
4. Insist students enter in silence and maintain it: walk to seat, equipment out, title, LO, date, starter.
5. Monitor starter task and take register.



We are what we repeatedly do.
Excellence, then, is not an act, but a
habit.

— Will Durant —



END OF LESSON:

1. Check prep is recorded
2. Ask and ensure students pack up in silence and then stand behind their chairs.
3. Final checks: key learning points, uniform, tidy classroom
4. Thank the class and ensure students say thank you back
5. Dismissal at door (row by row) and ensure silence in corridor



We are what we repeatedly do.
Excellence, then, is not an act, but a
habit.

— Will Durant —



Detention system remains the same

MLT (4 point / 40 minute) detention categories are shown below:

- **Disruptive behaviour** (e.g. talking in AM or lunch time lineup / or repeatedly disrupting in a lesson)
- **Dangerous behaviour** (e.g. could be physical behaviour / specific misuse of lab equipment)
- **Reckless behaviour** (e.g. throwing water)
- **Unkind behaviour** (e.g. unkind actions or language towards another student)
- **Disrespect for school environment** (e.g. littering, misusing school bathrooms)

**SLT detentions still remain the same on
Fridays for serious incidents**



Open Evenings Announced so far: TBC

16th September – 5.30-7pm - Capel Manor College

1st October 5-7pm - West Thames College (Isleworth)

7th October 5-7pm - West Thames College (Feltham – construction, engineering, motor vehicles)

30th September –Greenford Sixth Form

11th October- 10am- 3pm Capel Manor College open day

11th October 10-2pm Richmond Upon Thames open day

16th October – 5-7pm - Drayton Manor Sixth Form

21st October – Elthorne Park Sixth Form (book tickets in advance)

5th November 5-7pm - Chiswick Sixth Form

4th November – 5-7pm - Gunnersbury Sixth Form

11th November – 4:30-6:30pm – Ealing Green College

12th November – 4:30-6:30pm – Southall Community College

12th November – 4-8pm Uxbridge College

13th November – 4:30-6:30pm - Hammersmith and Fulham College

13th November – 5:45pm – Twyford Sixth Form

18th November – 4-7pm - Richmond Upon Thames College

20th November - 6-8pm - William Perkin Sixth Form

27th November 6-8PM Ada Lovelace Open evening (Booking opens 13th November)

Other sixth forms have not yet announced their open evenings so please check their websites.



Community Notices

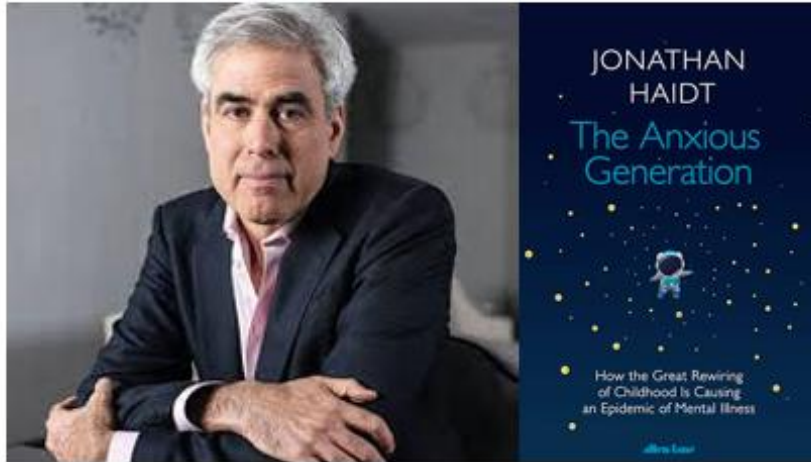
Ms Trewin





Leading with courage and compassion





Jonathan Haidt
Social Psychologist



Press release

Government launches crackdown on mobile phones in schools

Schools will receive new guidance on prohibiting mobile phone use during the school day.



Banning smartphones helps learning, say educators



Leading with courage and compassion



Safeguarding

As a school, our first priority is your child's welfare and therefore there may be occasions when our concern for your child means that we have to consult other agencies even before we contact you. The procedures we follow have been laid down by the Ealing Area Child Protection Committee.



Department
for Education

**Keeping children
safe in education**



Safeguarding officers:



Mr Santos – Designated
Safeguarding Lead



Ms Edwards – Deputy
Designated Safeguarding



Mr Salter – Head of
Inclusion

The above are the staff responsible for child protection/safeguarding issues across the school.

If you have any concerns about the safety of any students in your classroom please contact the team above by using CPOMs or if this is unavailable then please send a message to cp@ealingfields.org.uk.

Please give brief details of your concerns or an account of what happened. One of the team will act as soon as they see it. If there is a delay, please report to a member of office staff using the email office@ealingfields.org.uk.

The following staff below will also play a direct role in safeguarding matters relating to students in their year groups:



Head of year 7
Ms Dunford
Jones



Head of year 8
Mr Townsend



Head of year 10
Ms Knopp



Head of year 11
Mr Coussins



Safeguarding

You must be aware that the school will permanently exclude a pupil for the following:

- Having an offensive weapon in school
- Possession of any illegal drugs in any form illegal drugs in school
- Supply or intent to supply illegal drugs in or out of school
- Assaulting a member of staff





Ealing Fields

High School