

# Education Inclusion Family Advisor Newsletter June 2025

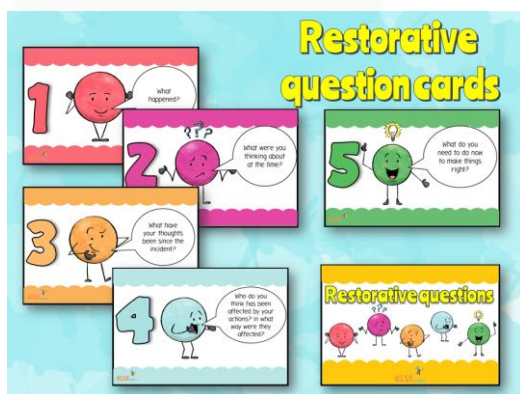
## A Bit About Me

Hi, my name is Danielle and I'm your school's link EIFA. As an EIFA I offer advice and strategies to parents and carers with a Primary School aged child that may be experiencing some challenges such as routines, sleep, sibling rivalry, challenging behaviour, worries or self-esteem. If you'd like a chance to chat about any of these topics, just contact me via this forms link <https://forms.office.com/e/Mx9Vpb8aq6>

*I am currently working with a waiting list and will contact you as soon as possible.*

## Parenting Top Tip Restorative Conversations

After your child has calmed down after a meltdown, a restorative conversation can help to mend relationships. They give your children a chance to listen, reflect, empathise and make things right. It is also a learning opportunity for everyone to plan how to deal with things differently in the future.



\*Reference - ELSA

**Step 1** – What happened? Let your children tell the story.

**Step 2** – What were you thinking about at the time?

**Step 3** – What have your thoughts been since?

**Step 4** – Who has been affected by your actions? In what way?

**Step 5** – What do you need to do now to make things right?

## Treasure Hunt!

The sun is shining and it is time for a treasure hunt! Kids love treasure hunts especially if there is a treat at the end. You could make your treasure chest a matchbox or go looking for things to spot all around you.. a post box, a road sign.. Not only is this free and super fun but it gives your children a chance to see writing all round them, practice reading and there will be loads of lovely chat!



## Last week (9<sup>th</sup> -15<sup>th</sup> June) was National Carer's week



EIFAs work in partnership with Centre 33 to support Young Carer's in our school communities. Young carers are children under 18 with caring responsibilities.

Visit [Caring - Centre 33](https://www.caring-centre33.org.uk) to find out more about the support available for young people with caring responsibilities.

Does your child have, or potentially have, an additional need or disability? **Pinpoint** ([www.pinpoint-cambs.org.uk](http://www.pinpoint-cambs.org.uk)) have lots of information, advice and tips. For **Cambridgeshire's Local Offer** go to [www.cambridgeshire.gov.uk/residents/children-and-families/local-offer](http://www.cambridgeshire.gov.uk/residents/children-and-families/local-offer)

Contact me directly on

 [danielle.tetherton@cambridgeshire.gov.uk](mailto:danielle.tetherton@cambridgeshire.gov.uk)