

"A drawing is simply a line going for a walk"



Paul Klee



sketch	a rough drawing or painting, possibly to be looked at to complete a finished drawing or painting
line weight	the strength, heaviness or darkness of a line
continuous line	a line which does not end but keeps going
form	where an artist shows in a drawing or painting that an object is 3d rather than flat or 2d
print	where an image has been created on a block before paint or ink is applied, then paper is placed on top and the image left on the paper is the print
woodblock print	where a print is made by carving lines in a block of wood

Leonardo da Vinci



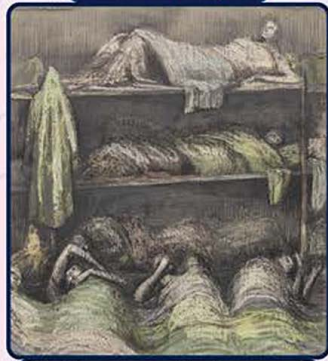
Studies of Water (1508-1509)

Katsushika Hokusai



The Great Wave (1829-1833)

Henry Moore



Shelter-scene: bunkers and sleepers (1941)