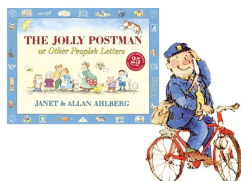


Eastfield Foundation Stage News!

September 2018

We'd like to welcome all of our children and parents and carers to the new school year. We hope you've had a lovely summer.

Our topic for the Autumn Term is 'Once Upon a Jolly Postman...'



Over the coming weeks the children will be...

- settling in and becoming familiar with the routines and expectations.
- sequencing and re-telling traditional stories, fairytales and stories from other cultures.
- role-playing stories and using different materials to make props.
- practicing traditional Nursery Rhymes to enable us to sing simple songs from memory. We will be using our voices and instruments to explore how sounds can be changed. We will also be using our bodies to create movement in response to music.
- investigating the properties of different materials and their suitability for different uses. For example, to make houses for the 3 little pigs
- learning about 'Special People' in our RE theme. We will also explore different religious celebrations (including Harvest Festival, Diwali, Remembrance, Hanukah, Christmas...)
- going on a journey in PE to develop their spatial awareness, their ability to travel in different ways and their knowledge of health and safety practices. They will pretend to be different story characters with music and apparatus introduced to add challenge to their movement!
- Our PSHE unit this term is 'Being me in my world' and we will also be introducing the children to 'mindfulness'.

...and much, much more!

Once Upon A Time Themed Day

On Wednesday 26th September your child will have the opportunity to come to school dressed as a character from their favourite traditional story / fairytale. Throughout the day there will be a range of story-based activities for them to enjoy.

Parent Collaboration Sessions

We will be holding Parent Collaboration sessions in the hall on Wednesday 17th October. We hope you will be able to come and be creative with your child/ren.

On the day, we'd love you to make a **Fairytale Castle** to display in our Foundation Stage unit. You could make a small-scale model or you could work in a team to make a large-scale castle for the children to play inside. We will provide some basic craft resources but please start collecting any useful materials that you'll need.

Session times will be 9.15am to 10.45am and 1.30pm to 3pm
Please see your child's teacher nearer to the time to be advised which session to attend.

Reception PE

Can Reception children please bring their PE kit into school on a Monday and leave it in school all week. We will send it home with them each Friday.

Nursery children do not need a PE kit.



How you can support your child's learning at home this term:

- Read fairytales and traditional stories to your child to help them to become more familiar with them. In particular we will be focussing on:

| | |
|------------------------------|-----------------------|
| Goldilocks & the Three Bears | Cinderella |
| Little Red Riding Hood | Hansel & Gretel |
| Jack & The Beanstalk | The Three Little Pigs |

- Sing traditional Nursery Rhymes together.



- We have a selection of books in our Foundation Stage Library that you are welcome to browse and borrow. It's located in the Nursery Cloakroom - come and have a look any day after school.