



School News

01304 611360 www.eastry.kent.sch.uk
headteacher@eastry.kent.sch.uk

No. 5

3rd October 2024

DATES FOR YOUR DIARY

Friday, 4th October - Year 3 Class Worship at 9.00am in the School Hall

Parent and carers of children in Year 3 are invited to join us for their class worship at 9.00am in the school hall.

Friday, 11th October - Year 2 Class Worship at 9.00am in the School Hall

Parent and carers of children in Year 2 are invited to join us for their class worship at 9.00am in the school hall.

PTFA News

Personalised Gifts with Child's Art Work

On Tuesday the children brought home details about this year's child's art work personalised gifts being organised by the PTFA. As in previous years children can complete art work and this is then printed on to cards, mugs, coasters, tote bags or other items you can purchase as gifts for Christmas. The procedure is slightly different this year where by the art work is submitted to the company who then scan this and return an individual order form to the school which will be sent home with your child should you wish to place an order. The deadline to receive children's art work for submission is the last day of term 1, 25th October. **By returning your form you are agreeing that your child's art work, name and year group can be submitted to <https://www.school-fundraising.co.uk/>.**

Tuesday, 15th October - PTFA AGM Meeting at 5.00pm in the School Hall

All parents and carers are invited to our AGM which takes place at 5.00pm in the School Hall on Tuesday, 15th October. We look forward to seeing you there.

HEALTH ADVICE/ONLINE SAFETY SECTION

Looking After Your Child's Mental Health

As parents and carers you will want to support your child's mental health but it can often be difficult to identify when there might be a problem and also how best to support them.

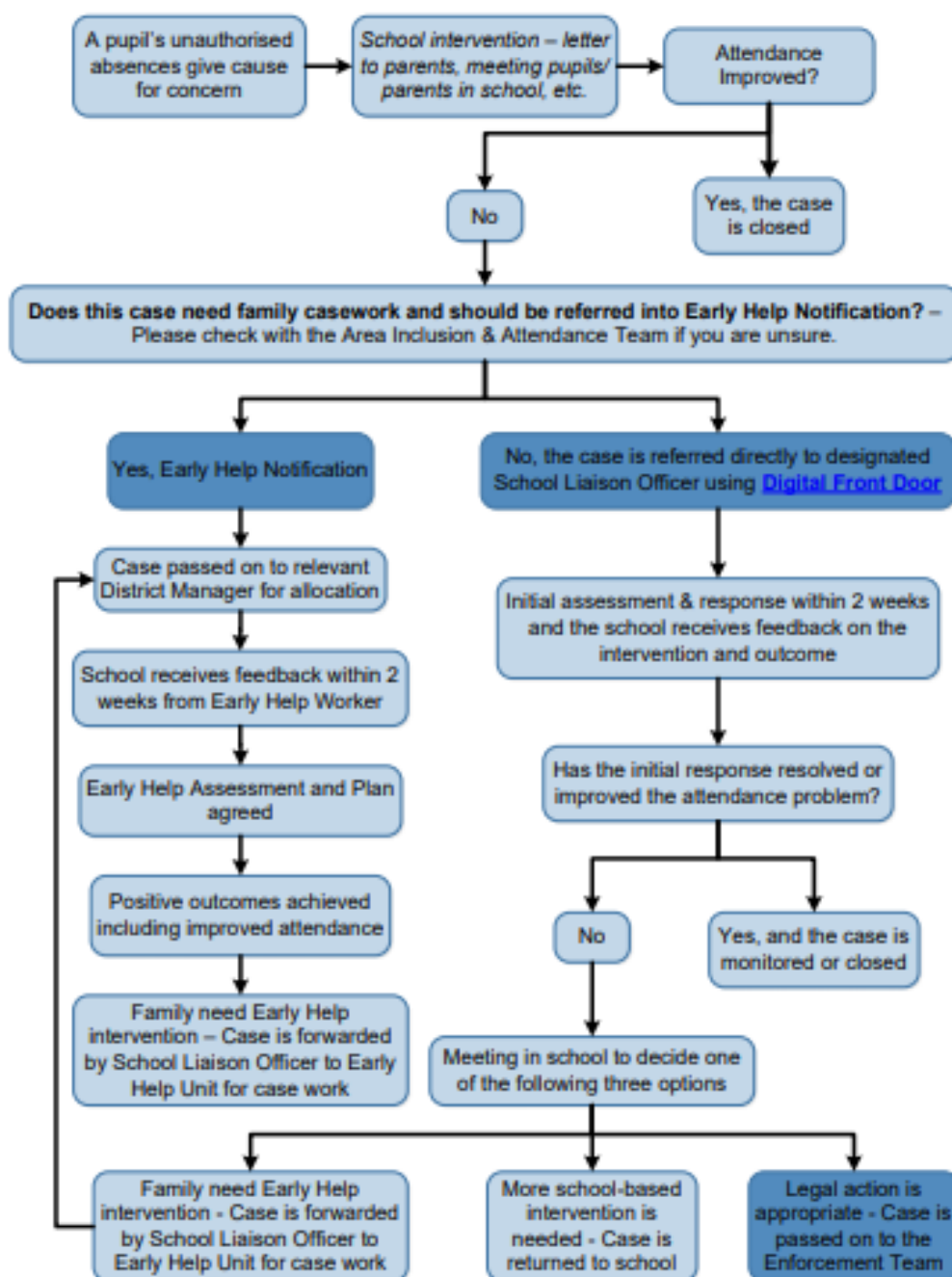
The NHS - Every Mind Matters have useful information and links on a page dedicated to children's mental health. This can be found by using the following link: <https://www.nhs.uk/every-mind-matters/supporting-others/childrens-mental-health/>

If you have any concerns regarding your child's mental health and feel we may be able to help do speak to Mrs Tracy Inglis, Family Liaison Officer who is usually on the school gate in the mornings or can be contacted via the school office.

School Attendance

Further to my letter sent on 9th September, at Eastry we understand the importance of school attendance and our expectations, policies and procedures support this. Every lesson and every day counts and none attendance is proven to have a significant effect on your child's education. Part of the school's responsibility is to monitor and take action in regards to poor attendance. Please see the graph below which forms part of our Attendance Policy which can be viewed on the school website. I know you will want to support us in ensuring good attendance to give the best outcome for your child's education.

Kent School Referral Pathway – Pupil Attendance



OTHER COMMUNITY NEWS

Eastry Church Free Family Breakfast

Eastry Parish Council are running a free family breakfast on alternative Saturdays, starting on 12th October. It is hoped this will give families a chance to meet other families in Eastry while enjoying breakfast provided by the church.



OTHER SCOOOL NEWS

Half-Term Holiday Club

Elite Community Coaching, who run some of our after school clubs and P.E. lessons in school, are running a number of holiday clubs during the October half-term. A leaflet is being sent home with children today and further information can be found on their website at:

<https://www.elite-coaching-uk.co.uk/holiday-club-bookings>

AFTER SCHOOL CLUBS

Week commencing 7.10.24

AFTER SCHOOL CLUBS	
Week commencing 7.10.24	
MONDAY	
Poetry Club (3.30-4.30pm)	YES
Football Club (3.30 to 4.30pm)	YES
TUESDAY	
WEDNESDAY	
Singing Club (8.00 to 8.30am)	YES
Homework Club (3.30 to 4.00pm)	YES
Dance - Disney Descendants (3.30 to 4.30pm)	YES
THURSDAY	
FRIDAY	

Kind regards

Mrs Sarah Moss
Headteacher