

Educational Diversity

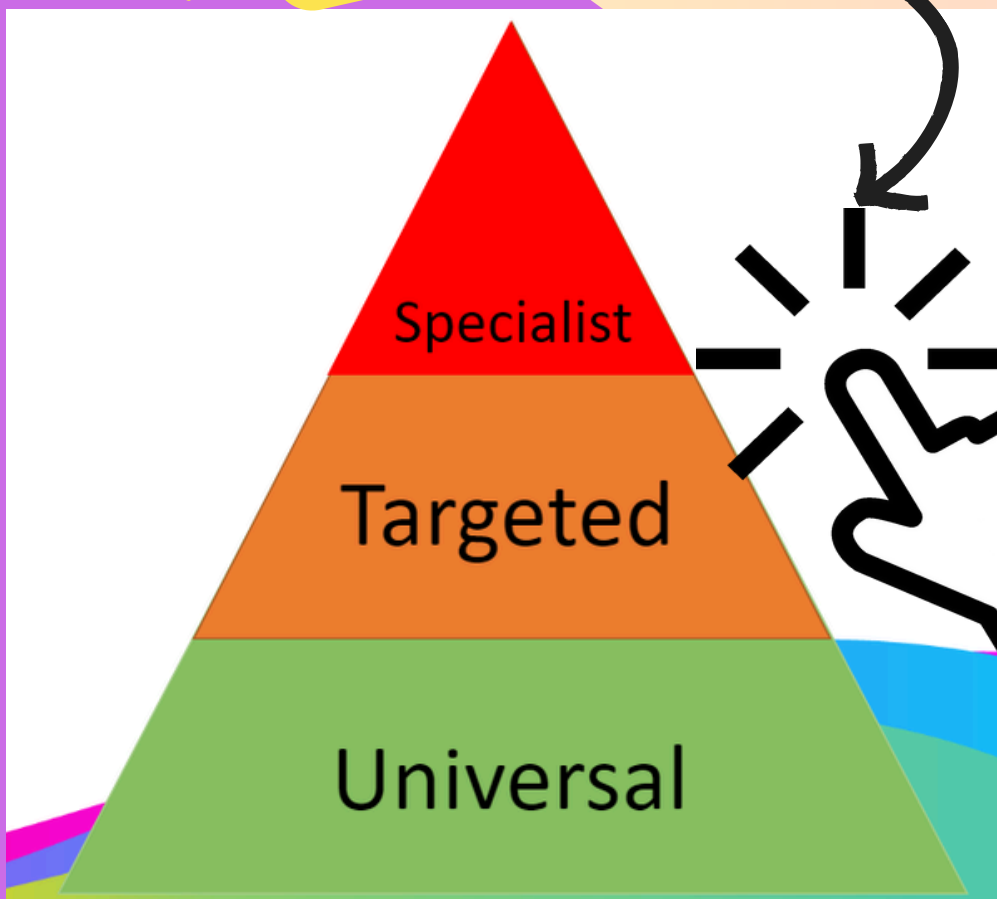
Autumn 2
November 2024
Issue 2

SEND Newsletter



I wanted to take this opportunity to thank you for your support over the first half term. From the survey results, I have put in a place referral system for staff so that I can get to know the pupils who are having difficulty in accessing the universal offer. Staff have also had training so we can then ensure the pupils' needs are individually identified and appropriate support is put in place in a timely manner.

What is the graduated approach?



Empowerment Charity



If you are a parent of a Neurodivergent child the Empowerment charity offer support services.



SEND coffee morning- 31st October



@Athena
10.30-11.45am

Does your child need more help?
Unsure of how and where to get support?

There is help! Come along and speak to our supportive SENDCo's. We will also be joined by services, charities and therapies form the local community. Including Aiming Higher, Talk therapies and Primary mental health workers.



**Ready,
Respectful,
Safe**

SENDCo's Student Recognition board

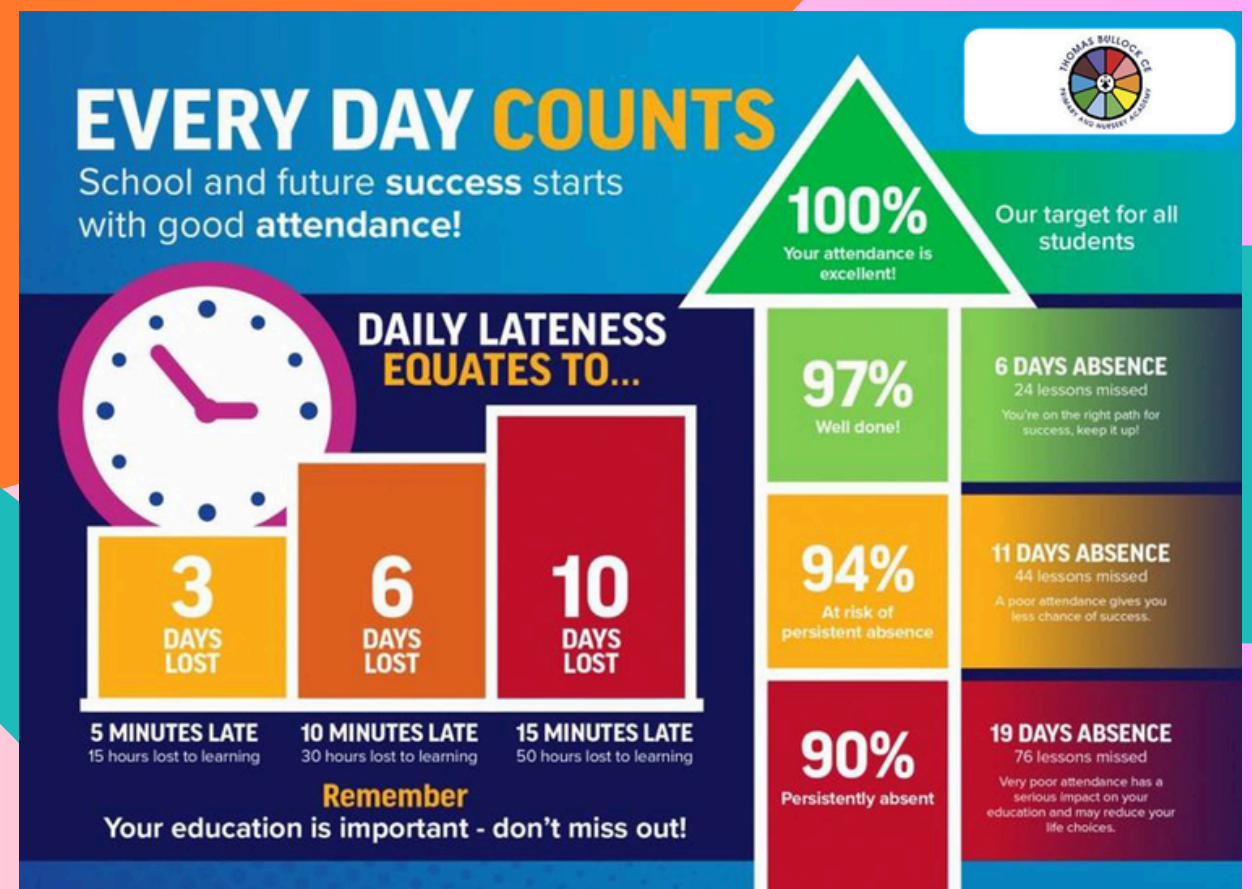
Kaan for being a role model.
Amber for valued team contributions.
Poppy for enthusiasm towards school.
Charlotte for growing in confidence.

Millie for adjusting to changes.
Kenzie for being respectful towards other peers.

Kai for being ready to learn. Cody For engaging well in lessons.

Sal for building relationships with new staff.

Paige for engaging well in lessons.
Heaven for being resilient.



Blackpool Family Hubs

click here!

**Mondays- Primary Mental Health drop in Westminster Academy
2pm to 4.30pm**

**Tuesdays-Primary Mental Health drop in Devonshire Primary Academy
2pm to 4.30pm**

**Fridays- Blackpool Children's and Young Persons Learning Disability and Neuro Team Parents/ Carer drop in session.Central Family Hub
9.30-11.30am**

**Fridays- Aiming Higher parent/carer coffee and chat session with guest speaker from the Specialist Teaching Team.
9.30-11.30am**

**SEND Saturdays
North Family Hub
10am to 12pm**

click here!

Every day Counts!

Attendance is so important.

Your child may have unidentified needs or may not be meeting their full potential due to lost learning. If your child is in school regularly, then this will help them to receive the support and early intervention they may require.

SEND friendly community sessions

TESCO Wednesdays and Saturdays
10-11am

**9th November 9am-10am.
Showtown .**



First Sunday of every month
the final hour of the day