

Welcome to Year 2
Working in Partnership

Meet the Staff

Miss Garvey: Class Teacher



Miss Smale: Teaching Assistant



Miss Reszka: Teaching Assistant

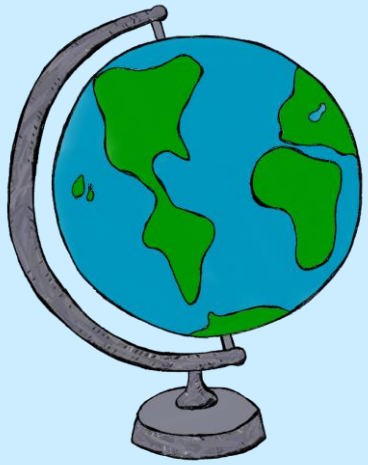


Mr Webb: Multiflex



Themes

Australia!



All Around the World

Fire Fire!



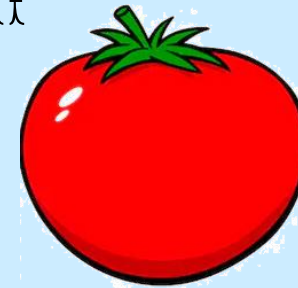
Go Wild!



Florence Nightingale &
Mary Seacole



Fighting
Fit



Our School Day

		8:45-9:00		9:00-10:00		10:15-10:30	10:30-10:45	10:50-11:00	11:00-11:50		11:50-12:10	12.10 - 1.00		1.05 - 1.10		1.10 - 1.25	1.25-2.45		3:00-3:20
	MONDAY	Morning Challenge (Maths)	Maths	Phonics	B	Phonics	English (SPAG)	Number Sense/Reading Groups			Singing Assembly		Geography	P.E./R.E.		Fantastic Mr Fox			
	TUESDAY	Morning Challenge (Maths)	Maths	Phonics	R	Phonics	English (Writing)	Handwriting/Reading Groups			Whole School KS1 Assembly		Science		Fantastic Mr Fox				
	WEDNESDAY	Morning Challenge (Maths)	Phonics	Maths		E	Phonics	English (Reading)	Number Sense/Reading Groups	Lunch		Computing		Jigsaw		Fantastic Mr Fox			
	THURSDAY	Morning Challenge (Maths)	Maths	Phonics	A	Phonics	English (Writing)	Handwriting/Reading Groups	Register		D.T.		Music		Fantastic Mr Fox				
	FRIDAY	Morning Challenge (Maths)	Maths	Phonics	K	Phonics	English (Writing)	Number Sense/Reading Groups			PPA: P.E.		PPA: Spanish		Assembly 2:45	Fantastic Mr Fox			

School Trips



Staircase House

Burwardsley

Local Walk



Church Visit



Safety Central



Behaviour and Expectations

Rewards

Dojo points

Stickers

Celebration assembly
certificates

Kev the Koala

Consequences

3 verbal warnings

Name on board

(5 minutes from playtime)

Minus dojo points

Contact parent or guardian



Reading in Class



- Children are being assessed this week.
- Every group will read once a week in a small group.
- Children will read one level above with the teacher than at home
- Children will have 1-hour of a whole class Guided Reading session a week
- Little Wandle will continue throughout Autumn in class.
- The focus in Year 2 moves from decoding to greater fluency and comprehension.
- Children will be benchmarked when we believe they're ready.

Reading at Home - Year 2



- All children will take an individual book home.
- Children are expected to read with an adult every day for 10 minutes.
- Children to be given designated days to change their books (front of their reading records).

Day 1: Focus on decoding the words

Day 2: Focus on re-reading the book with fluency and expression

Day 3: Focus on comprehension questions.



Please sign in their reading records with:

The title of the book, the date and how many pages completed.

Fun texts to read at home

Reading is the **KEY** to learning



Comic books

Newspapers

Magazines

Recipes

Wikipedia for kids

Audiobooks

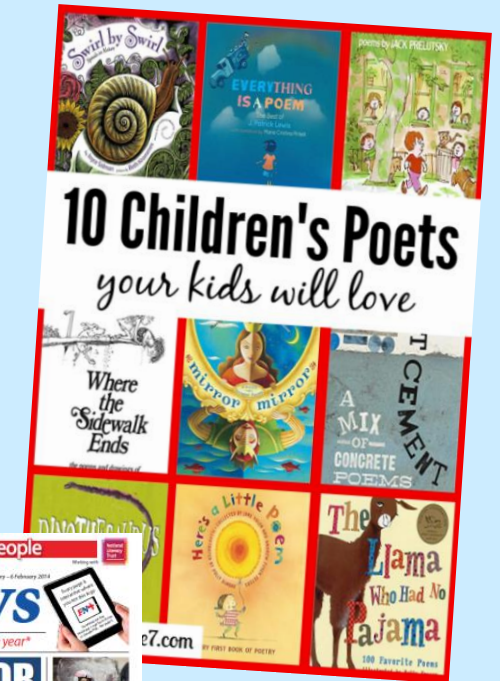
Non-fiction books

Poetry

Instructional texts

Menus

Picture books



P.E. Days

- P.E. days will be a **Tuesday & Friday** or a **Thursday & Friday**
- These days are subject to change due to staff CPD & subject leadership schedule
- Parents to be notified via See-Saw of the specific weekly P.E. days at the beginning of each half term

Jigsaw

- Jigsaw is our PSHE scheme which we started at the end of last year
- Each half term the children will look at a different PSHE focus
- Their first topic is called: Being Me In My World





Homework



Homework complements work being done in school and helps to consolidate learning

Reading: 10mins every day (sign every time they read)

Maths/English: Every Friday to be returned the following Wednesday.
Please return the paper copy and it will be checked off on a class list.

Creative homework (once a term)

All logins will be placed in Reading Diary (Purple Mash)

SeeSaw

- Online learning journey through photos and videos
- Children's work will be shared on the app
- Each child has an individual code
- Like and comment



Communication

Please notify the office if your child is going home with another parent.

'Year 2' on the school website

Outside on the playground at the end of the school day

Phone/Email to the office

Newsletter

Parents Evening

School twitter