



Welcome to Year 2
Working in Partnership

Meet the Staff

Miss Thorpe: Class Teacher



Mrs Butters: Teaching Assistant

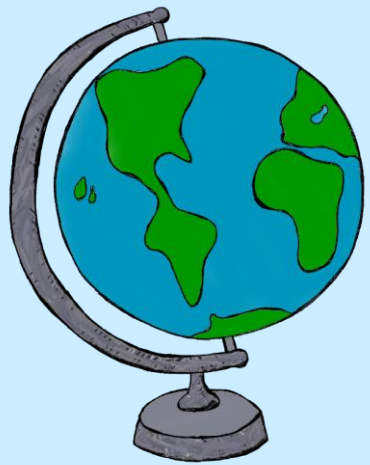
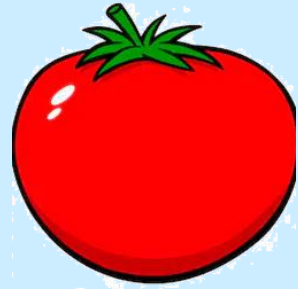


Mr Webb: Multiflex



Themes

Fighting Fit
(Autumn I)



United Kingdom
(Autumn II)

Fire Fire!
(Spring I)



Australia!
(Spring II)



Florence Nightingale
& Mary Seacole
(Summer I)



Go Wild!
(Summer II)

Our School Day

	8:45-9:00	9:00-10:00	10:00-10:30	10:30-10:45	10:45-11:15	11.15-12.15	12.15 - 1.05	1.05 - 1.10	1.10 - 1.25	1.25-2.45	3:00-3.20
MONDAY	Handwriting	Fluency Maths	Phonics	B	Reading	English	Lunch Register	RE		Computing	Class Book
TUESDAY	Handwriting	Fluency Maths	Phonics	R	Reading	English		KS1 Assembly	Science	Science	Class Book
WEDNESDAY	Handwriting	Fluency Maths	Phonics	E	Reading	English		Singing Assembly	PE	Geography	Class Book
THURSDAY	Handwriting	Fluency Maths	Phonics	A	Reading	English		DT		Music	Class Book
FRIDAY	Handwriting	Fluency Maths (AG)	Start Jigsaw	K	PE			Phonics Finish Jigsaw	Science	Assembly 2:45	Homework and Class Book

*Foundation subjects can move around.

Behaviour and Expectations

Rewards

Dojo points

Stickers

Celebration assembly
certificates

Kev the Koala

Consequences

3 verbal warnings

5 minutes from playtime

Minus dojo points

Speak with Mrs Lowe/Mrs Sedgwick

Contact parent or guardian



Reading in Class



- Children are being assessed this week.
- Children will have at least 1-hour/1.5-hours of a whole class Guided Reading session a week. Reading objectives are covered in our Pathways to Write sessions.
- Little Wandle will continue throughout Autumn in class.
- The focus in Year 2 moves from decoding to greater fluency and comprehension.
- Children will be benchmarked when we believe they're ready.

Reading at Home – Year 2



- All children will take an individual book home.
- Children are expected to read with an adult every day for 10 minutes.
- Children to be given designated days to change their books.

Day 1: Focus on decoding the words

Day 2: Focus on re-reading the book with fluency and expression

Day 3: Focus on comprehension questions.



Fun texts to read at home

Reading is the **KEY** to learning



Comic books
Newspapers
Magazines
Recipes
Wikipedia for kids
Audiobooks
Non-fiction books
Poetry
Instructional texts
Menus
Picture books



P.E. Days

- P.E. days will be a **Wednesdays and Fridays.**
- These days are subject to change due to staff CPD & subject leadership schedule.
- Parents to be notified via See-Saw of the specific weekly P.E. days.

Jigsaw



- Jigsaw is our PSHE scheme.
- Each half term the children will look at a different PSHE focus.
- Their first topic is called: Being Me In My World



School Trips

Burwardsley



Local Walk



Church Visit



Safety Central



Burwardsley

- Dates for your diary:
- Burwardsley Meeting – Tuesday 19th November at 3:30pm after pick up. The meeting will take place in the Year 2 classroom.
- Burwardsley Dates – Tuesday 29th April – Thursday 1st May.



Homework



Homework complements work being done in school and helps to consolidate learning.

Reading : 10mins every day.

Maths/English: Every Friday to be returned the following Friday.

Please return the paper copy/via Seesaw and it will be checked off on a class list.

Creative homework (once a term).

TTRS and Spelling Shed

TTRS and Spelling Shed codes will be sent home in due course.

Spellings will be shared on Spelling Shed in Autumn II onwards once our phonics phase 5 review is complete.

Times Tables Rock Stars will be introduced to the children this year with a focus on their 2's, 5's and 10's. The children can access this at home.

SeeSaw

- Online learning journey through photos and videos
- Children's work will be shared on the app
- Each child has an individual code
- Like and comment



Communication

Please notify the office if your child is going home with another parent.

‘Year 2’ on the school website

Outside on the playground at the end of the school day

Phone/Email to the office

Newsletter

Parents Evening

School twitter