



SEND

Parent carer newsletter



This is the SEND Newsletter for 28 November to 4 December 2022

What's on?

1. [Nominate a star for a SEND Award](#)
2. [BSL Advent Calendar](#)
3. [Release the cheeky Christmas Imps on the fun augmented reality trail in Cleethorpes](#)
4. [Holiday Activities](#)
5. [New equipment improves experience for local parents at Diana Princess of Wales Hospital](#)
6. [Autism and Positions of Power Research](#)
7. [Find a warm welcome space](#)
8. [SENDIASS](#)

Nominate a star for a SEND Award

Nominations are now open!

North East Lincolnshire Council's Special Educational Needs and Disabilities (SEND) Awards is a fantastic way of celebrating our local areas amazing children and young people with SEND and the unsung heroes who support them and make a real difference to the lives of children and young people with additional needs and their families.

This is a chance to showcase all of the brilliant achievements by people doing extraordinary things, and to show what can be achieved when we help each other and work together.

Who do you know who deserves to shine in 2023?

[SEND Award nomination form](#)



BSL Advent Calendar



The Educational Team for Hearing and Vision are excited to bring you a British Sign Language (BSL) Advent Calendar.

Learn 24 festive signs.

The video's will be posted on the Local Offer and Families First social media every day until Christmas Eve.

Catch up with the BSL Advent Calendar.

[Day 2- British Sign Language advent calendar - YouTube](#)



SEND

Parent carer newsletter



This is the SEND Newsletter for 28 November to 4 December 2022

Release the cheeky Christmas Imps on the fun augmented reality trail in Cleethorpes

Discover North East Lincolnshire has teamed up with High Street Safari to run a festive adventure in the 'Hunt for the Lost Toys' trail in Cleethorpes town centre from Thursday 1 to Saturday 31 December.



Take a break from the Christmas shopping as you are guided by The Luminauts, a team of superheroes who are celebrating their first Christmas on Earth.

The trail is totally free to take part in – all you need is a smartphone with a QR reader installed to take part.

[Release the cheeky Christmas Imps on the fun augmented reality trail in Cleethorpes - NELC | NELC \(nelincs.gov.uk\)](#)

Follow Discover NEL to find more festive activities are going on in our area.

[Discover North East Lincolnshire | Cleethorpes | Facebook](#)

Holiday Activities

Climb 4 is participating in the Holiday Activities and Food Programme (HAF).

You will need your HAF code from your school to book on.

There are also 10 paid places available.

CREATE THE TIGER CHRISTMAS HOLIDAY CLUB CLIMB 4
Ages 5-11
Grimsby Institute
Monday 19th December - Thursday 22nd December
10:00 am - 2:00 pm

10 paid places available
£6 - Lunch not included
£10 - Lunch included

20 FREE places available for
• FSM due to low income
• Looked after children
• SEND or Social Care
Lunch will be provided

If you received FSM will need a HAF code from school to book on
To book your place visit www.bookwhen.com/climb4 or contact us on:
Mobile: 07548 825026
Telephone: 01472 236688 Ext 15331

Department for Education
NORTH EAST LINCOLNSHIRE COUNCIL
www.nelincs.gov.uk

Find more HAF activities on the HAF website. [Holiday Activities and Food - NELC | NELC \(nelincs.gov.uk\)](#)



SEND

Parent carer newsletter



This is the SEND Newsletter for 28 November to 4 December 2022

New equipment improves experience for local parents at Diana Princess of Wales Hospital

The Grimsby Hospital has new equipment. They now offer a scale for wheelchair users.

A local dad of an 11 year old who has complex needs is celebrating this new addition to the hospital.

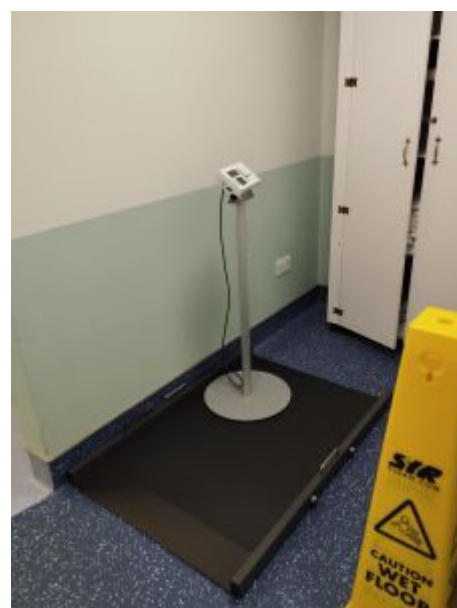
He said: "My daughter is 11 and she is blind, unable to walk or talk, is epileptic sleep apnoea and is doubly incontinent. She also has profound learning difficulties.

"It's important equipment because for the full 11 years of our daughter's journey and hundreds of visits by her and many others to see consultants, she can be accurately weighed in safety and comfort.

"This is important because without an accurate weight the appropriate amount of medication cannot be given as often dosage is based on weight not just age.

"Parents who have children and young adults in wheelchairs know only too well the barriers they face especially when it comes to personal care and changing.

"This is a great addition to the hospital."



Autism and Positions of Power Research

Amber is an autistic peer mentor at the [Faraway](#), and research student at Neurospace (part of the Adult Autism Service).

She said: "I'm running a study on autistic people's views about people like parents, teachers and doctors and their choosing whether or not to inform an autistic person (adult or child) about being autistic.

"Academia/medicine/science regularly forgets to include autistic people's opinions and wishes when researching stuff about autism and, I don't know about you, but I think this needs to change. Our voices matter.



SEND

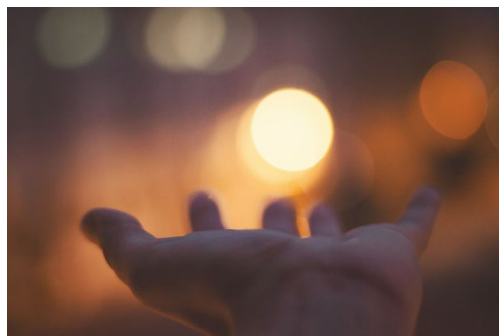
Parent carer newsletter



This is the SEND Newsletter for 28 November to 4 December 2022

"If you'd like to be involved to share your views and feelings, I'm doing short interviews either in person (at Neurospace, Queen Street) or online via Teams (I'll sort all that out). It's five to eight questions and take between 15-60 minutes, depending on how long your answers are!

"Alternatively, if you'd like to email me your thoughts, that's good too, I can include those in my research – details, feelings, examples, attitudes, stories and impacts (potential and actual) are all useful."



Find a warm welcome space

[Find a Warm Welcome Space Today](#)

There are over 3000 registered organisations that have opened or are opening up free, warm, welcoming spaces for the public over this winter across the UK.

Warm Welcome Spaces come in all different shapes and sizes, from a homework club in a local church on a Tuesday, to over an over 65s community centre drop-in on a Wednesday and library co-working desk open all weekend. People just need to enter their postcode and their requirements to find the right space for them.



SENDIASS

SENDIASS provide support for SEND, across education, health and social care.

[Sendiass North East Lincolnshire | Facebook- external site](#)



Contact SENDIASS:
Call- 01472 326363
Email- ask@nelsendiass.org.uk

[- external siteSENDIASS- external site](#)



SEND

Parent carer newsletter



This is the SEND Newsletter for 28 November to 4 December 2022

If you have questions about SEND we are always here to help. Please don't hesitate to email sen@nelincs.gov.uk. We always try to make sure that children and parents/ carers voices are heard.

These Weekly SEND parent/carer newsletters are shared with teams within education, health and social care as well as parents/carers SENCOs, the DfE and local charities.

If parents/carers or young people over 16 do not have access to the internet or if they prefer to receive paper copies only please contact sen@nelincs.gov.uk.