



Through Christ we believe, inspire, achieve.

Welcome to Year 4

September 2025

Who are we?



Teaching Staff

- Miss May (4A)
- Mrs O'Connell (4B)
- Mrs Whittle (Teaching Assistant)
- Mrs Thornber (Teaching Assistant)

General Information



- ❑ P.E will take place on Wednesdays and Yoga will take place on Mondays. Every child will come into school in their P.E kit and pumps/trainers. Please label any items of clothing.
- ❑ No directed homework however we would like children to read 5x week and access TTRockstars 3x week. Spring term reading.
- ❑ Pupils can bring a water bottle and a piece of fruit/vegetable each day.
- ❑ Book bags should be brought in daily containing home reading book and reading record. They will be checked each Friday by a Teacher.
- ❑ To ensure all children go home safely at the end of the day, please be patient and wait for your child to reach the front of the line.

Trips



We are very aware of the current cost of living crisis and we appreciate that everybody's circumstances are different.

Autumn - Ancient Greece fun day

Spring - Library visit & Philharmonic Hall

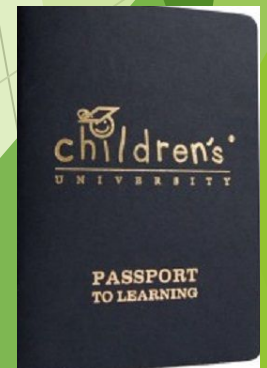
Summer - Romans Chester Trip

Children's University



Children's University is a charity that works in partnership with schools to develop a love of learning in children. This is achieved by encouraging and celebrating participation in extra-curricular activities in and outside of school.

- Passports available from the office - £3
- One credit is awarded for one hour of activity (from clubs that are validated by CU) - with a maximum of ten credits per term per activity.
- Credits from clubs in school are recorded by school (not in passport)
- Half termly activities are sent out to parents- photos showing evidence of completion of tasks sent to CU and credits are awarded.
- Graduation takes place in Year 2 and Year 6- Graduation Ceremony at Edge Hill.
- Credits can be achieved from residentials, Summer Reading Challenges and visiting particular museums.



Mathematics

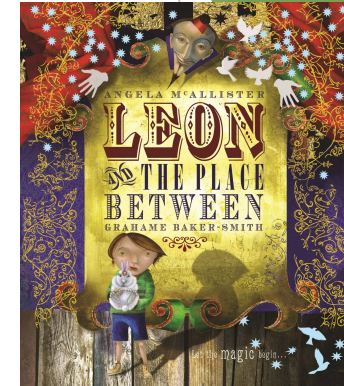
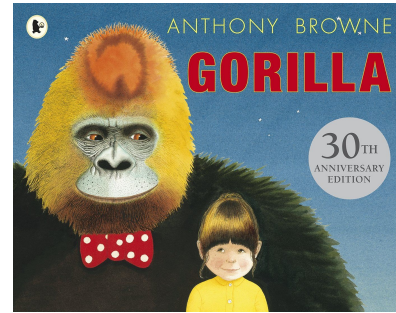
	Week 1	Week 2	Week 3	Week 4	Week 5	Week 6	Week 7	Week 8	Week 9	Week 10	Week 11	Week 12
Autumn	Number Place value				Number Addition and subtraction			Measurement Area	Number Multiplication and division A			Consolidation
Spring	Number Multiplication and division B			Measurement Length and perimeter		Number Fractions				Number Decimals A		
Summer	Number Decimals B		Measurement Money		Measurement Time		Consolidation	Geometry Shape		Statistics	Geometry Position and direction	

Pathways to Write



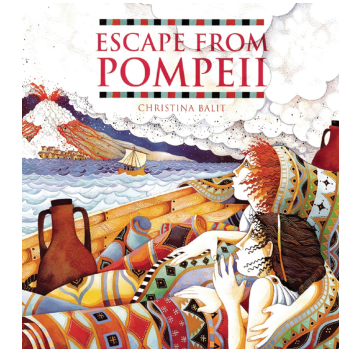
Term 1:

Gorilla/Leon and the Place Between



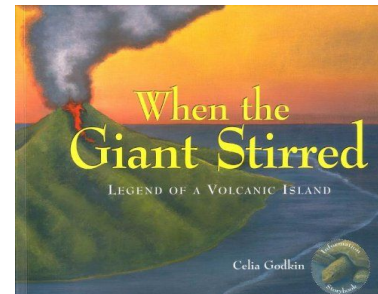
Term 2:

Escape from Pompeii/ When the Giant Stirred



Term 3:

100 Facts Rainforests/ Blue John



Spelling/ Handwriting

Science



Animals including humans



Electricity



Living things and their habitats



Living things and their habitats - Conservation



Sound



States of matter



Science study

Animals, including humans

Year ____ Term ____

Parts of the **digestive system**

Digestion means 'to **carry apart**'
from the Latin *dis (apart)*
+ *gerere (to carry)*

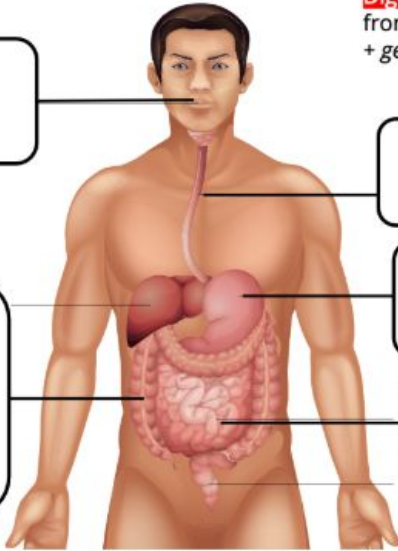
mouth – food is
chewed by the
teeth and mixed
with saliva

oesophagus – the tube that
carries food (**bolus**) from the
mouth to the stomach

stomach – The organ that
starts to digest food using
acids and enzymes - turns
food into a liquidy mixture

small intestine – absorbs
products from digestion
into the bloodstream

large intestine –
anything left from the
small intestine is
collected, compacted
and water absorbed.
This is where waste
passes on its way out of
the body.



mouth – chew - saliva



enzymes (chemicals) in our saliva help break
down foods, like starch and fat



oesophagus – relax - contract



food is pushed down when the walls of the
oesophagus contract and relax



stomach – holds / turns food –
breaks down with acids



strong acids break down the food then
muscles turn the food over to expose it
to the **gastric juices** – acids & enzymes



small intestine – absorbs
digestible food



partly digested food is pushed into the
small intestine – **enzymes** break down food
and it is **absorbed** into the bloodstream



large intestine – is absorbed
water & vitamins



- food that is hard to digest is passed into
the large intestine
- water and **vitamins** absorbed back into the
body



defecation – waste passed out



food not digested is passed out as **faeces**

Knowledge Organisers

Religious Education and RSE



RED Curriculum

Interpreting scripture in creative ways.

Autumn Term - The story of Sarah and Abraham

-Use of golden box and godly play.

PSHE

Each class will part take in daily prayer and liturgy sessions.

Ten:Ten
Resources

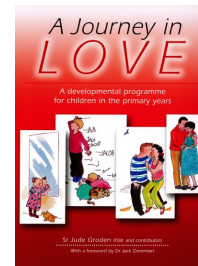
RSHE

Throughout the school children follow a RSE Education Program 'A Journey in Love.' It is approved by the Archdiocese and Bishops.

This looks at the five elements of development:

- ♦Physical
- ♦Social
- ♦Emotional
- ♦Intellectual
- ♦Spiritual

It is taught throughout the year.



SOCIAL

How do I learn to accept and celebrate who I am?



*Something
I can do?*

*The kind of
person I am?*

*What do I like about me?
The way I look?*

12 A Journey in Love

"Year 4"



How do I accept difference in others?



*We all have different gifts
and talents.*

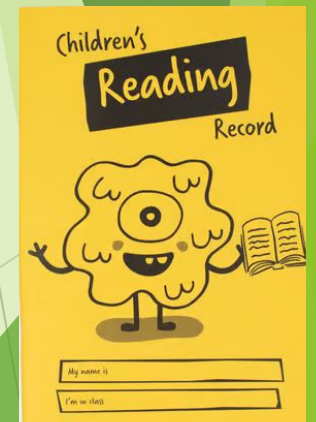
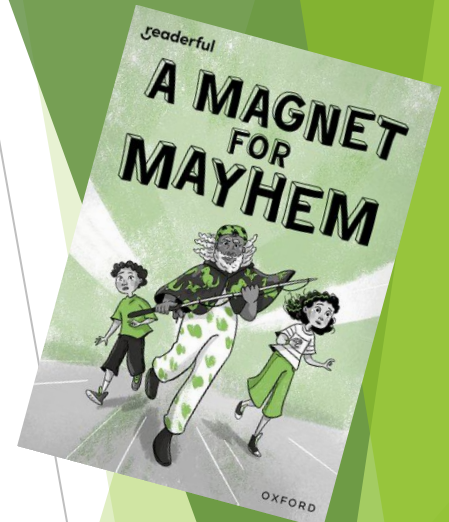
14 A Journey in Love

"Year 4"



Reading

- Children read everyday in school during their morning reading session, independently at their desk and during English lessons.
- All children have a reading record and reading should be logged by an adult each time they read.
- Oxford Owl Log in attached to the inside cover - RWI book and quiz set each Friday plus access to other online books.
 - Children still on the Read Write Inc (RWI) Phonics programme:
 - One RWI book chosen by the teacher and changed on a Friday
 - One Reading for Pleasure book chosen by the child from the class.
 - Children no longer on the RWI Phonics programme:
 - One Reading for Pleasure book.
- Children should be reading at least 5 times a week at home to build stamina and fluency when reading.
- Year 4 MUST have a school reading book bag.



Reading



HERE'S THE IMPACT OF **READING 20** MINUTES PER DAY!

A student who reads

20:00

minutes per day

will be exposed to
1.8 MILLION
words per year
and is more likely
to score in the
90th PERCENTILE
on standardized tests

A student who reads

5:00

minutes per day

will be exposed to
282,000
words per year
and is more likely
to score in the
50th PERCENTILE
on standardized tests

A student who reads

1:00

minute per day

will be exposed to
8,000
words per year
and is more likely
to score in the
10th PERCENTILE
on standardized tests

Source: Nagy, Anderson and Herman, 1987

 **SCHOLASTIC**

Year 4 -Multiplication Tables Check

- ▶ The purpose of the Multiplication Tables Check is to determine whether pupils can recall their times tables fluently, which is essential for future success in mathematics.
- ▶ The test will consist of more questions from the 6, 7, 8, 9 and 12 times tables, as these are trickier times tables focused on more in Years 3 and 4. (The 2s, 5s and 10s are more of a focus in Years 1 and 2.)



Home Learning



- ☐ Google Classroom
- ☐ TTRockstars
- Numbots
- ☐ BBC Bitesize
- ☐ Oxford Owl
- ☐ Whiterose App: One minutes maths
- ☐ Maths Frame (Times tables)
- Scratch

The logo of English Martyrs Catholic Primary School is a circular emblem. It features a central red cross superimposed on a green laurel wreath. Above the cross is a yellow crown. The words "ENGLISH MARTYRS" are written in a grey arc at the top, and "CATHOLIC PRIMARY SCHOOL" is written in a grey arc at the bottom.

Any Questions?