



# Euxton Primrose Hill

# WEDNESDAY WEEKLY

22nd May 2024



[www.primrosehillschool.org.uk](http://www.primrosehillschool.org.uk)

X - @EuxtonPH

*"Together We Will Make A Difference."*

## HEADTEACHER MESSAGE:

As we reach the end of this first half-term together, I wanted to express my sincere gratitude for the warm welcome I have received from the children, team, and families. It has been wonderful getting to know everyone.

One of the many highlights of each week is teaching Cedar class on a Tuesday afternoon. It has given me a lovely opportunity to experience the school environment and get to know the children better – they really are a joy and pleasure to teach. I'm looking forward to meeting with the school council and Miss Pearson after school tomorrow. We will be discussing and sharing ideas for the new academic year, including assemblies and how we can further engage our community.

Thank you to all parents who came into school on Monday for Year 6's annual careers day, our pupils loved learning about many new jobs and skills sets and have been inspired by your talks – thank you. Pendle and Rivington had a wonderful trip each to Southport this week visiting the Southport Eco Centre where they learnt about renewable energy and climate change. EYFS had a super time with the farm visiting yesterday, they were very excited telling us which animals they had seen.

I would like to take this opportunity to thank you all for a fantastic first half-term and your continued support. I wish you all a very relaxing half-term break and do hope that the sun shines to make it a wonderful week. A reminder that we have one INSET day, and so school will reopen to all pupils on Tuesday 4th June 2024.

**Mrs Claire Jones**

**Headteacher**

## PTFA SUMMER FAIR - THURSDAY 27TH JUNE

We are pleased to announce that the PTFA Summer Fair this year will take place on Thursday 27th June between 6.30pm to 8.30pm. Tickets cost £1.00 each and will be available on ParentPay from Friday 25th May 2024.

We are looking forward to welcoming the whole school community to come together and enjoy this occasion, so please do try and keep this date free. There will be lots of activities, raffle prizes and refreshments on the day to enjoy. Already confirmed are donkeys, a bouncy castle, Slushie machine and Wallings Ice Cream. We look forward to booking more stalls over the next few weeks.

Finally, these events could not go ahead without the help from parents/carers or teachers so if you can spare half an hour on the night then please can you complete the form on parent mail confirming the time you will be available to help by Friday 21st June 3pm.

If you have any further queries, please do not hesitate to contact at [PTFAAdmin@primrosehill-euxton.lancs.sch.uk](mailto:PTFAAdmin@primrosehill-euxton.lancs.sch.uk)



## BEST FOOT FORWARD - 10K & 1K FUN RUN

We are excited to announce that Leyland Trucks are using Georgiana's Charity - Best foot forward for Georgie/Just for Children - as their fundraising for their annual 10k and 1k fun run through Cuerden Park this year!

Please use the link to find more information and if you would like to take part:

<https://www.facebook.com/share/p/mQVvZxUeId6SbgC8/?mibextid=WC7FNe>

Its £15 entry for adults and £5 for children (1K fun run) with 60% of all ticket sales goes directly into the charity on Sunday 7th July.

Georgiana and her family will be there cheering everyone on!



Tel: 01772 276688

Email: [office@primrosehill-euxton.lancs.sch.uk](mailto:office@primrosehill-euxton.lancs.sch.uk)

Out of school Club, please contact Sarah Collison 07548 944202 or [s.collison@primrosehill-euxton.lancs.sch.uk](mailto:s.collison@primrosehill-euxton.lancs.sch.uk)



# Dropping off and Parking Around School

We are working with the Road Safety Officer's and parking enforcement from Lancashire County Council to seek further advice on parking outside school. We receive many emails, phone calls and photos from concerned residents and parents each week showing parents and carers parking inconsiderately and dangerously on zig zag lines, keep clear lines and double yellow lines

Please note that it is not acceptable to park in an area that is deliberately marked as a no parking zone. For the safety of the whole school community, PLEASE, PLEASE, PLEASE think about the safety of others before parking.



Keep entrance clear of stationary vehicles, even if picking up or setting down children.



# Pupil Achievements and Celebrations

## Super Pupils

**YEAR 6**  
K2 - Full Class  
Everest - Full Class

**EYFS**  
Evie M  
Cash L

**YEAR 5**  
Mont Blanc - Leah H  
Olympus - Cullen M

**YEAR 1**  
Ash - Macie T  
Cedar - Amelia L

**YEAR 4**  
Ben Nevis - Penelope O  
Snowdon - Miles T

**YEAR 2**  
Elm - Ralph D  
Maple - Olive D

**YEAR 3**  
Pendle - Reuben T  
Rivington - Isla T

### House Point Winners

KS1  
Yellow

KS2  
Red

### Birthday Books

Thank you to the following pupils for donating their favourite books to celebrate their birthday this term:

Toby in Cedar - The Book With No Pictures  
Hayden in Elm - Keith - The Cat With The Magic Hat

### Other Information

#### Enterprise Stalls - Cakes, Bakes and Toys

Each Wednesday after school finishes, for the next 10 school weeks, Year 6 pupils will be running different stalls on the upper playground as part of their Enterprise unit in PSHE. This week the children are selling **Sweet bags** and they will be selling their goods until 3:45pm.

The stalls and dates for each Wednesday are as follows:

05.06.24- Toy Stall  
12.06.24- Cakes and Bakes  
19.06.24- Tuck Shop  
26.06.24- Ice lollies  
04.07.24- Sweet bags (Held on the Thursday due to potential Transition Days)

### Children's University

Thank you to everyone that has sent in their evidence over the past few weeks. Well done to everybody! Credits have now been issued accordingly and all passports will be returned this week.

Attached are the May Spring Challenges to complete over the holidays and look forward to receiving your evidence. Remember you can send your evidence to Mrs. Swires either by email, showbie account or by dropping off in the letter box outside the school office.



## Reminders And To Do

DON'T miss it!



We are a nut free school. Please do not bring any snacks into school which contain nuts, including any Nutella products.



Y5 - Complete ParentMail form and pay deposit for Boreatton Park 2025 - Current Y5's



Y5 - Please complete the ParentMail Form for photo consent for Hothersall Lodge.



Y1 - Payment due 24/05/2024 for Bring Yer Wellies Trip.



Y1 - Payment due 24/05/2024 for the Lowry Artist Visit in school.



Y6 - Payment due 24/05/2024 for Leyland Trucks visit.



Just a reminder school have a mini store of food cupboard essentials available and we can make a referral for families that may require extra help with this issue or any other. Please contact the office for details or alternatively email [e.paris-unsworth@primrosehill-euxton.lancs.sch.uk](mailto:e.paris-unsworth@primrosehill-euxton.lancs.sch.uk) or [j.jotejko@primrosehill-euxton.lancs.sch.uk](mailto:j.jotejko@primrosehill-euxton.lancs.sch.uk).

# Dates for the Diary 2024



## May

**20th - 24th** Walk to School Week  
**22nd** Y3 Rivington Southport Visit  
 Y6 Boreatton Park Residential Meeting 4pm

**27th May - 3rd June (Inclusive) HALF TERM**

## June

**4th SCHOOL RE-OPENS**

**10th - 12th** Y5 Hothersall Lodge Residential  
**11th** Y1 Lowry Artist in school  
**13th** Y1 Ash Bring Yer Wellies Trip  
**14th** Y1 Cedar Bring Yer Wellies Trip  
 Y6 Leyland Trucks visit  
**18th** EYFS Creepy Crawley Roadshow (in school)  
**21st - 24th** Y6 Boreatton Park Residential  
**24th - 28th** Health and Fitness week\*\*  
**26th** Y2 Helmsore Mill Trip  
**27th** PTFA Summer Fair\*  
**28th** Sports Day

## July

**1st** Children's University Graduation  
**4th** Ben Nevis Sleep Over  
**5th** Ben Nevis Tea Dance  
**8th** Bike Ability - Y5 Mont Blanc  
**9th** Bike Ability - Y5 Mont Blanc  
**10th** Y6 Leavers Performance 6.30pm  
**11th** Snowdon Sleep Over  
**11th** Bike Ability - Y5 Olympus  
**12th** Snowdon Tea Dance  
**12th** Bike Ability - Y5 Olympus  
**15th** Summer Term Reading Target 30 reads  
**18th** Y6 Leavers Assembly 2pm

**19th END OF SCHOOL TERM**

### School Library Opening Times

Monday	EYFS to Year 6	After school until 3.30pm
Tuesday	EYFS to Year 6	
Wednesday	Story Time Club Pupils only	
Thursday	Out of School Club Pupils only	
Friday	EYFS to Year 6	After school until 3.30pm

### Events in the local area:

<https://its-mental-wellbeing-events.eventcube.io/events/58877/family-wellbeing-festival-2024/>



### Primrose Hill Clubs 2023 – 2024

Summer – W/C 06.05.24 - W/C 17.06.24

Name of Club	Run by	Day	Finish	Collect From
Spanish Club Y5/6	Miss Brown	Monday	4pm	Office
Eco Club	Mrs Swires / Miss McKinley	Tuesday <del>11.00/12.4</del> 16.07/24	4.10pm	Office
Art Club Y4,5,6	Mrs Bullock	Tuesday	4pm	Snowdon
StoryArt Y1&2	Miss Kanski	Tuesday	4pm	Pendle
Yoga (EYFS – Taster Session)	Mrs Higson / Miss Blackwell	Wednesday	3.45pm	EYFS
Wellbeing / Mindfulness (KS1)	Mrs Swires	Wednesday	3.45pm	Office
Storytime Y1&2	Mrs Hannant	Wednesday	3.30pm	Library
Computing Y3/4	Miss Dobbs	Wednesday	4.10pm	Pendle
Computing Y1/2	Mrs Devine	Wednesday	3.45pm	Office
Science Club (KS1)	Mrs Swires	Thursday	3.45pm	Office
Music Y1&2	Mrs. Jotjeko / Mrs Hacking	Thursday	3.45pm	Office
School Council	Miss Pearson	Thursday	4pm	Elm
Board Game Club Y2	Mrs Smelt	Thursday	3.45pm	Maple

### Sports Clubs Summer Term 2

WC 03/06/24 – WC 15/07/24

Monday	CSSP Athletics Club Y2	4pm	At the end of the sports clubs, please collect from the main school entrance.
Monday	Intro to Striking and Fielding Games KS1	4pm	
Tuesday	Striking and Fielding Games LKS2	4.30pm	
Wednesday	Striking and Fielding Games UKS2	4.30pm	
Thursday	Net / Wall games KS2	4.30pm	
Friday	Sports Council	4.30pm	

\*New date added

\*\*Information or date amended



# School Parking

## Have you considered:

- Walking or cycling to school instead?  
This is a great way to contribute to a child's 60 minutes of activity a day and is easy to incorporate into your daily routine. Try it once a week at first and see how easy it can be.
- Parking nearby or getting off the bus two stops earlier and walking the rest of the way. If you live too far away to walk or need your car for your commute to work you can still walk part of the way. Adults in England should aim to take part in at least 150 minutes of moderate intensity physical activity each week.
- Car sharing is a great way to reduce congestion and save you pennies. Team up with other parents or carers who live nearby- share the cost and halve the hassle.

If you have a parking concern outside of your school report it to [parking@lancashire.gov.uk](mailto:parking@lancashire.gov.uk)

For more information on this leaflet please email the Road Safety Team at [roadsafetyeducation@lancashire.gov.uk](mailto:roadsafetyeducation@lancashire.gov.uk)



**Better  
Health**

**healthier  
families**

Sign up at  
[nhs.uk/betterhealth](https://nhs.uk/betterhealth)



[lancashire.gov.uk](https://lancashire.gov.uk)



# A Guide to Parking Safely at Our Schools

Inconsiderate and dangerous parking around our schools has become a big problem, putting the safety of children and others at risk. We all want to keep our children safe around schools, so here are some top tips on how you can make a difference.

## How can you help?

- ✓ Keep your speed down
- ✓ Turn your engine off - do not idle
- ✓ Leave the middle of the road free, with enough room for other road users to easily pass through
- ✓ Make sure your child leaves and enters your vehicle safely onto the pavement
- ✓ Check for pedestrians and cyclists before opening a car door
- ✓ Leave enough room on pavements for pedestrians, pushchairs & wheelchairs to get past
- ✓ Take care when reversing
- ✓ **DO NOT PARK ON ZIG ZAG LINES**

## Please keep restricted areas clear

- ✓ Zig zags and school entrances
- ✓ Dropped kerbs
- ✓ Resident's driveways
- ✓ Opposite or within 10 metres of a junction- so that children can see cars and cars can see children.

## Your questions answered

### What would happen if I did park in a restricted area?

If you park in a restricted area you are putting children's lives in danger and for this reason school parking is regularly monitored and enforced. If you park in a restricted area you could receive a £70 fine.

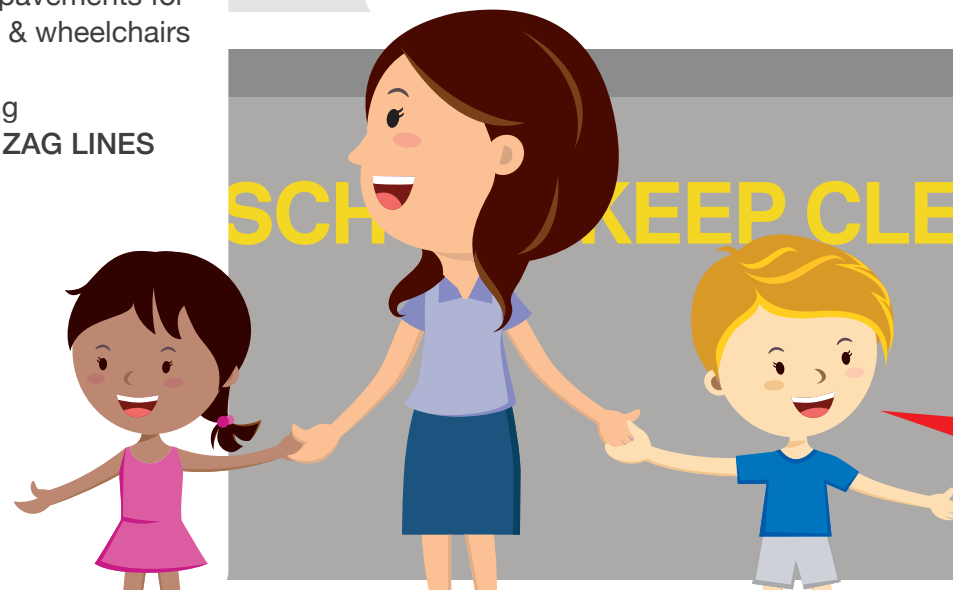
### Am I okay to stop on zig zag markings if I am only there a few minutes?

No, under no circumstances should you stop on zig zag markings at any time, these are there to protect school entrances and leave a clear view of the street for pedestrians.

**Please park considerably around our schools and keep our children safe!**

## Don't forget...

Congestion around schools is one of the main reasons given for dangerous parking and there are other ways you could do the school run...



**Never park on zig zags or block school entrances**

# MAY

## HOLIDAY CAMPS



### WHEN

28TH – 31ST MAY



### WHERE

AT A VENUE NEAR YOU



### WHY?

ENGAGE–INSPIRE–  
MOTIVATE–EMPOWER!

**NEW**

### ACTIVITIES

SPORTS & GAMES

UV LAZER TAG

UV DODGEBALL

INFLATABLES

THEME DAYS

MEDALS & REWARDS

BREAKOUT ACTIVITIES

**AGES 4-12**



HOLIDAY CAMPS

# BOOK ONLINE

[FUNDAactive.com/holidaycamps](https://FUNDAactive.com/holidaycamps)





## EURO 2024 May half term challenges

### Activity 1 Flags!

Find out which teams are taking part in Euro 2024 and pick 5 countries and draw/colour their flags and write a couple of facts about each one next to their flag.

<https://www.uefa.com/euro2024/standings/>

### Activity 2 Food!

There are 24 countries competing in Euro 24. Why not look for a traditional recipe of one of the competitors? You could make Italian pizzas, Belgian Waffles, French Croque Monsieur...it is up to you! There are some ideas here:

<https://insanelygoodrecipes.com/european-recipes/>

### Activity 3 Art!

Many famous artists are from some of the countries competing in the Euros. For example Van Gogh – Netherlands, Picasso – Spain, Monet – France. Choose an artist and re-create one of their famous works of art.

### Activity 4 Maps and Maths!

The Euros are taking place in 10 stadiums across Germany. See if you can draw a map of Germany with all the stadiums plotted and then work out the total seating capacity of all 10 stadiums... This link will help

<https://www.uefa.com/euro2024/news/0273-14ac084902cc-9ef59ec61319-1000--euro-2024-host-cities-venue-guide/>

### Activity 5 Design!

Get your creative hat on and design a new kit for one of the countries taking part in Euro 24 Or design a new mascot to represent your chosen country, the Euro's mascot is a traditional German Teddy Bear called Albi.

<https://uefaeuroinfo.com/euro-2024-mascot/>

What will you choose?

### Activity 6 Active!

Get yourself as fit as a footballer! Create a workout of 10 different moves lasting 1 minute each. Complete it every day over the holidays. Include different activities such as running, jumping, plank, bear crawls, squats etc. See if you can do more reps of each exercise by the end of the week!

### Activity 7 Languages!

Choose 10 of the countries competing (not including England) and see if you can find out how they say the following words in their language:

- Hello
- Goodbye
- Please
- Thank you
- Football



Collect extra Children's University credits during May half term by completing these challenges. Each activity is worth 1 credit unless stated otherwise when you take evidence of your activity to Mrs Swires or you can email me your evidence to [CU@primrosehill-euxton.lancs.sch.uk](mailto:CU@primrosehill-euxton.lancs.sch.uk) Hope you enjoy the challenges and thank you.