

EVERGREEN ACADEMY

NEWSLETTER



SUMMER TERM

2025

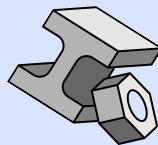
Welcome Back to Evergreen for the second summer term 2025. Below is an outline of the learning that will be undertaken this half term.

Hazel Base: Paws, Claws and Whiskers.



From pets at home to wild animals in the zoo, discover what animals eat, where they sleep, and how to care for them. Learn fun facts about rabbits, snakes, elephants and more—and even create your own food chain! When a group of mysterious pets arrive at the local pet shop, it's up to you to look after them.

Maple Base: Mighty Metals.

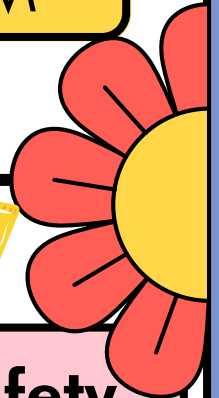
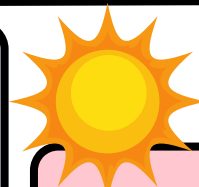


Become a scientist and engineer as you explore forces, magnetism, metals, and materials. Test, build, and experiment—can you shine a penny, create music from metal, or design a strong companion for the Iron Man? Discover what makes metals unique and ask yourself: if you were a material, what would you be?

Oak Base: Hola Mexico!



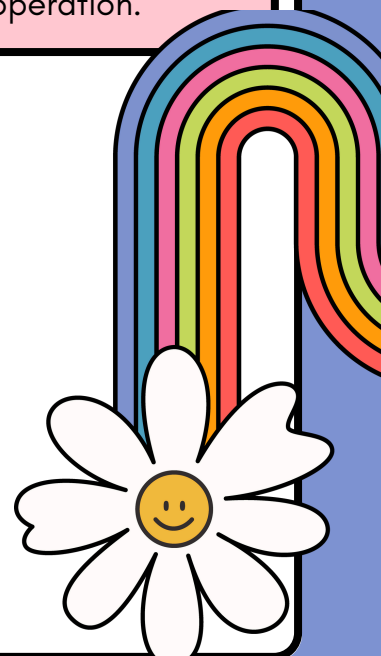
Welcome to Mexico! Explore its vibrant culture, ancient temples, and mouth-watering cuisine—just go easy on the spices! Discover the world of the Maya, create music, celebrate festivals, and see if you have what it takes to be chief.

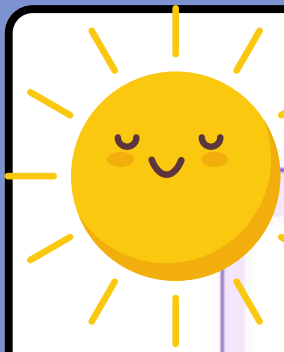


Sun Safety

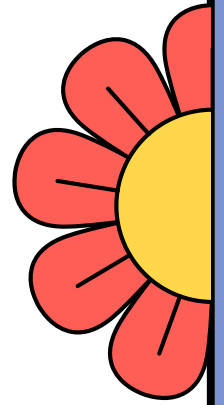
As the weather warms up and children spend more time outdoors, we kindly ask parents and carers to apply suitable sunscreen to their child each morning, especially on sunny days. Please note that staff will not be applying sunscreen during the day, so we appreciate your help in ensuring your child is protected before arriving.

Thank you for your cooperation.





ATTENDANCE



Good attendance means being in school at least 95% of the time

Good attendance -
Best chance of
success

100% attendance
0 days absence
190 days in school

95% attendance
10 days absence
180 days in school

90% attendance
19 days absence
171 days in school

Attendance requires
improvement - less
chance of success

85% attendance
29 days absence
161 days in school

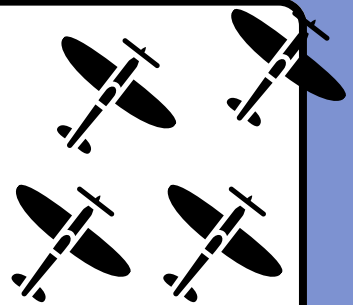
80% attendance
38 days absence
152 days in school

Attendance concern -
serious impact on
education

75% attendance
48 days absence
143 days in school



VICTORY



VE DAY 80TH CELEBRATIONS 2025

Thursday 8th May 2025

