



Fairholme Primary School

'We believe we can achieve'

Issue 1 September 6th 2024

A message from Mrs Harris our Headteacher:

A very warm welcome to the new academic year at Fairholme Primary School. We are really looking forward the school year ahead. I hope you had an enjoyable and restful Summer Holidays. For families who are new to our school, we are very pleased that you are joining our community and looking forward to working in partnership with you.

As we start the Autumn Term, Year 6 are diving back in time to Blitzed Britain, Year 4 are becoming Doctors in their topic Doctor, Doctor, Year 3 are cooking up a storm with Ready, Steady, Cook! Whilst Year 2 are investigating London's Burning, Year 1 are on Weather Watch and Year 5 are becoming Raiders and Traders. It is all go already, we are excited to get started.

Times of the school day

The school gates will open at 8.40am and the children must be in school for 8.45am. **The school day starts at 8.45am.**

In Key Stage 2 please continue to use both gates, one for Years 3 /4 and one for Years 5/6, this helps to ensure everyone can enter calmly.

The school day finishes at 3.15pm. If you have siblings in different key stages we would suggest that you pick up KS2 children first and then KS1 children afterwards.



Come and join us at our Family Picnic

We can't wait to see you all this **Friday 13th September 3:15pm – 4:15pm** on the KS2 field for our welcome back family picnic.

Bring along a **picnic** and a blanket and soak up the last of the Summer sunshine while **reconnecting with us** after the Summer break.

If you'd rather not worry about bringing your own picnic, we've arranged for an independent food van to come along which will be serving fish and chips and other tasty treats; there will also be an ice cream van to tickle your taste buds with.



Prices for refreshments will range from £2 - £8.



All children must be accompanied by an adult as the school gates will be open.



Free face painting!





Autumn Dates

Meet the Teacher meetings:

Yrs 5/6: 9th September
Yrs 1/2: 10th September
Yrs 3/4: 11th September

Welcome Back Picnic – 13th September
Yrs 1 to 6 Razzle Dazzle Disco – 17th October
Year 6 Residential – 2nd October
Curriculum Showcase – 25th October
Half Term week – 28th October to 1st November

Inset Day – 4th November
Chn return to school – 5th November
Anti-Bullying week – 11th November
Parent's Evening – 27th/28th November
Christmas Fair - 6th December
Christmas Jumper Day – 12th December

Christmas Performances:

Nursery and Reception: 11th December
Year 1 and 2: 13th December
Years 5 and 6: 16th December
Years 3 and 4: 17th December

Friday 20th - End of Term at 12.30

Behaviour and Values - We have high expectations for how children behave and have a Behaviour and Relationships Policy, that you will find on our website. We are proud of how well our children behave and their approach to learning.

We really focus on positive behaviour, praise and reinforcing the behaviours we want to see. Our 6 school values underpin all that we do in school and we work hard on these with the children to make them part our school community and way of life.

Respect, Honestly, Kindness, Self-Belief,
Responsibility, Aspiration

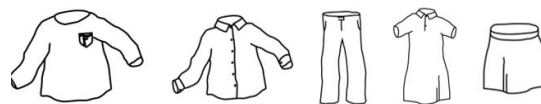
Thought for the week

A new school year means new beginnings,
new adventures.

Uniform - School uniform is very important and we want the children to take pride in how they look at school.

Children are expected to wear full uniform every day. It has been fantastic to see the children all looking so smart and embracing the school uniform.

If a child comes in to school with an incorrect item of uniform we will send a reminder letter home about what they need to be wearing. We will also try to find them the correct item to wear in school for that day.



Attendance - We work hard on attendance here at Fairholme and appreciate families working with us. The national expectation for pupil attendance is 96% or above.

Time out from school due to either lateness or non-attendance has a significant impact on a child's development and that of other children, when teachers try to catch-up lost learning time.

If your child is unwell and not able to attend school, please do notify the office. Please remember that day trips, extended weekends or holidays need to be arranged outside term time; these cannot be authorised.

If children are attending our Rainbow Nursery, the same expectations apply regarding good attendance for our Nursery children.

Question of the week

Would you rather live on land or at sea?