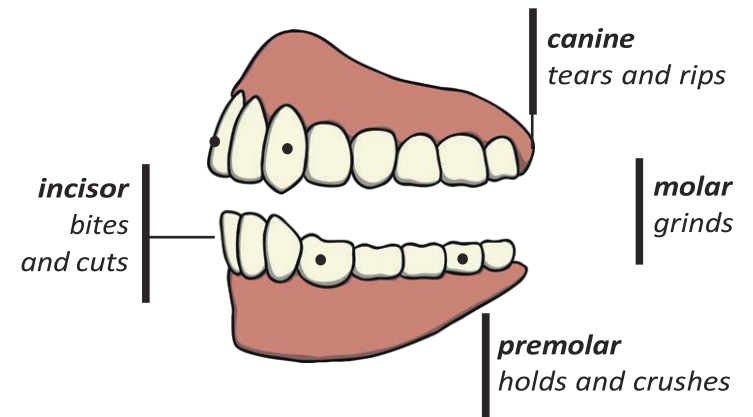


Doctor, Doctor?

What should I know by the end of this topic?

- The names of the main parts of the digestive system and where they are
- The function of the digestive system and how it works
- The names of the different types of teeth in humans and what they do
- The differences between an omnivore, herbivore, and a carnivore's teeth
- What tooth decay is and how we can prevent it

Human Teeth and Their Functions



Key Vocabulary

herbivore	An animal that eats plants.
carnivore	An animal that feeds on other animals.
omnivore	An animal that eats plants and animals.
producer	An organism, such as a plant, that produces its own food.
predator	An animal that hunts and eats other animals.
prey	An animal that gets hunted and eaten by another animal.

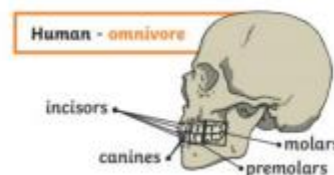
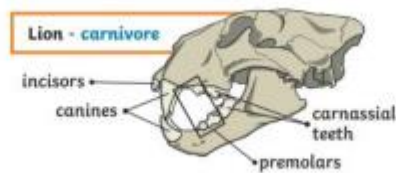
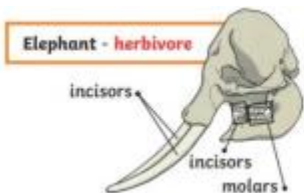


How do we look after our teeth?

To prevent tooth decay, limit sugary food and drink, brush teeth twice daily using a fluoride toothpaste and visit your dentist regularly.

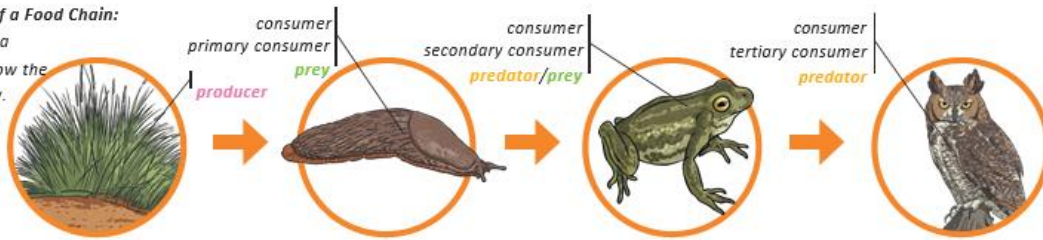
What types of teeth do we have and what are their functions?

We have four main types of teeth: The molar grinds food, the premolar holds and crushes food, the incisor bites and cuts and the canine tears and rips.



Doctor, Doctor?

An Example of a Food Chain:
the arrows in a food chain show the flow of energy.

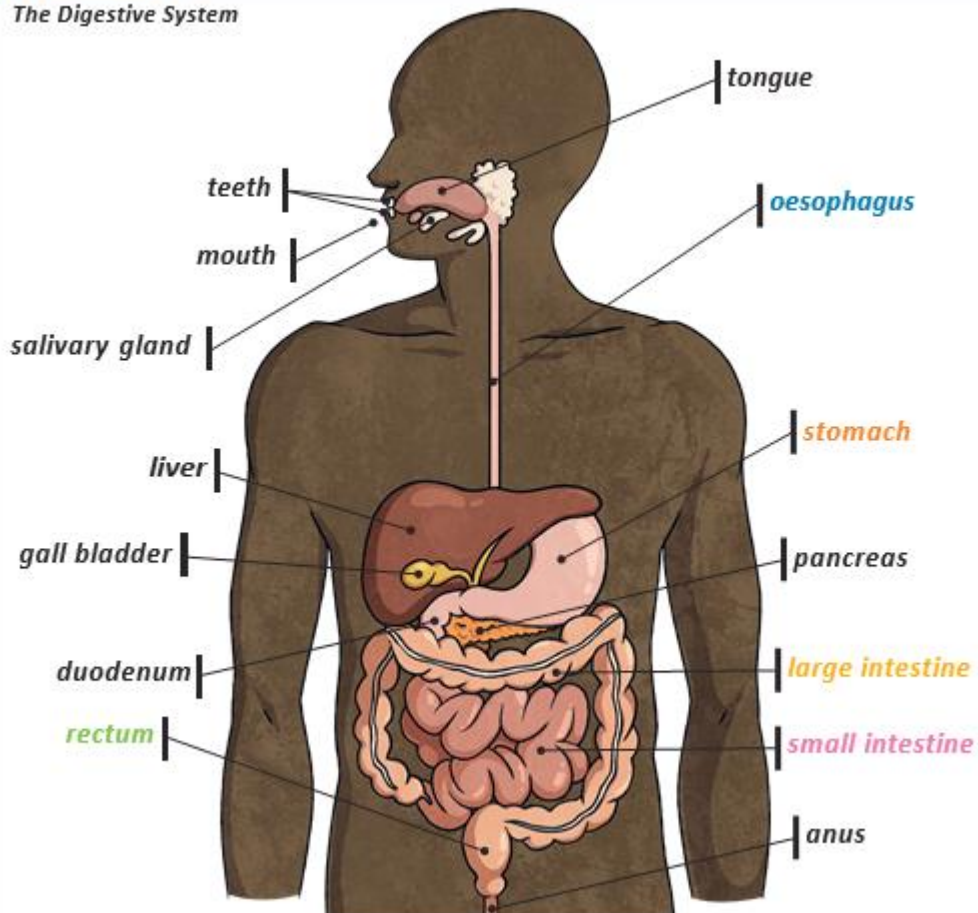


What are food chains?

A food chain is a series of organisms each dependent on the next as a source of food. A food chain shows how each living thing gets food, and how nutrients and energy are passed from creature to creature.

Key Knowledge

The Digestive System



Key Vocabulary

digest	Break down food so it can be used by the body.
oesophagus	A muscular tube which moves food from the mouth to the stomach.
stomach	An organ in the digestive system where food is broken down with stomach acid and by being churned around.
small intestine	Part of the intestine where nutrients are absorbed into the body.
large intestine	Part of the intestine where water is absorbed from remaining waste food. Faeces are formed in the large intestine.
rectum	Part of the digestive system where faeces are stored before leaving the body through the anus.

What role does the digestive system play?

1. Food enters the digestive system through the mouth and is broken down by chewing.
2. After being swallowed, the food passes down the oesophagus and into the stomach. The stomach produces acid to kill microorganisms. Enzymes breakdown the food.
3. After it leaves the stomach, the partially digested food enters the intestines. Digested food is absorbed in the small intestine and passes to the bloodstream.
4. Waste material enters the large intestine ready to be excreted