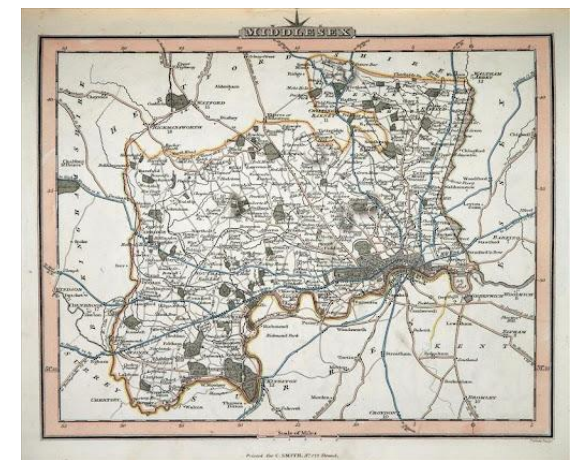


On the Street where you live..... - Year 4 - Spring 2

Key Vocabulary	
locality	A neighbourhood or area.
significant	Something or someone very important.
community	A group of people who live in the same area or who have something in common.
district	An area of country, city or town.
parish	A small place with its own church.
county	An area of a country which usually includes several towns and countryside.
region	A large area of land which has a noticeable characteristic.

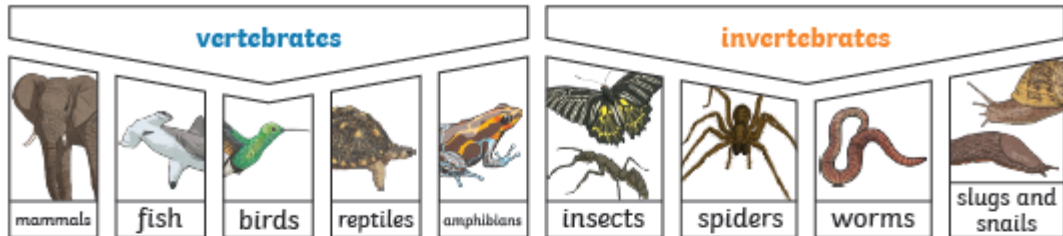


Early History of Bedfont

Bedfont was once a rural village, full of market gardens and orchards, a place where Londoners would drive out to for a day in the countryside. In fact, during the 1700-1800s, the route from London to the South of England, which ran directly through Bedfont, was so popular with wealthy travellers, that soon, this became a favourite haunt of Highwaymen. As time has passed and with the passing of 2 World wars, Bedfont has grown significantly and it remains a popular place to live which is within touching distance of central London.

On the Street where you live.... - Year 4 - Spring 2

Animals can be grouped in lots of different ways based upon their **characteristics**.

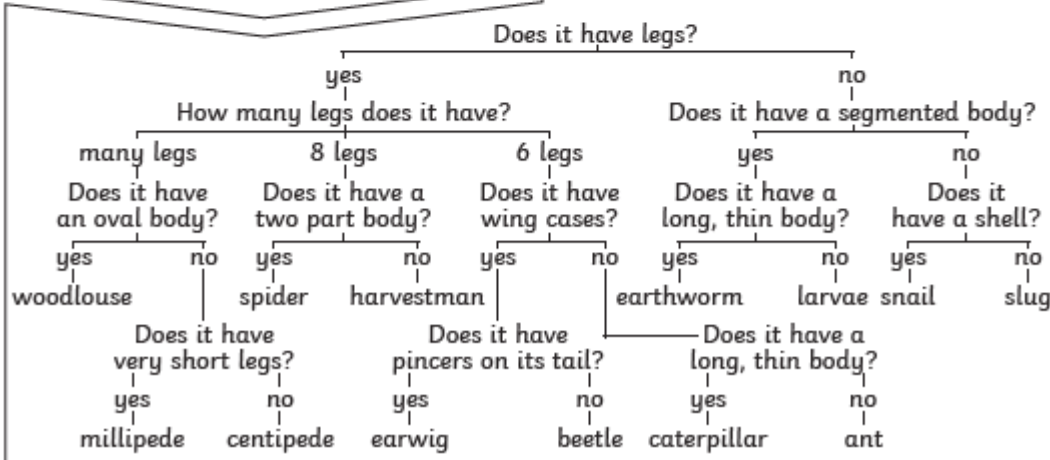


Vertebrates can be separated into five broad groups.

You can use **classification** keys to help group, identify and name a variety of living things. Here is an example of a **classification** key:

You could sort **invertebrates** you might see around school in different ways, such as in this example. The vast majority of living things on the planet are **invertebrates**.

Invertebrate Classification Key



Plants can be sorted into many different groups. For example:



Knowledge, Artists and Significant works

- His full name is Laurence Stephen Lowry.
- He was born in Stretford, Manchester, on 1 November 1887.
- He had an unhappy childhood by his own account and wasn't appreciated by his mother who wanted a baby girl.

He became well known for his matchstick men and the landscapes in the area where he lived. He painted ordinary things - people going to work or to the football, a busy market and the factories in his area.



Coming from the mill.



City collage



Vocabulary	
charcoal	A black crumbly drawing material
colour mixing	Mixing colours together to create new colours
figure	A person
industry	A group of business/buildings
Lowry colours	White, black, yellow, blue and red
Primary colours	Red, blue and yellow
Perspective	The angle or direction in which a person looks at an object

Skills and techniques

LS Lowry made many works of art. Lots of his works were drawings. He drew many pictures in pencil, charcoal and pen.

He used 5 colours- If you add black it makes a colour darker. If you add white it makes a colour lighter.

