

Art Attack

Find out about artists who have left their mark..... Learn how to make your own mark.

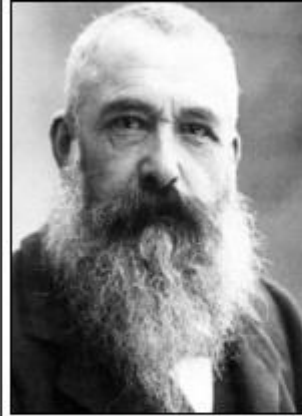
-Claude Monet was a French painter.

-Monet is one of the most famous artists of all time. He is considered a founder of Impressionism, and is well-known for his landscape paintings.

-He is most famous for paintings such as *Impression: Sunrise*, *Water Lilies* and *Haystacks*, and also for developing the Cubism movement.

-The title of the painting *Impression, Sunrise* is thought to have triggered the term 'Impressionism.'

-Monet enjoyed capturing the French countryside, often painting the same scene many times to show changes in light and seasons.



-Monet lived between 1840 and 1926. He was born in Paris, but spent much of his long life in the northern French village of Giverny.

How do I paint like Monet?

Step 2: On your drawing paper, use your watercolour paints to create the lighter background features (e.g. sky).

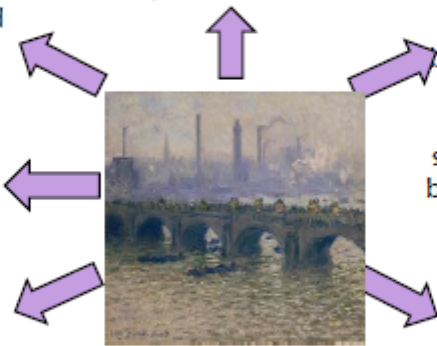
Step 3: Darken your watercolour mix and add the shading, where necessary. Think about how this changes the moment.

Step 4: Use your oil pastels (or crayons) to add in the features in the foreground (e.g. bridges, trees, boats, etc.) Consider how the colour of these subjects is impacted by light/atmosphere.

Step 5: Once your piece is complete, try to paint the same subject in a different moment (using your photos). How can you change the light/atmosphere?

Step 1: Use your digital camera/smartphone to capture the same landscape during different times/weather.

Things you'll need:
Drawing paper, watercolour paints, oil pastel, pencil, smart phone/digital camera.



Can you try to paint a bridge and water in the style of Monet?

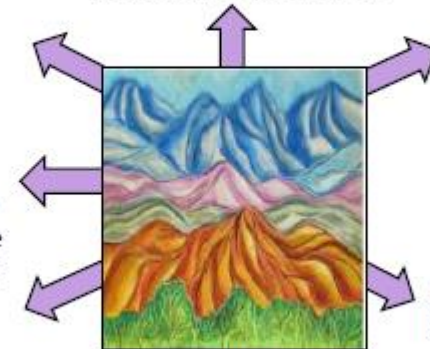
How do I create art like O'Keeffe?

Step 2: Select which colour oil pastels you will use for each 'layer' of the mountains.

Step 3: Draw bold lines down the mountains in jagged lines (this creates the look of the ridges). Press firmly on the paper.

Step 4: Around the ridge lines, colour pressing hard to show shading. In the areas around this, colour with a firmer grip, to show slightly lighter shading around the ridges.

Step 1: Using pencil, draw the outline of the mountains and hills. Some go at the front, whilst some are further behind in the background.



A child's O'Keeffe-style landscape drawing.

Step 5: Now, more lightly colour in the remaining white spaces, to complete your O'Keeffe style landscape!

Things you'll need:
Drawing paper, oil pastels, pencil.

-Georgia O'Keeffe was an American artist. She was a leader of a movement called modernism.

-She painted nature in a way that showed her feelings. She enjoyed painting flowers and desert landscapes.

-She is most famous for paintings such as *Jimson Weed*, *Black Mesa Landscape* and *Cow's Skull: Red, White and Blue*.

-She was the first female painter to gain respect in New York's art world in the 1920s.

-She created simple paintings of landscapes and nature. She used bold lines and bright colours to create different images.



-O'Keeffe lived between 1887 and 1986. She was born in Wisconsin, USA, and spent much of her life in New York and New Mexico, both USA.

Art Attack

Find out about artists who have left their mark..... Learn how to make your own mark.

-Andy Warhol was an American artist, film director and producer.

-Warhol is one of the most famous artists of the 20th Century.

-He was a leading figure in the art movement known as pop art, from the 1950s to the 1960s.

-He is most famous for works such as *Campbell's Soup Cans*, *Marilyn Diptych* and *Eight Elvises*.

-Warhol's works explore advertising and celebrity culture, which emerged in the 1960s in the United States and Europe.

-He used a variety of techniques and styles, including painting, silkscreening and sculpture.



-Warhol lived between 1928 and 1987. He was originally from Pittsburgh, but spent much of his life living in New York City.

How do I produce art like Warhol?

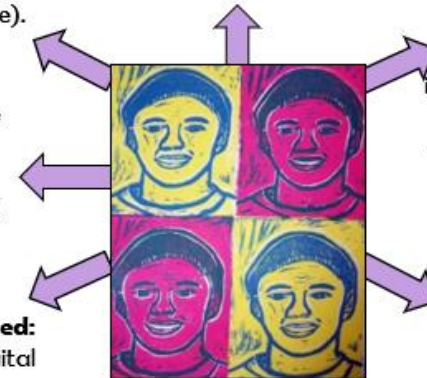
Step 2: Print the image four or six times in greyscale (black and white).

Step 3: Select two colours for each image, that you feel will look bold and bright next to one another.

Step 4: On each selfie use the two colouring pens/pencils to colour in your features/ the background of the image. Use the same scheme (with two different colours) on each image.

Step 1: Take a selfie on a smartphone/ camera. Use the filter options to find a bold and interesting style.

Things you'll need: Smartphone/ digital camera, printer, coloured pens/pencils, paper.



A child's Warhol-style selfie print artwork

Step 5: Stick the selfies next to one another in rows on a large sheet of paper. You now have a Warhol-style print of bold selfie images!

