

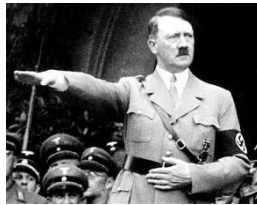
Key Vocabulary	
Allies	The United Kingdom, France and Poland, later joined by other countries, including the USSR (Soviet Union), the United States of America and China.
Axis	The Axis Powers were originally Germany, Japan and Italy. Other countries joined them later.
Nazi party	A German political party with racist and anti-Jewish ideas, led by Adolf Hitler.
atomic bomb	A very high-energy bomb made of radioactive material.
annex	To take another country's land and make it part of your country.
Czechoslovakia	A European country. Now two countries: the Czech Republic and Slovakia.
propaganda	Information designed to promote a political idea or opinion.
active service	Taking part in a military operation as part of the armed forces.

WORLD AT WAR

Year 6 Spring 1 Knowledge Organiser



Sir Winston Churchill



Adolf Hitler

FIRST WORLD WAR
1914-1918

World War II
1939 - 1945

THE EATWELL PLATE

A guide to the right balance of the five main food groups

- Fruit & Veg
- Carbs & Starches
- Dairy
- Protein
- Sugars & Fats

Healthy Lifestyles

Self check: take your own pulse

Find your pulse

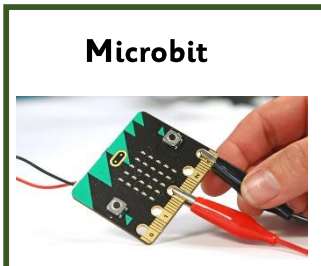
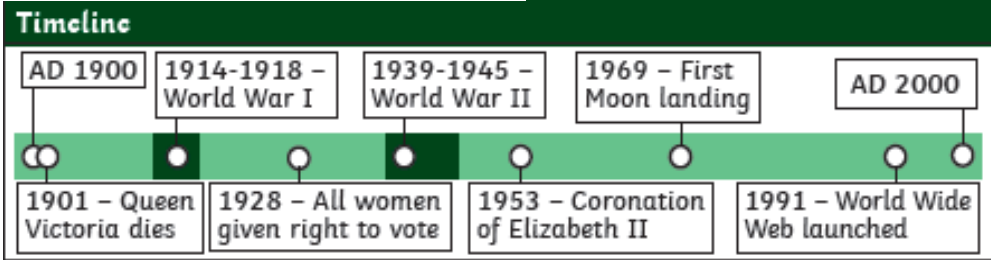
Count your heartbeat for 30 seconds

Double it

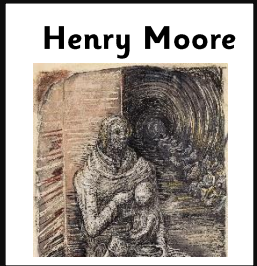
The Island by Armin Greder

When the Sky Falls by Phil Earle

My Secret War Diary by Marcia Williams



RE Key Question:
Is anything ever eternal?



Equivalent Fractions, Decimals and Percentages

$\frac{50}{100} = \frac{1}{2} = 0.5 = 50\%$	$\frac{25}{100} = \frac{1}{4} = 0.25 = 25\%$	$\frac{10}{100} = \frac{1}{10} = 0.1 = 10\%$
$\frac{75}{100} = \frac{3}{4} = 0.75 = 75\%$	$\frac{1}{100} = 0.01 = 1\%$	$\frac{20}{100} = \frac{2}{10} = 0.2 = 20\%$

Classification

```

graph TD
    Q1[Is it warmblooded?] -- yes --> Q2[Does it have feathers?]
    Q1 -- no --> Q3[Does it live on land?]
    Q2 -- yes --> A1[It's a bird]
    Q2 -- no --> Q4[Does it have scales?]
    Q3 -- yes --> Q4
    Q3 -- no --> A2[It's a fish]
    Q4 -- yes --> A3[It's a mammal]
    Q4 -- no --> A4[It's a reptile]
    Q4 -- no --> A5[It's an amphibian]
  
```

Key Vocabulary	
characteristics	Special qualities or appearances that make an individual or group of things different to others.
classify	To sort things into different groups.
taxonomist	A scientist who classifies different living things into categories.
key	A key is a series of questions about the characteristics of living things. A key is used to identify a living thing or decide which group it belongs to by answering 'yes' or 'no' questions.